



The Small Cruise
Ship Collection

www.small-cruise-ships.com

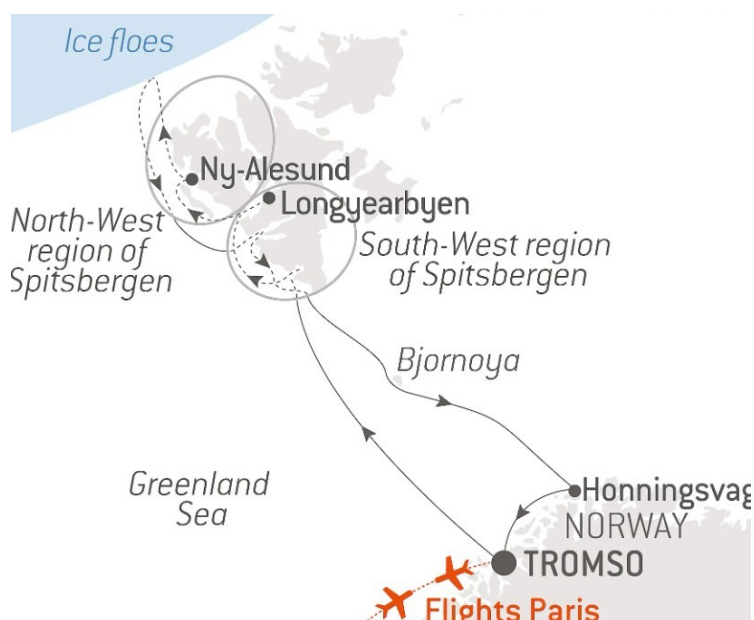


small-cruise-ships.com

info@small-cruise-ships.com

POLAR NIGHTS: FROM THE NORTH CAPE TO SPITSBERGEN LUXURY CRUISE

The writer Jørn Riel described the polar night as a "a world apart, [...] unique and fascinating, where nature reigns supreme and men keep a low profile." When the northern winter approaches, the sun hardly rises over the horizon any more: let yourself be guided towards a new temporality, the moment when a long dusk stretches out after the day, until the polar night which will extend until mid-February 2027 in Svalbard. From the delicious comfort of *_Le Commandant Charcot_* sailing from the jagged coastlines of Norway to the ice-covered reliefs of Spitsbergen, dive into the heart of landscapes lit by powdered hues and set off in search of the exhilarating spectacle of the Northern Lights and share unique moments, just a stone's throw away from the emblematic North Cape in Lapland, with the Sami, one of Europe's last indigenous communities.



ITINERARY

Day 1 - Tromsø

In the north of the Arctic circle you'll discover Tromsø, a secluded town located in the county of Troms. Norwegians call it the "Paris of the north". You'll soon see why when you discover its extensive neoclassical architectural heritage. A stunning example is the Arctic cathedral, a major monument whose stylistic purity echoes the outline of the mountains surrounding the town.

Day 2 - At sea aboard *Le Commandant Charcot*



The Small Cruise
Ship Collection

www.small-cruise-ships.com

01432 507 280 (within UK)

info@small-cruise-ships.com | small-cruise-ships.com



The Small Cruise Ship Collection

www.small-cruise-ships.com



small-cruise-ships.com

info@small-cruise-ships.com

Spend exceptional moments sailing aboard Le Commandant Charcot, the world's first luxury polar exploration vessel and the first PC2-class polar cruise ship capable of sailing into the very heart of the ice, on seas and oceans which the frozen conditions render inaccessible to ordinary ships. Le Commandant Charcot is fitted with oceanographic and scientific equipment selected by a committee of experts. Take advantage of the on-board lectures and opportunities for discussion with these specialists to learn more about the poles. Participate in furthering scientific research with PONANT and let us discover together what these fascinating destinations have yet to reveal to us.

[Day 3 - South-West Region of Spitsbergen](#)

Set sail for southwest Spitsbergen, immerse yourself in this environment unlike any other and explore its unexpected riches. In this natural sanctuary, the polar light combines with the changing weather of the Arctic, a big blue sky, the horizon scattered with clouds, the enveloping mist erasing the border between the land and the sea. Follow in the footsteps of the first explorers and admire the majestic fjords and glaciers sculpting the breathtaking landscapes, their icy waters shimmering beneath the midnight sun. The fjords, veritable cathedrals of ice, reveal their millennial secrets, while the glaciers, like sleeping giants, move slowly towards the sea, setting free sparkling icebergs. On the water, you might spot belugas and rorquals, while on the shores, seals and Arctic foxes add a touch of mystery to this living tableau, where the steep cliffs become breeding grounds for thousands of seabirds, like guillemots.

Southwest Spitsbergen is an ode to nature in its rawest and purest form.

[Day 4 - Longyearbyen, Spitsbergen](#)

Longyearbyen is the capital of the Norwegian Svalbard archipelago, located on Svalbard's main island, and is the northernmost territorial capital on the planet. With winter temperatures dropping to below 40°C, the landscapes of this mining town are simply breathtaking. The glaciers, the mountains stretching as far as the eye can see and the untouched nature, make you feel like you're in completely unexplored territory.

[Day 5 - Ny-Alesund](#)

During your cruise, discover Ny-Ålesund, a former mining town that has been transformed into a scientific base. Founded in 1916, this small town was the departure point for many Arctic expeditions, including those of the famous explorer Roald Amundsen. Don't miss a visit to the museum and its famous post office, considered to be the most northerly in the world!

[Day 6 - Navigating through the sea ice](#)

Enjoy the absolutely unique experience of sailing to the heart of the ice floe, this vast expanse of virgin, immaculate ice. The landscapes are constantly changing, shifting from a smooth, flat wilderness to a chaos of ice, then to channels of open water. Your ship will sail along these naturally open channels and



The Small Cruise Ship Collection

www.small-cruise-ships.com

01432 507 280 (within UK)

info@small-cruise-ships.com | small-cruise-ships.com



The Small Cruise Ship Collection

www.small-cruise-ships.com



small-cruise-ships.com

info@small-cruise-ships.com

through the areas where the frozen layer is thinnest, offering you the chance to experience magic maritime moments in the midst of drifting sea ice. It will also often be an opportunity to see a particular kind of fauna, totally dependent on the ice floe.

Day 7 - North-West region of Spitsbergen

A kingdom of contrasts and natural marvels dotted with islands and peninsulas, northwest Spitsbergen fascinates with its preserved beauty. On these pristine lands, infinity unveils itself, treating the eyes to beauty sculpted by nature and enhanced by the changing light. The fjords bathed by icy waters, the jagged mountains and the imposing glaciers stand majestically before you, like monumental sculptures. In these lands, where souls are filled with deep serenity, only the murmur of broken ice, bearing mysteries and legends, disturbs the calmness. Aboard our Zodiacs and in the company of naturalist-guides, get as close as possible to this unique fauna and discover this centre for scientific expedition departures. In the distance, majestic whales glide silently through the glacial waters, whereas seals, walrus and Arctic foxes add a playful touch of life. As Svalbard reindeer wander the vast expanses, Arctic terns liven up the polar sky with their gracious flight and polar bears, which you may be lucky enough to see, patrol magnificently along the icy shores.

Day 8 - South-West Region of Spitsbergen

Set sail for southwest Spitsbergen, immerse yourself in this environment unlike any other and explore its unexpected riches. In this natural sanctuary, the polar light combines with the

changing weather of the Arctic, a big blue sky, the horizon scattered with clouds, the enveloping mist erasing the border between the land and the sea. Follow in the footsteps of the first explorers and admire the majestic fjords and glaciers sculpting the breathtaking landscapes, their icy waters shimmering beneath the midnight sun. The fjords, veritable cathedrals of ice, reveal their millennial secrets, while the glaciers, like sleeping giants, move slowly towards the sea, setting free sparkling icebergs. On the water, you might spot belugas and rorquals, while on the shores, seals and Arctic foxes add a touch of mystery to this living tableau, where the steep cliffs become breeding grounds for thousands of seabirds, like guillemots. Southwest Spitsbergen is an ode to nature in its rawest and purest form.

Day 9 - Sailing along Bjørnøya (Bear Island)

Halfway between Norway and Spitsbergen, you will sail not far from the coastlines of Bjørnøya, the southernmost island of Svalbard. From your ship, observe this isolated piece of land discovered in 1596 by the Dutch navigator Willem Barents, then looking for the Northwest Passage. Following a tough fight between a polar bear and the members of the expedition, he dubbed the place Bear Island. Regularly covered by a thick layer of fog, Bjørnøya shelters a meteorological station built in 1923, which is still in operation. Declared a nature reserve in 2002, the island is above all home to an enormous colony of sea birds: skuas, guillemots, puffins, Tridactyl gulls, petrels, gulls and little auks all coexist here.

Day 10 - Honningsvåg



The Small Cruise Ship Collection

www.small-cruise-ships.com

01432 507 280 (within UK)

info@small-cruise-ships.com | small-cruise-ships.com



note that the sailing programme, shore visits and activities cannot be guaranteed, as they are subject to weather and ice conditions.

If you feel like you have arrived at the end of the world in Honningsvåg, it is because this is the case. Halfway between Oslo and the North Pole, it competes with Hammerfest for the status of "the northernmost town in Continental Europe". Colourful houses light up this charming and typically Norwegian fishing port nestled in the hollows of the region's mountainous terrain. Travellers come to stay in the village to go to the North Cape. At the end of the road, you will see the globe that indicates that you are at the very end of Europe. At this point, only the Svalbard archipelago separates you from the North Pole. There is sea as far as the eye can see. The Northern Lights, the view of the immense cliff plunging into the sea, the thousands of puffins, gannets and cormorants that spin around you: everything here is grandiose.

Day 11 - Tromsø

In the north of the Arctic circle you'll discover Tromsø, a secluded town located in the county of Troms. Norwegians call it the "Paris of the north". You'll soon see why when you discover its extensive neoclassical architectural heritage. A stunning example is the Arctic cathedral, a major monument whose stylistic purity echoes the outline of the mountains surrounding the town.

Please note:

The itinerary is subject to change based on port approvals and to comply with applicable government regulations. Please also



The Small Cruise Ship Collection

www.small-cruise-ships.com



small-cruise-ships.com

info@small-cruise-ships.com

YOUR SHIP: LE COMMANDANT-CHARCOT

YOUR SHIP:

Le Commandant-Charcot

VESSEL TYPE:

LENGTH:

PASSENGER CAPACITY:

BUILT/REFURBISHED:

With its hybrid propulsion combining liquefied natural gas (LNG) and electric generators, Le Commandant-Charcot has been designed to minimise the environmental impact of travel to the furthest latitudes. The decoration of the ship, designed by two internationally renowned design and architecture firms - the studio of Jean-Philippe Nuel and Wilmotte & Associes - is designed to be in harmony with the environment. The approach is contemporary with the desire to create a warm and elegant setting; stone, wood and leather recall the natural environment in which the ship is sailing. Equipped with just 135 staterooms including 31 suites with balconies and outside views, Le Commandant-Charcot welcomes you in an intimate and refined atmosphere. Outstanding gastronomy in the two restaurants, relaxation in the indoor pool surrounded by its winter garden, relaxation in the well-being area with sauna and Snow Room... Like on a private yacht, each of our guests is unique. PUBLIC AREAS Le Commandant-Charcot has many common areas that are designed and equipped to meet all of your needs while preserving the intimacy of each passenger. A 177 m² reception area includes: A reception/concierge desk, An expeditions desk, The ship's administrative services, The sales office, manned by

our Hospitality & Travel Manager officer, Our boutique which sells clothing, jewellery, beauty products, postcards and various accessories, The image & photo desk. The different lounges include a 302 m² main lounge including a 28 m² cigar lounge, a tea corner and a bar, with live music on selected evenings, A 400 m² panoramic bar and lounge, An open-air Bar. The recreation spaces Fitness & Beauty Corner: Fitness room: Elliptic, running machines, bicycles... Beauty Corner: Hairdresser, Massage rooms, Sauna, Snow Room, Nail Shop. Pool area: Indoor Pool and winter garden - Outdoor Pool Theatre: Capacity: 270-276 - Main show room for conferences and live entertainment on selected evenings - State-of-the-art audio and video technology. Leisure area: Public areas - Library - Medical centre. 16



Zodiacs on board.



The Small Cruise Ship Collection

www.small-cruise-ships.com

01432 507 280 (within UK)

info@small-cruise-ships.com | small-cruise-ships.com



The Small Cruise Ship Collection

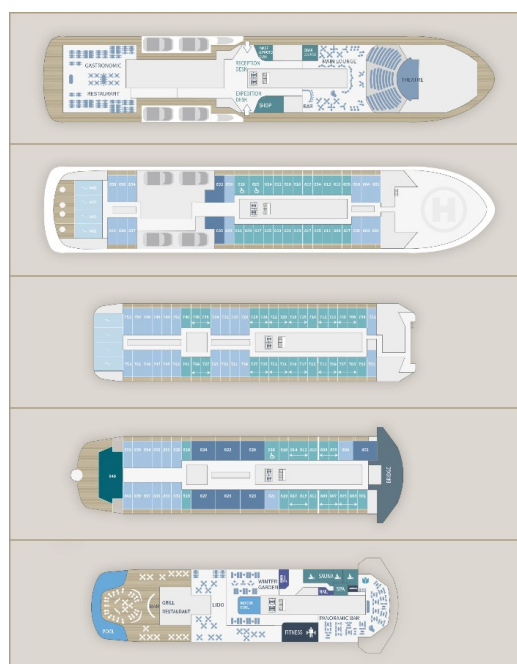
www.small-cruise-ships.com



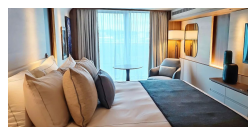
small-cruise-ships.com

info@small-cruise-ships.com

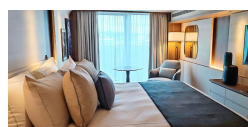
INSIDE YOUR SHIP



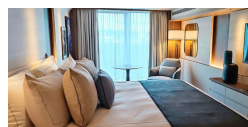
Deluxe Suite Deck 6



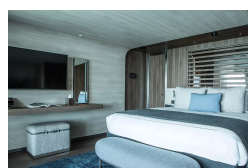
Deluxe Suite Deck 7



Deluxe Suite Deck 8



Duplex Suite



Grand Prestige Suite

Prestige Stateroom Deck 6

Prestige Stateroom Deck 7

Prestige Stateroom Deck 8

Prestige Suite Deck 7

Prestige Suite Deck 8



The Small Cruise Ship Collection

www.small-cruise-ships.com

01432 507 280 (within UK)

info@small-cruise-ships.com | small-cruise-ships.com



The Small Cruise Ship Collection

www.small-cruise-ships.com



small-cruise-ships.com

info@small-cruise-ships.com

PRICING

14-Oct-2026 to 24-Oct-2026

Privilege Suite Deck 8	£18095 GBP pp
Deluxe Suite Deck 7	£12399 GBP pp
Prestige Stateroom Deck 6	£11215 GBP pp
Deluxe Suite Deck 8	£12795 GBP pp
Duplex Suite	£24495 GBP pp
Prestige Stateroom Deck 8	£11615 GBP pp
Grand Prestige Suite	£17125 GBP pp
Prestige Suite Deck 7	£16139 GBP pp
Prestige Stateroom Deck 7	£11419 GBP pp
Prestige Suite Deck 8	£16629 GBP pp
Deluxe Suite Deck 6	£11909 GBP pp



The Small Cruise Ship Collection

www.small-cruise-ships.com

01432 507 280 (within UK)

info@small-cruise-ships.com | small-cruise-ships.com