

The Small Cruise Ship Collection

www.small-cruise-ships.com

small-cruise-ships.com

info@small-cruise-ships.com

PINTXOS, POETRY AND PRETTY PORT GEMS - WESTERN EUROPE CRUISE

Join the EUROPA on a cruise from the Basque Country into a midsummer night's dream: on the most beautiful coastlines of Western Europe, Spanish temperament, French lifestyle and British traditions combine to create unforgettable experiences.



ITINERARY

Day 1 Leixoes (Porto)/Portugal, departure 22.00 hrs

Day 2 Vigo/Spain, 07.00 – 18.00 hrs

Once a small fishing village, Vigo now combines maritime flair with Galician zest for life and many opportunities to enjoy yourself under the Spanish sun. The old town district of Cidade Vella, with its narrow winding streets and historic archways, will awaken your spirit of discovery. Be sure to try out the authentic restaurants serving freshly caught oysters and fish specialities

The Small Cruise Ship Collection

www.small-cruise-ships.com

01432 507 280 (within UK)

info@small-cruise-ships.com | small-cruise-ships.com



The Small Cruise Ship Collection

www.small-cruise-ships.com

small-cruise-ships.com

info@small-cruise-ships.com

as well. A visit to MARCO, the Museum of Contemporary Art, which focuses on the work of up-and-coming young artists, promises a wealth of inspiration. Another place to visit for some lasting memories is Monte do Castro, which offers a magnificent view of Vigo and the surrounding area next to an old fortress.

Day 3 Relaxation at sea

Day 4 Bilbao/Spain, 08.00 – 24.00 hrs

Surrounded by the green mountains of northern Spain, Bilbao welcomes you to a creative metropolis that blends history with a passion for the future. The world-famous Guggenheim Museum, with its gleaming titanium facade, symbolises this transformation. Where shipyards once dominated, Frank O. Gehry's architectural masterpiece now houses one of the world's most important collections of contemporary art. The historic heart of Bilbao beats in the alleys of the old town, where authentic restaurants tempt visitors with pintxos, the Basque version of tapas. Thanks to the long lay time, you can enjoy the special flair of the city until late in the evening.

Day 5 Saint-Jean-de-Luz/France, 08.00 – 18.00 hrs

A real gem on the French coast of the Basque Country - Saint-Jean-de-Luz is an enchanting little place with its traditional fishing port and elegant beach front promenade. The restaurants and bars are inviting places to try the region's famous specialities, including Gateau Basque and fresh seafood. The charming old part of town with its narrow cobbled streets and colourful timbered houses is steeped in history: the impressive Church of St. John the Baptist hosted the wedding of the Sun King Louis XIV and Maria Teresa of Spain in 1660. The nearby Grande Plage is a wonderful place to relax and enjoy the sunshine - perfect for soaking up the charm of the Basque

coast.

Day 6 Relaxation at sea

Day 7 Concarneau/France, 07.00 – 15.00 hrs

It is easy to be swept away by the French art of good living in this charming port town in southern Brittany. Concarneau's maritime spirit is best witnessed in its fine sandy beaches and bustling marina. The romantic old town of Ville Close, surrounded by walls and water, is spectacularly situated. A stroll through cobbled streets, accessible only via a narrow footbridge, takes you past venerable granite houses, small creperies, art galleries and shops selling regional specialities. The city walls - Les Remparts - themselves invite you to stroll along them and offer you a fantastic view of the bustling fishing harbour and the boats glistening in the sun.

Day 8 Fowey/England/Great Britain, 08.00 – 19.00 hrs

The charm of Fowey, a small harbour town on the south coast of Cornwall, is best discovered on a leisurely stroll through the winding lanes. The pastel-coloured houses nestle picturesquely into the hillside, and after a short climb from Bull Hill you can enjoy views of the river. The wildly romantic landscape of secluded coves and green meadows are an invitation to lose yourself in your daydreams as you wander along the magnificent coastal path. But Fowey offers more than just beautiful views: first-class restaurants and galleries provide a wide range of opportunities to enjoy and relax.

Day 9 Dartmouth/England/Great Britain, 07.00 – 18.00 hrs

Picturesquely situated on the "English Riviera", Dartmouth in the south of England boasts a wonderful maritime atmosphere. The natural harbour is lined with historic houses, and elegant yachts

The Small Cruise Ship Collection
www.small-cruise-ships.com

01432 507 280 (within UK)

info@small-cruise-ships.com | small-cruise-ships.com



The Small Cruise Ship Collection

www.small-cruise-ships.com

small-cruise-ships.com

info@small-cruise-ships.com

are moored at anchor while the cadets of the Royal Naval College proudly walk along the promenade. Even the arrival via the River Dart, flanked by Kingswear Castle and Dartmouth Castle, is impressive. The first defences were built as early as 1388 - and the historic fortifications still give the coastal town its special charm today. The nearby St Petrox Church also tells of times gone by and blends harmoniously into the idyllic landscape.

Day 10 Saint Peter Port/Guernsey/Channel Islands/Great Britain, 07.00 - 19.00 hrs

The idyllic capital of Guernsey beautifully combines British traditions and French influences. A stroll through the old town, past pastel-coloured houses and small boutiques, can be perfectly combined with a visit to Candie Gardens: the award-winning Victorian gardens enchant visitors with their colourful sea of flowers and offer fantastic views over Saint Peter Port and the surrounding countryside. If you want to learn more about Guernsey's past, you should visit the mighty Castle Cornet - four museums here bring different eras of the island's history to life. A visit to Hauteville House, where Victor Hugo lived and worked during his exile, is a must for literature lovers.

Day 11 St Helier/Jersey/Channel Islands/Great Britain, 07.00 - 18.00 hrs

St Helier on Jersey welcomes you with plenty of charm and a relaxed way of life. The heart of this hospitable city has been beating at the Central Market for around 150 years: a multitude of stalls entice visitors to the Victorian market hall with an overwhelming selection of regional delicacies and fragrant flowers. In the environs of Royal Square, the elegant shopping streets tempt you to indulge in an extensive shopping spree - or while away some time and enjoy yourself in the restaurants of the lively marina serving authentic cuisine. A visit to Elizabeth

Castle, which can be reached on foot or by ferry depending on the tides, is also guaranteed to leave a lasting impression. Those who climb the steps to the top of the castle will be rewarded with a stunning view.

Day 12 Cowes/Isle of Wight/England/Great Britain, 07.00 - 14.00 hrs

A diamond-shaped island full of history and charm - the Isle of Wight lies off the south coast of England and attracts visitors with its unique shape and impressive nature. Once part of Hampshire, it has been independent since 1974, with Newport as its capital. The striking chalk hills stretch across the centre of the island and plunge dramatically into the sea in the west. In Cowes, one of the largest towns on the island, nature lovers meet sailing enthusiasts, as Cowes is particularly known for the Admiral's Cup. Hikers can enjoy the well-signposted trails with breathtaking views of the steep coast and imposing chalk cliffs.

Day 13 Relaxation at sea

Day 14 Hamburg/Germany, arrival 07.00 hrs Individual travel arrangements from cruise arrival point

Please Note:

* The shore activities are not included in the cruise price and are in the planning stage. Subject to change.

The Small Cruise Ship Collection

www.small-cruise-ships.com

01432 507 280 (within UK)

info@small-cruise-ships.com | small-cruise-ships.com

The Small Cruise Ship Collection

www.small-cruise-ships.com

small-cruise-ships.com

info@small-cruise-ships.com

YOUR SHIP: EUROPA

YOUR SHIP: Europa

VESSEL TYPE:

LENGTH:

PASSENGER CAPACITY:

BUILT/REFURBISHED:

Extensive space for a maximum of 400 guests A crew-to-guest ratio of almost one to one Outside suites only, most with a veranda Five restaurants for the ultimate in culinary indulgence - including THE GLOBE by three-star chef Kevin Fehling Top-class entertainment: experience international artists and experts live on board EUROPA Refresh: new fitness and wellness concepts for even more well-being MS EUROPA is an award-winning luxury cruise ship renowned for setting global standards in refined small-ship cruising. Accommodating a maximum of just 400 guests, the ship offers an intimate and highly personalised experience, supported by an almost one-to-one crew-to-guest ratio. Designed around the concept of casual luxury, EUROPA combines spacious surroundings, attentive service, and elegant all-suite accommodation, with all suites featuring ocean views and most offering private verandas. Onboard, guests can enjoy five exceptional restaurants, including fine dining concepts created in collaboration with acclaimed chefs, alongside world-class entertainment, wellness facilities, and thoughtfully curated enrichment experiences. The ship's smaller size allows access to unique itineraries and exclusive ports beyond the reach of larger vessels, while recent EUROPA Refresh

enhancements have introduced updated fitness and wellness concepts for an even more elevated onboard experience. Blending sophistication, comfort, and flexibility, MS EUROPA delivers a truly premium voyage to destinations



worldwide.

The Small Cruise Ship Collection

www.small-cruise-ships.com

01432 507 280 (within UK)

info@small-cruise-ships.com | small-cruise-ships.com

The Small Cruise Ship Collection

www.small-cruise-ships.com

small-cruise-ships.com

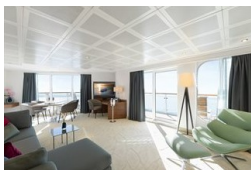
info@small-cruise-ships.com

INSIDE YOUR SHIP

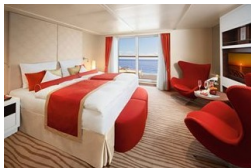
Penthouse Deluxe Suite



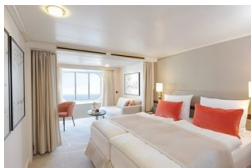
Penthouse Grand Suite



SPA Suite



Suite with panorama window



Veranda Suite Cat. 4-5

Veranda Suite Cat. 6-7



The Small Cruise Ship Collection

www.small-cruise-ships.com

small-cruise-ships.com

info@small-cruise-ships.com

PRICING

29-Jul-2028 to 11-Aug-2028

Suite with panorama window	£5285 GBP pp
Veranda Suite Cat. 4-5	£7345 GBP pp
Veranda Suite Cat. 6-7	£9519 GBP pp
SPA Suite	£10285 GBP pp
Penthouse Deluxe Suite	£16349 GBP pp
Penthouse Grand Suite	£25919 GBP pp