

# The Small Cruise Ship Collection

www.small-cruise-ships.com

small-cruise-ships.com

info@small-cruise-ships.com

## PEARLS OF THE WESTERN MEDITERRANEAN - SMALL SHIP CRUISE

Madeira's wild nature, Spain's lively cities and French savoir-vivre promise unforgettable moments: live life to the fullest and enjoy the Mediterranean flair until the evening hours.



### ITINERARY

Day 1 Santa Cruz de Tenerife/Tenerife/Canary Islands/Spain, departure 22.00 hrs

Day 2 Relaxation at sea

Day 3 Funchal/Madeira/Portugal, 07.00 - 24.00 hrs

Funchal, the capital of Madeira, is located on the slopes of a mountain range up to 1,200 m (3,937 ft) high and, like the island on the whole, is known for its magnificent variety of flowers. Blessed with mild temperatures all year round, Madeira

The Small Cruise Ship Collection

www.small-cruise-ships.com

01432 507 280 (within UK)

info@small-cruise-ships.com | small-cruise-ships.com



## The Small Cruise Ship Collection

[www.small-cruise-ships.com](http://www.small-cruise-ships.com)

[small-cruise-ships.com](http://small-cruise-ships.com)

[info@small-cruise-ships.com](mailto:info@small-cruise-ships.com)

offers steep coastlines, green valleys and imposing peaks - a paradise for nature lovers. In the 16th century, Funchal was an important port for ships sailing to Africa and South America. Today, the focus is on the cultivation and trade of the famous Madeira wine. The seafront promenade Avenida do Mar extends from the old town to the fishing harbour and offers romantic views of the sea and the city lights, especially in the evening hours. Funchal combines natural beauty with cultural heritage and invites you to enjoy the island to the full.

#### Day 4 Porto Santo/Madeira/Portugal, 07.00 - 18.00 hrs

A long golden sandy beach stretches 9 km (5.6 mi.) along the coast of Porto Santo, around 42 km (26.1 mi.) north-east of Madeira. The small island attracts visitors with its Portuguese lifestyle, great restaurants, hiking trails and water sports options - perfect for a relaxing beach holiday. Alongside the fascinating basalt formations of Pico de Ana Ferreira, visitors can also immerse themselves in history: Casa Colombo - Museu do Porto Santo is dedicated to the famous navigator Columbus, who is said to have once lived on the island.

#### Day 5 Relaxation at sea

#### Day 6 Portimao/Portugal, 07.00 - 18.00 hrs

The copper-red cliffs along the Algarve coast, which rise up almost vertically from the deep-blue sea, make Portimao a real highlight. The charming old town and the marina are perfect for relaxed walks, while the Praia da Rocha - an endless, golden shimmering beach - invites you to enjoy soaking up some rays of sun. When you gaze out over the beautiful bays, dune islands and crystal-clear water, everyday life will quickly become a distant memory.

#### Day 7 Cadiz/Spain, 07.00 - 19.00 hrs

The white buildings of Cadiz appear on the horizon, while the golden domes of the cathedral reflect the bright blue sky. The screeches of seagulls and the sound of the waves are carried on the wind. Cadiz, with its history dating back over 3,000 years, was once a lively trading centre. Today, the city retains its pride in its majestic palaces, the Miradores, which offer a breathtaking view over the endless sea. And as you approach the long sandy beach, you almost expect Halle Berry to emerge from the waves - as she did in the famous James Bond scene filmed here.

#### Day 8 Malaga/Spain, 08.00 - 24.00 hrs

Andalusia's second-largest city exudes the scent of orange groves and the heat of the sun, which shines over the Bay of Malaga. The majestic Montes de Malaga mountain range is just a few kilometres north of the city, whereas the 130 m (426 ft) high Gibralfaro rises up in the city centre: from the walls of the Castillo de Gibralfaro, you can see Malaga in all its beauty - with the old town dominated by the elegant towers of the cathedral, one of the most beautiful in the Mediterranean. Beneath the castle are the romantic gardens of the Moorish Alcazaba fortress, a great place to while away some time. Wine lovers will appreciate the fertile soils of the Vega, which produce wines like Pedro Ximenez. Malaga is a feast for all the senses.

#### Day 9 Relaxation at sea

#### Day 10 Valencia/Spain, 08.00 - 18.00 hrs

Valencia impresses with its age-old buildings and modern architecture. The heart of the old town is the Plaza de la Reina with its impressive cathedral, with a bell tower offering fantastic views over the city. It's well worth taking a walk through the

The Small Cruise Ship Collection

[www.small-cruise-ships.com](http://www.small-cruise-ships.com)

01432 507 280 (within UK)

[info@small-cruise-ships.com](mailto:info@small-cruise-ships.com) | [small-cruise-ships.com](http://small-cruise-ships.com)



## The Small Cruise Ship Collection

[www.small-cruise-ships.com](http://www.small-cruise-ships.com)

[small-cruise-ships.com](http://small-cruise-ships.com)

[info@small-cruise-ships.com](mailto:info@small-cruise-ships.com)

Mercado Central, where local specialities await culinary enthusiasts. Futuristic charm comes from the Ciutat de les Arts i les Ciències, an impressive complex of buildings and parkland designed by Santiago Calatrava and Felix Candela and incorporating an opera, science museum and aquarium.

**Day 11 Port Vendres/France, 14.00 - 24.00 hrs**

Port Vendres, a harbour brimming with authenticity and maritime life, lies between the rolling vineyards of the Cote Vermeille and the deep-blue waters of the Mediterranean. For centuries, seafaring has shaped this place, which is considered one of the few deep natural harbours on the French Mediterranean coast. Fishing boats and sailing yachts line the quays, while freshly caught fish and regional specialities are served in the small restaurants. A walk takes you past historic buildings and the lighthouse at Cap Bear to viewpoints offering wonderful vistas of the bay. Port Vendres combines authenticity, zest for life and Mediterranean flair in a wonderfully harmonious way.

**Day 12 Sete/France, 8.00 - 19.00 hrs**

The charming town of Sete is often referred to as the "Venice of Languedoc" because of its numerous canals that wind their way picturesquely through the town. Fishing boats and sailing yachts lie side by side in the idyllic harbour, and in the small restaurants in the harbour you can sample freshly caught fish and the famous squid speciality, Tielle Setoise. Mont Saint-Clair is also worth a climb: from its platform, you can enjoy a spectacular panoramic view over the city's rooftops, the sea and the lagoon landscape.

**Day 13 Monte Carlo/Monaco, arrival 13.00 hrs Overnight stay on board**

Monte Carlo, the most famous of the nine districts that make up the Principality of Monaco, offers the appeal of luxury and

sophisticated charm. The world's second-smallest state may have no official capital, but Monte Carlo is its centrepiece. Founded by Prince Charles III, who had the famous casino built in the 1860s, it has become a symbol of elegance renowned for its gambling scene. Monaco-Ville, the oldest district, sits majestically on top of a rocky peninsula and is home to the magnificent Prince's Palace. The magnificent opera and the park with gorgeous views over the Cote d'Azur ensure Monte Carlo is an experience for all the senses.

**Day 14 Monte Carlo/Monaco**

**Please Note:**

\* The shore activities are not included in the cruise price and are in the planning stage. Subject to change.

The Small Cruise Ship Collection  
[www.small-cruise-ships.com](http://www.small-cruise-ships.com)

**01432 507 280** (within UK)

[info@small-cruise-ships.com](mailto:info@small-cruise-ships.com) | [small-cruise-ships.com](http://small-cruise-ships.com)

# The Small Cruise Ship Collection

[www.small-cruise-ships.com](http://www.small-cruise-ships.com)

[small-cruise-ships.com](http://small-cruise-ships.com)

[info@small-cruise-ships.com](mailto:info@small-cruise-ships.com)

## YOUR SHIP: EUROPA

**YOUR SHIP:** Europa

**VESSEL TYPE:**

**LENGTH:**

**PASSENGER CAPACITY:**

**BUILT/REFURBISHED:**

Extensive space for a maximum of 400 guests A crew-to-guest ratio of almost one to one Outside suites only, most with a veranda Five restaurants for the ultimate in culinary indulgence - including THE GLOBE by three-star chef Kevin Fehling Top-class entertainment: experience international artists and experts live on board EUROPA Refresh: new fitness and wellness concepts for even more well-being MS EUROPA is an award-winning luxury cruise ship renowned for setting global standards in refined small-ship cruising. Accommodating a maximum of just 400 guests, the ship offers an intimate and highly personalised experience, supported by an almost one-to-one crew-to-guest ratio. Designed around the concept of casual luxury, EUROPA combines spacious surroundings, attentive service, and elegant all-suite accommodation, with all suites featuring ocean views and most offering private verandas. Onboard, guests can enjoy five exceptional restaurants, including fine dining concepts created in collaboration with acclaimed chefs, alongside world-class entertainment, wellness facilities, and thoughtfully curated enrichment experiences. The ship's smaller size allows access to unique itineraries and exclusive ports beyond the reach of larger vessels, while recent EUROPA Refresh

enhancements have introduced updated fitness and wellness concepts for an even more elevated onboard experience. Blending sophistication, comfort, and flexibility, MS EUROPA delivers a truly premium voyage to destinations



worldwide.

The Small Cruise Ship Collection  
[www.small-cruise-ships.com](http://www.small-cruise-ships.com)

01432 507 280 (within UK)

[info@small-cruise-ships.com](mailto:info@small-cruise-ships.com) | [small-cruise-ships.com](http://small-cruise-ships.com)

# The Small Cruise Ship Collection

[www.small-cruise-ships.com](http://www.small-cruise-ships.com)

[small-cruise-ships.com](http://small-cruise-ships.com)

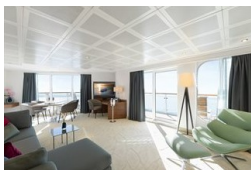
[info@small-cruise-ships.com](mailto:info@small-cruise-ships.com)

## INSIDE YOUR SHIP

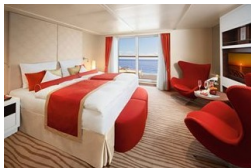
Penthouse Deluxe Suite



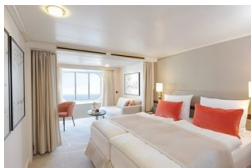
Penthouse Grand Suite



SPA Suite



Suite with panorama window



Veranda Suite Cat. 4-5

Veranda Suite Cat. 6-7



The Small Cruise  
Ship Collection

[www.small-cruise-ships.com](http://www.small-cruise-ships.com)

[small-cruise-ships.com](http://small-cruise-ships.com)

[info@small-cruise-ships.com](mailto:info@small-cruise-ships.com)

## PRICING

13-Jun-2028 to 26-Jun-2028

Suite with panorama window	£5415 GBP pp
Veranda Suite Cat. 4-5	£7519 GBP pp
Veranda Suite Cat. 6-7	£9765 GBP pp
SPA Suite	£10545 GBP pp
Penthouse Deluxe Suite	£16765 GBP pp
Penthouse Grand Suite	£26575 GBP pp

The Small Cruise  
Ship Collection

[www.small-cruise-ships.com](http://www.small-cruise-ships.com)

01432 507 280 (within UK)

[info@small-cruise-ships.com](mailto:info@small-cruise-ships.com) | [small-cruise-ships.com](http://small-cruise-ships.com)