



The Small Cruise
Ship Collection

www.small-cruise-ships.com



small-cruise-ships.com

info@small-cruise-ships.com

PASSAGE THROUGH THE MELANESIAN ARC - SMALL SHIP CRUISE

The heart of Melanesia, connecting Papua New Guinea, the Solomon Islands and Vanuatu. Remote islands accessible only by small ship, where ancient 'kastom' traditions thrive and islanders maintain subsistence lifestyles that have remained essentially unchanged for centuries.



ITINERARY

Day 1: Depart Port Moresby

Enjoy one complimentary night at the Hilton Hotel Port Moresby before your voyage, then join your fellow passengers in the meeting room from 2:30pm for transfers to Coral Adventurer. Board at 4:00pm, where you will meet our expedition staff as they introduce you to the journey and the many experiences you will enjoy. This evening, join the Captain's welcome drinks and meet your crew and fellow guests as the sun sets.

At Sea

The Small Cruise
Ship Collection

www.small-cruise-ships.com

01432 507 280 (within UK)

info@small-cruise-ships.com | small-cruise-ships.com



The Small Cruise Ship Collection

www.small-cruise-ships.com



small-cruise-ships.com

info@small-cruise-ships.com

Enjoy onboard presentations about Melanesian culture and the fascinating anthropological history of how Austronesian and Papuan peoples populated these islands through the centuries.

Louisiade Archipelago

Swim over a nearly intact Japanese Zero fighter plane in Deboyne Lagoon and connect with villagers maintaining traditional subsistence lifestyles. In the afternoon, explore limestone karst caves and snorkel at spectacular Panasia Beach.

Laughlan Atoll

Witness the traditional canoe-building mastery in this remote archipelago. Meet the friendly villagers of Bodaluna and learn about their subsistence gardening, fishing and participation in the ancient Kula Ring trading network.

Ghizo & Njari Island

Enter the Solomons Islands with clearance via Kennedy Island, where former President John F Kennedy swam ashore during WWII. Snorkel the crystal-clear waters of uninhabited Njari Island, teeming with colourful corals and marine life.

Kerehikapa | Amarvon Island

Participate in conservation efforts by helping to release turtle hatchlings from this important breeding sanctuary. Learn about loggerhead, green and hawksbill turtle protection in this 40,000-acre marine conservation area.

Marovo Lagoon

Explore one of the world's largest double-barrier enclosed lagoons, a natural wonder proposed for World Heritage listing for fantastic snorkelling and diving opportunities.

Marau Sound

Experience the mesmerising Ètetung water dance performed by women in hand-woven costumes. This soothing sonic and visual performance creates hypnotic rhythms through water while singing traditional songs. Here, the Marau people depend on their natural environment, practising subsistence farming and fishing.

Santa Ana Island

Discover this small island famous for elaborate bone fishhooks and imaginative fishing floats. Walk through forests filled with colourful orchids and learn about the Austrian anthropologist who studied this community in 1932.

At Sea

Sail towards Vanuatu while enjoying presentations about the volcanic islands ahead and their unique cultural practices, including cargo cults and traditional dance ceremonies. Enjoy the onboard program with lectures and cooking demonstrations.

Espiritu Santo | Luganville

As we enter Vanuatu, for divers, explore Million Dollar Point, where Americans sunk vehicles after WWII rather than sell them. Dive amongst wrecks turned into coral reefs, now home to diverse marine life and swim in the one of Malo Island's mysterious 'blue holes'.

Ambrym Island | Fanla

Witness the famous Rom dance performed in the shadow of active Benbow and Marum volcanoes. This traditional ceremony connects men to the spirit world on Vanuatu's 'black magic' island with its iconic black sand beaches.

Nguna Island



The Small Cruise Ship Collection

www.small-cruise-ships.com

01432 507 280 (within UK)

info@small-cruise-ships.com | small-cruise-ships.com



The Small Cruise Ship Collection

www.small-cruise-ships.com



small-cruise-ships.com

info@small-cruise-ships.com

Snorkel or dive in the Nguna-Pele Marine Protected Area amongst stunning coral gardens, sea grass beds and mangrove forests. An optional, challenging hike to extinct volcano craters Mount Tapuora and Mount Marow is recommended for the very fit.

Tanna Island | Waisisi

Take a 4WD trip to peer into active Mount Yasur volcano, whose glow attracted Captain Cook in 1774. Learn about the unique John Frum Cargo Cult and Tannese culture on this remarkably fertile island.

Day 15: Arrive Port Vila

Disembark at 7:00am in Vanuatu's capital. Reflect on the deep cultural connections you've made across Melanesia's sacred islands, carrying with you a deeper understanding of these remarkable Pacific communities.

Please note:

Itineraries are subject to change.



The Small Cruise
Ship Collection

www.small-cruise-ships.com

01432 507 280 (within UK)

info@small-cruise-ships.com | small-cruise-ships.com



The Small Cruise
Ship Collection

www.small-cruise-ships.com



small-cruise-ships.com

info@small-cruise-ships.com

YOUR SHIP: CORAL ADVENTURER

YOUR SHIP: Coral Adventurer

VESSEL TYPE:

LENGTH:

PASSENGER CAPACITY:

BUILT/REFURBISHED:

Launched in 2018 with her maiden voyage in 2019, Coral Adventurer has been designed and built to take you closer to unspoilt vistas in comfort, style and safety. A culmination of two years of design and three decades of passion for expedition cruising. BIGGER IS NOT BETTER At a time when cruise ships get larger and glitzier, we remain stubbornly compact and intimate. Our ships are designed to take you to unspoilt destinations not accessible to large ships. We want you to have the luxury of space, dine with whom you please, or find your quiet corner on deck. So Coral Adventurer has just 60 spacious cabins. This preserves the intimate atmosphere we are known for without sacrificing the stability and comfort of a true ocean going vessel. BUILT FOR DISCOVERY The Coral Adventurer features the trademark dual 'Xplorer' tenders cradled on a hydraulic platform slung off the back of the ship, enabling our guests to go ashore in comfort and ease. The shallow draft of the ship enables us to go closer to shore than larger ships. Together with a renowned expedition team, this new ship will offer the most advanced expedition capabilities of any small ship afloat. BUILT FOR COMFORT With active stabilisers dampening sea motion, mostly balcony cabins, and interiors designed with the colours and

textures of tropical Queensland, the Coral Adventurer is a comfortable ship. She features promenade decks, generous communal areas that accommodate all guests, a passenger elevator, and an open kitchen where you can observe our chefs whip up small batch cuisine from locally sourced ingredients. BUILT FOR PERSONAL SERVICE The Coral Adventurer will continue a proud tradition of Australian flagged vessels with friendly and professional Australian crew. The onboard atmosphere remains refreshingly informal and intimate. Take your seat at our bridge lounge, chat with the captain at your leisure or accompany our chefs on a market tour. Food and wine features Single seating dining area with communal 'wine table' finished with Australian stone; serving buffet breakfast and lunch, and multi-course table d'hote dinners Showcase galley visible to guests for fresh small-batch cuisine featuring Australian produce Multiple indoor and outdoor bars, including the Explorer bar on the sundeck for sunset drinks with 180 degree views Curated wine cellar featuring modestly priced boutique wines for daily drinking and exceptional vintage Australian reds. Guest comfort All outside guest cabins with en-suite bathrooms; majority have private balcony Active stabilisers to dampen sea motion Gym equipped with elliptical trainers and treadmills Passenger elevator Wi-Fi available in all

The Small Cruise
Ship Collection

www.small-cruise-ships.com

01432 507 280 (within UK)

info@small-cruise-ships.com | small-cruise-ships.com



The Small Cruise Ship Collection

www.small-cruise-ships.com



small-cruise-ships.com

info@small-cruise-ships.com



guest areas



The Small Cruise Ship Collection

www.small-cruise-ships.com

01432 507 280 (within UK)

info@small-cruise-ships.com | small-cruise-ships.com



The Small Cruise Ship Collection

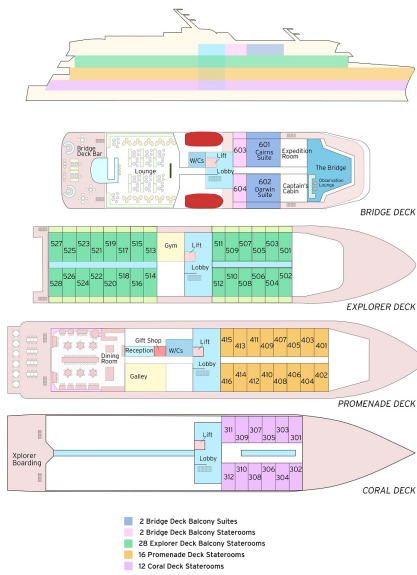
www.small-cruise-ships.com



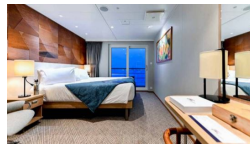
small-cruise-ships.com

info@small-cruise-ships.com

INSIDE YOUR SHIP



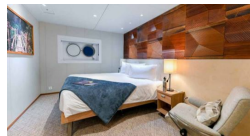
BRIDGE DECK BALCONY STATEROOM



BRIDGE DECK BALCONY SUITE

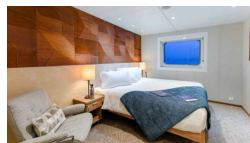


CORAL DECK STATEROOM



EXPLORER DECK BALCONY STATEROOM

PROMENADE DECK STATEROOM





The Small Cruise Ship Collection

www.small-cruise-ships.com



small-cruise-ships.com

info@small-cruise-ships.com

PRICING

12-Nov-2026 to 26-Nov-2026

PROMENADE DECK STATEROOM	£8975 GBP pp
EXPLORER DECK BALCONY STATEROOM	£11475 GBP pp
BRIDGE DECK BALCONY STATEROOM	£12475 GBP pp
BRIDGE DECK BALCONY SUITE	£15975 GBP pp
CORAL DECK STATEROOM	£7475 GBP pp

19-Oct-2027 to 02-Nov-2027

BRIDGE DECK BALCONY SUITE	£15975 GBP pp
CORAL DECK STATEROOM	£7475 GBP pp
EXPLORER DECK BALCONY STATEROOM	£11475 GBP pp
BRIDGE DECK BALCONY STATEROOM	£12475 GBP pp
PROMENADE DECK STATEROOM	£8975 GBP pp



The Small Cruise Ship Collection

www.small-cruise-ships.com

01432 507 280 (within UK)

info@small-cruise-ships.com | small-cruise-ships.com