

The Small Cruise Ship Collection

www.small-cruise-ships.com

small-cruise-ships.com

info@small-cruise-ships.com

PAGODA SPLENDOUR AND BIG CITY LIGHTS - SOUTHEAST ASIA CRUISE

Embark on a journey to discover Asia's fascinating contrasts: in the heart of the megacities, ancient customs combine with a modern lifestyle, while time seems to stand still forever under the coconut trees.



ITINERARY

Day 1 Ho Chi Minh City/Vietnam, departure 24.00 hrs

Day 2 Relaxation at sea

Day 3 Kampong Saom (Sihanoukville)/Cambodia, 08.00 – 20.00 hrs
Welcome to Cambodia in the former Kampong Saom, now known as Sihanoukville, in an idyllic location on the peninsula in the Gulf of Thailand. Elegant villas from the French colonial era characterise its flair as does the hustle and bustle of a modern

The Small Cruise Ship Collection

www.small-cruise-ships.com

01432 507 280 (within UK)

info@small-cruise-ships.com | small-cruise-ships.com



The Small Cruise Ship Collection

www.small-cruise-ships.com

small-cruise-ships.com

info@small-cruise-ships.com

harbour town. Kampong Saom looks back on a long history as a popular seaside resort: along the coastline, there are several dream beaches lined with coconut trees that gently sway in the sea breeze. Relax to your heart's content and take a refreshing dip in the turquoise sea. Thanks to the long lay time, you can enjoy the beauty of Kampong Saom until midnight.

Day 4 Ko Kood/Thailand, 08.00 - 18.00 hrs

Enjoy a day on Ko Kood, where the gentle sound of the waves and the sun reflecting off the turquoise-blue sea promise a wonderful day at the beach. Find your peaceful spot to relax under the shade of the coconut trees and let your gaze wander across the ocean. Feel like a trip around Ko Kood? Small waterfalls in the interior of the island glisten in the sun, and on narrow paths through the dense jungle you can encounter colourful butterflies and tropical birds.

Day 5 Laem Chabang (Bangkok)/Thailand, arrival 07.00 hrs

Laem Chabang, the country's most important port, welcomes you to the Gulf of Thailand. Relax on one of the palm-lined beaches or make the big city your starting point for exploring Bangkok. Admire the splendour of the Grand Palace and the majestic Emerald Buddha in this megacity and follow the aromas of pad thai and satay through the streets. When night falls, Bangkok reveals its second face: life pulsates all night long in sparkling rooftop bars, bustling markets and along the legendary Khao San Road. Take advantage of your extended stay to get to know all aspects of this diverse metropolis.

Day 6 Laem Chabang (Bangkok)/Thailand, departure 19.00 hrs

Day 7 Ko Samui/Thailand, 12.00 - 19.00 hrs

Ko Samui, Thailand's third-largest island, is a tropical gem with white beaches, turquoise-blue sea and lush coconut trees. According to legend, it has been inhabited for 1,500 to 2,000 years - today, a ring road extends kilometres around the island, passing scenic bays and lively villages. The beaches of Chaweng and Lamai are particularly popular, where soft sand and gentle waves promise pure relaxation. Those interested in culture can visit the numerous Buddhist temples - above all, Wat Phra Yai with its famous "Big Buddha": the 12 m (39 ft) high gilded statue sits towering up on the small neighbouring island of Ko Fan and is considered Samui's landmark.

Day 8 Relaxation at sea

Day 9 Pulau Tioman/Malaysia, 08.00 - 17.00 hrs

Pulau Tioman off the east coast of Malaysia is considered a tropical island paradise with white beaches, palm-lined bays and crystal-clear water. Majestic granite cliffs add dramatic accents to the coastline, while the offshore coral reefs are home to a colourful underwater world with parrotfish, sea turtles and gentle reef sharks - a dream destination for snorkellers and divers.

Day 10 Singapore/Singapore, arrival 08.00 hrs

Singapore combines modern glamour with deeply rooted traditions. The smallest city in Southeast Asia, whose name means "Lion City", boasts an exciting mix of futuristic buildings, historic districts and green oases. The city's landmark, the Merlion, stands guard over the harbour, while its skyline is dominated by the impressive Marina Bay Sands and its breathtaking SkyPark - featuring one of the longest swimming pools in the world. Singapore is a great place for strolling along the busy Orchard Road, discovering long-standing traditions in

The Small Cruise Ship Collection

www.small-cruise-ships.com

01432 507 280 (within UK)

info@small-cruise-ships.com | small-cruise-ships.com



The Small Cruise
Ship Collection

www.small-cruise-ships.com

small-cruise-ships.com

info@small-cruise-ships.com

Chinatown and experiencing the future of urban nature in the Gardens by the Bay. Your ship will stay overnight so that you can enjoy the impressions well into the evening.

Day 11 Singapore/Singapore, departure 18.00 hrs

Day 12 Malacca/Malaysia, 08.00 - 18.00 hrs

Malacca, on the south-west coast of the Malaysian peninsula, attracts visitors with its rich cultural heritage and historic atmosphere. The oldest city in Malaysia has been shaped over the centuries by a variety of influences and was designated a UNESCO World Heritage Site in 2008. The salmon-red buildings on Dutch Square and the A Famosa fortress bring the colonial era back to life, while the Chinese Cheng Hoon Teng temple and the Kampung Kling mosque reflect the religious diversity of the city. Malacca is a fascinating testament to its eventful history and offers visitors the opportunity to dive into the past as well as enjoy the vibrant present-day life in the city.

Day 13 Port Kelang (Kuala Lumpur)/Malaysia, arrival 07.00 hrs Overnight stay on board

From Port Kelang, you can embark on a discovery tour of exciting Kuala Lumpur, the capital city of Malaysia, only one hour away. KL, as the city is known, offers a fascinating blend of modernity and tradition. The majestic Petronas Twin Towers, the tallest twin towers in the world, dominate the skyline, while there are plenty of exotic discoveries to be made in the narrow streets: markets, Hindu temples and districts such as Little India and Chinatown, which reflect the diversity of Malaysian culture. Kuala Lumpur is an ideal destination for explorers looking for a combination of modern architecture and cultural heritage. Take your time to soak up the atmosphere, as the ship will stay overnight.

Day 14 Port Kelang (Kuala Lumpur)/Malaysia

Please Note:

* The shore activities are not included in the cruise price and are in the planning stage. Subject to change.

The Small Cruise
Ship Collection

www.small-cruise-ships.com

01432 507 280 (within UK)

info@small-cruise-ships.com | small-cruise-ships.com

The Small Cruise Ship Collection

www.small-cruise-ships.com

small-cruise-ships.com

info@small-cruise-ships.com

YOUR SHIP: EUROPA

YOUR SHIP: Europa

VESSEL TYPE:

LENGTH:

PASSENGER CAPACITY:

BUILT/REFURBISHED:

Extensive space for a maximum of 400 guests A crew-to-guest ratio of almost one to one Outside suites only, most with a veranda Five restaurants for the ultimate in culinary indulgence - including THE GLOBE by three-star chef Kevin Fehling Top-class entertainment: experience international artists and experts live on board EUROPA Refresh: new fitness and wellness concepts for even more well-being MS EUROPA is an award-winning luxury cruise ship renowned for setting global standards in refined small-ship cruising. Accommodating a maximum of just 400 guests, the ship offers an intimate and highly personalised experience, supported by an almost one-to-one crew-to-guest ratio. Designed around the concept of casual luxury, EUROPA combines spacious surroundings, attentive service, and elegant all-suite accommodation, with all suites featuring ocean views and most offering private verandas. Onboard, guests can enjoy five exceptional restaurants, including fine dining concepts created in collaboration with acclaimed chefs, alongside world-class entertainment, wellness facilities, and thoughtfully curated enrichment experiences. The ship's smaller size allows access to unique itineraries and exclusive ports beyond the reach of larger vessels, while recent EUROPA Refresh

enhancements have introduced updated fitness and wellness concepts for an even more elevated onboard experience. Blending sophistication, comfort, and flexibility, MS EUROPA delivers a truly premium voyage to destinations



worldwide.

The Small Cruise Ship Collection

www.small-cruise-ships.com

01432 507 280 (within UK)

info@small-cruise-ships.com | small-cruise-ships.com

The Small Cruise Ship Collection

www.small-cruise-ships.com

small-cruise-ships.com

info@small-cruise-ships.com

INSIDE YOUR SHIP

Penthouse Deluxe Suite



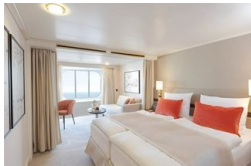
Penthouse Grand Suite



SPA Suite



Suite with panorama window



Veranda Suite Cat. 4-5

Veranda Suite Cat. 6-7



The Small Cruise
Ship Collection

www.small-cruise-ships.com

small-cruise-ships.com

info@small-cruise-ships.com

PRICING

08-Apr-2027 to 21-Apr-2027

Suite with panorama window	£4865 GBP pp
Veranda Suite Cat. 4-5	£6779 GBP pp
Veranda Suite Cat. 6-7	£8805 GBP pp
SPA Suite	£9505 GBP pp
Penthouse Deluxe Suite	£15155 GBP pp
Penthouse Grand Suite	£24029 GBP pp