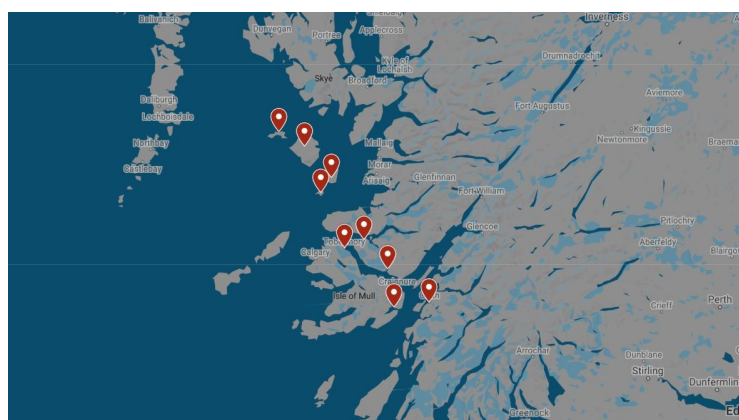




THE OUTER HEBRIDES WILDLIFE EXPLORER CRUISE: LEWIS AND HARRIS

This Outer Hebridean cruise (10 nights) wanders through the Northern Outer Hebrides on the outer edge of the Atlantic Ocean. We visit the remote and stunning isles of Lewis and Harris which, despite being usually referred to as two separate islands, are in fact connected. In this cruise we will discover Scottish island traditions, heritage and history such as standing stones, brochs, blackhouses and ancient churches. We will marvel at soft white sandy beaches with their shallow, turquoise waters, that are so much in contrast with the steep and ragged sea cliffs, and mysterious, deep sea lochs. The wildlife in these pristine and remote islands is rich and varied above and below the waves. We see basking sharks, minke whales, orcas, dolphins, otters, seals, red deer and both sea and golden eagles.



ITINERARY

Days 1 - 11 Cruising The Outer Hebrides

Some of the places we may visit are: Tobermory: One of the most picturesque towns in the Western Isles. If you wish, we can make time to visit the local whisky distillery or discover Mull's majestic eagles. Canna, the Small Isles: We can set sail for the scenic anchorage at Canna and its neighbouring Sanday. There are seabirds galore on the island's high sea cliffs - puffins, shags, razorbills, black guillemots, Manx shearwaters - and breeding there, in the high crags, are sea eagles. There are two lovely beaches, three churches, a tiny ruined castle and a population of less than 20! A short climb up Compass Hill gives wonderful views of the Isle of Skye and our destination, the islands of the Outer Hebrides. Lochmaddy: Situated on North Uist, Lochmaddy is the island's main village. The village was probably settled by the Norse and at one time was a base for seventeenth century pirates! Harris: We will anchor in East Loch Tarbert, an island-studded, wide sea loch. There is a possible



The Small Cruise Ship Collection

www.small-cruise-ships.com



small-cruise-ships.com

info@small-cruise-ships.com

anchorage off the scenic isle of Scalpay which joins Harris by a unique bridge. We can organise a visit to the spectacular white sandy beach of Luskentyre, voted one of the top five world's best beaches. We can then continue on to the fifteenth-century Church of Rodel and finish with a dramatic drive along the famous south-east coast road, known as the Golden Road due to the high cost of its construction! Lewis: We will travel further North and anchor near Stornoway which is the famous capital of the archipelago of Lewis and Harris. From here we can visit the 5,000 year old, world-famous, Callanish Standing Stones. We can also visit an Iron age house dating back to c. 600 AD which was only recently discovered after a storm. There are also the traditional Arnol Blackhouse and the well preserved Carloway Broch to visit. Loch Torridon: This loch takes us deep into the breath-taking mountain scenery of North West Scotland. Plockton: A most picturesque Scottish Highland village with a natural harbour and wonderful views of Loch Carron. This picture postcard village was famously part of the Hamish Macbeth TV series. Loch Nevis via east coast of Skye: Another spectacular sea loch that runs inland from the Sound of Sleat. Surrounded by mountains, it is one of the remotest sea lochs in Scotland. On the way we can plan to visit Torabhaig whisky Distillery or Armadale castle and gardens on the east coast of Skye. Loch Drumbaie: Just south of Oronsay is secluded Loch Drumbaie, situated between the island and the mainland. A squeeze between high sided cliffs and we are in a perfectly sheltered anchorage.

Please Note:

Please note that your voyage is weather dependent. Weather doesn't just mean good or bad weather. There are many considerations such as tidal gates, wind direction and strength,

the strength and direction of currents, overfalls, and fetch. Depending upon the weather and nature's conditions, wildlife viewing varies. If you wish to visit a specific place or have a specific experience, such as visiting standing stones or whisky tasting, then please do let your skipper know and he will endeavour to meet your request.



The Small Cruise Ship Collection

www.small-cruise-ships.com

01432 507 280 (within UK)

info@small-cruise-ships.com | small-cruise-ships.com



The Small Cruise Ship Collection

www.small-cruise-ships.com



small-cruise-ships.com

info@small-cruise-ships.com

YOUR SHIP: GEMINI EXPLORER

YOUR SHIP:

Gemini Explorer

VESSEL TYPE:

LENGTH:

PASSENGER CAPACITY:

BUILT/REFURBISHED:

Gemini Explorer, a mini cruise ship, is a historic, converted cruising lifeboat that once roamed the Western Approaches and was involved in the storm of the ill-fated 1979 Fastnet Race. Gemini Explorer was built in 1974 in Bideford Shipyard as the City of Bristol (70-003), one of three, Clyde class, cruising lifeboats (see Wikipedia) with an extended offshore range of 1700 miles. She is powered by two powerful Gardner diesel engines and she will achieve speeds of up to twelve knots. The Gemini Explorer entered service at the Clovelly Lifeboat Station on the North Devonshire coast and, after saving 44 lives, was finally retired in 1989. Since then, after extensive re-fits and modifications (including a new galley, high bulwarks, viewing top deck, en-suite accommodation and a well lit saloon), she has been converted to a mini cruise ship and today sails as the Gemini Explorer. However, there are parts of the insides of the vessel that have been kept in their original state to give an exciting insight in to role she once played as a cruising lifeboat. As a mini cruise ship she has voyaged as far away as Greenland and, for the last 10 years, sailed as a charter vessel on the east coast of Scotland. In 2020 after a further refit and upgrade she will be sailing the beautiful islands and sea lochs of Scotland's

west coast as part of St Hilda Sea Adventures little fleet. Accommodation The deck saloon is where everyone dines and socialises and where everyone enjoys a convivial atmosphere that is encouraged by shipboard life aboard this ex-cruising lifeboat. Cabins are warm and comfortable with eight berths for our guests. In the forward part of the vessel there is a double en-suite, a twin en-suite and single en-suite. In the aft part of the vessel there is a cabin which can sleep up to three guests (choice of one double bed and two single berths). This aft cabin shares the bathroom with the two crew. All en-suites and the bathroom have a washbasin, toilet and shower. All cabin linen and towels are supplied. There is an upper viewing deck complete with teak benches and perfect for spotting wildlife and relaxing. You also have some deck space to embark your own equipment such as kayaks and paddleboards. You will also be able to use the onboard two person



The Small Cruise Ship Collection

www.small-cruise-ships.com

01432 507 280 (within UK)

info@small-cruise-ships.com | small-cruise-ships.com



The Small Cruise Ship Collection

www.small-cruise-ships.com



small-cruise-ships.com

info@small-cruise-ships.com



sea kayak.



The Small Cruise Ship Collection

www.small-cruise-ships.com

01432 507 280 (within UK)

info@small-cruise-ships.com | small-cruise-ships.com



The Small Cruise Ship Collection

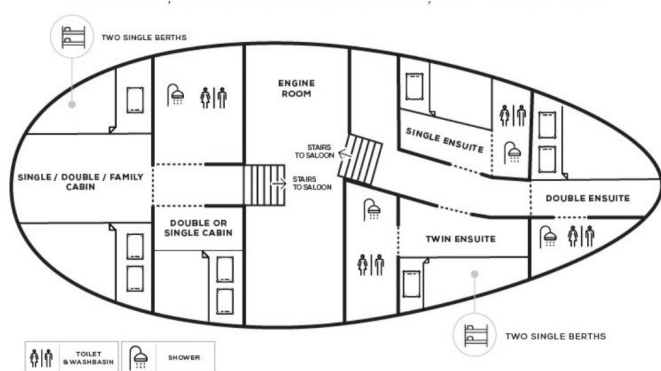
www.small-cruise-ships.com



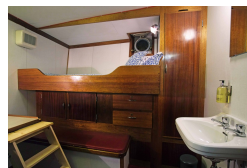
small-cruise-ships.com

info@small-cruise-ships.com

INSIDE YOUR SHIP



Double / Twin Cabin En-suite Single Cabin



Twin Cabin Semi En-suite



The Small Cruise Ship Collection

www.small-cruise-ships.com

01432 507 280 (within UK)

info@small-cruise-ships.com | small-cruise-ships.com



The Small Cruise Ship Collection

www.small-cruise-ships.com



small-cruise-ships.com

info@small-cruise-ships.com

PRICING

25-May-2026 to 04-Jun-2026

Double Cabin En-suite	£4100 GBP pp
Twin Cabin En-suite	£3700 GBP pp
Double Cabin adjacent En-suite	£3700 GBP pp

06-Aug-2026 to 16-Aug-2026

Twin / Double Cabin En-suite	£3900 GBP pp
Single Cabin En-suite	£3900 GBP pp
Single Cabin	£2600 GBP pp
Twin Cabin	£2850 GBP pp

19-May-2027 to 29-May-2027

Double / Twin Cabin En-suite	£4050 GBP pp
Single Cabin	£3500 GBP pp
Twin Cabin Semi En-suite	£3750 GBP pp

25-May-2027 to 04-Jun-2027

Twin Cabin En-suite	£3800 GBP pp
Double Cabin En-suite	£4050 GBP pp
Double Cabin adjacent En-suite	£3800 GBP pp

06-Aug-2027 to 16-Aug-2027

Single Cabin En-suite	£4050 GBP pp
Single Cabin	£2700 GBP pp
Twin Cabin	£2950 GBP pp
Twin / Double Cabin En-suite	£4050 GBP pp



The Small Cruise Ship Collection

www.small-cruise-ships.com

01432 507 280 (within UK)

info@small-cruise-ships.com | small-cruise-ships.com