

## The Small Cruise Ship Collection

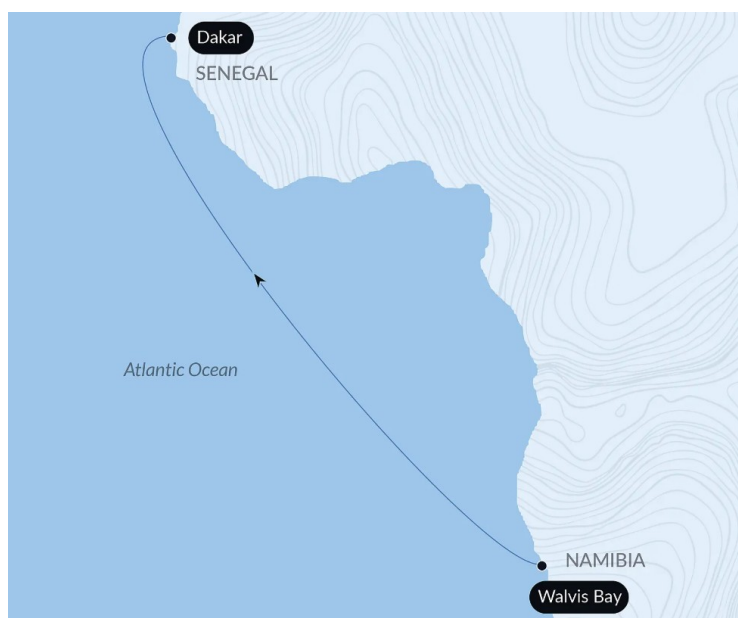
[www.small-cruise-ships.com](http://www.small-cruise-ships.com)

[small-cruise-ships.com](http://small-cruise-ships.com)

[info@small-cruise-ships.com](mailto:info@small-cruise-ships.com)

## OCEAN VOYAGE: FROM WALVIS BAY TO DAKAR IN LUXURY

From sea to sea, or from continent to continent, PONANT welcomes you aboard its ships for a Sea Journey. A few times a year we invite sea lovers, dreamers, and keen observers of endless horizons to join our non-stop journeys, to enjoy the comfort of our ships for an extended period and share the daily lives of our crew.



### ITINERARY

#### Day 1 - Walvis Bay

On the **wild coastlines of Namibia**, you will feel the force of the encounter between the infinite dunes of **the oldest desert in the world** and the tempestuous waves of the Atlantic Ocean. A natural port in the curve of a bay formed by an old river delta, **Walvis Bay** is protected from the whims of the ocean by the natural barrier of **Pelican Point**. It is a real refuge for migratory birds, where thousands of **pink flamingos** and Cape cormorants mix with one of the largest **Cape fur seal colonies** in the world. On the Namibian coastline, the seals make the most of the Benguela Current, cold and full of fish, which comes up from the Antarctic.

The Small Cruise Ship Collection  
[www.small-cruise-ships.com](http://www.small-cruise-ships.com)

01432 507 280 (within UK)

[info@small-cruise-ships.com](mailto:info@small-cruise-ships.com) | [small-cruise-ships.com](http://small-cruise-ships.com)



## The Small Cruise Ship Collection

[www.small-cruise-ships.com](http://www.small-cruise-ships.com)

[small-cruise-ships.com](http://small-cruise-ships.com)

[info@small-cruise-ships.com](mailto:info@small-cruise-ships.com)

### Days 2 - 12 At sea

During your journey at sea, make the most of the many services and activities on board. Treat yourself to a moment of relaxation in the spa or stay in shape in the fitness centre. Depending on the season, let yourself be tempted by the swimming pool or a spot of sunbathing. This journey without a port of call will also be an opportunity to enjoy the conferences or shows proposed on board, depending on the activities offered, or to do some shopping in the boutique or to meet the PONANT photographers in their dedicated space. As for lovers of the open sea, they will be able to visit the ship's upper deck to admire the spectacle of the waves and perhaps be lucky enough to observe marine species. A truly enchanted interlude, combining comfort, rest and entertainment.

### Day 13 - Dakar

During your journey at sea, make the most of the many services and activities on board. Treat yourself to a moment of relaxation in the spa or stay in shape in the fitness centre. Depending on the season, let yourself be tempted by the swimming pool or a spot of sunbathing. This journey without a port of call will also be an opportunity to enjoy the conferences or shows proposed on board, depending on the activities offered, or to do some shopping in the boutique or to meet the PONANT photographers in their dedicated space. As for lovers of the open sea, they will be able to visit the ship's upper deck to admire the spectacle of the waves and perhaps be lucky enough to observe marine species. A truly enchanted interlude, combining comfort, rest and entertainment.

### Please note:

Itineraries are subject to change.





## The Small Cruise Ship Collection

[www.small-cruise-ships.com](http://www.small-cruise-ships.com)

[small-cruise-ships.com](http://small-cruise-ships.com)

[info@small-cruise-ships.com](mailto:info@small-cruise-ships.com)

## YOUR SHIP: LE BOUGAINVILLE

**YOUR SHIP:**

**Le Bougainville**

**VESSEL TYPE:**

**LENGTH:**

**PASSENGER CAPACITY:**

**BUILT/REFURBISHED:**

Featuring innovative and environmentally-friendly equipment, elegantly designed cabins, spacious suites with large windows, and lounge areas that open onto the outside, this new limited-capacity yacht boasting just 92 cabins and suites will offer you a truly unique cruising experience. As the first ship in a new series that remains true to the Ponant spirit, Le Bougainville will embody the unique atmosphere that is the cruise line's hallmark: a subtle blend of refinement, intimacy and comfort. Aboard this ship that flies the French flag, you will experience the incomparable pleasure of an intimate cruise, with the possibility of exploring an ever-increasing range of destinations in an ethnic-chic ambiance with luxury service. Experience a luxurious setting where the accent is on authenticity and passion for travel. **RESTAURANTS** As it is an essential part of French culture, gastronomy will naturally have pride of place aboard this new ship. Through its two restaurants, Le Bougainville will invite you on a journey to elegance and epicureanism. In a relaxed atmosphere, a first dining area located on Deck 3 and able to seat 70 will serve grilled meats daily, along with a variety of salads and desserts. To the back of Deck 4, you will find a 260 m<sup>2</sup> panoramic restaurant which can accommodate all of

our passengers in a single sitting. Designed differently to that on our other ships, this dining area, which opens onto the outside, will have a buffet of salads, desserts and cheeses at your disposal. Our discreet and attentive crew will provide table service for hot meals. **PUBLIC AREAS** Like Le Boreal and its sisterships, Le Bougainville has many common areas that are designed and equipped to meet all of your needs while preserving the intimacy of each passenger. A 140 m<sup>2</sup> reception area includes: A reception/concierge desk, An excursions desk, The ship's administrative services, The sales office, manned by our Guest Relations Officer, Our 50 m<sup>2</sup> boutique which sells clothing, jewellery, beauty products, postcards and various accessories, Toilets accessible to passengers with reduced mobility. A new hydraulic platform with adjustable height provides: Easier boarding than on any other cruise ship, Easier Zodiac embarkation and disembarkation for expeditions, Easier access to the sea for swimming and practising various water sports such as kayaking or paddle-boarding. A pool deck offering: A pool with a panoramic view, equipped with a counter-current swimming system, A pleasant solarium, An outdoor bar and lounge with armchairs and sofas. A 200 m<sup>2</sup> main lounge which can accommodate all of our passengers to share convivial moments and to host activities organised during the day or evening. Lastly, a theatre that seats 188, equipped with: The latest sound and lighting technology, A LED wall as the stage backdrop, for the projection of high-resolution images and videos. Please click the following links to read more about Ponant and the other Ponant

The Small Cruise  
Ship Collection  
[www.small-cruise-ships.com](http://www.small-cruise-ships.com)

**01432 507 280** (within UK)

[info@small-cruise-ships.com](mailto:info@small-cruise-ships.com) | [small-cruise-ships.com](http://small-cruise-ships.com)



## The Small Cruise Ship Collection

[www.small-cruise-ships.com](http://www.small-cruise-ships.com)



[small-cruise-ships.com](http://small-cruise-ships.com)

[info@small-cruise-ships.com](mailto:info@small-cruise-ships.com)



cruise ships.



The Small Cruise  
Ship Collection

[www.small-cruise-ships.com](http://www.small-cruise-ships.com)

**01432 507 280** (within UK)

[info@small-cruise-ships.com](mailto:info@small-cruise-ships.com) | [small-cruise-ships.com](http://small-cruise-ships.com)



# The Small Cruise Ship Collection

www.small-cruise-ships.com

small-cruise-ships.com

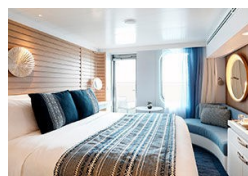
info@small-cruise-ships.com

## INSIDE YOUR SHIP

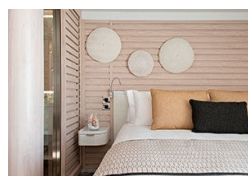


- Owner's Suite Deck 6
- Privilege Suites Deck 5-6
- Grand Deluxe Suites Deck 5-6
- Prestige Suites Deck 5-6
- Deluxe Suites Deck 5-6
- Prestige Cabins Deck 4-5-6
- Deluxe Cabins Deck 3

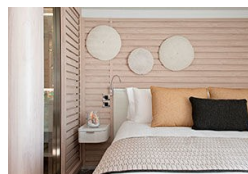
### Deluxe Stateroom



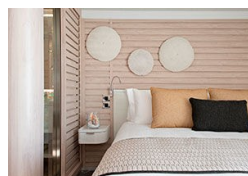
### Deluxe Suite Deck 3



### Deluxe Suite Deck 4



### Deluxe Suite Deck 5



### Deluxe Suite Deck 6

### Grand Deluxe Suite Deck 5

### Grand Deluxe Suite Deck 6

### Owner's Suite

### Prestige Deck 4

### Prestige Deck 5

### Prestige Deck 5 Suite

### Prestige Deck 6

### Prestige Deck 6 Suite

### Privilege Suite Deck 5

# The Small Cruise Ship Collection

www.small-cruise-ships.com

small-cruise-ships.com

info@small-cruise-ships.com

## PRICING

### 29-Mar-2026 to 10-Apr-2026

Prestige Deck 5 Suite	£4075 GBP pp
Deluxe Suite Deck 3	£3785 GBP pp
Deluxe Suite Deck 5	£3785 GBP pp
Privilege Suite Deck 6	£4305 GBP pp
Prestige Deck 4	£2665 GBP pp
Deluxe Stateroom	£2535 GBP pp
Privilege Suite Deck 5	£4305 GBP pp
Grand Deluxe Suite Deck 6	£4435 GBP pp
Deluxe Suite Deck 4	£3785 GBP pp
Prestige Deck 6	£2845 GBP pp
Prestige Deck 5	£2745 GBP pp
Deluxe Suite Deck 6	£3785 GBP pp
Prestige Deck 6 Suite	£4195 GBP pp
Grand Deluxe Suite Deck 5	£4435 GBP pp

### 31-May-2026 to 03-Jun-2026

Prestige Deck 6	£6335 GBP pp
Prestige Deck 5	£5990 GBP pp
Grand Deluxe Suite Deck 5	£14870 GBP pp
Prestige Deck 5 Suite	£11440 GBP pp
Owner's Suite	£14870 GBP pp
Deluxe Suite Deck 6	£10285 GBP pp
Deluxe Suite Deck 5	£10285 GBP pp
Prestige Deck 4	£5705 GBP pp
Deluxe Stateroom	£5415 GBP pp
Prestige Deck 6 Suite	£11720 GBP pp
Privilege Suite Deck 5	£12295 GBP pp
Grand Deluxe Suite Deck 6	£14870 GBP pp
Deluxe Suite Deck 3	£10285 GBP pp
Deluxe Suite Deck 4	£10285 GBP pp
Privilege Suite Deck 6	£12295 GBP pp





# The Small Cruise Ship Collection

[www.small-cruise-ships.com](http://www.small-cruise-ships.com)

[small-cruise-ships.com](http://small-cruise-ships.com)

[info@small-cruise-ships.com](mailto:info@small-cruise-ships.com)

## PRICING

03-Mar-2027 to 15-Mar-2027

Prestige Deck 6	£2905 GBP pp
Grand Deluxe Suite Deck 6	£4525 GBP pp
Deluxe Suite Deck 6	£3865 GBP pp
Privilege Suite Deck 5	£4385 GBP pp
Deluxe Stateroom	£2595 GBP pp
Prestige Deck 5	£2795 GBP pp
Grand Deluxe Suite Deck 5	£4525 GBP pp
Deluxe Suite Deck 4	£3865 GBP pp
Deluxe Suite Deck 3	£3865 GBP pp
Deluxe Suite Deck 5	£3865 GBP pp
Prestige Deck 6 Suite	£4285 GBP pp
Prestige Deck 5 Suite	£4155 GBP pp
Prestige Deck 4	£2725 GBP pp
Privilege Suite Deck 6	£4385 GBP pp