

The Small Cruise Ship Collection

www.small-cruise-ships.com

small-cruise-ships.com

info@small-cruise-ships.com

OCEAN VOYAGE: BUENOS AIRES TO LAS PALMAS DE GRAN CANARIA IN LUXURY

From sea to sea, or from continent to continent, PONANT welcomes you aboard its ships for a Sea Journey. A few times a year we invite sea lovers, dreamers, and keen observers of endless horizons to join our non-stop journeys, to enjoy the comfort of our ships for an extended period and share the daily lives of our crew. As the days go by, you can admire the waves from the upper deck, keep fit in the spa and make good use of the pool or the gym, share the daily life of the crew, discover sailing techniques and instruments, and enjoy a break from the hectic pace of life.



ITINERARY

Day 1 - Buenos Aires

A port city built on the south-western shore of the Rio de la Plata, between the Atlantic Ocean and the vast Argentine Pampas, Buenos Aires is a unique city in Latin America. Nicknamed "the Little Paris of South America", the Argentine capital is a clever blend of architecture with European influences and a joyful Latin American atmosphere. Designed on an orthogonal grid plan, it has 48 districts, all of which are as charming as they are different, with a range of styles such as Belle Époque, gothic and baroque. With its markets overflowing with treasures, its legendary cultural and architectural heritage, and tango providing its background music, the Argentine capital

The Small Cruise Ship Collection
www.small-cruise-ships.com

01432 507 280 (within UK)

info@small-cruise-ships.com | small-cruise-ships.com



The Small Cruise Ship Collection

www.small-cruise-ships.com

small-cruise-ships.com

info@small-cruise-ships.com

will delight you on every street corner.

Days 2 - 12 - At sea

During your journey at sea, make the most of the many services and activities on board. Treat yourself to a moment of relaxation in the spa or stay in shape in the fitness centre. Depending on the season, let yourself be tempted by the swimming pool or a spot of sunbathing. This journey without a port of call will also be an opportunity to enjoy the conferences or shows proposed on board, depending on the activities offered, or to do some shopping in the boutique or to meet the PONANT photographers in their dedicated space. As for lovers of the open sea, they will be able to visit the ship's upper deck to admire the spectacle of the waves and perhaps be lucky enough to observe marine species. A truly enchanted interlude, combining comfort, rest and entertainment.

Day 13 - Praia

The capital of Cape Verde, Praia, is located on the southern tip of Santiago island. You can dally in the districts planted with Tamarind and Albizia trees. Above the harbour, the statue of Diogo Gomes pays homage to the man who discovered Cape Verde in 1460. A few streets away, in the old centre, the Ethnographic Museum presents the diversity of the archipelago's cultural origins. Its historical building with transom windows is one of the city's more unusual curiosities.

Days 14 - 17 - At sea

During your journey at sea, make the most of the many services and activities on board. Treat yourself to a moment of relaxation in the spa or stay in shape in the fitness centre. Depending on the season, let yourself be tempted by the swimming pool or a spot of sunbathing. This journey without a port of call will also

be an opportunity to enjoy the conferences or shows proposed on board, depending on the activities offered, or to do some shopping in the boutique or to meet the PONANT photographers in their dedicated space. As for lovers of the open sea, they will be able to visit the ship's upper deck to admire the spectacle of the waves and perhaps be lucky enough to observe marine species. A truly enchanted interlude, combining comfort, rest and entertainment.

Day 18 - Las Palmas de Gran Canaria, Canary Islands

A stopover of sunny climes, Las Palmas is located on the north-east coast of Gran Canaria. A few streets away from Puerto de la Luz port, you'll discover the vast Las Canteras beach, bordered with the town's characteristic palms. You'll find these palms are all over Las Palmas, in the streets and squares, especially on the plaza de Santa Ana in the heart of the historical district. It feels like you've travelled back in time here, as you stand looking at the tall houses beside the Santa Ana cathedral. Very close by, you can visit the Casa de Colon, a museum dedicated to the famous explorer. The museum is housed in the palace belonging to the island's former governor. Chances are, you'll be drawn to the covered Vegueta market to partake in some daily life along with the locals and taste some unfamiliar dishes.

Please note:

Itineraries are subject to change.

The Small Cruise Ship Collection
www.small-cruise-ships.com

01432 507 280 (within UK)

info@small-cruise-ships.com | small-cruise-ships.com



The Small Cruise Ship Collection

www.small-cruise-ships.com

small-cruise-ships.com

info@small-cruise-ships.com

YOUR SHIP: LE BOREAL

YOUR SHIP:

Le Boreal

VESSEL TYPE:

**142 metres. Passenger Capacity:
264 (in twin cabins, just 200 in
Antarctica). Built: 2011**

LENGTH:

PASSENGER CAPACITY:

BUILT/REFURBISHED:

Luxury Expedition / Cruise Ship A superb mega-yacht with 132 cabins, she is the fruit of the expertise of the Italian Fincantieri shipyard and French sophistication, as interpreted by designer Jean-Philippe Nuel. Le Boreal creates a unique atmosphere, a subtle blend of luxury, intimacy and well-being. The best materials, discreet elegance and a tasteful decor combined with exterior and interior lines to reflect a nautical mood. On board, soothing neutral tones are enlivened by splashes of red, our signature theme linking tradition and innovation to create personal touches in the spirit of a "private yacht". Cuisine Loyal to the great French tradition, the haute cuisine on board is worthy of the finest restaurants, where discreet, attentive service is the hallmark. Choose from two restaurants for breakfast, lunch and dinner. The Gastronomic Restaurant is situated on Le Liberte Deck and serves you French and international cuisine accompanied by fine wine. In the Grill Restaurant, you have the opportunity to eat outside and enjoy buffet lunch and themed dinner. Life On Board Whether you want to join other guests in the theatre or games area (Wii™ consoles, etc), or relax on your

own in a quiet corner of the library, Le Boreal has been designed to meet the needs of every guest. Everything has been done to preserve the independence of each guest to suit their personal tastes: lounges for lectures and shows, a spa in partnership with Carita™, but also more intimate spaces such as the library and internet corner. Comfortable cabins, nearly all with private balcony, are available for families either as triples or as communicating cabins. There is also a games area with Wii™ consoles, children's menus, and a baby-sitting service. Just as if you were on a private yacht, your time is your own to do as you please. Fitted with the latest equipment (Kinesis Wall, running machine) and in partnership with the famous Carita™ brand, the Beauty Centre on Le Boreal welcomes you for some relaxation and pampering (beauty treatments, hairdresser, hammam, balneotherapy). Wheelchairs 3 specially adapted wheelchair cabins (Deck 3 = Superior cabin no. 307, no balcony, Deck 4 = Prestige Cabin no. 407 - with balcony and Deck 5 = Prestige Cabin no 509, with balcony) and lifts to all decks/areas. Please click the following links to read more about Ponant and the other Ponant

The Small Cruise
Ship Collection
www.small-cruise-ships.com

01432 507 280 (within UK)

info@small-cruise-ships.com | small-cruise-ships.com



The Small Cruise Ship Collection

www.small-cruise-ships.com



small-cruise-ships.com

info@small-cruise-ships.com



cruise ships.



The Small Cruise
Ship Collection

www.small-cruise-ships.com

01432 507 280 (within UK)

info@small-cruise-ships.com | small-cruise-ships.com

The Small Cruise Ship Collection

www.small-cruise-ships.com

small-cruise-ships.com

info@small-cruise-ships.com

INSIDE YOUR SHIP

Deck plans - Le Boréal, L'Austral, Le Soléal & Le Lyrial



DECK 7
Open air bar - Sun deck

DECK 6:
La Boréal, L'Austral, Le Soléal: Owner's Suite - 3 Deluxe Suites with private balcony - 20 Prestige staterooms with private balcony (with 18 Prestige staterooms convertible into 9 Prestige suites)
Le Lyrial: Owner's Suite - 1 Grand Privilege Suite - 3 Deluxe Suites with private balcony - 3 Grand Deluxe Suite - 8 Privilege Suites - 1 Prestige stateroom - Pool - Grill Restaurant - Internet space - Library - Panoramic Lounge - Panoramic terrace

DECK 5:
27 Prestige staterooms with private balcony with 22 Prestige staterooms convertible into 11 Prestige suites - Fitness - PONANT yacht spa (hot tubs, hammam, massage, hydrotherapy) - Relaxation room - Image & photo desk - Bridge

DECK 4:
26 Prestige Staterooms with private balcony - Theater

DECK 3:
28 Deluxe Staterooms with private balcony - 8 Superior Staterooms - Main lounge - Shop - Reception Desk - Excursion Desk - Medical center

DECK 2:
Gastronomic Restaurant - Marina

Owner's Suite
Deck 6

Grand Privilege Suite
Deck 6 - Le Lyrial

Grand Privilege Suite
Deck 6 - Le Lyrial

Prestige Suites
Port 6 - 5 except Le Lyrial

Grand Deluxe Suites
Deck 6 - Le Lyrial

Deluxe Suites
Deck 6

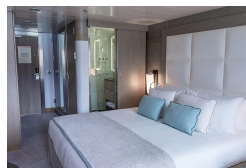
Prestige Staterooms
Deck 4 - 5 - 6

Deluxe Staterooms
Deck 3

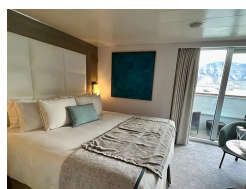
Superior Staterooms
Deck 3

PONANT

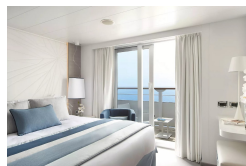
Deluxe Stateroom



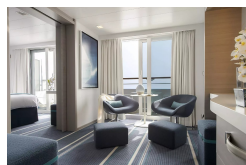
Deluxe Suite



Grand Deluxe Suite



Grand Privilege Suite



Prestige Deck 4

Prestige Deck 5

Prestige Deck 5 Suite

Prestige Deck 6

Prestige Deck 6 Suite

Privilège Suite

The Small Cruise Ship Collection
www.small-cruise-ships.com

01432 507 280 (within UK)

info@small-cruise-ships.com | small-cruise-ships.com



The Small Cruise Ship Collection

www.small-cruise-ships.com

small-cruise-ships.com

info@small-cruise-ships.com

PRICING

22-Mar-2027 to 08-Apr-2027

| | |
|-----------------------|--------------|
| Deluxe Suite | £5465 GBP pp |
| Superior Stateroom | £3405 GBP pp |
| Prestige Deck 6 Suite | £6065 GBP pp |
| Prestige Deck 4 | £3845 GBP pp |
| Prestige Deck 6 | £4105 GBP pp |
| Prestige Deck 5 Suite | £5875 GBP pp |
| Deluxe Stateroom | £3665 GBP pp |
| Prestige Deck 5 | £3955 GBP pp |

28-Mar-2027 to 14-Apr-2027

| | |
|-----------------------|--------------|
| Prestige Deck 5 Suite | £5875 GBP pp |
| Prestige Deck 4 | £3845 GBP pp |
| Deluxe Stateroom | £3665 GBP pp |
| Grand Privilege Suite | £7135 GBP pp |
| Prestige Deck 6 | £4105 GBP pp |
| Superior Stateroom | £3405 GBP pp |
| Privilège Suite | £6065 GBP pp |
| Prestige Deck 5 | £3955 GBP pp |
| Grand Deluxe Suite | £6355 GBP pp |
| Deluxe Suite | £5465 GBP pp |