

The Small Cruise Ship Collection

www.small-cruise-ships.com



small-cruise-ships.com

info@small-cruise-ships.com

NORWEGIAN FJORDS CRUISE: A WONDER TO BE DISCOVERED

Embark on a grand voyage from urban elegance to the heart of nature's masterpiece. Our cruise, "Norwegian Fjords: A Wonder to be Discovered," charts a course from the charming canals of Amsterdam to the dramatic landscapes of the Arctic Circle. This journey reveals the sublime beauty of the Norwegian coast, from the historic Hardangerfjord to the UNESCO-listed Geirangerfjord and the captivating Lofoten islands. As you sail, each day reveals breathtaking new vistas: the colossal Svartisen Glacier, thunderous Seven Sisters waterfalls cascading into Geirangerfjord, and soaring eagles navigating the impossibly narrow Trollfjorden. Beyond natural spectacles, discover rich Viking heritage in Trondheim and Norway's oldest church in charming Rosendal village. Experience the Arctic's raw power and ethereal beauty from the surreal Midnight Sun illuminating northern skies to intimate wildlife encounters. Join kayaking expeditions, absorb expert lectures and hone photography skills while fellow travellers share stories on leisurely sea days. From panoramic observation decks, witness a region steeped in polar exploration history. This is more than a cruise - it's a journey where every fjord, glacier and ancient town reveals stories waiting to be discovered.



ITINERARY

Day 1 Amsterdam (Netherlands)

Amsterdam is a gorgeous Dutch city where a boat cruise along the canals gets to the heart of things. Yet, the magic also unfolds while strolling through narrow streets and crossing the hundreds of bridges. It houses a treasure trove of fabulous art museums, including the Rijksmuseum, adorned with Dutch Masters, conveniently located near the Van Gogh Museum. To the south, picturesque stretches of countryside with windmills line the canals.

The Small Cruise Ship Collection
www.small-cruise-ships.com

01432 507 280 (within UK)

info@small-cruise-ships.com | small-cruise-ships.com



The Small Cruise Ship Collection

www.small-cruise-ships.com

small-cruise-ships.com

info@small-cruise-ships.com

Day 2 Day at sea (At Sea)

Day 3 Rosendal (Norway)

Day 4 Nordfjordeid (Norway)

The Eidsfjorden village of Nordfjordeid has a craftsman-built replica of Myklebust, Norway's largest known Viking ship. The surroundings boast rich Viking burial mounds. Nordfjordeid is also the gateway to Briksdalsbreen Glacier, an accessible arm of the expansive Jostedalbreen glacier. At the end of Innvikfjorden, the Loen Skylift gondola ascends 1,011 metres, offering breathtaking views.

Day 5 Geiranger (Norway)

Geiranger is a small village at the head of Geirangerfjord, a UNESCO heritage site for its staggering mix of snow-capped peaks, clear blue waters, lush greenery, and magnificent waterfalls. The mighty Seven Sisters are a series of seven waterfalls cascading down a steep cliff face. The 1,500 m Geiranger Skywalk at Dalsnibba offers panoramic vistas. In Geiranger, the Norwegian Fjord Centre is the visitor and education hub of the fjord region.

Day 6 Trondheim (Norway)

Tucked away amongst the hills of Trondheim fjord, Trondheim is a Viking city founded in the 11th century that is filled with colourful timber buildings. Nidaros Cathedral is the burial site of Viking king St Olav (c. 995 - 29 July 1030). The mighty 17th-century Kristiansten Fortress is the country's best preserved fortification. Stiftsgarden, the Norwegian royal residence, is believed to be one of the largest wooden buildings in northern Europe.

Day 7 Svartisen, Svartisen Glacier (Norway)

The mighty Svartisen glacier, Norway's second biggest, pours down the mountain almost to Svartivatnet lake. The glacier visitor centre is a fascinating place with access to hikes along the edge of the ice flow, up to 200 m thick. Glorious Holandsfjord is just the other end of a short channel from the lake and the ship has stirring views. The little village of Holandsvika sits across the fjord, with an 18-km lakeside path and boat trips.

Day 8 Leknes, Lofoten (Norway)

In the Lofoten Islands, Leknes, the main town on Vestvagøya island above the Arctic Circle, is nestled on the bay-like Buksnesfjorden. The surreal landscape features red-painted houses against craggy, mountainous isles. In summer, the white sand beaches resemble the South Seas, while the region experiences almost two months of the Midnight Sun.

Day 8 Cruising Trollfjorden (Norway)

Trollfjorden is unbelievable. A 100m-wide entrance to a narrow fjord with near-vertical mountainous sides up to 1,100 m high, the passage slices through Austvagøya, on the edge of the Lofoten Islands. As the ship enters the fjord, the silence is only broken by the gentle sound of the ship's engines and the occasional cry of a white-tailed eagle soaring overhead. At the end of the fjord, the ship slowly spins, offering a final captivating view.

Day 9 Tromsø (Norway)

The Arctic gateway, Tromsø at 69 degrees north, is renowned for the midnight sun in summer and the Northern Lights in winter. The Arctic Cathedral, with stained-glass windows, hosts midnight concerts. The Fjellheisen cable car offers panoramic views from Mount Storsteinen, while the historic centre features old wooden

The Small Cruise Ship Collection
www.small-cruise-ships.com

01432 507 280 (within UK)

info@small-cruise-ships.com | small-cruise-ships.com



The Small Cruise Ship Collection

www.small-cruise-ships.com



small-cruise-ships.com

info@small-cruise-ships.com

houses. The Polar Museum chronicles early polar explorations, and the thriving Alpine Botanic Garden adds to Tromsø's charm.

Please note:

Itineraries are subject to change.



The Small Cruise Ship Collection

www.small-cruise-ships.com

01432 507 280 (within UK)

info@small-cruise-ships.com | small-cruise-ships.com

The Small Cruise Ship Collection

www.small-cruise-ships.com



small-cruise-ships.com

info@small-cruise-ships.com

YOUR SHIP: DIANA

YOUR SHIP: Diana

VESSEL TYPE:

LENGTH:

PASSENGER CAPACITY:

BUILT/REFURBISHED:

Launched in 2023, SH Diana provides elegant and spacious 5-star accommodation for 192 guests in 96 spacious staterooms and suites, the vast majority with large balconies. Operated by an onboard team of 140 she provides a high level of personal service, exploring the Mediterranean and its famous sites of antiquity. Now sit back, relax and take a moment to get to know this amazing new ship, purpose-designed for our unique cultural expedition cruises. Named after the Ancient Roman goddess of light, the moon, hunting and the wilderness, SH Diana been specially designed for worldwide cruising to explore the most inspiring and inaccessible places on earth. Building on the outstanding amenities of her sister ships, she adds a dedicated Multifunctional Room next to the Observation Lounge, a Private Dining Room for special occasions, and two tenders which bring guests a comfortable alternative to Zodiacs for expedition landings. A Polar Class 6 ice-strengthened hull combines with extra-large stabilisers to make your journey as comfortable as possible. SH Diana has been designed for immersive experiences, with extensive outside deck areas, multiple observation points and bright, open and relaxing public spaces with unobstructed views. The pleasure and safety of our

guests is paramount at all times, cared for by our attentive crew and seasoned expedition leaders. Cutting edge hygiene technology protects the health of all on board to the highest standards and includes air conditioning with UV sanitisation systems. SH Diana's 96 staterooms, including 11 suites, are each a superbly comfortable home from home and all feature panoramic sea views, a flame-effect fireplace, original works of art, plush couches, premium pocket sprung mattresses, en-suite bathrooms with glass-enclosed rain showers, and Egyptian cotton towels, bathrobes and sheets. A pillow menu offers customised head and neck comfort during rest, while a large flat screen TV, espresso machine with Illy premium coffee, tea making facilities with the finest Kusmi teas, and a minibar with refreshments enhance relaxation at any time. In-room dining is of course available at all hours. Wheelchair access Guests who use wheelchairs must bring their own, as we have only a small number of wheelchairs stored onboard for emergencies. To ensure ease of movement on the ship, wheelchairs and mobility aids must be no wider than 65cm. All mobility or medical equipment brought on board must be capable of being carried safely and must be declared before sailing. To ensure that all guests can safely evacuate during an emergency, guests requiring a wheelchair can only be accommodated in our ADA-accessible cabins. We offer an Oceanview and a Balcony stateroom on Diana. These staterooms are specifically designed to be completely ADA compliant and have a fully operable wheelchair-access wet unit. Diana has two lifts, serving every passenger deck apart from the Stargazing top deck, which is, therefore, more difficult to access, as are the Aft Marina and

The Small Cruise Ship Collection
www.small-cruise-ships.com

01432 507 280 (within UK)

info@small-cruise-ships.com | small-cruise-ships.com



The Small Cruise Ship Collection

www.small-cruise-ships.com

small-cruise-ships.com

info@small-cruise-ships.com

Swan's Nest forward observation platform. Also, we don't have special equipment to access the swimming pool, jacuzzi, or sauna. Otherwise, the ship is entirely at your disposal. Many of the expeditions ashore in remote places are by Zodiac. Boarding these boats and returning aboard can present challenges for wheelchair users, as can navigating uneven terrain. These challenges are by no means always insurmountable, though, and our highly experienced crew is trained to provide reliable advice and assistance. They will make every effort to ensure wheelchair-using guests enjoy a memorable experience at each destination. Our general guidance, however, is to recommend wheelchair users travel with a companion for their ease and enjoyment. If you prefer to remain aboard, our panoramic interiors and ample open decks ensure an immersive, intimate experience of your inspiring



surroundings.

The Small Cruise Ship Collection

www.small-cruise-ships.com

01432 507 280 (within UK)

info@small-cruise-ships.com | small-cruise-ships.com



The Small Cruise Ship Collection

www.small-cruise-ships.com



small-cruise-ships.com

info@small-cruise-ships.com

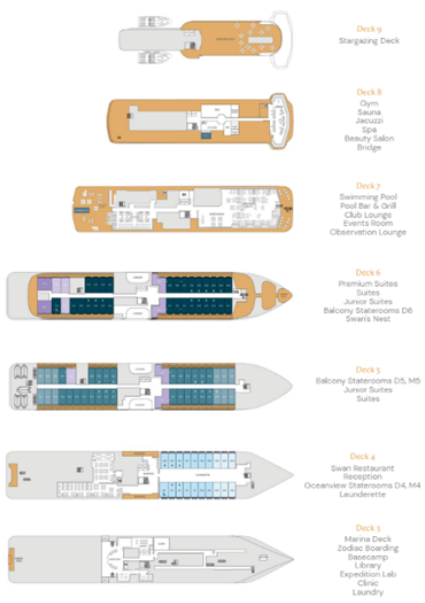
INSIDE YOUR SHIP

Stateroom Category:

- Oceanview D4: 6 (88m²)
- Oceanview M4: 14 (88m²)
- Balcony D5: 12 (88m²)
- Balcony M5: 25 (88m²)
- Balcony D6: 28 (88m²)
- Junior Suite: 4 (240m²)
- Suite: 4 (240m²)
- Premium Suite: 2 (240m²)

Ship Specification:

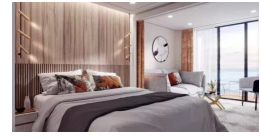
- Guest Capacity: 209
- Crew: 101
- No. of Decks: 8
- Staterooms: 98
- Length: 402.7m (1243ft)
- Beam: 79.9m (243ft)
- Gross Tonnage: 12,225
- Service Speed: 12.5 knots
- 1st Guest Capacity: ∞
- Connecting: ---
- Staterooms: 4, 491, 635
- Wheelchair Accessible: 5
- Staterooms: 4, 491, 635
- Propulsion: Hybrid Diesel
- Electric Power: Class P16
- Parade Deck: ---
- Registered: 2 (fully closed)
- Foodbeats: 14 M&S
- Tenders: 2



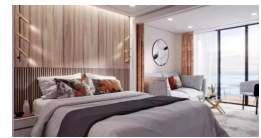
Balcony D5



Balcony D6



Balcony M5



Junior Suite



Oceanview D4



Oceanview M4



Premium Suite

Suite



The Small Cruise Ship Collection

www.small-cruise-ships.com



small-cruise-ships.com

info@small-cruise-ships.com

PRICING

08-Jun-2027 to 16-Jun-2027

Premium Suite	£9825 GBP pp
Suite	£8605 GBP pp
Junior Suite	£7375 GBP pp
Balcony D6	£5905 GBP pp
Balcony M5	£5655 GBP pp
Balcony D5	£5405 GBP pp
Oceanview D4	£4915 GBP pp
Oceanview M4	£5165 GBP pp



The Small Cruise Ship Collection

www.small-cruise-ships.com

01432 507 280 (within UK)

info@small-cruise-ships.com | small-cruise-ships.com