



The Small Cruise Ship Collection

www.small-cruise-ships.com



small-cruise-ships.com

info@small-cruise-ships.com

NORWAY'S NATURAL BEAUTY SMALL SHIP CRUISE

Whether you are admiring deep-blue fjords, exploring the unspoilt Lofoten Islands up close or letting your gaze wander from the dream destination of North Cape - travel dreams come true in the far north when you experience the natural wonders of Norway from fascinating perspectives.



ITINERARY

Day 1 Individual travel arrangements to cruise departure point Travemünde/Germany, departure 18.00 hrs

Travemünde has a fascinating history as a traditional seaport. Today, it attracts visitors with its charming Baltic Sea flair. It's an ideal starting point for boat trips, walks along the beach and discovering nearby Lubeck. Travemünde is located about 70 km (43 mi.) from Hamburg and 280 km (174 mi.) from Berlin.

Day 2 Relaxation at sea



01432 507 280 (within UK)

info@small-cruise-ships.com | small-cruise-ships.com



The Small Cruise Ship Collection

www.small-cruise-ships.com

small-cruise-ships.com

info@small-cruise-ships.com

Day 3 Sandnes/Norway, 08.00 – 13.00 hrs

From impressive fjords, such as the Lysefjord with its steep cliffs, to idyllic sandy beaches along the coast - there is plenty for nature lovers to explore here. Hike to the famous Preikestolen or Pulpit Rock, an impressive rock formation with spectacular views, or explore the Lysefjord by excursion boat or speedy RIB. You can explore the charming old town of Stavanger on foot, by Nordic Walking or by Segway - Stavanger is a real treasure trove of possibilities.

Day 4 Olden/Faleidfjord/Norway, 12.00 – 18.00 hrs

With its stunning scenery of towering mountains, glacial lakes and deep valleys, Olden enchants and delights nature lovers and adventurers alike. The picturesque village lies at the foot of the mighty Jostedalsglacier, the largest mainland glacier in Europe, and is the gateway to further beautiful natural locations. The Briksdalsbreen is particularly spectacular, with its shimmering silver ice masses stretching far down into the valley. Here you can hear the crunching sound of the ice and marvel at the breathtaking blue ice caves. Whether on a hike, a boat trip or simply relaxing in the tranquil surroundings, Olden offers truly unforgettable experiences.

Day 5 Molde/Moldefjord/Norway, 08.00 – 24.00 hrs

Molde, on Romdalsfjord, is also known as the "City of Roses" because of its many rose gardens. A walk through the old town will take you past colourful facades, the cathedral and to the Romsdal museum, which offers interesting insights into the history of the region. At the Varden viewpoint, visitors can enjoy the breathtaking panoramic views of the 222 surrounding peaks, most of which are higher than 1,000 m (3,280 ft), making Molde a popular destination for hikers.

Day 6 Relaxation at sea

Day 7 Leknes/Lofoten Islands/Norway, 07.00 – 14.00 hrs

Majestic mountains, deep-blue fjords, green valleys and idyllic beaches - the Lofoten Islands are a unique scenic location in the north of Norway. The 80 or so islands north of the Arctic Circle stretch for over a hundred miles along the west coast and are a paradise for adventure seekers and hikers. Leknes lies in the heart of the archipelago. Here you can enjoy the view and some regional specialities in the cosy cafes and restaurants or look for hand-made souvenirs in the little shops.

Day 8 Honningsvåg/Norway, arrival 19.00 hrs

In the north of Norway on the island of Mageroya lies Honningsvåg, the ideal gateway to the legendary North Cape. With a population of around 2,300, Honningsvåg is the administrative centre of the Nordkapp municipality and is known for its fishing industry and tourism. The town was rebuilt after the Second World War and is now a mix of tradition and modernity. Around 30 km (19 mi.) away, the globe monument at the North Cape is the symbol of the northernmost point of the European continent. Impressive slate cliffs reach far out into the Arctic Ocean, forming a spectacular backdrop especially in late summer, when the sun stays over the horizon for two and a half months. Honningsvåg is a meeting point between the raw Nordic climate and the forces of nature.

Day 9 Honningsvåg, departure 01.00 hrs

Day 10 Bodo/Norway, 07.00 – 13.00 hrs

Nestled between dramatic mountains and the Arctic Ocean, Bodø fascinates with its unspoilt nature and Nordic charm. The town, north of the Arctic Circle, is known for the spectacular

The Small Cruise Ship Collection
www.small-cruise-ships.com

01432 507 280 (within UK)

info@small-cruise-ships.com | small-cruise-ships.com



The Small Cruise Ship Collection

www.small-cruise-ships.com

small-cruise-ships.com

info@small-cruise-ships.com

Northern Lights in winter and the midnight sun in summer. A highlight is the Saltstraumen, the strongest tidal stream in the world, where masses of water spin in wild whirlpools. The modern city centre combines culture, culinary delights and maritime flair, while the Aviation Museum offers insights into the history of the Norwegian Air Force. Bodø is a gateway to the Arctic - rugged, beautiful and full of adventure.

Day 11 Trondheim/Norway, 09.00 - 18.00 hrs

Trondheim, with its idyllic location on a peninsula in the Trondheimsfjord, combines over 1,000 years of history with modern urban life. In the centre of the city is the Torget market place, surrounded by historic streets and the Art Museum. A particularly impressive landmark of the city is Nidaros Cathedral, one of the largest Gothic buildings in Scandinavia and once the burial site of kings. North of the market place is the Stiftsgården, a magnificent 18th-century wooden palace, which is now used as a royal residence. A walk over the old town bridge, also known as the "Portal of Happiness" due to its decorative red portals, leads visitors into the Baklandet district with its little cafes and colourful wooden houses.

Day 12 Alesund/Norway, 07.00 - 13.00 hrs

The roots of the Norwegian coastal town of Alesund date back to the 15th century - an impressive combination of history and new beginnings. After the devastating fire of 1904, the town was rebuilt in the splendid art nouveau style and still enchants visitors today with its ornately decorated facades. A scenic bridge connects the two main islands and characterises the idyllic townscape. The modern church stands in the centre, its colourful stained glass shimmering in the sunlight, while the nearby aquarium provides insights into the underwater world of the North Sea. The town museum in a historic patrician house

invites visitors to further discover the splendid art nouveau architecture and traditions of old craftsmanship.

Day 13 Eidfjord/Norway, 09.00 - 15.00 hrs

The majestic Eidfjord, surrounded by mountains that rise up to 1,800 m (5,906 ft) into the sky, offers unforgettable nature experiences. At the Hardangervidda Nature Centre, visitors can gain an initial insight into the geology, flora and fauna of the region before going out and experiencing the spectacular landscape for themselves. Whether gliding over the crystal-clear water in a kayak or hiking to thundering waterfalls such as Voringfossen - the beauty of nature is omnipresent. For hiking enthusiasts, Hardangervidda offers numerous trails through dense forests, past unspoilt lakes and up to barren heights.

Day 14 Relaxation at sea

Day 15 Hamburg/Germany, arrival 07.00 hrs Individual travel arrangements from cruise arrival point

The Free and Hanseatic City of Hamburg, with around 1.9 million inhabitants, is the second-largest city in Germany and one of Europe's most important metropolises. Its history goes a long way back: Hamburg joined the Hanseatic League as early as 1241 and developed into an important centre of industry and trade. Today, it is known for having the third-largest port in Europe, for its role as a media centre and for its rich cultural scene. Highlights include the city centre with the Binnenalster lake, the port of Hamburg, the spectacular Elbphilharmonie concert hall, the lively St. Pauli district and the Michel, the striking main church of St. Michaelis. Hamburg combines historic charm with modern city life and is a place full of spirit and diversity.

The Small Cruise Ship Collection

www.small-cruise-ships.com

01432 507 280 (within UK)

info@small-cruise-ships.com | small-cruise-ships.com



The Small Cruise Ship Collection

www.small-cruise-ships.com



small-cruise-ships.com

info@small-cruise-ships.com

Please note:

Itineraries are subject to change.



The Small Cruise Ship Collection

www.small-cruise-ships.com

01432 507 280 (within UK)

info@small-cruise-ships.com | small-cruise-ships.com



The Small Cruise Ship Collection

www.small-cruise-ships.com



small-cruise-ships.com

info@small-cruise-ships.com

YOUR SHIP: EUROPA

YOUR SHIP: Europa

VESSEL TYPE:

LENGTH:

PASSENGER CAPACITY:

BUILT/REFURBISHED:

Extensive space for a maximum of 400 guests A crew-to-guest ratio of almost one to one Outside suites only, most with a veranda Five restaurants for the ultimate in culinary indulgence - including THE GLOBE by three-star chef Kevin Fehling Top-class entertainment: experience international artists and experts live on board EUROPA Refresh: new fitness and wellness concepts for even more well-being MS EUROPA is an award-winning luxury cruise ship renowned for setting global standards in refined small-ship cruising. Accommodating a maximum of just 400 guests, the ship offers an intimate and highly personalised experience, supported by an almost one-to-one crew-to-guest ratio. Designed around the concept of casual luxury, EUROPA combines spacious surroundings, attentive service, and elegant all-suite accommodation, with all suites featuring ocean views and most offering private verandas. Onboard, guests can enjoy five exceptional restaurants, including fine dining concepts created in collaboration with acclaimed chefs, alongside world-class entertainment, wellness facilities, and thoughtfully curated enrichment experiences. The ship's smaller size allows access to unique itineraries and exclusive ports beyond the reach of larger vessels, while recent EUROPA Refresh

enhancements have introduced updated fitness and wellness concepts for an even more elevated onboard experience. Blending sophistication, comfort, and flexibility, MS EUROPA delivers a truly premium voyage to destinations



worldwide.

The Small Cruise Ship Collection
www.small-cruise-ships.com

01432 507 280 (within UK)

info@small-cruise-ships.com | small-cruise-ships.com



The Small Cruise Ship Collection

www.small-cruise-ships.com



small-cruise-ships.com

info@small-cruise-ships.com

INSIDE YOUR SHIP

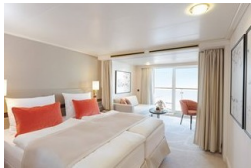
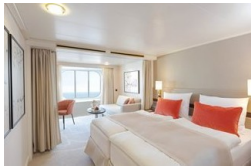
Penthouse Deluxe Suite

SPA Suite



Suite with panorama window

Veranda Suite Cat. 4-5





The Small Cruise Ship Collection

www.small-cruise-ships.com



small-cruise-ships.com

info@small-cruise-ships.com

PRICING

30-Jul-2027 to 13-Aug-2027

Suite with panorama window	£6429 GBP pp
Veranda Suite Cat. 4-5	£7499 GBP pp
Veranda Suite Cat. 6-7	£9259 GBP pp
SPA Suite	£10025 GBP pp
Penthouse Deluxe Suite	£15679 GBP pp



The Small Cruise Ship Collection

www.small-cruise-ships.com

01432 507 280 (within UK)

info@small-cruise-ships.com | small-cruise-ships.com