



## The Small Cruise Ship Collection

[www.small-cruise-ships.com](http://www.small-cruise-ships.com)

[small-cruise-ships.com](http://small-cruise-ships.com)

[info@small-cruise-ships.com](mailto:info@small-cruise-ships.com)

## NORTHEAST GREENLAND'S UNEXPLORED SEA ICE

Le Commandant Charcot invites you to explore the North East of Greenland, an isolated and pristine territory in the heart of the Arctic ice. Explore Blosseville Coast, where the ice floe crystallises to form sharp peaks, as well as the region of Ittoqqortoormiit, at the entrance to Scoresby Sound, the world's largest network of fjords, where colourful villages stand out against the surrounding whiteness. Sail among blue-tinged icebergs, and explore majestic glaciers and fjords on board your ship, in a kayak, in a Zodiac dinghy or by foot. You will perhaps come across the silhouette of a polar bear or the grace of a blue whale. This unforgettable adventure will reveal the unspoiled beauty of the Arctic, between grandiose landscapes and authentic encounters.



### ITINERARY

Day 1 Reykjavik

Iceland's capital stretches along the edge of a vast bay in the west of the country. Perlan, the "Pearl of Reykjavik", a museum located on 'Oskjuhlíð hill, offers a panoramic view of the lush, green landscapes. A little further, one can easily spot the signpost showing the way to the evangelical Hallgrímskirkja church, and to the historical centre where one can stroll along the Skólavörðustígur and the Laugavegur, two lively streets with charming small shops. For some relaxation just outside of the city, visitors have the opportunity to visit the Reykjanes



peninsula and its famous thermal lagoons of the Blue Lagoon.

#### Day 2 At sea aboard Le Commandant Charcot

Spend exceptional moments sailing aboard Le Commandant Charcot, the world's first luxury polar exploration vessel and the first PC2-class polar cruise ship capable of sailing into the very heart of the ice, on seas and oceans which the frozen conditions render inaccessible to ordinary ships. Le Commandant Charcot is fitted with oceanographic and scientific equipment selected by a committee of experts. Take advantage of the on-board lectures and opportunities for discussion with these specialists to learn more about the poles. Participate in furthering scientific research with PONANT and let us discover together what these fascinating destinations have yet to reveal to us.

#### Day 3 Exploring the Blosseville Coast

Aboard your ship, follow in the footsteps of Jules Poret de Blosseville, a French explorer and sailor. In 1833, he set off to discover this isolated and unexplored part of eastern Greenland aboard La Lilloise, an adventure with a fatal outcome. The uninhabited territory that bears his name lies to the south of Scoresby Sound. Surrounded by ice, icebergs and pack ice - thin or thick, flat or pronounced - as far as the eye can see, Blosseville Coast is a wild and distant place to which very few people have access. Exploring it means a slow immersion into the heart of a frozen, almost unreal desert, where the variations in light transform one's perception of the landscape. In the kingdom of the polar bears, Le Commandant Charcot, a silent ship open to the exterior, will offer exceptional moments

observing Arctic wildlife, through a series of encounters.

#### Days 4 - 7 Exploration of Ittoqqortoormiit Region

On the East coast of Greenland, in the Ittoqqortoormiit region that is covered with snow and ice for nine months of the year, you will have the rare opportunity of immersing yourself in the heart of an isolated territory and exploring the beauty of its infinite polar whiteness. The high alpine mountains punctuate the sky and gradually reveal their dark rock edges beneath a coat of snow. Located at the entrance to the longest system of fjords in the world, sits the village of Ittoqqortoormiit, one of the northernmost inhabited places on the East coast. Its name means 'great house' in Greenlandic and it is home to the last hunters of the polar region, whose ancestral way of life you will encounter. As soon as the thickness of the ice floe allows it, the hunters set out on the trail of walruses, seals, narwhals, musk oxen and polar bears, travelling by traditional dog sleds. On these expanses of immaculate snow, the silence is broken only by the sounds of the dogs, the grating of a sled coming back from a run or of footsteps on the ice. You will discover Inuit traditions through privileged and festive moments on the ice floe and in the village.

#### Days 8 - 9 Exploration of North-East Greenland

Set sail for North-East Greenland to immerse yourself further and up higher in the Arctic region to explore the unexpected riches of the sea ice, where traditional ships cannot travel at this time of the year. As the light shifts and the moods of the sky change, the different states of the ice and the infinite diversity of





its textures create an exceptionally stunning tableau. With patience and humility, you will sail amid the pearl-white floating cathedrals and the ice carried by the Transpolar Drift. En route, icebergs have their journey halted by ice and pressure ridges reveal their sharp edges. In the midst of this icy vastness, beauty is found in the detail and the magic of the moment. In the realm of polar bears, Le Commandant Charcot is a reassuring cocoon built for polar exploration and offers you wonderful opportunities to observe these lords of the ice when you happen upon them. You may even get the chance to admire the moving sight of a mother and her cub travelling across the immaculate icy expanse.

#### Day 10 At sea aboard Le Commandant Charcot

Spend exceptional moments sailing aboard Le Commandant Charcot, the world's first luxury polar exploration vessel and the first PC2-class polar cruise ship capable of sailing into the very heart of the ice, on seas and oceans which the frozen conditions render inaccessible to ordinary ships. Le Commandant Charcot is fitted with oceanographic and scientific equipment selected by a committee of experts. Take advantage of the on-board lectures and opportunities for discussion with these specialists to learn more about the poles. Participate in furthering scientific research with PONANT and let us discover together what these fascinating destinations have yet to reveal to us.

#### Days 11 - 13 Exploring the Blosseville Coast

Aboard your ship, follow in the footsteps of Jules Poret de Blosseville, a French explorer and sailor. In 1833, he set off to

discover this isolated and unexplored part of eastern Greenland aboard La Lilloise, an adventure with a fatal outcome. The uninhabited territory that bears his name lies to the south of Scoresby Sound. Surrounded by ice, icebergs and pack ice - thin or thick, flat or pronounced - as far as the eye can see, Blosseville Coast is a wild and distant place to which very few people have access. Exploring it means a slow immersion into the heart of a frozen, almost unreal desert, where the variations in light transform one's perception of the landscape. In the kingdom of the polar bears, Le Commandant Charcot, a silent ship open to the exterior, will offer exceptional moments observing Arctic wildlife, through a series of encounters.

#### Day 14 At sea aboard Le Commandant Charcot

Spend exceptional moments sailing aboard Le Commandant Charcot, the world's first luxury polar exploration vessel and the first PC2-class polar cruise ship capable of sailing into the very heart of the ice, on seas and oceans which the frozen conditions render inaccessible to ordinary ships. Le Commandant Charcot is fitted with oceanographic and scientific equipment selected by a committee of experts. Take advantage of the on-board lectures and opportunities for discussion with these specialists to learn more about the poles. Participate in furthering scientific research with PONANT and let us discover together what these fascinating destinations have yet to reveal to us.

#### Day 15 Reykjavik

Iceland's capital stretches along the edge of a vast bay in the west of the country. Perlan, the "Pearl of Reykjavik", a museum



located on 'Oskjuhlíð hill, offers a panoramic view of the lush, green landscapes. A little further, one can easily spot the signpost showing the way to the evangelical Hallgrímskirkja church, and to the historical centre where one can stroll along the Skólavordustigur and the Laugavegur, two lively streets with charming small shops. For some relaxation just outside of the city, visitors have the opportunity to visit the Reykjanes peninsula and its famous thermal lagoons of the Blue Lagoon.

Please note:

We are privileged guests in these extreme lands where we are at the mercy of weather and ice conditions. Our navigation, mostly in the fjords, will be determined by the type of ice we come across; as the coastal ice must be preserved, we will take this into account from day to day in our itineraries. The sailing programme, outings, activities and observation of fauna cannot be guaranteed and are subject to weather and ice conditions. The experiences are unique and vary from day to day and for each departure. The Captain and the Expedition Leader will make every effort to ensure that your experience is as rich as possible, while respecting safety instructions and regulations imposed by the AECO.





## YOUR SHIP: LE COMMANDANT-CHARCOT

**YOUR SHIP:** Le Commandant-Charcot

**VESSEL TYPE:**

**LENGTH:**

**PASSENGER CAPACITY:**

**BUILT/REFURBISHED:**

With its hybrid propulsion combining liquefied natural gas (LNG) and electric generators, Le Commandant-Charcot has been designed to minimise the environmental impact of travel to the furthest latitudes. The decoration of the ship, designed by two internationally renowned design and architecture firms - the studio of Jean-Philippe Nuel and Wilmotte & Associes - is designed to be in harmony with the environment. The approach is contemporary with the desire to create a warm and elegant setting; stone, wood and leather recall the natural environment in which the ship is sailing. Equipped with just 135 staterooms including 31 suites with balconies and outside views, Le Commandant-Charcot welcomes you in an intimate and refined atmosphere. Outstanding gastronomy in the two restaurants, relaxation in the indoor pool surrounded by its winter garden, relaxation in the well-being area with sauna and Snow Room... Like on a private yacht, each of our guests is unique. **PUBLIC AREAS** Le Commandant-Charcot has many common areas that are designed and equipped to meet all of your needs while preserving the intimacy of each passenger. A 177 m<sup>2</sup> reception area includes: A reception/concierge desk, An expeditions desk, The ship's administrative services, The sales office, manned by

our Hospitality & Travel Manager officer, Our boutique which sells clothing, jewellery, beauty products, postcards and various accessories, The image & photo desk. The different lounges include a 302 m<sup>2</sup> main lounge including a 28 m<sup>2</sup> cigar lounge, a tea corner and a bar, with live music on selected evenings, A 400 m<sup>2</sup> panoramic bar and lounge, An open-air Bar. The recreation spaces Fitness & Beauty Corner: Fitness room: Elliptic, running machines, bicycles... Beauty Corner: Hairdresser, Massage rooms, Sauna, Snow Room, Nail Shop. Pool area: Indoor Pool and winter garden - Outdoor Pool Theatre: Capacity: 270-276 - Main show room for conferences and live entertainment on selected evenings - State-of-the-art audio and video technology. Leisure area: Public areas - Library - Medical centre. 16



Zodiacs on board.



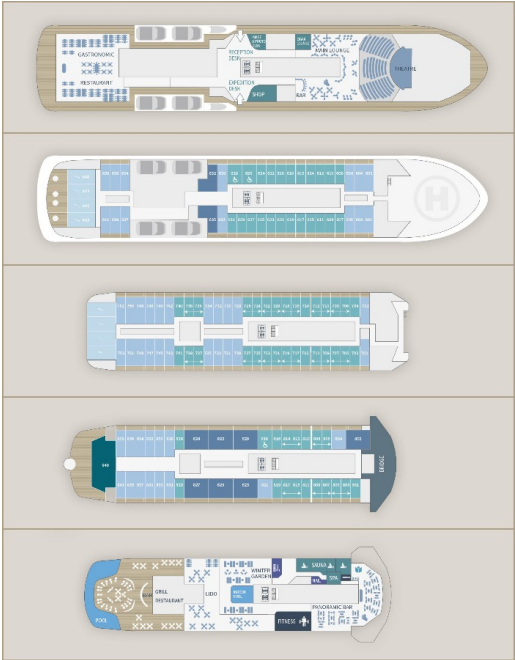


# The Small Cruise Ship Collection

www.small-cruise-ships.com

[small-cruise-ships.com](http://small-cruise-ships.com)
[info@small-cruise-ships.com](mailto:info@small-cruise-ships.com)

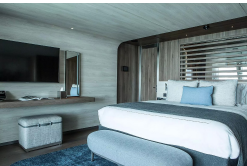
# INSIDE YOUR SHIP



Deluxe Suite Deck 6



Deluxe Suite Deck 8



Deluxe Suite Deck 7

Duplex Suite

Grand Prestige Suite

Prestige Stateroom Deck 6

Prestige Stateroom Deck 8

Prestige Suite Deck 8

Owner's Suite

Prestige Stateroom Deck 7

Prestige Suite Deck 7

Privilege Suite Deck 8





# The Small Cruise Ship Collection

www.small-cruise-ships.com

small-cruise-ships.com

info@small-cruise-ships.com

## PRICING

### 14-May-2026 to 28-May-2026

Prestige Suite Deck 7	£31975 GBP pp
Deluxe Suite Deck 6	£22815 GBP pp
Deluxe Suite Deck 8	£24725 GBP pp
Prestige Stateroom Deck 8	£22175 GBP pp
Prestige Stateroom Deck 7	£21755 GBP pp
Suite Duplex	£50065 GBP pp
Prestige Suite Deck 8	£33035 GBP pp
Deluxe Suite Deck 7	£23879 GBP pp
Privilege Suite Deck 8	£36225 GBP pp
Prestige Stateroom Deck 6	£21325 GBP pp
Grand Prestige Suite	£34089 GBP pp
Owner's Suite	£69535 GBP pp

### 25-May-2027 to 08-Jun-2027

Grand Prestige Suite	£29565 GBP pp
Deluxe Suite Deck 7	£20739 GBP pp
Prestige Stateroom Deck 7	£18905 GBP pp
Duplex Suite	£43375 GBP pp
Privilege Suite Deck 8	£31409 GBP pp
Deluxe Suite Deck 8	£21475 GBP pp
Deluxe Suite Deck 6	£19819 GBP pp
Prestige Suite Deck 8	£28649 GBP pp
Prestige Suite Deck 7	£27729 GBP pp
Prestige Stateroom Deck 8	£19265 GBP pp
Prestige Stateroom Deck 6	£18529 GBP pp