



The Small Cruise Ship Collection

www.small-cruise-ships.com

small-cruise-ships.com

info@small-cruise-ships.com

NORTH-WEST SVALBARD BY SAIL

The trips in the Arctic spring are one of the most beautiful and purest trips that sailing ship Noorderlicht makes. The landscape is still pristine white and because there is often floating ice in the fjords, there is a great chance of spotting polar bears, seals & walrus. From the end of April in Svalbard we experience the midnight sun, which means that there are 24 hours of daylight. In the mornings and evenings, the light is phenomenal, making these trips extremely suitable for photography enthusiasts.



ITINERARY

Day 1 - Day 1: Embarkation in Longyearbyen

You will arrive at the small airport of Longyearbyen, located about 15 minutes drive from the centre of the small town. Our sailing ship Noorderlicht will be waiting for you at the so-called 'floating pier' where you can embark from 16:00. After a welcome from the captain, the mooring lines will be cast off and the ship sets course towards Trygghamna bay, where it will



anchor for the night.

Day 2: Visit to seabird cliff Alkhornet

The first zodiac landing in Trygghamna. You can see the remains of a 17th century whaling stations. From here we will hike to the 428-meter high Alkhornet cliff, where some 10,000 pairs of different seabirds breed. After lunch on board the crew will set sail and head to the bay Grimaldibukta.

Day 3-10: Sailing towards North-west Spitsbergen

Day 11 - Loneyarbyen

Unfortunately, our adventure through the Arctic landscape of Spitsbergen has come to an end. After a hearty breakfast, you are kindly requested to disembark by 09:00.

Please Note:

All itineraries are for guidance only. Programs may vary depending on ice, weather, and wildlife conditions. Landings are subject to site availabilities, permissions, and environmental concerns per AECO regulations. Official sailing plans and landing slots are scheduled with AECO prior to the start of the season, but the expedition leader determines the final plan. Flexibility is paramount for expedition cruises.



YOUR SHIP: NOORDERLICHT

YOUR SHIP: Noorderlicht

VESSEL TYPE:

LENGTH:

PASSENGER CAPACITY:

BUILT/REFURBISHED:

The Noorderlicht was originally built in 1910 in Flensburg, Germany as a three-masted schooner. For most of her existence she served as a light-vessel on the Baltic. In 1991 the present owners purchased the hull and re-rigged and refitted her thoroughly, under the rules of "Register Holland". The Noorderlicht now has a well-balanced two-masted schooner rig and is capable of sailing the seven seas. The qualified captains have a great experience of the oceans. Together with the rest of the crew, they will do everything possible to ensure that you have a wonderful and unforgettable journey. Ice class: The Noorderlicht has no ice class. She was anchored year around near Flensburg (Germany). Due to heavy ice conditions in the winter time, the bow of the Noorderlicht was strengthened. The vessel is not an ice breaker but has a strengthened bow.





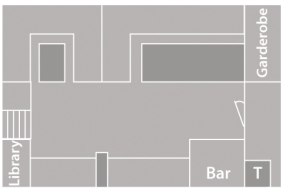
The Small Cruise
Ship Collection

www.small-cruise-ships.com

small-cruise-ships.com

info@small-cruise-ships.com

INSIDE YOUR SHIP



s/v Noorderlicht deckplan		
<div> twin shared inside</div>	<div> upper and lower berth</div>	<div><div>T Toilet</div><div>S Shower</div></div>



The Small Cruise
Ship Collection

www.small-cruise-ships.com

01432 507 280 (within UK)

info@small-cruise-ships.com | small-cruise-ships.com



The Small Cruise Ship Collection

www.small-cruise-ships.com



small-cruise-ships.com

info@small-cruise-ships.com

PRICING



The Small Cruise
Ship Collection

www.small-cruise-ships.com

01432 507 280 (within UK)

info@small-cruise-ships.com | small-cruise-ships.com