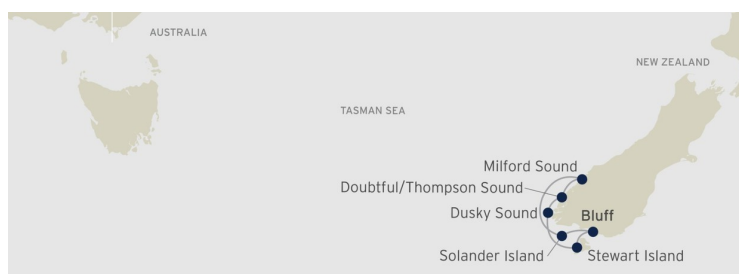




NEW ZEALAND SOUNDS AND STEWART ISLAND - FROM BLUFF TO BLUFF

Uncover the raw beauty of New Zealand's South Island on this 8-night expedition voyage aboard Coral Adventurer. Journey deep into the World Heritage-listed Fiordland National Park, where remote waterways like Dusky, Doubtful, and Milford Sound reveal towering cliffs, cascading waterfalls, and inlets teeming with life. Encounter fur seals along the rocky shores, glimpse rare native birds in the forests of Ulva Island, and sail past the dramatic volcanic silhouettes of Solander Island. With expert guides leading the way, each day promises enriching discovery--whether tracing ancient rainforest trails or cruising beneath glacial falls. In the evenings, return to warm hospitality on board and enjoy the flavours of New Zealand's acclaimed food and wine, shared in good company and framed by the wild southern landscape.



ITINERARY

Depart Bluff | Motup hue

Your journey begins in Queenstown, where you'll meet your fellow travellers and expedition team at the QT Queenstown hotel (formerly Rydges Lakeside) from 10:30am for check-in and a warm welcome, with tea, coffee and morning tea. From here, we will travel south to Bluff - the southernmost settlement on New Zealand's mainland and gateway to Stewart Island. Alternatively, bluff pickup can be arranged. Please speak to our reservations team for more information.

You'll board Coral Adventurer in the afternoon and settle in before setting sail along the rugged southern coastline. This evening, enjoy Captain's welcome drinks and take in views of Stirling Point, marking the start of your journey.

Stewart Island | Rakiura

Known in Maori mythology as Te Punga o Te Waka - Stewart



The Small Cruise Ship Collection

www.small-cruise-ships.com

small-cruise-ships.com

info@small-cruise-ships.com

Island (Rakiura) is New Zealand's little-known 'third island'. Apart from the communities on the island, many people never venture to this remote corner of the world. For the next three days, we will truly connect with nature. Enjoy a guided walk led by the expert guides at the Ulva Bird Sanctuary, which offers a predator-free environment for rare and endangered birds, and visit the remains of the Norwegian Whaling Base. Spend the day on a guided hike on a section of the Rakiura track (conditions permitting) and a local bus tour of Oban and its surrounds.

Optional Extra: Enjoy a scenic flight with an expert pilot taking in the views of Rakiura National Park, the Rugged Ranges and a landing on the golden sands of Mason's Bay.

[Dusky Sound](#) | [Tamatea](#)

Spend two days exploring Fiordland National Park, a World Heritage site once described as the 'Eighth Wonder of the World'. Discover the remote wilderness of Dusky Sound (Tamatea), first sighted by Captain Cook in 1770. With sheer cliffs, tumbling waterfalls, and a dense rainforest reflected in glassy waters, this vast fiord offers spectacular scenery and a rich history. Join our expedition team for zodiac and Xplorer trips to hidden inlets and wildlife colonies. We will then land at Astronomer's Point, where Cook's crew once charted the stars. Take part in guided walks, waterfall viewing, kayaking, and a cold-water swim to uncover the true remoteness of this region.

[Doubtful Sound](#) | [Patea](#)

Wake to the silence of Doubtful Sound (Patea), where this deep,

long and narrow inlet, with cliffs, has been formed by glacial erosion over millions of years. We are currently in one of New Zealand's most pristine environments. Cruise past the outer Seal Islands and spot dolphins, fur seals, and possibly the elusive Fiordland crested penguin or join a guided hike between Deas Cove and Neck Cove and take a swim in the cool, clear and shallow waters.

[Milford Sound](#) | [Piopiotahi](#)

Encounter breathtaking views as we enter the Milford Sound (Piopiotahi), heading towards the famous Stirling Falls. You will have a chance to feel the spray from Stirling Falls and get a close-up view in your designated Zodiacs/Xplorers. Witness the world-famous view of Mitre Peak, rising some 1,682 meters. Its triangular silhouette rises opposite the beautiful Stirling Falls, falling from the top of a 162m-high cliff between two towering ridges into the water's deep shades of turquoise and emerald.

[Solander Island](#) | [Hautere](#)

Spend the day cruising through the Solander Islands (Hautere), a trio of uninhabited volcanic islets that lie just beyond New Zealand's South Island. Aboard the Endeavour, Captain James Cook spotted the islands in early 1770, and was named after a Swedish scientific crew member on board, Daniel Solander. The islands have only been known to be inhabited briefly due to marooning or shipwreck. With one third of the wildlife on the islands being incredibly rare, it is likely that you will spot fernbirds, snipe and white-fronted terns. The island has been declared an Important Bird Area as it is a breeding site for

The Small Cruise Ship Collection
www.small-cruise-ships.com

01432 507 280 (within UK)

info@small-cruise-ships.com | small-cruise-ships.com



common diving petrels and Buller's albatrosses amassing some 5000 pairs.

Arrive Bluff | Motup hue

Prepare for disembarkation as the ship arrives into Bluff Port, followed by farewell to the crew and new-found friends at 8:00 am. Enjoy a complimentary transfer by coach to Queenstown hotels or airport after disembarkation.

Please Note:

This itinerary is an indication of the destinations we visit and activities on offer. Throughout the expedition we may make changes to the itinerary as necessary to maximise your expeditionary experience. Allowances may be made for seasonal variations, weather, tidal conditions, and any other event that may affect the operation of the vessel. Coral Expeditions suggests that you do not arrive on the day of embarkation or depart on the day of disembarkation due to any changes that may occur in scheduling.



The Small Cruise Ship Collection

www.small-cruise-ships.com

small-cruise-ships.com

info@small-cruise-ships.com

YOUR SHIP: CORAL ADVENTURER

YOUR SHIP: Coral Adventurer

VESSEL TYPE:

LENGTH:

PASSENGER CAPACITY:

BUILT/REFURBISHED:

Launched in 2018 with her maiden voyage in 2019, Coral Adventurer has been designed and built to take you closer to unspoilt vistas in comfort, style and safety. A culmination of two years of design and three decades of passion for expedition cruising. BIGGER IS NOT BETTER At a time when cruise ships get larger and glitzier, we remain stubbornly compact and intimate. Our ships are designed to take you to unspoilt destinations not accessible to large ships. We want you to have the luxury of space, dine with whom you please, or find your quiet corner on deck. So Coral Adventurer has just 60 spacious cabins. This preserves the intimate atmosphere we are known for without sacrificing the stability and comfort of a true ocean going vessel. BUILT FOR DISCOVERY The Coral Adventurer features the trademark dual 'Xplorer' tenders cradled on a hydraulic platform slung off the back of the ship, enabling our guests to go ashore in comfort and ease. The shallow draft of the ship enables us to go closer to shore than larger ships. Together with a renowned expedition team, this new ship will offer the most advanced expedition capabilities of any small ship afloat. BUILT FOR COMFORT With active stabilisers dampening sea motion, mostly balcony cabins, and interiors designed with the colours and

textures of tropical Queensland, the Coral Adventurer is a comfortable ship. She features promenade decks, generous communal areas that accommodate all guests, a passenger elevator, and an open kitchen where you can observe our chefs whip up small batch cuisine from locally sourced ingredients. BUILT FOR PERSONAL SERVICE The Coral Adventurer will continue a proud tradition of Australian flagged vessels with friendly and professional Australian crew. The onboard atmosphere remains refreshingly informal and intimate. Take your seat at our bridge lounge, chat with the captain at your leisure or accompany our chefs on a market tour. Food and wine features Single seating dining area with communal 'wine table' finished with Australian stone; serving buffet breakfast and lunch, and multi-course table d'hote dinners Showcase galley visible to guests for fresh small-batch cuisine featuring Australian produce Multiple indoor and outdoor bars, including the Explorer bar on the sundeck for sunset drinks with 180 degree views Curated wine cellar featuring modestly priced boutique wines for daily drinking and exceptional vintage Australian reds. Guest comfort All outside guest cabins with en-suite bathrooms; majority have private balcony Active stabilisers to dampen sea motion Gym equipped with elliptical trainers and treadmills Passenger elevator Wi-Fi available in all



guest areas

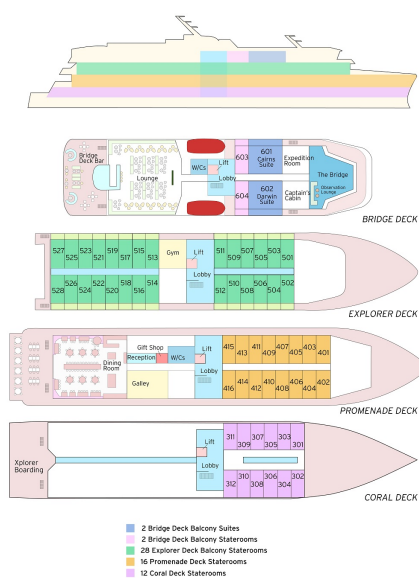
The Small Cruise Ship Collection

www.small-cruise-ships.com

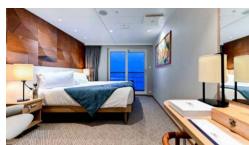
small-cruise-ships.com

info@small-cruise-ships.com

INSIDE YOUR SHIP



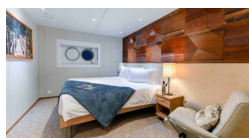
BRIDGE DECK BALCONY STATEROOM



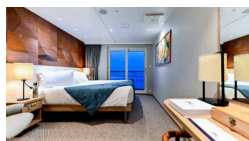
BRIDGE DECK BALCONY SUITE



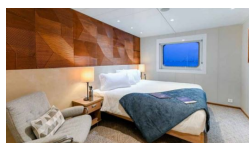
CORAL DECK STATEROOM



EXPLORER DECK BALCONY STATEROOM



PROMENADE DECK STATEROOM





PRICING

16-Dec-2026 to 24-Dec-2026

| | |
|---------------------------------|--------------|
| PROMENADE DECK STATEROOM | £5095 GBP pp |
| EXPLORER DECK BALCONY STATEROOM | £6585 GBP pp |
| BRIDGE DECK BALCONY STATEROOM | £7135 GBP pp |
| BRIDGE DECK BALCONY SUITE | £8895 GBP pp |
| CORAL DECK STATEROOM | £4375 GBP pp |