

## The Small Cruise Ship Collection

[www.small-cruise-ships.com](http://www.small-cruise-ships.com)

[small-cruise-ships.com](http://small-cruise-ships.com)

[info@small-cruise-ships.com](mailto:info@small-cruise-ships.com)

### NEW ZEALAND COASTAL ODYSSEY - 11 DAY CRUISE

Heritage Expeditions pioneered expedition cruising in New Zealand in 1984 and have been supporting New Zealand conservation for more than 50 years. Our New Zealand Coastal Odyssey voyage rolls all this experience into one voyage as we share the hidden gems of Aotearoa/New Zealand and its three main islands (the North Island, South Island, and Stewart Island) with you on this unforgettable 11-day expedition cruise. From the bright lights of New Zealand's largest city to the geothermal wonderland of Rotorua, Wellington's capital of cool, Dunedin's avant garde fashion labels, Fiordland and Milford Sound's iconic scenery to the adventure playground of Queenstown - this is the ultimate Kiwi adventure to experience it all. With the 9th longest coastline in the world measuring some 15,000 kilometres you will wind through narrow fiords, circumnavigate small islands, explore secluded bays, and visit quaint seaside towns. Bordering the Tasman Sea and the Pacific Ocean, and once part of Gondwanaland, New Zealand has a fascinating natural and cultural history from its first Polynesian arrivals through European settlement, early sealing and whaling and world leading conservation efforts. Places of interest include the sunken valleys and towering mountains of Fiordland's Milford, Doubtful and Dusky Sounds; the volcanoes, hot springs and geysers of Rotorua; the 'World's Coolest Little Capital' (Wellington); the stunning marine mammal playground of Kaikoura and home of New Zealand whale watching where the mountains meet the sea; the Scottish city of Dunedin; the iconic wildlife havens of Stewart Island and nearby predator free Ulva Island; and many Kiwi towns along the way including the French-infused village of Akaroa. Those looking for a thrilling

exploration filled with wildlife encounters will enjoy observations of dolphins and whale watching, exceptional birdwatching including a number of rare endemic species and an albatross colony on the Otago Peninsula. Those with a taste for gourmet delights will enjoy experiencing some of New Zealand's award-winning cuisine including the wines of Canterbury and Marlborough and cheese in Akaroa. Our vessel Heritage Adventurer is built for exploring regions manifest like New Zealand's intricate coastline, navigating through fiords, cruising up harbours, and allowing for Zodiac cruising to remote and isolated bays. We invite you to join us on this in-depth exploration of



New Zealand.

#### ITINERARY

Day 1: Auckland

The Small Cruise Ship Collection  
[www.small-cruise-ships.com](http://www.small-cruise-ships.com)

01432 507 280 (within UK)

[info@small-cruise-ships.com](mailto:info@small-cruise-ships.com) | [small-cruise-ships.com](http://small-cruise-ships.com)



Make your way to Auckland's cruise terminal located in the 'City of Sails' picturesque Waterfront this afternoon and board Heritage Adventurer. Settle into your accommodation and familiarise yourself with the ship before joining the expedition team in the Observation Lounge and up on the Observation Deck as we set our course to Tauranga and our adventure begins

#### Day 2: Tauranga/Rotorua

From our berth in Tauranga we drive inland, passing the rich horticultural region of the Bay of Plenty as we travel to the geothermal heartland of Rotorua. Marvel at the abundance of steam vents, geysers and bubbling mud pools as we explore one of the most geologically active regions on the planet and experience M ori arts, crafts and culture.

#### Day 3: At Sea

Sailing down the scenic North Island, enjoy a day at sea attending lectures, relaxing on board or looking for whales and dolphins from the Observation Deck, Lounge and Bridge as we sail to Wellington.

#### Day 4: Wellington

New Zealand's 'coolest little capital', Wellington is an exceptional natural harbour, where Heritage Adventurer will be

docked in the centre of the action. From here you can easily explore this vibrant city. Visit the cable car, explore the world-renowned Zealandia nature reserve, discover the Botanic Gardens and visit Te Papa New Zealand's national museum.

#### Day 5: Kaikoura

World famous for its abundant wildlife, seafood and, recently, dark sky status this picturesque small coastal town boasts a plethora of things to do. Take a walk along the Hinau Track, Point Kean Viewpoint and observe the colony of New Zealand Fur seals and seabirds or continue on to Whalers Bay Lookout. If you're a keen hiker the Kaikoura Peninsula Walkway combines stunning wildlife and views while the quirky town includes fascinating shops, museum and galleries to explore.

#### Day 6: Akaroa

Heritage Adventurer will make her way through the Akaroa heads and anchor in the sheltered waters off Canterbury's largest harbour. It was here, beneath the eroded volcanic hills of Banks Peninsula, that the French attempted to settle in 1840. The French connection remains to this day with a certain je ne sais quoi imbuing the township of Akaroa. Explore Akaroa, greater Banks Peninsula or one of the local nature walks.

#### Day 7: Dunedin

This morning sail into the beautiful Otago Harbour, watch closely for Northern Royal Albatross at the Tairua Head Albatross





## The Small Cruise Ship Collection

[www.small-cruise-ships.com](http://www.small-cruise-ships.com)

[small-cruise-ships.com](http://small-cruise-ships.com)

[info@small-cruise-ships.com](mailto:info@small-cruise-ships.com)

Colony. Explore the famed fashion-forward city of Dunedin, the Edinburgh of the south, and its rich history as the gateway to Otago. Explore the scenic Otago Peninsula where New Zealand Sea Lions rest and former Bird of the Year Yellow-eyed Penguins/Hoiho can be spotted in one of their last mainland strongholds, and where the beautiful, farmed hills roll down towards white sand beaches.

### Day 8: Stewart Island

New Zealand's third island is well off the usual beaten tourist track. It is a wonderfully tranquil place; the scenery of untouched bushland is stunning. We will enjoy a morning exploring Ulva Island which is rich in history and wildlife, being a predator-free island since 1997 the bird song and wildlife is some of the best. In Paterson Inlet you will have time to explore the sandy beaches of Boulder Bay and West End Beach or just enjoy some time around Post Office Bay and Sydney Cove. Some of the wildlife you may get to see while walking the tracks on Ulva Island include Stewart Island Robin, Stewart Island Weka, South Island Kaka, Kereru (Wood Pigeon), Mohua (Yellowhead), Red-crowned Parakeet, Fantail, Bellbird and Tui. There are many more species that may also be seen, our knowledgeable expedition guides will be listening for bird calls and keeping a close watch in overhead canopies and the surrounding shrubs to identify further species. During our time in Paterson Inlet there will also be the opportunity to explore the quirky town centre Oban in Halfmoon Bay where a drink with a view can be enjoyed at the iconic South Sea Hotel. There are also some beautiful walks in the surrounding forests.

### Days 9 & 10: Fiordland

We have two days to explore the incredible wilderness of Fiordland in the south-west corner of the South Island. This is an area rich in history, majestic scenery and abundant in wildlife. Fiordland was well known to local M ori, with the demi-god Tu-teraki-whanoa being said to have used his adze, Te Hamo, to carve out the region's fiords. Captain Cook and his crew landed here on HMS Resolution in 1773, they were the first Europeans to visit Fiordland, subsequently spending five weeks in Dusky Sound. Cook's records of his discovery and maps attracted sealers and whalers. Historically this region is very important and shaped the future of the country. Fiordland's coast is only accessible by sea, making it the most remote region of New Zealand's mainland. Waterfalls, streams, rivers, and fiords are enveloped with misty veils that come and go, revealing steep gradients of mountain peaks and sheltered valleys. A rugged terrain, the thickly forested floors are covered with ferns, lichens, and mosses. Bottlenose Dolphins, Fiordland Crested Penguins and Little Blue Penguins are all residents of the fiords; during our time here we will look for them. Our schedule gives us the flexibility to visit as much as possible, areas we plan to explore include Doubtful, Dusky and Milford Sound, Acheron Passage, Astronomer's Point and Pickersgill Harbour. Enjoy a stunning sunset cruise in one of New Zealand's most iconic destinations, Milford Sound. During our time in Dusky Sound there will be the optional opportunity to experience an unforgettable helicopter flight through the Sound swooping down alongside Cooper Island and Cook Channel with a landing on Mt Pender where spectacular vistas across constellations of islands stretching into the horizon and dotting the winding fiords can be enjoyed. Our final plan will be determined by the weather. The Captain

The Small Cruise Ship Collection  
[www.small-cruise-ships.com](http://www.small-cruise-ships.com)

**01432 507 280** (within UK)

[info@small-cruise-ships.com](mailto:info@small-cruise-ships.com) | [small-cruise-ships.com](http://small-cruise-ships.com)



and Expedition Leader will work hard to make the best use of our time in this incredible region of New Zealand, including areas that a few New Zealanders have visited.

#### Day 11: Invercargill/Queenstown

Early this morning we will arrive in the Port of Bluff. After a final breakfast we bid farewell to our fellow voyagers and take a complimentary coach transfer to either Invercargill or Queenstown Airports. In case of unexpected delays due to weather and/or port operations we ask you not to book any onward travel until after midday from Invercargill and after 3pm from Queenstown.

#### Please note:

During our voyage, circumstances may make it necessary or desirable to deviate from the proposed itinerary. This can include poor weather and opportunities for making unplanned excursions. Your Expedition Leader will keep you fully informed. This voyage offers a variety of activities and excursions. Your personal interests will determine which of these you wish to join. Please note that some activities and excursions will run at similar times, and it will not be possible to participate in both. Accordingly, refunds for excursions and missed landings are not available. Voyages are planned and scheduled pending final regulatory approval.





## The Small Cruise Ship Collection

[www.small-cruise-ships.com](http://www.small-cruise-ships.com)

[small-cruise-ships.com](http://small-cruise-ships.com)

[info@small-cruise-ships.com](mailto:info@small-cruise-ships.com)

## YOUR SHIP: HERITAGE ADVENTURER

**YOUR SHIP:** Heritage Adventurer

**VESSEL TYPE:**

**LENGTH:**

**PASSENGER CAPACITY:**

**BUILT/REFURBISHED:**

Heritage Adventurer is a true pioneering expedition vessel of exceptional pedigree. Often referred to as the 'Grande Dame of Polar Exploration' due to her celebrated history and refined design, she was purpose-built for adventure in 1991 at Finland's Rauma shipyard and specifically designed for Polar exploration. Setting a peerless standard in authentic expedition travel, Heritage Adventurer (formerly known as MS Hanseatic) combines the highest passenger ship ice-class rating (1A Super) with an impressive history of Polar exploration. Having held records for the most northern and southern Arctic and Antarctic navigations, and for traversing both the Northwest and Northeast Passages, makes Heritage Adventurer perfect for pioneering experiential expedition travel. Originally designed to accommodate 184 guests, Heritage Adventurer now welcomes just 140 expeditioners ensuring spacious, stylish and comfortable voyages, while a fleet of 14 Zodiacs ensures all guests are able to maximise their expedition adventure. Heritage Adventurer proudly continues our traditions of exceptional, personalised expedition experiences as Heritage Expeditions flagship. Observation Lounge - One of the most celebrated and best-known features of Heritage Adventurer is the awe-inducing

Observation Lounge, Library and Bar. Located on Deck 7 and perched directly above the Bridge, enjoy sweeping 270-degree views through floor to ceiling windows, perfect for wildlife spotting and quick access to the outer deck. Bring your binoculars to spot wildlife, observe the ever-changing landscape, write in your journal or relax with a book. Observation Deck - Enjoy 360-degree views from the highest point on the ship. The Observation Deck sits above the Observation Lounge and provides exceptional outside viewing options. Stretching the full width of the vessel, this is the perfect spot to take in the surrounding land and seascapes. Perfect on a sunny day, recline in the comfortable sun loungers protected from the wind and elements and watch your voyage unfold. The Bridge - No expedition is complete without visiting Heritage Adventurer's busy nerve centre. Located on Deck 6, Heritage Expeditions' Open Bridge Policy means you are welcome to observe the Captain and crew at work while enjoying some of the ship's best views. It's a fascinating place to learn about navigation and vessel operations, however please note the Bridge will be closed when departing or arriving at port. Dining Room - Indulge in fine international cuisine from our talented chefs in the lavish surrounds of our Dining Room on Deck 4. Sensational 270-degree views provide a stunning backdrop to meals here along with an international wine list featuring many outstanding regional wines. With relaxed seating arrangements, all guests can enjoy dining in a single sitting from hearty breakfasts setting you up for the day's adventure to sumptuous lunches and multi-course evening dining. Bistro - Simple fast and delicious meals and snacks are on offer in our relaxed

The Small Cruise Ship Collection  
[www.small-cruise-ships.com](http://www.small-cruise-ships.com)

**01432 507 280** (within UK)

[info@small-cruise-ships.com](mailto:info@small-cruise-ships.com) | [small-cruise-ships.com](http://small-cruise-ships.com)

# The Small Cruise Ship Collection

[www.small-cruise-ships.com](http://www.small-cruise-ships.com)

[small-cruise-ships.com](http://small-cruise-ships.com)

[info@small-cruise-ships.com](mailto:info@small-cruise-ships.com)

Bistro on Deck 6. Perfect for early risers to enjoy tea, coffee and light breakfast options the Bistro provides great views and opens directly onto a covered and heated teak-deck outdoor dining area. The Bar and Lounge - The social hub of Heritage Adventurer, the Bar and Lounge on Deck 5 features seating for all guests. Enjoy a beverage at the bar, sink into an armchair, relax on one of the many spacious loungers and watch the world go by through the panoramic windows or make new friends at the communal seating. This multi-tasking space also doubles as the location of daily briefings and evening recaps with the expedition team. The Gym - Featuring spectacular ocean views, the well-equipped gym is adjacent to the pool, hot tub and sauna in Deck 7's wellbeing zone. Maintain your routine with an elliptical cross trainer, treadmill, rowing machine, stationary bikes, TRX as well as free weights, yoga mats and fitness balls. Towels are provided with change room and shower amenities nearby. Sauna and Steam Room - True to her Nordic origins, Heritage Adventurer features a dry-heat Finnish sauna and European steam room on Deck 7. Perfect for warming up post Polar plunge or unwinding after a day's adventures, the sauna and steam room include change room facilities, showers and towels. Swimming Pool and Hot Tub - Surrounded by relaxed teak seating including sun loungers, the open-air saltwater pool can be heated or chilled. Encased in glass the hot tub ensures all-weather use, perfect for those who like to relax with a view following a day of exploring. Lectures and Presentations - Enjoy informative and entertaining lectures on history, biology, wildlife, and ecology in the comfort of the Presentation Theatre. With state-of-the-art audio-visual equipment, our world-renowned expedition team will bring your adventure to life through interactive presentations and



discussions.

The Small Cruise  
Ship Collection

[www.small-cruise-ships.com](http://www.small-cruise-ships.com)

**01432 507 280** (within UK)

[info@small-cruise-ships.com](mailto:info@small-cruise-ships.com) | [small-cruise-ships.com](http://small-cruise-ships.com)



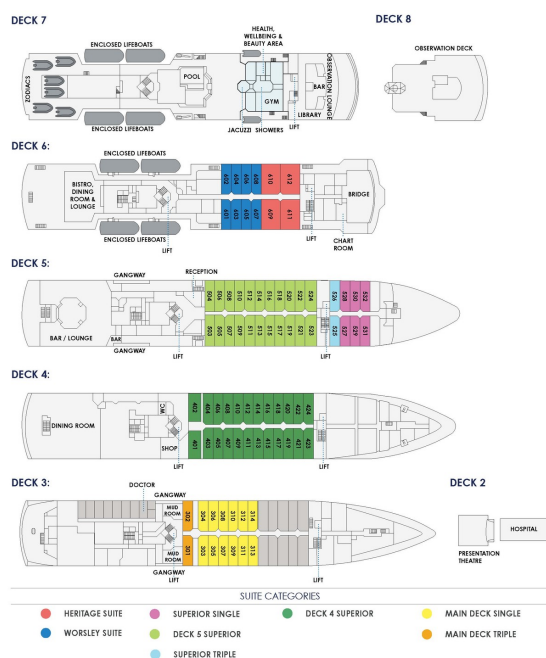
# The Small Cruise Ship Collection

www.small-cruise-ships.com

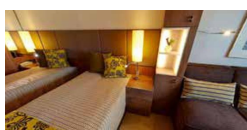
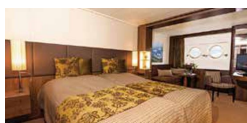
small-cruise-ships.com

info@small-cruise-ships.com

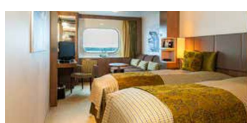
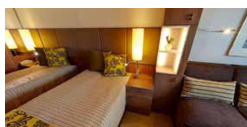
## INSIDE YOUR SHIP



### MAIN DECK SINGLE CABINS SUPERIOR CABINS DECK 4



### SUPERIOR CABINS DECK 5 SUPERIOR SINGLE CABINS



### WORSLEY SUITES





 The Small Cruise  
Ship Collection

[www.small-cruise-ships.com](http://www.small-cruise-ships.com)

[small-cruise-ships.com](http://small-cruise-ships.com)

[info@small-cruise-ships.com](mailto:info@small-cruise-ships.com)

small-cruise-ships.com

info@small-cruise-ships.com

## PRICING

<b>WORSLEY SUITES</b>	<b>£4935 GBP pp</b>
<b>SUPERIOR SINGLE CABINS</b>	<b>£4935 GBP pp</b>
<b>SUPERIOR CABINS DECK 4</b>	<b>£4455 GBP pp</b>
<b>SUPERIOR CABINS DECK 5</b>	<b>£4679 GBP pp</b>
<b>MAIN DECK SINGLE CABINS</b>	<b>£4615 GBP pp</b>

[www.small-cruise-ships.com](http://www.small-cruise-ships.com)

**01432 507 280** (within UK)

info@small-cruise-ships.com | **small-cruise-ships.com**