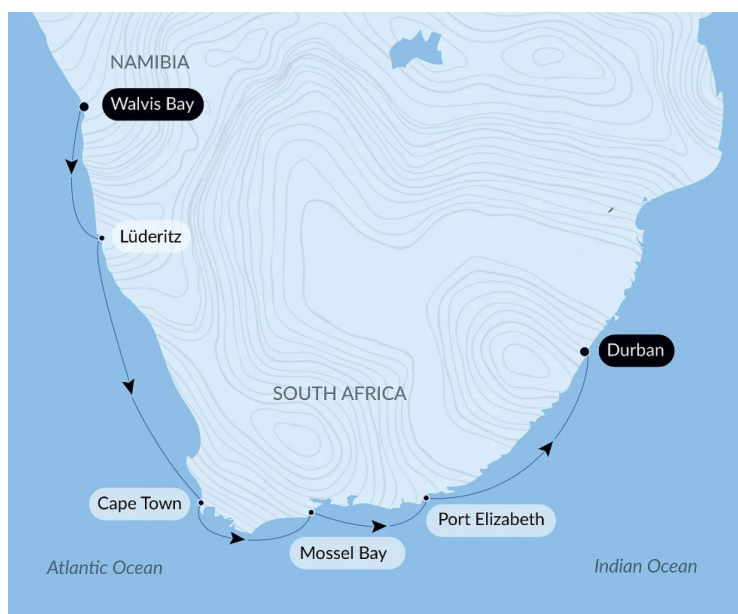




NAMIBIAN & SOUTH AFRICAN COASTLINES LUXURY SMALL SHIP CRUISE

Explore the incredible landscapes of southern Africa, discover its spectacular wildlife, and hear its fascinating stories. From the Atlantic coast and the Namib Desert - the oldest in the world - to the Indian Ocean via the iconic Cape of Good Hope, discover the kaleidoscopic riches of Namibia and South Africa. On this cruise, explore the ghostly Kolmanskop, a former diamond mining site, observe elephants, rhinos and buffaloes in Addo National Park or on a game drive in Botlierskop Game Reserve, and discover the unique atmosphere of the bustling V&A; Waterfront in Cape Town.



ITINERARY

Days 1 - 2 Walvis Bay

On the wild coastlines of Namibia, you will feel the force of the encounter between the infinite dunes of the oldest desert in the world and the tempestuous waves of the Atlantic Ocean. A natural port in the curve of a bay formed by an old river delta, Walvis Bay is protected from the whims of the ocean by the natural barrier of Pelican Point. It is a real refuge for migratory birds, where thousands of pink flamingos and Cape cormorants mix with one of the largest Cape fur seal colonies in the world. On the Namibian coastline, the seals make the most of the Benguela Current, cold and full of fish, which comes up from the Antarctic.



The Small Cruise Ship Collection

www.small-cruise-ships.com

small-cruise-ships.com

info@small-cruise-ships.com

Day 3 - Lüderitz

Located in Namibia, in southern Africa, Luderitz is a coastal town in the Karas region. A former German colony at the gates of the Namib desert, this singular town has houses featuring occasionally extravagant colonial architecture. With its sandy streets overlooking the ocean, the small port town gives off a particular atmosphere that will not leave you indifferent. Perched on a granite promontory, the Felsenkirche Lutheran church is well worth a visit, as are the Deutsche Afrika Bank building and the Goerke Haus monument. The Kolmanskop ghost town, with its hospital and abandoned colonial houses invaded by the desert sands, looks like it's come straight off a film set.

Day 4 - At sea

During your journey at sea, make the most of the many services and activities on board. Treat yourself to a moment of relaxation in the spa or stay in shape in the fitness centre. Depending on the season, let yourself be tempted by the swimming pool or a spot of sunbathing. This journey without a port of call will also be an opportunity to enjoy the conferences or shows proposed on board, depending on the activities offered, or to do some shopping in the boutique or to meet the PONANT photographers in their dedicated space. As for lovers of the open sea, they will be able to visit the ship's upper deck to admire the spectacle of the waves and perhaps be lucky enough to observe marine species. A truly enchanted interlude, combining comfort, rest and entertainment.

Day 5 - 6 Cape Town

Dynamic and peaceful, cosmopolitan and hip, Cape Town offers its visitors a most unique mix. Here, the locals like to say that their city is "the quintessential melting pot of South Africa". Located in the heart of one of the most beautiful bays in the

world and dominated by the famous Table Mountain, it is graced with extraordinary landscapes including sheer cliffs that plunge into the Atlantic Ocean and vast whitesand beaches. We invite you to discover this incredible city, the South African capital of fashion, the art of living, and gastronomy. Further on, the Cape of Good Hope Nature Reserve awaits you and is home to a wide variety of endemic fauna and flora.

Day 7 - At Sea

During your journey at sea, make the most of the many services and activities on board. Treat yourself to a moment of relaxation in the spa or stay in shape in the fitness centre. Depending on the season, let yourself be tempted by the swimming pool or a spot of sunbathing. This journey without a port of call will also be an opportunity to enjoy the conferences or shows proposed on board, depending on the activities offered, or to do some shopping in the boutique or to meet the PONANT photographers in their dedicated space. As for lovers of the open sea, they will be able to visit the ship's upper deck to admire the spectacle of the waves and perhaps be lucky enough to observe marine species. A truly enchanted interlude, combining comfort, rest and entertainment.

Day 8 - Mossel Bay

On the edge of the Indian Ocean, along the Garden Route, discover Mossel Bay, a small, welcoming harbour town surrounded by nature. Hike along a trail to discover the local landmark, Cape St Blaize, and its incredible views of the bay, or go on safari in the neighbouring Botlierskop Private Game Reserve, where you may be lucky enough to see some rhinos, elephants, etc.

Day 9 - Port Elizabeth



The Small Cruise Ship Collection

www.small-cruise-ships.com

small-cruise-ships.com

info@small-cruise-ships.com

Discover Port Elizabeth, one of South Africa's major cities. Located in the province of Eastern Cape, Port Elizabeth is nicknamed "The Friendly City", in reference to the hospitality of its inhabitants. Renowned for the beauty of its beaches, Port Elizabeth is also home to rich wild life, particularly in the Addo National Park, famous for its elephants. Another key site in the city, the Donkin reserve is a public space home to numerous historic monuments. Port Elizabeth also reflects an important aspect of South African history, through both its colonial heritage and its contemporary history marked by the end of apartheid.

Day 10 - At sea

During your journey at sea, make the most of the many services and activities on board. Treat yourself to a moment of relaxation in the spa or stay in shape in the fitness centre. Depending on the season, let yourself be tempted by the swimming pool or a spot of sunbathing. This journey without a port of call will also be an opportunity to enjoy the conferences or shows proposed on board, depending on the activities offered, or to do some shopping in the boutique or to meet the PONANT photographers in their dedicated space. As for lovers of the open sea, they will be able to visit the ship's upper deck to admire the spectacle of the waves and perhaps be lucky enough to observe marine species. A truly enchanted interlude, combining comfort, rest and entertainment.

Day 11 - Durban

Situated in the Kwazulu-Natal region, the cradle of Zulu culture, Durban is the third largest city in South Africa and one of Africa's major ports. Between long beaches rocked by the rollers of the Indian Ocean and the skyscrapers dominating the avenues lined with jacarandas, in this multicultural city with

African, Indian and colonial influences, the term "rainbow nation" takes on its full dimension. With a rich cultural and historical heritage, with its museums, colonial buildings and picturesque neighbourhoods, it is also known for the fauna and flora that surrounds it.

Please note:

Itineraries are subject to change.



YOUR SHIP: LE BOUGAINVILLE

YOUR SHIP: Le Bougainville

VESSEL TYPE:

LENGTH:

PASSENGER CAPACITY:

BUILT/REFURBISHED:

Featuring innovative and environmentally-friendly equipment, elegantly designed cabins, spacious suites with large windows, and lounge areas that open onto the outside, this new limited-capacity yacht boasting just 92 cabins and suites will offer you a truly unique cruising experience. As the first ship in a new series that remains true to the Ponant spirit, Le Bougainville will embody the unique atmosphere that is the cruise line's hallmark: a subtle blend of refinement, intimacy and comfort. Aboard this ship that flies the French flag, you will experience the incomparable pleasure of an intimate cruise, with the possibility of exploring an ever-increasing range of destinations in an ethnic-chic ambiance with luxury service. Experience a luxurious setting where the accent is on authenticity and passion for travel. **RESTAURANTS** As it is an essential part of French culture, gastronomy will naturally have pride of place aboard this new ship. Through its two restaurants, Le Bougainville will invite you on a journey to elegance and epicureanism. In a relaxed atmosphere, a first dining area located on Deck 3 and able to seat 70 will serve grilled meats daily, along with a variety of salads and desserts. To the back of Deck 4, you will find a 260 m² panoramic restaurant which can accommodate all of

our passengers in a single sitting. Designed differently to that on our other ships, this dining area, which opens onto the outside, will have a buffet of salads, desserts and cheeses at your disposal. Our discreet and attentive crew will provide table service for hot meals. **PUBLIC AREAS** Like Le Boreal and its sisterships, Le Bougainville has many common areas that are designed and equipped to meet all of your needs while preserving the intimacy of each passenger. A 140 m² reception area includes: A reception/concierge desk, An excursions desk, The ship's administrative services, The sales office, manned by our Guest Relations Officer, Our 50 m² boutique which sells clothing, jewellery, beauty products, postcards and various accessories, Toilets accessible to passengers with reduced mobility. A new hydraulic platform with adjustable height provides: Easier boarding than on any other cruise ship, Easier Zodiac embarkation and disembarkation for expeditions, Easier access to the sea for swimming and practising various water sports such as kayaking or paddle-boarding. A pool deck offering: A pool with a panoramic view, equipped with a counter-current swimming system, A pleasant solarium, An outdoor bar and lounge with armchairs and sofas. A 200 m² main lounge which can accommodate all of our passengers to share convivial moments and to host activities organised during the day or evening. Lastly, a theatre that seats 188, equipped with: The latest sound and lighting technology, A LED wall as the stage backdrop, for the projection of high-resolution images and videos. Please click the following links to read more about Ponant and the other Ponant



cruise ships.

The Small Cruise Ship Collection

www.small-cruise-ships.com

small-cruise-ships.com

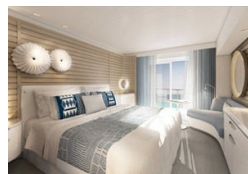
info@small-cruise-ships.com

INSIDE YOUR SHIP

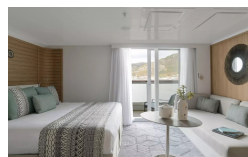


- Owner's Suite
Deck 6
- Privilege Suites
Deck 5-6
- Grand Deluxe Suites
Deck 5-6
- Prestige Suites
Deck 5-6
- Deluxe Suites
Deck 5-6
- Prestige Cabins
Deck 4-5-6
- Deluxe Cabins
Deck 3

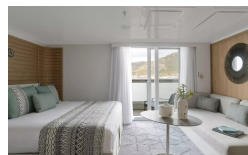
Deluxe Stateroom



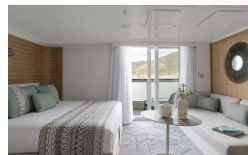
Deluxe Suite Deck 3



Deluxe Suite Deck 4



Deluxe Suite Deck 5



Deluxe Suite Deck 6

Grand Deluxe Suite Deck 6

Prestige Deck 5

Prestige Deck 6

Privilege Suite Deck 5

Grand Deluxe Suite Deck 5

Prestige Deck 4

Prestige Deck 5 Suite

Prestige Deck 6 Suite

Privilege Suite Deck 6



The Small Cruise
Ship Collection

www.small-cruise-ships.com

small-cruise-ships.com

info@small-cruise-ships.com

PRICING

07-Dec-2026 to 17-Dec-2026

Privilege Suite Deck 6	£13315 GBP pp
Privilege Suite Deck 5	£13315 GBP pp
Prestige Deck 6 Suite	£12675 GBP pp
Prestige Deck 6	£6375 GBP pp
Prestige Deck 5	£6035 GBP pp
Prestige Deck 4	£5755 GBP pp
Grand Deluxe Suite Deck 5	£13795 GBP pp
Deluxe Suite Deck 6	£8905 GBP pp
Deluxe Suite Deck 5	£8905 GBP pp
Deluxe Suite Deck 4	£8905 GBP pp
Deluxe Suite Deck 3	£8905 GBP pp
Deluxe Stateroom	£5185 GBP pp
Prestige Deck 5 Suite	£12055 GBP pp
Grand Deluxe Suite Deck 6	£14625 GBP pp



The Small Cruise
Ship Collection

www.small-cruise-ships.com

01432 507 280 (within UK)

info@small-cruise-ships.com | small-cruise-ships.com