



The Small Cruise
Ship Collection

www.small-cruise-ships.com

small-cruise-ships.com

info@small-cruise-ships.com

**MOLUCCA ISLANDS, RAJA AMPAT AND THE
PHILIPPINES: IDYLLS ABOVE AND BELOW
THE WATER**

The unusual as a premiere: from lush jungle and secluded lagoons to fascinating cultures. This route reveals the mysteries of seldom-visited islands and every landing opens doors to new wonders of the Pacific.

The Small Cruise
Ship Collection

www.small-cruise-ships.com

01432 507 280 (within UK)

info@small-cruise-ships.com | small-cruise-ships.com

The Small Cruise Ship Collection

www.small-cruise-ships.com

small-cruise-ships.com

info@small-cruise-ships.com



ITINERARY

Day 1 Darwin/Australia, departure 24.00 hrs

Day 2 Relaxation at sea

Days 3 - 4 Molucca Islands/Indonesia (Kei Islands, Banda Islands)

The Moluccas are a vast archipelago in the eastern part of Indonesia. Their designation as "spice islands" dates back to their historical significance in the trade of nutmeg, cloves and pepper. An expedition area with volcanic landscapes, dense rainforests, secluded beaches and fascinating cultural diversity.

The Zodiacs are in their element here. They enable you to go

ashore to swim, snorkel or simply relax - for example, on the Kei Islands, a paradise in the south-eastern Moluccas. They captivate visitors with their white sandy beaches, turquoise waters and colourful coral reefs. In small villages, locals maintain traditions, music and dances - away from mass tourism.

Bandanaire, the main island of the Banda Islands, will enchant you with its blend of culture, history and natural beauty. Discover Fort Belgica and Fort Nassau from the Dutch colonial period in the 17th century with your experts. You can actively enjoy the island idyll by diving in colourful snorkelling areas and hiking to the Banda Api volcano, which towers over the island.

Days 5 - 9 Raja Ampat/Indonesia (Pulau Misool, Pulau Waigeo, Pulau Arborek, Pulau Playnemo)

In the Raja Ampat archipelago - with its approximately 1,800 islands - turquoise lagoons, impressive limestone cliffs and pristine beaches together form a natural paradise. A world rich in biodiversity. Thrilling expedition days on water and land await you here.

The excitement builds as you cross the emerald waters around Pulau Misool in the Zodiac. The dramatic karst formations of the island dominate the landscape. Untouched nature reveals itself on land, while colourful reefs pulsate vibrantly in the sea. Manta rays glide majestically through the clear water, creating a fascinating sight. A paradise where nature and underwater life come together in pristine beauty.

Pulau Waigeo is a living expedition dream, characterised by exotic nature and culture. The colourful underwater world bustles in shallow lagoons. Limestone cliffs rise out of the sea like

The Small Cruise Ship Collection

www.small-cruise-ships.com

01432 507 280 (within UK)

info@small-cruise-ships.com | small-cruise-ships.com



The Small Cruise Ship Collection

www.small-cruise-ships.com

small-cruise-ships.com

info@small-cruise-ships.com

sentinels. Mangrove forests resemble bizarre labyrinths. The largest island in the archipelago is renowned for its biodiversity in the dense rainforest. With a bit of luck, you may spot the rare red bird of paradise and other exotic species, on which your experts will share fascinating facts.

Pulau Arborek is small but full of life. Between clear water and rugged limestone islands lies a charming village built on wooden stilts. The close-knit community of residents invites you to engage in authentic exchanges with them. A house reef stretches directly from the jetty, which is ideal for snorkelling. Corals in every colour and vibrant fish make every moment unforgettable.

A perspective like no other opens up to you on Pulau Piaynemo. As you ascend to the viewing platform, the archipelago spreads out majestically before you, lined with iconic karst islands. Like jewels sparkling in the azure-blue ocean - a popular photo motif. Every glance reveals new details, and beneath the surface of the water, excellent snorkelling spots invite you to explore the colourful underwater world.

Day 10 Pulau Miangas/Talaud Islands/Indonesia

The mysterious Talaud Islands - an untouched paradise just waiting to be discovered - lie far away from the well-known travel routes in the northern part of Indonesia. Pulau Miangas enchants visitors with miles of snow-white beaches, turquoise-blue water and a tranquillity that is deeply relaxing. Here, time seems to pass more slowly and every moment becomes a precious experience. Whether actively snorkelling over colourful coral reefs or unwinding on the beach, the island offers the perfect blend of adventure and relaxation.

Days 11 - 12 Visayas/Philippines (Bucas Grande Island , Bohol)

The Visayas - an archipelago straight out of a picture book. Here, you can discover breathtaking landscapes, rare animal species, exotic plants and the vibrant culture of the islanders on your expedition.

Bucas Grande Island seems almost heavenly, and you can explore its beaches and sea caves by Zodiac. The coastal fringe of the hilly limestone island with mangrove forests transitions into a rainforest in the interior of the island. As well as exotic plants, your experts will direct your gaze to dozens of different species of dragonfly.

An unimaginable diversity is revealed on Bohol. The bizarre landscape is made up of more than a thousand little hills, known as the Chocolate Hills - the only place in the world you can see the phenomenon on this scale. The cones formed by the wind and weather look like oversized molehills. Your experts will shed light on their geological formation for you. In the traditional villages behind the green curtain of the jungle, some more interesting insights await. With a little luck, you might be able to see the tiny primates known as tarsiers along your discovery trail.

Day 13 Relaxation at sea

Day 14 Manila/Philippines, 08.00 - 18.00 hrs

In the Philippine metropolis of Manila, past and present merge to create a fascinating experience. Join your experts on a journey through Spanish colonial history: Intramuros, the historic old town with its mighty walls and churches, features an impressively preserved Spanish fortress from the 16th century. The National Museum also offers fascinating insights into the

The Small Cruise Ship Collection

www.small-cruise-ships.com

01432 507 280 (within UK)

info@small-cruise-ships.com | small-cruise-ships.com



The Small Cruise
Ship Collection

www.small-cruise-ships.com

small-cruise-ships.com

info@small-cruise-ships.com

history and culture of the country. In between, the vibrant city offers a diverse culinary scene that combines Asian and colonial influences. Fancy something out of the ordinary? Then enjoy delicacies of Filipino cuisine such as the national dish adobo.

Day 15 Relaxation at sea

Day 16 Basco/Philippines

Basco, the charming capital of the Batan Islands, is quite atypical for the Philippines. A place unlike anything you would expect from the tropics: pastures lined with green hedges and cows, small villages with churches and the dark-blue sea crashing against rugged cliffs. You could think you were in Ireland. The people here call themselves Ivatan and speak their own language. Their ancestors, Austronesian settlers, arrived around 4,000 years ago. In 1783, the Spanish incorporated the Batan Islands into their colonial empire. Climb the Naidi Hills with their iconic lighthouse and enjoy the view over endless expanses. Basco is not a place for rushing, but for discovery.

Day 17 Hualien/Taiwan, 08.00 - 18.00 hrs

What are your impressions of Taiwan? One thing is sure: It is not only the blend of tradition and modernity that will surprise you. With more than 260 peaks over 3,000 m (9,843 ft), Taiwan is almost reminiscent of the Alps. This is impressively shown on an excursion* to Taroko Gorge near Hualien - a natural wonder formed by the Liwu River. Suspension bridges, tunnels and waterfalls make every trail spectacular. The city of Hualien itself pulsates between relaxed coastal flair and urban life. The promenade along the Pacific is ideal for a relaxed stroll with views over the sea and mountains. Cafes and small craft shops characterise the scene, while colourful markets bring the region's culture to life. Enjoy the famous mochi sweets or

immerse yourself in the culinary diversity with fresh seafood and legendary street food.

Day 18 Keelung (Taipei)/Taiwan, arrival 07.00 hrs

Please Note:

Itineraries are subject to change.

The Small Cruise
Ship Collection

www.small-cruise-ships.com

01432 507 280 (within UK)

info@small-cruise-ships.com | small-cruise-ships.com



The Small Cruise Ship Collection

www.small-cruise-ships.com

small-cruise-ships.com

info@small-cruise-ships.com

YOUR SHIP: HANSEATIC INSPIRATION

YOUR SHIP: Hanseatic Inspiration

VESSEL TYPE:

LENGTH:

PASSENGER CAPACITY:

BUILT/REFURBISHED:

The HANSEATIC inspiration, a small, state-of-the-art expedition ship with a maximum of 230 guests, offers a perfect blend of adventure and comfort for explorers seeking to uncover the world's wonders. As an international vessel conducting cruises in both English and German, it brings over 30 years of expertise from a market leader in German-speaking countries to every journey. Each expedition is a masterpiece, passionately crafted to reveal far-flung worlds--be it icy realms, tropical paradises, wildlife havens, or cultural gems--making every voyage a unique discovery aboard this exceptional ship. Features of all cabins and suites An ocean view with even more: exclusively outside cabins and suites, almost all with balconies or French balconies Spaciously designed - enjoy a relaxing stay in rooms from 21 m²/226 ft² up to 71 m²/764 ft² in size Exceptionally equipped - for example, with binoculars, Nordic Walking poles, air conditioning, coffee machine and mini bar (free of charge) and 24-hour cabin service Separable beds Rain shower and heated wall in bathroom (e.g. for towels and wet parkas) Extensive infotainment with live broadcast and recordings of expert presentations, forwardview camera, navigation chart, films and much more Restaurants Aboard the HANSEATIC inspiration, a

new kind of freedom blends adventure and pleasure with a culinary journey across three exceptional restaurants. The spacious HANSEATIC Restaurant offers flexible mealtimes and a free choice of seating, serving a daily-changing menu of global flavors inspired by local specialties, paired with fine wines and supported by attentive 24-hour cabin service. At the Lido Restaurant, guests can savor breakfast under the open sky or enjoy a perfectly grilled steak from the outdoor barbecue, complete with panoramic views and an open show kitchen. The specialty restaurant Nikkei fuses fine Japanese creations with modern Peruvian cuisine, delivering a unique dining experience that elevates exploration to new heights--all while bars in the Observation Lounge and HanseAtrium offer favorite drinks against stunning backdrops, from Nordic fjords to icy Antarctic vistas. Fitness and Wellness On the HANSEATIC inspiration, an extraordinary time out awaits after thrilling Zodiac rides, challenging hikes, or Arctic adventures. Unwind in the Ocean Spa, where a Finnish sauna with stunning ocean views, a gentle steam sauna, an ice fountain, and a relaxation room rejuvenate your senses, complemented by professional massages, cosmetic treatments, and eco-friendly products made from natural, vegan ingredients. Stay active in the 100 m² fitness room or separate course room--both with ocean vistas--guided by a fitness coach offering personalized advice and a variety of courses, either indoors or on deck. The pool area, with its flexible canopy, invites relaxation year-round, featuring water loungers, a whirlpool, and a bar, ensuring a perfect blend of indulgence and revitalization against the backdrop of the open sea. Knowledge Shore excursions and Zodiac rides come alive

The Small Cruise Ship Collection

www.small-cruise-ships.com

01432 507 280 (within UK)

info@small-cruise-ships.com | small-cruise-ships.com



The Small Cruise
Ship Collection

www.small-cruise-ships.com

small-cruise-ships.com

info@small-cruise-ships.com

with deeper context through fascinating presentations in the HanseAtrium, a high-tech lounge where experts share daily precasts and recaps, doubling as an atmospheric evening bar for films and discussions. The Ocean Academy enhances the journey with a Study Wall and interactive poster of scientific insights, microscopes for exploring hidden wonders alongside experts, and Study Seats--with swivel touchscreens--for personal dives into science. Supported by travel diaries and destination videos, this immersive experience broadens horizons with cutting-edge tools and



expertise.



The Small Cruise
Ship Collection

www.small-cruise-ships.com

01432 507 280 (within UK)

info@small-cruise-ships.com | small-cruise-ships.com



The Small Cruise
Ship Collection

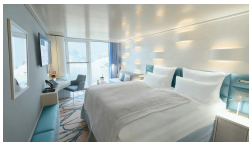
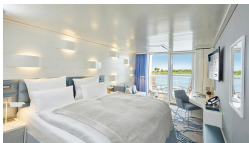
www.small-cruise-ships.com

small-cruise-ships.com

info@small-cruise-ships.com

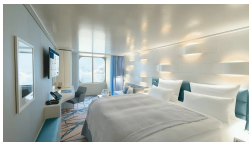
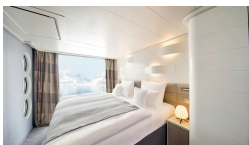
INSIDE YOUR SHIP

Balcony Cabin. From



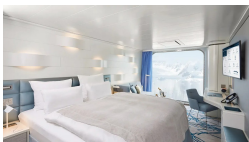
French Balcony Cabin. From

Junior Suite. From



Outside Cabin. From

Panoramic Cabin. From





The Small Cruise
Ship Collection

www.small-cruise-ships.com

small-cruise-ships.com

info@small-cruise-ships.com

PRICING

22-May-2028 to 08-Jun-2028

Outside Cabin. From	£9545 GBP pp
Panoramic Cabin. From	£10085 GBP pp
French Balcony Cabin. From	£11199 GBP pp
Balcony Cabin. From	£12129 GBP pp
Junior Suite. From	£16895 GBP pp