

# The Small Cruise Ship Collection

www.small-cruise-ships.com

small-cruise-ships.com

info@small-cruise-ships.com

## MEDITERRANEAN ISLAND HOPPING LUXURY CRUISE

From the Balearic Islands to Corsica, the Mediterranean islands are particularly beautiful in spring. Mild temperatures invite you to spend lots of time outdoors - whether in cities steeped in history or nature blessed with radiant sunshine.



### ITINERARY

Day 1 Palma de Mallorca/Mallorca/Balearic Islands/Spain, departure 20.00 hrs

Palma de Mallorca, the capital of the Balearic Islands, has numerous highlights on offer. Take a look at the majestic La Seu cathedral and stroll through the charming old town with its narrow lanes and historic buildings. Visit Bellver Castle with its panoramic views over the city. Or relax on idyllic beaches such as Playa de Palma or Cala Major. Take a walk along the Passeig des Born promenade and discover the lively shopping street

The Small Cruise Ship Collection

www.small-cruise-ships.com

01432 507 280 (within UK)

info@small-cruise-ships.com | small-cruise-ships.com



# The Small Cruise Ship Collection

[www.small-cruise-ships.com](http://www.small-cruise-ships.com)

[small-cruise-ships.com](http://small-cruise-ships.com)

[info@small-cruise-ships.com](mailto:info@small-cruise-ships.com)

Avenida Jaume III. An insider tip is Santa Catalina neighbourhood with its trendy cafes, bars and restaurants, where you can enjoy the local cuisine and nightlife.

#### Day 2 Mahon/Menorca/Balearic Islands/Spain, 08.00 - 18.00 hrs

Forests, vineyards, rolling hills and unspoilt bays for swimming: the natural beauty of Mahon, the capital of Menorca, is captivating. White houses cling to the hillsides above the deep-blue natural harbour - one of the biggest in the world. The scent of tapas wafts through the narrow streets of the old town and people's laughter rings out from the little bars and market places. The fortress of La Mola stands guard over the harbour like a silent witness to the past. The coastline is inviting with its crystal-clear waters for swimming and snorkelling, while the millennia-old caves at Cales Coves will enchant you with their fascinating prehistoric history of the island.

#### Day 3 Relaxation at sea

#### Day 4 Trapani/Sicily/Italy, 08.00 - 18.00 hrs

Located at the westernmost tip of Sicily, Trapani stretches out on a narrow promontory between the Tyrrhenian Sea and the Mediterranean. Its historic centre, whose origins date back to Arab times, boasts a charming mix of Renaissance, baroque and classicist elements. A relaxed stroll along the waterfront and the old harbour provides impressive insights into the maritime past of the city, which was once called Drepanon or "crescent moon" - a reference to the characteristic shape of its coastline.

#### Day 5 Lipari/Lipari Islands/Italy, 08.00 - 18.00 hrs

Its volcanic origins shape the impressive landscape of the largest of the Aeolian Islands - Lipari is a picture of pumice, obsidian and imposing volcanic peaks. The main town, also

called Lipari, has two ports: Marina Lunga in the north for large ferries and Marina Corta in the south, which is at the heart of the busy town. The old town with its historic buildings and narrow streets is ideal for a stroll. A particular highlight is the Quattrocchi viewpoint, from where you can enjoy breathtaking views over the highly active volcanic island of Vulcano and the deep-blue sea.

#### Day 6 Capri/Italy, 08.00 - 23.00 hrs

For centuries, Capri has attracted the rich and famous with its history and beguiling beauty. Emperor Tiberius made the island his seat of government in the year AD 26, and it has remained a popular holiday destination to this day. The island is made up of the charming communities of Capri and Anacapri, each of which has its own unique character. From the centre of Anacapri, a cable car takes you up to Monte Solaro at 589 m (1,932 ft) above sea level. From here, you can enjoy breathtaking views of the azure-blue sea, the mysterious caves and the jagged cliffs of the island. Capri is captivating with its blend of nature, culture and exclusive atmosphere.

#### Day 7 Ponza/Pontinian Islands/Italy, 07.00 - 19.00 hrs

Turquoise caves, steep cliffs and idyllic beaches - the scenic beauty of Ponza, the largest of the Pontinian Islands, is truly eye-catching. According to legend, Odysseus and his companions were stranded here, and the Circe cave brings the island's ancient past back to life. The romantic main town with its pastel-coloured houses and charming bars exudes a relaxed atmosphere, making it an inviting place to watch the comings and goings of the yachts and fishing boats in the harbour. Ponza is a perfect place to enjoy the magic of Italy's coastal scenery.

#### Day 8 Relaxation at sea

The Small Cruise Ship Collection

[www.small-cruise-ships.com](http://www.small-cruise-ships.com)

01432 507 280 (within UK)

[info@small-cruise-ships.com](mailto:info@small-cruise-ships.com) | [small-cruise-ships.com](http://small-cruise-ships.com)



## The Small Cruise Ship Collection

[www.small-cruise-ships.com](http://www.small-cruise-ships.com)

[small-cruise-ships.com](http://small-cruise-ships.com)

[info@small-cruise-ships.com](mailto:info@small-cruise-ships.com)

### Day 9 Portoferraio/Elba/Italy, 07.00 – 23.00 hrs

Portoferraio on the Italian island of Elba has a long history dating back to the Roman Empire, when iron ore mining brought riches to the town. Two of the splendid Roman villas can still be visited today. Portoferraio owes much of its fame to Napoleon Bonaparte, who made the capital of Elba his winter residence in 1814. However, it's not just history that impresses here: the island in the Tuscan Archipelago also appeals thanks to its tropical beaches, crystal-clear waters and dramatic coastal landscapes, part of Europe's largest protected marine reserve, the Parco Nazionale dell'Arcipelago Toscano.

### Day 10 Calvi/Corsica/France, 08.00 – 18.00 hrs

The impressive citadel, the proud landmark that towers over the Gulf of Calvi, stands out from afar. Situated on a rocky outcrop, the fortress has withstood numerous attacks over the centuries and provides stunning views of the Cinto massif with Corsica's highest mountain. Behind the mighty walls, the charming old town unfolds with its winding lanes and historic buildings that invite you to admire and explore. Influenced by the Genoese between the 12th and 15th centuries, Calvi remained loyal to them during the Corsican struggle for freedom, as the motto "Civitas Calvi semper fidelis" ("The city of Calvi is always loyal") attests. The mix of history, nature and culture makes Calvi a fascinating holiday destination on Corsica.

### Day 11 Nice/France, arrival 06.00 hrs

Please note:

Itineraries are subject to change.

The Small Cruise Ship Collection

[www.small-cruise-ships.com](http://www.small-cruise-ships.com)

**01432 507 280** (within UK)

[info@small-cruise-ships.com](mailto:info@small-cruise-ships.com) | [small-cruise-ships.com](http://small-cruise-ships.com)

# The Small Cruise Ship Collection

[www.small-cruise-ships.com](http://www.small-cruise-ships.com)

[small-cruise-ships.com](http://small-cruise-ships.com)

[info@small-cruise-ships.com](mailto:info@small-cruise-ships.com)

## YOUR SHIP: EUROPA

**YOUR SHIP:** Europa

**VESSEL TYPE:**

**LENGTH:**

**PASSENGER CAPACITY:**

**BUILT/REFURBISHED:**

Extensive space for a maximum of 400 guests A crew-to-guest ratio of almost one to one Outside suites only, most with a veranda Five restaurants for the ultimate in culinary indulgence - including THE GLOBE by three-star chef Kevin Fehling Top-class entertainment: experience international artists and experts live on board EUROPA Refresh: new fitness and wellness concepts for even more well-being MS EUROPA is an award-winning luxury cruise ship renowned for setting global standards in refined small-ship cruising. Accommodating a maximum of just 400 guests, the ship offers an intimate and highly personalised experience, supported by an almost one-to-one crew-to-guest ratio. Designed around the concept of casual luxury, EUROPA combines spacious surroundings, attentive service, and elegant all-suite accommodation, with all suites featuring ocean views and most offering private verandas. Onboard, guests can enjoy five exceptional restaurants, including fine dining concepts created in collaboration with acclaimed chefs, alongside world-class entertainment, wellness facilities, and thoughtfully curated enrichment experiences. The ship's smaller size allows access to unique itineraries and exclusive ports beyond the reach of larger vessels, while recent EUROPA Refresh

enhancements have introduced updated fitness and wellness concepts for an even more elevated onboard experience. Blending sophistication, comfort, and flexibility, MS EUROPA delivers a truly premium voyage to destinations



worldwide.

The Small Cruise Ship Collection  
[www.small-cruise-ships.com](http://www.small-cruise-ships.com)

01432 507 280 (within UK)

[info@small-cruise-ships.com](mailto:info@small-cruise-ships.com) | [small-cruise-ships.com](http://small-cruise-ships.com)

# The Small Cruise Ship Collection

[www.small-cruise-ships.com](http://www.small-cruise-ships.com)

[small-cruise-ships.com](http://small-cruise-ships.com)

[info@small-cruise-ships.com](mailto:info@small-cruise-ships.com)

## INSIDE YOUR SHIP

Penthouse Deluxe Suite

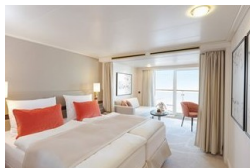
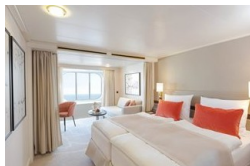


SPA Suite



Suite with panorama window

Veranda Suite Cat. 4-5





# The Small Cruise Ship Collection

[www.small-cruise-ships.com](http://www.small-cruise-ships.com)

[small-cruise-ships.com](http://small-cruise-ships.com)

[info@small-cruise-ships.com](mailto:info@small-cruise-ships.com)

## PRICING

17-May-2027 to 24-May-2027

Suite with panorama window	£5299 GBP pp
Veranda Suite Cat. 4-5	£6215 GBP pp
Veranda Suite Cat. 6-7	£7605 GBP pp
SPA Suite	£8215 GBP pp
Penthouse Deluxe Suite	£12739 GBP pp