



The Small Cruise Ship Collection

www.small-cruise-ships.com

small-cruise-ships.com

info@small-cruise-ships.com

MAYAN LEGENDS AND SOUTHERN CHARM SMALL SHIP CRUISE

Picturesque landscapes, coral reefs and Mayan culture set the tone on this new route through the Gulf of Mexico. Let yourself be carried away by the lightness and rhythm of jazz.



ITINERARY

Day 1 Miami/Florida/USA, departure 24.00 hrs

Day 2 North Bimini/Bimini Islands/Bahamas, 07.00 - 18.00 hrs

Despite its small size, North Bimini offers plenty of adventure: while everyday life in the beach bars of Alice Town is relaxed, the bright-blue lagoons invite you to snorkel or dive around sunken shipwrecks. Sun worshippers and anglers will also find their island paradise on the dream beaches under palm trees or enjoy Bahamian seafood fresh from the ocean. Fancy some



01432 507 280 (within UK)

info@small-cruise-ships.com | small-cruise-ships.com



The Small Cruise Ship Collection

www.small-cruise-ships.com



small-cruise-ships.com

info@small-cruise-ships.com

culture? Then the exhibitions at the Bimini Museum are well worth a visit. But the most beautiful pictures are painted by nature: experiencing the sunset on board against the endless blue horizon is unforgettable.

Days 3 - 4 Relaxation at sea

Day 5 Puerto Costa Maya/Mexico, 08.00 - 18.00 hrs

Puerto Costa Maya is a wonderful starting point for exploring the coastal village of Mahahual with its relaxed atmosphere and colourful houses. Just a few kilometres inland, surrounded by tropical nature, you can discover fascinating evidence of Mayan culture, such as the well-preserved temple complexes of Chacchoben and Kohunlich with its famous mask reliefs. The coast beckons with fine white sandy beaches and invites you to linger under palm trees and at beach bars - perfect conditions for snorkelling or for boat trips along the coral reef.

Day 6 San Miguel de Cozumel/Cozumel/Mexico, 07.00 - 24.00 hrs

Cozumel lies off the Yucatan peninsula lies - a paradise for beach lovers, divers and fans of culture alike. The island's dream beaches and colourful underwater world were made famous in the 1960s when Jacques-Yves Cousteau explored its fascinating coral reefs. Even today, many follow in his "footsteps" underwater and discover the breathtaking vistas below the surface of the water that make Cozumel a popular destination for divers. But the island also offers cultural highlights: the Mayan ruins of San Gervasio and El Cedral, dedicated to the goddess Ixchel, transport visitors to the mysterious world of this lost civilisation. The long lay time extends your impressions into the evening.

Day 7 Relaxation at sea

Day 8 Progreso/Mexico, 07.00 - 18.00 hrs

The port city of Progreso is located in the north-west of the Yucatan Peninsula, formerly known as Mayab - "Land of the Maya". From the fourth to the tenth centuries, it was the centre of indigenous Mayan culture, as countless archaeological sites prove. Highlights such as the extensive complex of Uxmal bear witness to the former advanced civilisation. Merida is also enchanting, with its pastel-coloured facades, markets and colonial flair providing the backdrop for a relaxed stroll through the city. Off the beaten track, Yucatan surprises with quiet villages, mysterious cenotes and a natural landscape that delights with flamingos and wild orchids.

Day 9 Relaxation at sea

Day 10 Galveston/Texas/USA, 07.00 - 19.00 hrs

Galveston, an island city on the Texas Gulf Coast, combines nostalgic charm with a laid-back coastal atmosphere. The well-preserved old town with its magnificent Victorian architecture and many small boutiques, cafes and galleries invites you to stroll around. The sunny climate can be enjoyed on the expansive beaches, while Galveston Island State Park delights nature lovers with its dunes, salt marshes and hiking trails. The city's lively cultural scene also shapes its character - from museums and festivals to open-air music.

Day 11 Relaxation at sea

Day 12 New Orleans/Louisiana/USA, arrival 08.00 hrs

In New Orleans, "The Big Easy", cultures, sounds and flavours combine to create a unique atmosphere. Over centuries, Creole culture has developed here, a lively mix of French, Spanish, African and Caribbean influences. This diversity still



The Small Cruise Ship Collection

www.small-cruise-ships.com

01432 507 280 (within UK)

info@small-cruise-ships.com | small-cruise-ships.com



characterises the famous spicy cuisine today. The first jazz sounds once rang out from the streets and clubs of the city, making music history. In addition to great musicians, New Orleans also inspired writers such as Truman Capote, William Faulkner and Tennessee Williams. A stroll through the historic French Quarter with its delicate wrought-iron balconies and pastel-coloured facades reveals what is arguably the most beautiful architecture in the United States. The Garden District, with its magnificent southern-style villas and moss-covered oak trees, also seems like something out of another era. The city unfolds its special magic in the evening - when the French Quarter is bathed in golden light, jazz flows from open doors and life pulsates to the fullest in bars, clubs and street art.

Day 13 New Orleans/Louisiana/USA, departure 18.00 hrs

Days 14 - 15 Relaxation at sea

Day 16 Miami/Florida/USA, arrival 05.00 hrs

Please Note:

* The shore activities are not included in the cruise price and are in the planning stage. Subject to change.



The Small Cruise
Ship Collection

www.small-cruise-ships.com



small-cruise-ships.com

info@small-cruise-ships.com

YOUR SHIP: EUROPA

YOUR SHIP: Europa

VESSEL TYPE:

LENGTH:

PASSENGER CAPACITY:

BUILT/REFURBISHED:

Extensive space for a maximum of 400 guests A crew-to-guest ratio of almost one to one Outside suites only, most with a veranda Five restaurants for the ultimate in culinary indulgence - including THE GLOBE by three-star chef Kevin Fehling Top-class entertainment: experience international artists and experts live on board EUROPA Refresh: new fitness and wellness concepts for even more well-being MS EUROPA is an award-winning luxury cruise ship renowned for setting global standards in refined small-ship cruising. Accommodating a maximum of just 400 guests, the ship offers an intimate and highly personalised experience, supported by an almost one-to-one crew-to-guest ratio. Designed around the concept of casual luxury, EUROPA combines spacious surroundings, attentive service, and elegant all-suite accommodation, with all suites featuring ocean views and most offering private verandas. Onboard, guests can enjoy five exceptional restaurants, including fine dining concepts created in collaboration with acclaimed chefs, alongside world-class entertainment, wellness facilities, and thoughtfully curated enrichment experiences. The ship's smaller size allows access to unique itineraries and exclusive ports beyond the reach of larger vessels, while recent EUROPA Refresh

enhancements have introduced updated fitness and wellness concepts for an even more elevated onboard experience. Blending sophistication, comfort, and flexibility, MS EUROPA delivers a truly premium voyage to destinations



worldwide.

The Small Cruise
Ship Collection

www.small-cruise-ships.com

01432 507 280 (within UK)

info@small-cruise-ships.com | small-cruise-ships.com



The Small Cruise
Ship Collection

www.small-cruise-ships.com



small-cruise-ships.com

info@small-cruise-ships.com

INSIDE YOUR SHIP

Penthouse Deluxe Suite



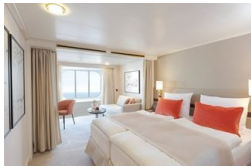
Penthouse Grand Suite



SPA Suite



Suite with panorama window



Veranda Suite Cat. 4-5

Veranda Suite Cat. 6-7



The Small Cruise
Ship Collection

www.small-cruise-ships.com



small-cruise-ships.com

info@small-cruise-ships.com

PRICING

18-Nov-2028 to 03-Dec-2028

Suite with panorama window	£5675 GBP pp
Veranda Suite Cat. 4-5	£7909 GBP pp
Veranda Suite Cat. 6-7	£10285 GBP pp
SPA Suite	£11085 GBP pp
Penthouse Deluxe Suite	£17679 GBP pp
Penthouse Grand Suite	£28049 GBP pp



The Small Cruise
Ship Collection

www.small-cruise-ships.com

01432 507 280 (within UK)

info@small-cruise-ships.com | small-cruise-ships.com