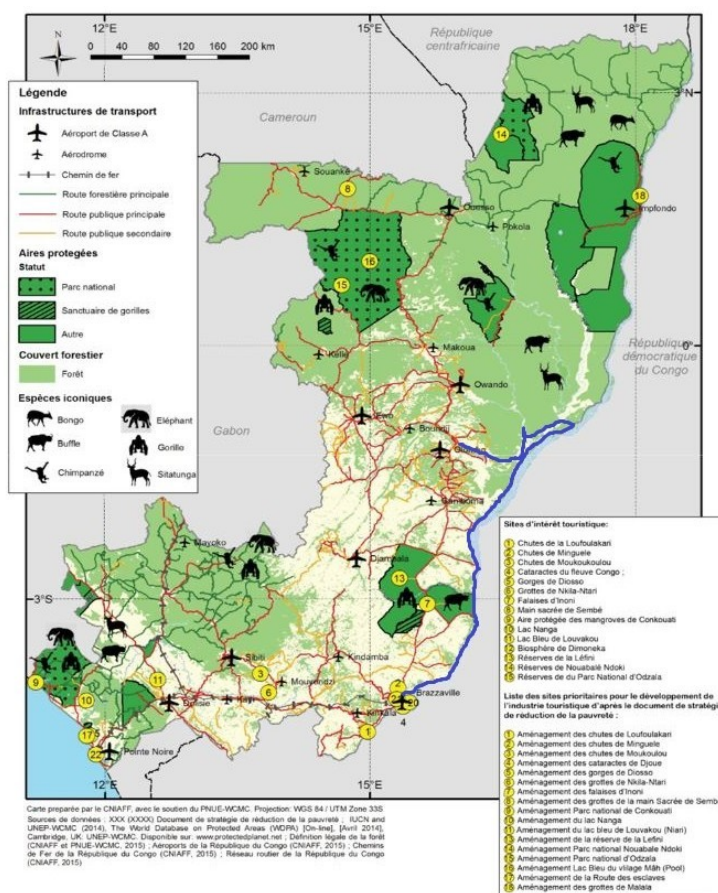




## MAJESTIC CONGO: 8-NIGHT RIVER CRUISE

The Congo Basin is the second largest forest massif in the world. It abounds in exceptional flora and fauna. Little known to the public, this region deserves more recognition. It's a gigantic territory of forests and rivers, sparsely populated. We invite you to enter the heart of Central Africa on the Congo and Alima rivers. Our cruises allow you to discover the peoples and the sublime environment.



### ITINERARY

Day 1 Arrival in Brazzaville.



## The Small Cruise Ship Collection

[www.small-cruise-ships.com](http://www.small-cruise-ships.com)

[small-cruise-ships.com](http://small-cruise-ships.com)

[info@small-cruise-ships.com](mailto:info@small-cruise-ships.com)

Arrival in Brazzaville. Our guide will be waiting for you at the airport to transfer you to the ship.

Night on board.

### Day 2 – Visit of Brazzaville and beginning of the cruise

In the morning, we set out to explore the city, The Congo Basin Museum, the Poto Poto School, the Cathedral and we end with a meeting with "La Sape" - Society of Ambiance-Makers and Elegant People. Then begin the long journey up the Congo River through a landscape of green hills. We take advantage of the first miles to get to know our guides and learn about the Congo.

Night on board.

### Day 3 – The Téké Kingdom and Kebe Kebe ritual

In the morning, we visit Ngabe, one of the ancient capitals of the Teke kingdom. We ascend through the village to visit the current queen. As the guardian of "Nkwembali," the spiritual deity of the Bateke, she is the person authorised to transfer power to the new king, the Makoko. She holds significant influence in the Teke kingdom, one of the powerful kingdoms in the country.

After our lunch on board we return to the village to witness a

kebe kebe ritual. It refers to a dance and an initiatory society of the Congo. The ordinary form of the kebe-kebe resembles whirling dervishes, wrapped in raffia robes set with feathers of various birds, and manipulating a puppet which generally represents a painted Koyo head exhibiting the particular scarifications of the ethnic group.

In the afternoon, we reach the estuary of the Lefini River, a popular spot for birds and hippos depending on the season. We leave the ship on launch boats to observe the majestic mammals. We return to the ship for lunch and continue our ascent.

Night on board.

### Day 4 – The thousands of islands of the Congo River and the "whaling ships"

The Congo River widens considerably (more than 10 km) and a labyrinth of islands is formed. Fishing villages are established there during the dry season. In the estuary of N'keni, we will go for birding in the morning (bee eaters, weavers, egrets, kites).

From the observation deck, we watch the fascinating boats, whaleboats and long flat-bottomed transport barges that are pushed along the Congo River. Travelling for weeks at a time and measuring up to two hundred metres in length, these floating villages transport goods, people and livestock from town to town. They play a crucial role in the economy and life of the Congo River communities. If the weather permits, we will take





the opportunity to bivouac on a sandbank in the middle of the myriad of islands.

Night on board.

**Day 5 - The city of Mossaka and its famous salted fish and the village of Likendze**

In the morning we set out to explore the city of Mossaka. Led by our local guide Jean de Dieu, we discover the remnants of the colonial era, we visit the bustling local market where we'll immerse ourselves in the daily life of the local people. Our visit takes us through the alleys where salted fish dryers are installed. This traditional technique of preserving fish has made Mossaka famous throughout the region. We also discover the production of palm wine and meet a potter. We return to the ship for lunch and continue our navigation to Likendze.

At the village of Likendze on the Sangha River, we learn different fishing techniques such as cast net fishing, trap fishing, and net fishing. Those interested can even try their hand at line fishing.

Night on board.

**Day 6 - The Alima river and the Moyo people**

In the morning, we leave on launch boats to observe the hippos

who live a few kilometres north of the village and we'll go for a birding in search of the emblematic birds of the region such as ospreys, palm-nut vultures, African fish eagles, hamerkops, cormorans, kingfishers, weavers, ibis, grey herons, storks, egrets, hornbills, pied crows, Braza's Martin and the elusive turaco. Back on the ship, we navigate towards the Alima River. This beautiful narrow winding river is surrounded by swamp forests. We finish the day in the village of Bonda where we meet the Moyo People. They are our guides to discover the flooded forest. Following the season, we discover the forest by canoe or on foot. In the evening, the Moyo people perform a traditional dance on the bank of the river. At night, we will navigate in a 900 m loop to listen to the forest and perhaps, spot the shining eyes of the crocodiles.

Night on board.

**Day 7 - The traditional Medicine**

We navigate on the Alima River. Passing the many bends of the river, along the banks we can see many charming raffia villages. Later on, we reach the village of Mondongo. This village, also made primarily using raffia, is home to Moyo People. We met a local guide who explains the traditional pharmacopoeia and the preparation of remedies. The swamp forest is teeming with plants the villagers use for traditional medicine to treat diseases and injuries.

In the afternoon, we reach a small tributary with black water



The Small Cruise  
Ship Collection

[www.small-cruise-ships.com](http://www.small-cruise-ships.com)

[small-cruise-ships.com](http://small-cruise-ships.com)

[info@small-cruise-ships.com](mailto:info@small-cruise-ships.com)

where the locals call crocodiles to hunt them.

Night on board.

Day 8 – Transfer to Brazzaville and visit of Lesio Louna réserve

We disembark for our return trip to Lesio Louna reserve by car.

Founded in 1999 the Aspinall Foundation, and part of the Congolese gorilla protection program (PPG) Lesio Louna aims to rescue gorillas from wildlife trafficking or zoos which cannot tend to them and reintroduce them into their natural environment. On board a motorboat, we set off on the Louna River, which winds through the forest, with the keepers to reach the islands where the gorillas live during the period of adaptation to their new life. As soon as they are able to feed themselves, they will then be released into the Park. After a memorable time close to these fascinating primates, we return to Brazzaville by car

Dinner

Night at the hotel 5 stars in Brazzaville

Day 9 – Return flight

Transfer to the airport and fly out or extension to discover :

The coastal city of Pointe-Noire and visit the chimpanzee

sanctuary of Tchimpounga in Kouilou river(2-3 nights) and relax at Bamboo beach on the seaside.

3 nights extension to the Bai d'Imbalanga in the Odzala-Kokoua National Park (From Oyo)

2 nights extension in DRC for Bonobos tracking (endemic species from DRC)

4 nights in Dzanga sangha extension in Doli Lodge. Possible departure to Bangui.

Please note:

Itineraries are subject to change.



The Small Cruise  
Ship Collection

[www.small-cruise-ships.com](http://www.small-cruise-ships.com)

**01432 507 280** (within UK)

[info@small-cruise-ships.com](mailto:info@small-cruise-ships.com) | [small-cruise-ships.com](http://small-cruise-ships.com)





## The Small Cruise Ship Collection

[www.small-cruise-ships.com](http://www.small-cruise-ships.com)

[small-cruise-ships.com](http://small-cruise-ships.com)

[info@small-cruise-ships.com](mailto:info@small-cruise-ships.com)

## YOUR SHIP: PRINCESS NGALESSA

**YOUR SHIP:** Princess Ngalessa

**VESSEL TYPE:**

**LENGTH:**

**PASSENGER CAPACITY:**

**BUILT/REFURBISHED:**

The ship was built in a Belgian run shipyard in Kinshasa in 2017. It takes the form of the passenger ships that have for decades transported passengers on the Congo River and its tributaries between the different capitals of Central Africa. With a robust steel construction, she is powered by two new-generation 380 HP Caterpillar engines, thus reducing noise pollution and fuel consumption. Its draft of 90 centimeters allows it to navigate easily on shallow rivers. In 2022/2023, she was refitted to launch the first 4 safari cruises in the heart of one of the most mysterious forests in the world, the Congo Basin forest. Its renovation into a comfortable 4-star Boutique Hotel Ship launches a new era for the development of sustainable tourism in the Republic of Congo (Congo Brazzaville). In June 2023 she began the first cruises on the Congo and Sangha rivers, thus reviving the long tradition of river navigation in the Congo. ON BOARD LIVING AND SOCIAL AREAS :600 m<sup>2</sup> of common areas Dining room Indoor bar and lounge Outdoor lounge Outdoor jacuzzi Massage Room Observation Deck WORLD CLASS DINING PROGRAM A culinary experience nourished by African and European influences A menu specially prepared by a French Chef rewarded for his work with a Michelin

star in 2021 Local products and fine wine. LAUNCH BOATS FOR SHORE EXCURSIONS Two auxiliary aluminum launch boats equipped with four-stroke low emission engines. Each boat has a capacity of 15 passengers. Kayaks for two people Accommodation Passengers are accommodated in 14 Design cabins across three decks. Owner's Suite 35 m<sup>2</sup>. Observation deck. Private balcony (9m<sup>2</sup>) : Three windows, armchair, writing desk and chair, two bedside tables, sofa, and a closet. Bathroom. Air-conditioning. 1 cabin with two single beds that can convert to a queen. 1 cabin with one queen bed. (401, 402) Forward Master Suite 23 m<sup>2</sup>. Second Deck Forward. Public balcony : Four windows, armchair, writing desk and chair, two bedside tables, and a closet. Bathroom. Air-conditioning. 2 cabins with queen beds. (201, 202) Master Suite 27 m<sup>2</sup>. Second Deck. Public balcony : Three windows, armchair, writing desk and chair, two bedside tables, sofa, and a closet. Bathroom. Air-conditioning. 1 cabin with two single beds that can convert to a queen. 1 cabin with one queen bed. (203, 204) Deluxe Suite 18 m<sup>2</sup>. Second Deck. Public balcony : Two windows, armchair, writing desk and chair, two bedside tables, and a closet. Bathroom. Air-conditioning. 2 cabins with two single beds that can convert to a queen. 4 cabins with queen beds. (205, 206, 207, 208, 209, 210) Classic Cabin 12 m<sup>2</sup>. First Deck. Public balcony : One window, armchair and a closet. Bathroom. Air-conditioning. 2 cabins with two single beds

The Small Cruise Ship Collection  
[www.small-cruise-ships.com](http://www.small-cruise-ships.com)

01432 507 280 (within UK)

[info@small-cruise-ships.com](mailto:info@small-cruise-ships.com) | [small-cruise-ships.com](http://small-cruise-ships.com)



# The Small Cruise Ship Collection

[www.small-cruise-ships.com](http://www.small-cruise-ships.com)



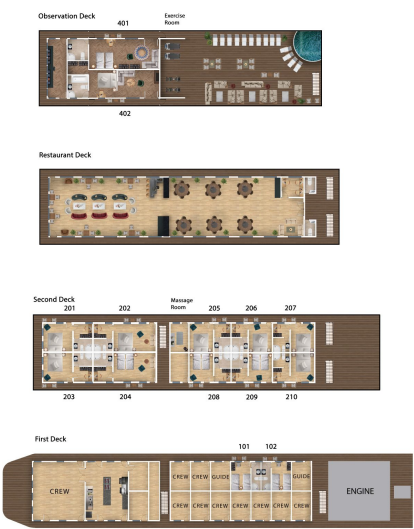
[small-cruise-ships.com](http://small-cruise-ships.com)[info@small-cruise-ships.com](mailto:info@small-cruise-ships.com)



(101, 102)



# INSIDE YOUR SHIP

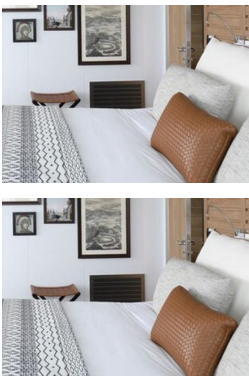


Deluxe Suite



Forward Master Suite

Forward Superior Suite



Master Suite



The Small Cruise  
Ship Collection

www.small-cruise-ships.com

small-cruise-ships.com

info@small-cruise-ships.com

## PRICING

### 01-Apr-2026 to 09-Apr-2026

Deluxe Suite	£3889 GBP pp
Master Suite	£4208 GBP pp
Forward Master Suite	£4208 GBP pp
Forward Superior Suite	£4654 GBP pp
Owner's Suite	£5036 GBP pp

### 22-Aug-2026 to 30-Aug-2026

Deluxe Suite	£3889 GBP pp
Forward Master Suite	£4208 GBP pp
Master Suite	£4208 GBP pp
Forward Superior Suite	£4654 GBP pp
Owner's Suite	£5036 GBP pp

### 07-Apr-2026 to 15-Apr-2026

Deluxe Suite	£3889 GBP pp
Forward Master Suite	£4208 GBP pp
Master Suite	£4208 GBP pp
Forward Superior Suite	£4654 GBP pp
Owner's Suite	£5036 GBP pp

### 29-Aug-2026 to 06-Sep-2026

Deluxe Suite	£3889 GBP pp
Forward Master Suite	£4208 GBP pp
Master Suite	£4208 GBP pp
Forward Superior Suite	£4654 GBP pp
Owner's Suite	£5036 GBP pp

### 18-Apr-2026 to 26-Apr-2026

Deluxe Suite	£3889 GBP pp
Master Suite	£4208 GBP pp
Forward Master Suite	£4208 GBP pp
Forward Superior Suite	£4654 GBP pp
Owner's Suite	£5036 GBP pp

### 05-Jan-2027 to 13-Jan-2027

Deluxe Suite	£3889 GBP pp
Master Suite	£4208 GBP pp
Forward Master Suite	£4208 GBP pp
Forward Superior Suite	£4654 GBP pp
Owner's Suite	£5036 GBP pp

### 24-Apr-2026 to 02-May-2026

Deluxe Suite	£3889 GBP pp
Forward Master Suite	£4208 GBP pp
Master Suite	£4208 GBP pp
Forward Superior Suite	£4654 GBP pp
Owner's Suite	£5036 GBP pp



The Small Cruise  
Ship Collection

www.small-cruise-ships.com

01432 507 280 (within UK)

info@small-cruise-ships.com | small-cruise-ships.com