

The Small Cruise Ship Collection

www.small-cruise-ships.com

small-cruise-ships.com

info@small-cruise-ships.com

MADEIRAN MARVELS AND THE IBERIAN PENINSULA CRUISE

A colourful mix of idyllic and vibrant coastal towns await you along this diverse route. Experience the flair of Madeira's capital Funchal as well as Palma de Mallorca and stroll through Valencia and along Portimao's beaches in mild temperatures.



ITINERARY

Day 1 Funchal/Madeira/Portugal, departure 24.00 hrs

Funchal, the picturesque capital of Madeira, boasts fascinating geology and breathtaking nature. Highlights include the Pico do Arieiro, an impressive summit with spectacular views, the Madeira Botanical Garden with its diverse flora, and the impressive Cabo Girao, one of the highest cliffs in Europe. Explore the famous levadas or irrigation channels on hikes and discover the rich flora and fauna. Immerse yourself in the lively atmosphere of the Mercado dos Lavradores, a traditional

The Small Cruise Ship Collection

www.small-cruise-ships.com

01432 507 280 (within UK)

info@small-cruise-ships.com | small-cruise-ships.com



The Small Cruise Ship Collection

www.small-cruise-ships.com

small-cruise-ships.com

info@small-cruise-ships.com

market, and enjoy local delicacies.

Day 2 Porto Santo/Madeira/Portugal, 07.00 - 19.00 hrs

A long golden sandy beach stretches 9 km (5.6 mi.) along the coast of Porto Santo, around 42 km (26.1 mi.) north-east of Madeira. The small island attracts visitors with its Portuguese lifestyle, great restaurants, hiking trails and water sports options - perfect for a relaxing beach holiday. Alongside the fascinating basalt formations of Pico de Ana Ferreira, visitors can also immerse themselves in history: Casa Colombo - Museu do Porto Santo is dedicated to the famous navigator Columbus, who is said to have once lived on the island.

Days 3 - 4 Relaxation at sea

Day 5 Portimao/Portugal, 08.00 - 19.00 hrs

The copper-red cliffs along the Algarve coast, which rise up almost vertically from the deep-blue sea, make Portimao a real highlight. The charming old town and the marina are perfect for relaxed walks, while the Praia da Rocha - an endless, golden shimmering beach - invites you to enjoy soaking up some rays of sun. Numerous other bays, dune islands and crystal-clear water are perfect for beach days at your own leisure, which will quickly make you forget the everyday.

Day 6 Cadiz/Spain, 07.00 - 19.00 hrs

The white buildings of Cadiz appear on the horizon, while the golden domes of the cathedral reflect the bright blue sky. The screeches of seagulls and the sound of the waves are carried on the wind. Cadiz, with its history dating back over 3,000 years, was once a lively trading centre. Today, the city retains its pride in its majestic palaces, the Miradores, which offer a breathtaking view over the endless sea. And as you approach

the long sandy beach, you almost expect Halle Berry to emerge from the waves - as she did in the famous James Bond scene filmed here.

Day 7 Marbella (Puerto Banus)/Spain, 07.00 - 19.00 hrs

Marbella on the Costa del Sol appeals to visitors thanks to its sophisticated charm and long history: originally founded by the Phoenicians, in the mid-1950s the city started to become a meeting point for the international jet set. Prince Alfonso of Hohenlohe made the Marbella Club the place to be, and in the 1970s Arab aristocrats like the Saudi King and the Emirs of Abu Dhabi and Qatar arrived in town. Today, the newly renovated seafront promenade and the charming little streets around the Plaza de los Naranjos are a great place for a stroll. Numerous bars, restaurants and luxury boutiques add to the special atmosphere of Marbella - a city where tradition and modernity come together in harmony.

Day 8 Relaxation at sea

Day 9 Valencia/Spain, 07.00 - 19.00 hrs

Valencia impresses with its age-old buildings and modern architecture. The heart of the old town is the Plaza de la Reina with its magnificent cathedral, with a bell tower offering fantastic views over the city. It's well worth taking a walk around the Mercado Central, where local specialities await culinary enthusiasts. Futuristic charm comes from the Ciutat de les Arts i les Ciències, an impressive complex of buildings and parkland designed by Santiago Calatrava and Felix Candela and incorporating an opera, science museum and aquarium.

Day 10 Palma de Mallorca/Mallorca/Balearic Islands/Spain, arrival 12.00 hrs
Overnight stay on board

The Small Cruise Ship Collection
www.small-cruise-ships.com

01432 507 280 (within UK)

info@small-cruise-ships.com | small-cruise-ships.com



The Small Cruise
Ship Collection

www.small-cruise-ships.com

small-cruise-ships.com

info@small-cruise-ships.com

First-class restaurants, breathtaking views and a lively nightlife - Palma de Mallorca, the capital of the Balearic Islands, combines historic sights with modern charm. Stretched out along palm-lined promenades, the cultural centre of the city is Passeig des Born, where exclusive shops and tapas bars will tempt you in. The old town, criss-crossed by narrow streets, is dominated by the impressive Gothic cathedral, La Seu, while the former merchants' stock exchange, Llotja de Palma, is another architectural highlight of the city. Its blend of Mediterranean charm and vibrant urban life makes Palma a perfect destination.

Day 11 Palma de Mallorca

Please note:

Itineraries are subject to change.



The Small Cruise
Ship Collection

www.small-cruise-ships.com

01432 507 280 (within UK)

info@small-cruise-ships.com | small-cruise-ships.com

The Small Cruise Ship Collection

www.small-cruise-ships.com

small-cruise-ships.com

info@small-cruise-ships.com

YOUR SHIP: EUROPA

YOUR SHIP: Europa

VESSEL TYPE:

LENGTH:

PASSENGER CAPACITY:

BUILT/REFURBISHED:

Extensive space for a maximum of 400 guests A crew-to-guest ratio of almost one to one Outside suites only, most with a veranda Five restaurants for the ultimate in culinary indulgence - including THE GLOBE by three-star chef Kevin Fehling Top-class entertainment: experience international artists and experts live on board EUROPA Refresh: new fitness and wellness concepts for even more well-being MS EUROPA is an award-winning luxury cruise ship renowned for setting global standards in refined small-ship cruising. Accommodating a maximum of just 400 guests, the ship offers an intimate and highly personalised experience, supported by an almost one-to-one crew-to-guest ratio. Designed around the concept of casual luxury, EUROPA combines spacious surroundings, attentive service, and elegant all-suite accommodation, with all suites featuring ocean views and most offering private verandas. Onboard, guests can enjoy five exceptional restaurants, including fine dining concepts created in collaboration with acclaimed chefs, alongside world-class entertainment, wellness facilities, and thoughtfully curated enrichment experiences. The ship's smaller size allows access to unique itineraries and exclusive ports beyond the reach of larger vessels, while recent EUROPA Refresh

enhancements have introduced updated fitness and wellness concepts for an even more elevated onboard experience. Blending sophistication, comfort, and flexibility, MS EUROPA delivers a truly premium voyage to destinations



worldwide.

The Small Cruise Ship Collection

www.small-cruise-ships.com

01432 507 280 (within UK)

info@small-cruise-ships.com | small-cruise-ships.com

The Small Cruise Ship Collection

www.small-cruise-ships.com

small-cruise-ships.com

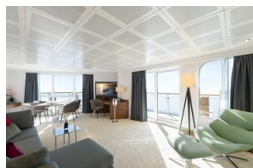
info@small-cruise-ships.com

INSIDE YOUR SHIP

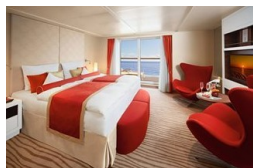
Penthouse Deluxe Suite



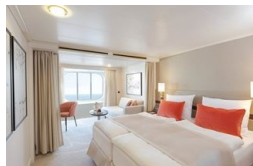
Penthouse Grand Suite



SPA Suite



Suite with panorama window



Veranda Suite Cat. 4-5

Veranda Suite Cat. 6-7



The Small Cruise Ship Collection

www.small-cruise-ships.com

small-cruise-ships.com

info@small-cruise-ships.com

PRICING

07-May-2027 to 17-May-2027

Suite with panorama window	£5299 GBP pp
Veranda Suite Cat. 4-5	£6215 GBP pp
Veranda Suite Cat. 6-7	£7605 GBP pp
SPA Suite	£8215 GBP pp
Penthouse Deluxe Suite	£12739 GBP pp
Penthouse Grand Suite	£20309 GBP pp