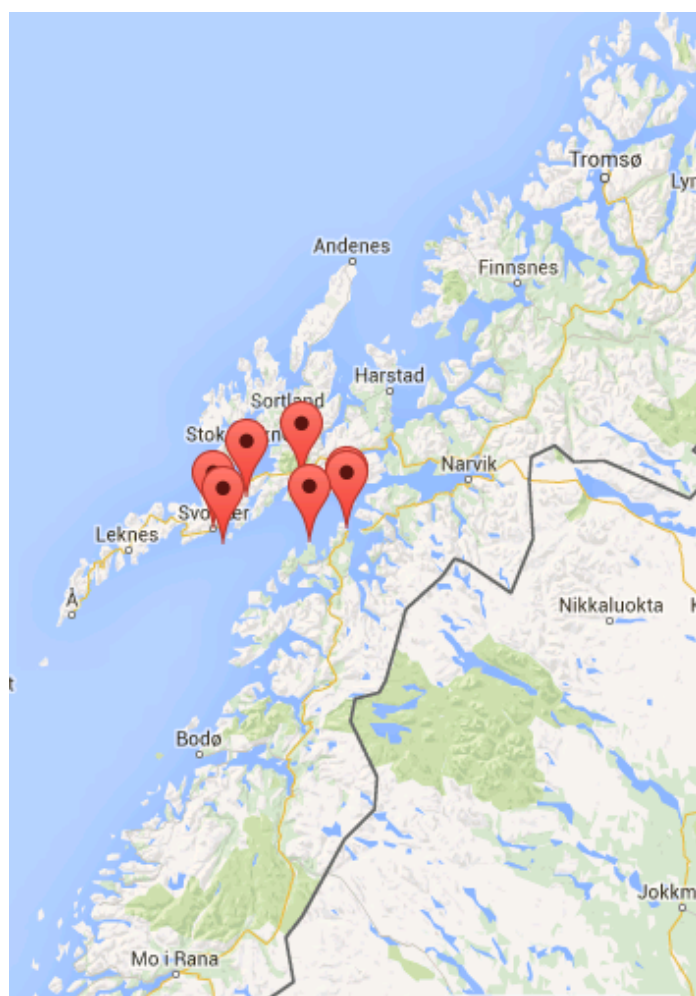




## LOFOTEN, NORWAY AURORA BOREALIS

A voyage to Lofoten where at night, when there is open sky we may be able to admire the Aurora borealis (Northern Lights). We will depart from Ldingen and set sail for the Tysfjord. We can climb the hill at Skarverget which is an outlook post for Sea Eagle. We stay for the night in the small harbour of Korsnes, a village at the entrance of the Tysfjord. Enjoy hiking and free snowshoeing - the activity is free of charge and includes the rental of snowshoes. PLEASE NOTE: The Lofoten voyages take place in late autumn, when the days are short in Northern Norway. We can expect the first snow showers, and sometimes temperatures just above freezing. The autumn colours will be beautiful during the daytime. At night, when there is open sky we may be able to admire the Aurora borealis (Northern Lights). The Lofoten voyages are very dependent on the weather, which can be quite rough. Therefore the outline of the voyage, given above is just for guidance. A typical itinerary to the Lofoten is illustrated below. This itinerary is for guidance only. Programs may vary depending on local ice and weather conditions, the availability of landing sites and opportunities to see wildlife. The final itinerary will be determined by the Expedition Leader on board. Flexibility is paramount for expedition cruises.



### ITINERARY

Day 1: Embark the vessel in Ldingen

Arrive by public bus in Ldingen. Staying on the sailing ship Noorderlicht in the harbour of Ldingen.



## The Small Cruise Ship Collection

[www.small-cruise-ships.com](http://www.small-cruise-ships.com)



[small-cruise-ships.com](http://small-cruise-ships.com)

[info@small-cruise-ships.com](mailto:info@small-cruise-ships.com)

### Day 2: Tysfjord

Depart from Ldingen and set sail for the Tysfjord. In the afternoon land to climb the hill at Skarverberget which is an outlook post for Sea Eagle. We stay for the night in the small harbour of Korsnes, a village at the entrance of the Tysfjord.

### Day 3: Leiknes

Enjoy a morning walk to the Stone Age petroglyphs at Leiknes. Images of animals such as a Killer Whale and Elk have been carved into the hard rock in the hills. In the afternoon we sail to the island of Skrova where we arrive late in the afternoon. We stay there for the night. Skrova is a small, rugged island where the 200 inhabitants mainly live from fishery. It is one of the few places in Norway from where whale hunters still hunt for Minke whale.

### Day 4: Skrova

The morning walk on Skrova is an easy walk bringing us to a nice bay on the other side of the island. The active passengers can climb the 255 meters peak of Skrova for the 360o view. Good chances of Sea Eagle during these walks. In the afternoon we sail for Kabelvag. This beautiful historical village was until the beginning of the 20th century the centre for the Lofoten Cod fisheries.

### Day 5: Kabelvag to Svolvær

For the hiking oriented a morning walk from Kabelvag to Svolvær is offered, following a hiking path through the hills. The Noorderlicht will sail with the sailing enthusiasts to Svolvær. In the afternoon there is the possibility visit to Svolvær which is the biggest town of Lofoten. We stay for the night in Svolvær so there is a chance to enjoy the famous Svolvær night-life.

### Day 6: Trollfjord

In the morning we sail into the Trollfjord, a famous steep fjord a few hours sailing from Svolvær. Afterwards we head for Trønder, on the Norwegian mainland, where we stay for the night.

### Day 7: Trønder

In the morning we walk to the lighthouse of Trønder and admire the works of art that are placed in this small artists village. Trønder is known because of the Norwegian writer and Nobel-prize winner, Knut Hamsun. With a good wind we might sail in the afternoon to Hustadgaard in Vestbygd. Here we will have the opportunity to see the ye I Stein, Eye in Stone, a sculpture of 37 tonnes made by the Indian artist Anish Kapoor. Then we have to head for Ldingen again. Arrival in Ldingen late in the evening and staying there for the night.

### Day 8: Arrival in Ldingen

Disembarkation from the Noorderlicht in the morning, public bus to the airport.



The Small Cruise Ship Collection

[www.small-cruise-ships.com](http://www.small-cruise-ships.com)

**01432 507 280** (within UK)

[info@small-cruise-ships.com](mailto:info@small-cruise-ships.com) | [small-cruise-ships.com](http://small-cruise-ships.com)





## The Small Cruise Ship Collection

[www.small-cruise-ships.com](http://www.small-cruise-ships.com)



[small-cruise-ships.com](http://small-cruise-ships.com)

[info@small-cruise-ships.com](mailto:info@small-cruise-ships.com)

## YOUR SHIP: NOORDERLICHT

**YOUR SHIP:**

**Noorderlicht**

**VESSEL TYPE:**

**LENGTH:**

**PASSENGER CAPACITY:**

**BUILT/REFURBISHED:**

The Noorderlicht was originally built in 1910 in Flensburg, Germany as a three-masted schooner. For most of her existence she served as a light-vessel on the Baltic. In 1991 the present owners purchased the hull and re-rigged and refitted her thoroughly, under the rules of "Register Holland". The Noorderlicht now has a well-balanced two-masted schooner rig and is capable of sailing the seven seas. The qualified captains have a great experience of the oceans. Together with the rest of the crew, they will do everything possible to ensure that you have a wonderful and unforgettable journey. Ice class: The Noorderlicht has no ice class. She was anchored year around near Flensburg (Germany). Due to heavy ice conditions in the winter time, the bow of the Noorderlicht was strengthened. The vessel is not an ice breaker but has a strengthened bow.



The Small Cruise Ship Collection

[www.small-cruise-ships.com](http://www.small-cruise-ships.com)

**01432 507 280** (within UK)

[info@small-cruise-ships.com](mailto:info@small-cruise-ships.com) | [small-cruise-ships.com](http://small-cruise-ships.com)



# The Small Cruise Ship Collection

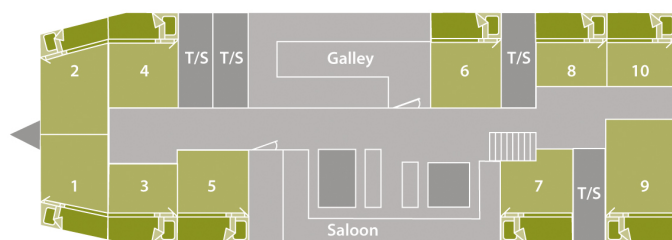
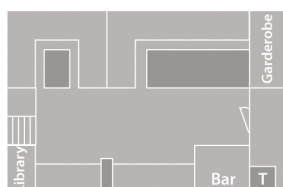
[www.small-cruise-ships.com](http://www.small-cruise-ships.com)



[small-cruise-ships.com](http://small-cruise-ships.com)

[info@small-cruise-ships.com](mailto:info@small-cruise-ships.com)

## INSIDE YOUR SHIP



s/v Noorderlicht deckplan

twin shared inside



upper and lower berth

T

Toilet

S

Shower



The Small Cruise Ship Collection

[www.small-cruise-ships.com](http://www.small-cruise-ships.com)

01432 507 280 (within UK)

[info@small-cruise-ships.com](mailto:info@small-cruise-ships.com) | [small-cruise-ships.com](http://small-cruise-ships.com)



## The Small Cruise Ship Collection

[www.small-cruise-ships.com](http://www.small-cruise-ships.com)



[small-cruise-ships.com](http://small-cruise-ships.com)

[info@small-cruise-ships.com](mailto:info@small-cruise-ships.com)

## PRICING

---



The Small Cruise  
Ship Collection

[www.small-cruise-ships.com](http://www.small-cruise-ships.com)

**01432 507 280** (within UK)

[info@small-cruise-ships.com](mailto:info@small-cruise-ships.com) | [small-cruise-ships.com](http://small-cruise-ships.com)