

The Small Cruise Ship Collection

www.small-cruise-ships.com

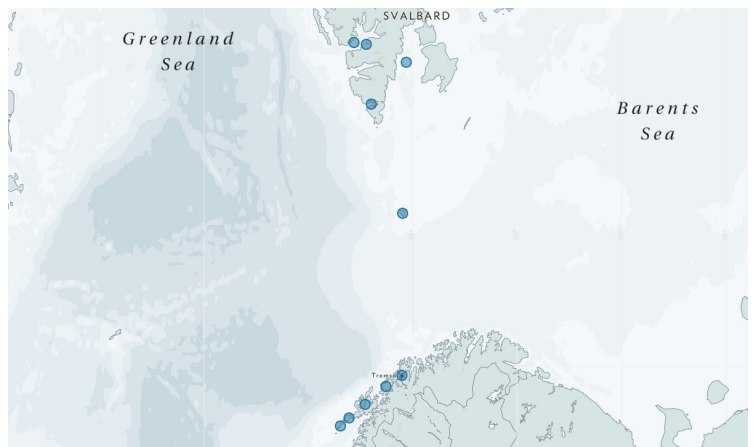


small-cruise-ships.com

info@small-cruise-ships.com

LOFOTEN, BEAR ISLAND & SVALBARD EXPEDITION CRUISE

Join us on an unparalleled expedition cruise from the dramatic Lofoten Islands to the icy realm of Svalbard! Aboard the comfortable 50-passenger ship, M/S Quest, and our sturdy Zodiacs, we explore Lofoten, known for its picturesque small fishing ships and breathtakingly beautiful fjords, before setting course for the legendary Bear Island. This rarely visited island, situated in the middle of the Barents Sea, is home to one of the North Atlantic's largest seabird colonies. Our next destination is Svalbard's untamed wilderness, which welcomes us with snow-covered mountain peaks, magical midnight sun, and sparkling ice formations. As we explore and enjoy the Arctic winter landscape, we keep an eye out for polar bears, walrus, seals, Arctic foxes, and other iconic wildlife. This is the perfect journey for anyone wishing to experience different parts of magnificent Norway!



ITINERARY

Day 1: Tromsø

We arrive in Tromsø located 350 kilometres north of the Arctic Circle, beautifully framed by fjords and mountain peaks. The city has been the starting point for many polar expeditions and was referred to as "the Gateway to the Arctic" in the 1800s. The high mountain peaks, offer marvellous sceneries together with the small picturesque houses. In Tromsø we board our expedition ship, M/S Quest, where we are welcomed by the guides and crew. Once we have set sail, our journey takes us towards the dramatic Lofoten Islands.

Day 2: Senja and Vesterålen

We make a stop on the island of Senja, Norway's second-largest island, often referred to as "Norway in miniature" thanks to its dramatic variety of jagged peaks, deep fjords and small fishing communities clinging to the narrow strip between sea and mountains. Here, mountains rise steeply from the ocean and

The Small Cruise Ship Collection

www.small-cruise-ships.com

01432 507 280 (within UK)

info@small-cruise-ships.com | small-cruise-ships.com



The Small Cruise Ship Collection

www.small-cruise-ships.com

small-cruise-ships.com

info@small-cruise-ships.com

scenic routes wind through a landscape shaped by wind, water and ice.

Further south lies the Vesteralen archipelago -- a tranquil Arctic island group defined by wide horizons and abundant wildlife. The region is particularly renowned for its whale-rich waters, where whales can be observed for much of the year, as well as for hiking opportunities and coastal scenery offering the same dramatic beauty as Lofoten, but at a gentler pace.

Day 3: Lofoten Wall and Reine

Our journey continues along the southern side of what is colloquially known as the Lofoten Wall, a vast collection of rugged islands that majestically rise from the sea.

We go ashore and explore the small fishing village of Reine, which quietly gazes out over Kirkefjorden. With its characteristic wooden houses framed by dramatic mountain peaks, Reine has been voted the most beautiful place in Norway. Here, we also venture out in our Zodiacs to explore the surroundings.

Day 4: Trollfjorden

We continue our voyage along the Lofoten Wall and onwards through Trollfjorden, which is as magical as its name suggests. A little later, we head out to sea and set course for Bear Island. After just a few hours at sea, we reach well-known whale-watching areas that extend along the continental shelf. During our journey, we have the chance to see whales, and we are constantly on the lookout from the deck.

Day 5: Barents Sea

We continue at sea towards higher northern latitudes. During interesting lectures on board, we receive an introduction to Bear

Island's intriguing history. Naturally, we keep watching for whales!

Day 6: Bear Island

With solid Zodiacs, we explore this fascinating rocky island in the middle of the Barents Sea. Its remoteness means that only a few ships each year have the opportunity to stop for a visit. On the 400-metre vertical cliffs, we find one of the North Atlantic's largest seabird colonies. Here, tens of thousands of Brunnich's guillemots nest, along with puffins, razorbills, black guillemots, kittiwakes, and glaucous gulls. If the weather and winds are favourable, we will attempt a landing on this rarely visited island.

We then continue our journey into the Arctic waters. We sail overnight and, by the following afternoon, we sight the Svalbard archipelago - one of the world's most magnificent wilderness areas.

Day 7 - 10: Svalbard

In May, Svalbard offers visitors a wondrous purity, beautiful pastel colours, and breathtaking views. The midnight sun's rays fall on glistening ice formations, the fjord ice is thick, and the mountain peaks are snow-covered. It is spring in the Arctic, and being there as Svalbard awakens to life is a powerful experience. In this Arctic archipelago, we naturally keep an eye out for polar bears, walrus, and other iconic wildlife, but above all, we enjoy the magical nature that surrounds us. It is early in the season, and our exact itinerary over the coming days will be influenced by weather and ice conditions. With our Zodiacs, we explore the enchanting winter landscape in some of Svalbard's most beautiful fjords, making landings whenever possible.

The Small Cruise Ship Collection

www.small-cruise-ships.com

01432 507 280 (within UK)

info@small-cruise-ships.com | small-cruise-ships.com



****Storfjorden****

In the vast Storfjorden, between Edgeøya and Spitsbergen, drift ice is often present at this time of year, and only then will we know how far north we can go. On the southern part of Spitsbergen lies Isbukta. In this spectacular bay, we enjoy magnificent views of snow-covered mountain peaks and the mighty glacier front of Vasil'evbreen. The bay is also a popular spot for ivory gulls, skuas, and bearded seals.

****Hornsund & Bellsund****

Majestic Hornsund consists of several magnificent fjords on the southwest coast of Spitsbergen, where glaciers calve magically blue-tinged icebergs. On the mountain slopes at beautiful Varsolbukta in Bellsund, tens of thousands of little auks nest. We go ashore and hike across the tundra towards the bird cliff, where we can enjoy the charming birds circling around us up close.

****Isfjorden****

At the entrance to Isfjorden lies the distinctive bird cliff Alkhornet, a pointed rock several hundred metres high. Here, we go ashore to enjoy the snow-covered tundra and birdlife, including barnacle geese, Brunnich's guillemots, glaucous gulls, snow buntings, and tens of thousands of kittiwakes. In the crevices around the bird cliff, several Arctic foxes have their dens, and if we are lucky, we will see these cute, small animals frenetically searching for food.

Day 11: Longyearbyen

In the morning, we disembark in Longyearbyen, the main settlement of Svalbard, and begin our journey home.

Please note:

All itineraries are for guidance only. Our exact route will depend on the ice, weather conditions, wildlife and government regulations. The places mentioned are just examples of some of the many sites Svalbard has to offer. We always strive to maximise your experience. Please remember that flexibility is the key to a successful expedition!

The Small Cruise Ship Collection

www.small-cruise-ships.com



small-cruise-ships.com

info@small-cruise-ships.com

YOUR SHIP: QUEST

YOUR SHIP:

Quest

VESSEL TYPE:

Expedition

LENGTH:

PASSENGER CAPACITY:

BUILT/REFURBISHED:

M/S Quest was built in Denmark in 1992 to serve as a ferry on Greenland`s west-coast. In 2004/2005 she was redesigned as an expedition ship and has now a career as a small and comfortable expedition vessel. She was extensively renovated in 2018. Quest takes 53 passengers in 26 cabins, all with sea-view and private facilities. The triple cabins on deck 3 have upper and lower berths. All other cabins have two lower berths or a double bed. In your cabin you also find a desk with chair and ample storage space for clothes and equipment. The superior cabins on deck 3 and 4 are spacious and have a separate sitting area and TV/DVD. The Owner`s cabin, next to the Captain`s cabin, on deck 4 has a double bed, two large picture windows, a sitting area and TV/DVD. In the dining room you are treated to delicious meals in between landings and in the panorama lounge you can enjoy a breathtaking view of the surrounding polar landscape. Here you can listen to entertaining lectures on the area`s flora, fauna, history and glaciology. In the lounge you also find a well-stocked bar and a small library. The ship has spacious observation decks where you can enjoy the beautiful vistas and search for seabirds, whales and polar bears. The ship has a European Captain and there is a friendly

and informal atmosphere on board. Travelling with this small expedition ship offers an entirely different experience and perspective than you get on a larger and more conventional cruise ship. It is always possible to share a cabin on board M/S Quest. All cabins have windows and private



facilities.



The Small Cruise Ship Collection

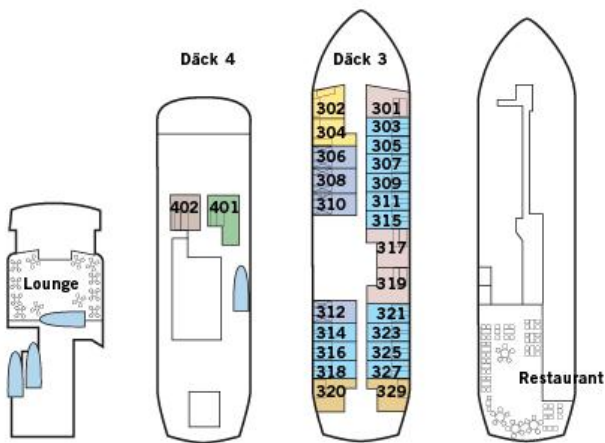
www.small-cruise-ships.com



small-cruise-ships.com

info@small-cruise-ships.com

INSIDE YOUR SHIP



Double Cabin



Double Cabin Superior



Owners Cabin



Triple Cabin



Twin Cabin



Twin Cabin Plus



Twin Cabin Solo



The Small Cruise Ship Collection

www.small-cruise-ships.com

01432 507 280 (within UK)

info@small-cruise-ships.com | small-cruise-ships.com



The Small Cruise Ship Collection

www.small-cruise-ships.com



small-cruise-ships.com

info@small-cruise-ships.com

PRICING

08-May-2027 to 18-May-2027

Twin Cabin Solo	£9619 GBP pp
Owners Cabin	£7309 GBP pp
Double Cabin Superior	£6769 GBP pp
Double Cabin	£6229 GBP pp
Twin Cabin	£5925 GBP pp
Triple Cabin	£5155 GBP pp
Twin Cabin Plus	£6229 GBP pp