



The Small Cruise
Ship Collection

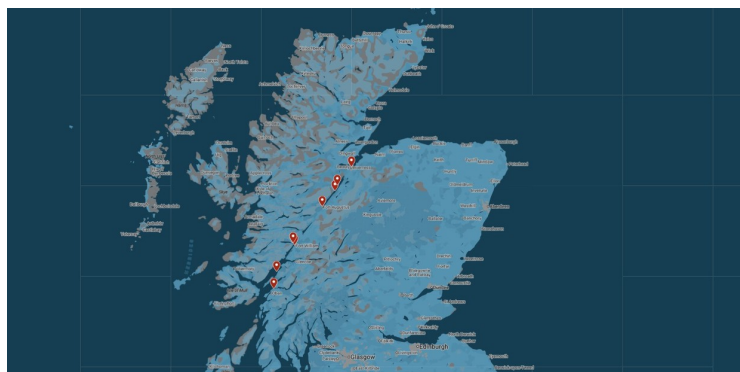
www.small-cruise-ships.com

small-cruise-ships.com

info@small-cruise-ships.com

LOCH NESS AND THE CALEDONIAN CANAL CRUISE

One of the best ways to have a true Scottish Experience is to cruise Scotland's Great Glen in a wee ship, sailing through Loch Ness and along the incredible Caledonian Canal. The Great Glen cuts the Scottish Highlands in half and the Caledonian Canal is an extraordinary feat of Victorian engineering that was devised by Thomas Telford to connect the east and west Scottish coasts and to allow ships to avoid the northern stormy water of the Pentland Firth and Cape Wrath. This six night Scottish cruise departs from Dunstaffnage Marina, near Oban. Drop-off at the east end of the Caledonian Canal is at Seaport Marina. Guests will travel through the Canal which connects Fort William on the west coast of Scotland, situated at the top of Loch Linnhe, to Inverness, on the east coast and the capital of the Highlands, situated on the Moray Firth. The Caledonian canal is some 60 miles long and its 29 locks, 10 bridges and 4 aqueducts link the lochs of Dochfour, Ness, Oich, and Lochy. These spectacular sea and fresh water lochs are all located in the Great Glen. Throughout the cruises there are great walks, stunning wildlife, amazing sea and fresh water lochs and picturesque Highland villages and towns and, perhaps, even a chance of seeing the elusive Loch Ness monster! If you wish to visit a specific place or have a specific experience, such as whisky tasting, then please do let your skipper know and he will endeavour to meet your request. Excursions and visits ashore are at your own cost.



ITINERARY

Days 1 - 6 Loch Ness Cruise

Some of the places we may visit are:

Oban: If you are travelling east (the west cruise is, of course, this itinerary in reverse) we embark our vessels at 1330 at Dunstaffnage Marina, near Oban, the gateway to the Hebridean isles.

Castle Stalker: We head out into beautiful Loch Linnhe and cruise along the east side of the picturesque Isle of Lismore to an anchorage off lovely Shuna Island. We will see the famous Castle Stalker located on a small tidal loch and our spectacular backdrop up ahead is the Ben Nevis mountain range. We can go ashore and visit the local nature reserve on the mainland and admire the famous Castle Stalker. There are lovely walks across the causeway bridge to Port Appin.

The Small Cruise
Ship Collection
www.small-cruise-ships.com

01432 507 280 (within UK)

info@small-cruise-ships.com | small-cruise-ships.com



The Small Cruise Ship Collection

www.small-cruise-ships.com



small-cruise-ships.com

info@small-cruise-ships.com

incredibly scenic night.

Loch Linnhe: To arrive at the Caledonian Canal entrance we cruise up Loch Linnhe. In this stunning sea loch you will have the opportunity to see many types of sea birds, including sea eagles, as well as dolphins and seals. We are surrounded with fantastic scenery with the impressive Ben Nevis mountain becoming closer as we travel up the loch. After carefully navigating the Corran Narrows we anchor off the Canal entrance at Corpach.

Caledonian Canal: We enter the canal and climb up through the eight locks of "Neptune's Staircase" to rise nearly 70 feet above the sea. You can walk along the towpath or stay on board as we climb. Then we cruise to Gairloch and our first inland, freshwater loch which is the long and narrow Loch Lochy. In the autumn, the surrounding hills are alive to the bellows of the rutting stags and the tree-lined parts of the canal are truly magnificent in their autumn colours. We cruise on through beautiful Loch Oich to reach the town of Fort Augustus.

Fort Augustus: We can visit the bustling town of Fort Augustus with its canal side pubs, Clansman Centre and Caledonian Canal Heritage Centre. When we leave the town we begin our descent through the locks to Loch Ness.

Loch Ness, Drumnadrochit and Urquhart Castle: Lochness is a large, long (23 miles) very deep loch and is famous for golden eagles, ospreys and of course "Nessie"! We can visit the pretty village of Drumnadrochit, home to the Loch Ness Centre and Exhibition, and surrounded by Glen Moriston and Glen Urquhart. We can anchor off the fabulous, historical Urquhart Castle for an

Inverness: We finally cruise to the end of Loch Ness and arrive at Seaport Marina, near Inverness. Inverness is a beautiful historic city, capital of the Highlands, and not far from the site of the famous Battle of Culloden. For the active there is the Ness Island Trail, which follows the River Ness, and you can even walk the towpath to the Canal's end at Clachnaharry, where it enters the sea.

Please note:

Please note that your voyage is weather dependent. Weather doesn't just mean good or bad weather. There are many considerations such as tidal gates, wind direction and strength, the strength and direction of currents, overfalls, and fetch. Depending upon the weather and nature's conditions, wildlife viewing varies.



The Small Cruise Ship Collection

www.small-cruise-ships.com

01432 507 280 (within UK)

info@small-cruise-ships.com | small-cruise-ships.com



The Small Cruise Ship Collection

www.small-cruise-ships.com



small-cruise-ships.com

info@small-cruise-ships.com

YOUR SHIP: SEAHORSE II

YOUR SHIP:

Seahorse II

VESSEL TYPE:

LENGTH:

PASSENGER CAPACITY:

BUILT/REFURBISHED:

Seahorse II (82 feet long and a beamy 23 feet) was built to the highest standard for the Norwegian fjords and life in the high northern latitudes. A 10mm Swedish steel hull, air conditioned and heated throughout, and winter sailing for the British Royal Navy for months at a time in the western approaches means that this wee cruise ship is more than enough for these summer adventures in the Gulf Stream warmed waters of the west coast of Scotland. Powerful enough to cruise the many spectacular islands and lochs of the Inner Hebrides and Outer Hebrides, yet small enough to anchor in remote and hauntingly beautiful places that the larger passenger ships are unable to visit. With a maximum speed of 11 knots (from a 350 hp Volvo diesel) Seahorse II is a sturdy, go-anywhere, yet comfortable adventurer. Accommodation 2019 Seahorse II takes a maximum of eleven guests. There are two NEW double (or twin) en-suites and two twins, three single cabins, one with a 105 cm wide bed, all temperature controlled and with washbasin. All cabin linen and towels are supplied including luxurious towelling dressing gowns for the cabins with no en-suite. There is a wonderful deck saloon where we dine and view the spectacular Hebridean wildlife. A bridge full of the best navigational aids, a

high foredeck for wildlife spotting and a boat deck for lounging, she is the perfect vessel for your life afloat. On the spacious aft deck (ideal for alfresco dining when the boat is at anchor or under way) we have a powerful little crane for launching Seahorse's two dinghies, two sea kayaks and paddle board. Here there is also plenty of room for your windsurf and kitesurf gears, diving gear, sailing dinghies and anything else you need for a great Scottish sea adventure. Your Crew You will have a crew of three taking you on your Scottish mini cruise. Your professional skipper is passionate about boats, sailing, and the natural environment of the islands and sea lochs of the Hebrides and Argyll. He is more than happy to share his knowledge of the area to those on board while ensuring his shipmates have as much fun as possible. You will have your own on board chef who provides wonderful meals, locally-sourced and freshly prepared from the galley and a bosun/crewmember who will be there to provide assistance whenever you



The Small Cruise Ship Collection

www.small-cruise-ships.com

01432 507 280 (within UK)

info@small-cruise-ships.com | small-cruise-ships.com



The Small Cruise Ship Collection

www.small-cruise-ships.com



small-cruise-ships.com

info@small-cruise-ships.com



will need it.



The Small Cruise
Ship Collection

www.small-cruise-ships.com

01432 507 280 (within UK)

info@small-cruise-ships.com | small-cruise-ships.com



The Small Cruise Ship Collection

www.small-cruise-ships.com



small-cruise-ships.com

info@small-cruise-ships.com

INSIDE YOUR SHIP

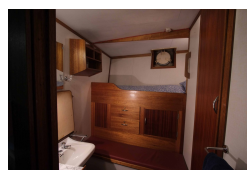
Accommodation Layout - Upper Deck



Accommodation Layout - Lower Deck



Double / Twin Cabin En-suite Single Cabin



Twin Cabin Semi En-suite



The Small Cruise Ship Collection

www.small-cruise-ships.com

01432 507 280 (within UK)

info@small-cruise-ships.com | small-cruise-ships.com



The Small Cruise Ship Collection

www.small-cruise-ships.com



small-cruise-ships.com

info@small-cruise-ships.com

PRICING

05-Oct-2025 to 10-Oct-2025

Double / Twin Cabin En-suite	£1950 GBP pp
Single Cabin	£1700 GBP pp
Twin Cabin Semi En-suite	£1800 GBP pp



The Small Cruise Ship Collection

www.small-cruise-ships.com

01432 507 280 (within UK)

info@small-cruise-ships.com | small-cruise-ships.com