



The Small Cruise Ship Collection

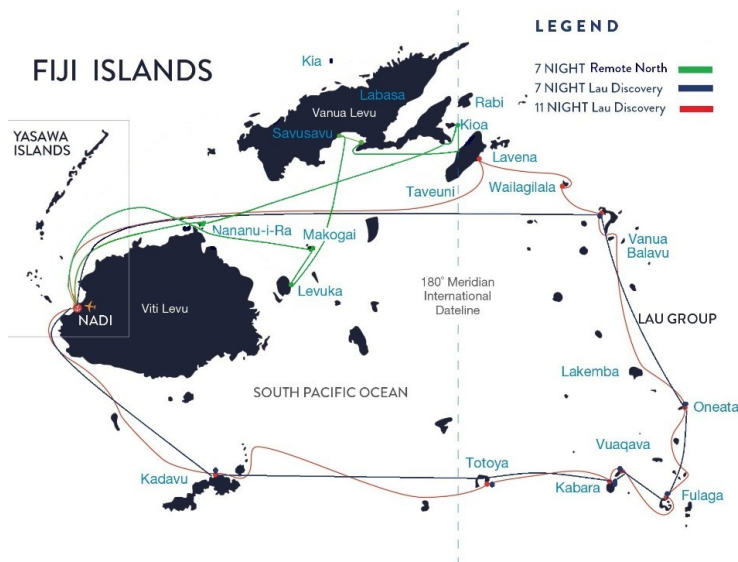
www.small-cruise-ships.com

small-cruise-ships.com

info@small-cruise-ships.com

LAU & KADAVU ISLAND 8 DAY CRUISE

If you want to experience the real Fiji, join us on Caledonian Sky as we explore the Lau Islands and Kadavu; a beautiful and remote region rarely seen by tourists. A visit to this region offers a once in a lifetime experience to a select few travellers, visiting turquoise bays and remote villages where they only see a supply boat once a month. Cruise highlights include a swim at a waterfall, exploring old ruins, snorkelling untouched reefs and getting up close with nesting turtles. You'll also explore the caves, reefs and lagoons of Qilaqila renowned for its mushroom-shaped islands, and the central lake on uninhabited Vuaqava island where you'll find turtles, snakes and amazing bird life. Best of all, you'll be welcomed and entertained by the friendly people of this region and experience a traditional Meke, Sevusevu and Ilovo quite different from the traditional Fijian feast. The Lau Island Group consists of 57 islets, of which only 30 are inhabited and if you enjoy getting off the beaten track these islands are for you, with no public transport or restaurants to be found. The Kadavu Group is made up of four main islands, of which Kadavu is the largest. It is home to the Great Astrolabe Reef, one of the world's largest barrier reefs and a renowned site for premier diving. Most days offer the opportunity to snorkel, swim and scuba dive the pristine waters of these beautiful islands and when you're not experiencing all that they have to offer, you'll enjoy the relaxing hospitality aboard the Caledonian Sky. Here you'll be pampered with most of the luxuries found on larger cruise liners including fully catered buffet and 3-course meals prepared fresh daily onboard, a freshwater swimming pool, jacuzzi, day spa, cocktail bar and much more.



ITINERARY

Day 1 SATURDAY:

Set sail on your Lau Discovery cruise over a light welcome lunch. After boarding there will be a full safety briefing from your Captain while we sail to our private island of Tivua, a great place to refresh your snorkelling skills. Later in the evening, enjoy a wonderful Welcome dinner as you cruise into a south pacific sunset.

Day 2 SUNDAY:



The Small Cruise Ship Collection

www.small-cruise-ships.com

01432 507 280 (within UK)

info@small-cruise-ships.com | small-cruise-ships.com



The Small Cruise Ship Collection

www.small-cruise-ships.com



small-cruise-ships.com

info@small-cruise-ships.com

Start your day at Makogai Island with a traditional Fijian ceremony before joining the 1 hour walking tour of Makogai leper colony and clam research station. The people of this remote village welcome us for church

Day 3 MONDAY:

Qilaqila, at the northwest end of Vanuabalavu, is known for its pristine waters, limestone caves and mushroom shaped islands. This is also known as the Bay of Islands and is famous for its amazing scenery and pristine reefs.

Day 4 TUESDAY:

We arrive at Fulaga Island this morning. Both are extinct volcano craters and known for their crystal lagoons and amazing corals. This afternoon we arrive at one of the Yagasa Islands, for snorkeling, swimming, coral viewing or kayaking.

Day 5 WEDNESDAY:

Explore uninhabited Vuaqava and its central lake known for turtles, snakes & amazing bird life. This is a sacred island for the Fijian culture and there will be an island walk to explore these relics. Please be warned that a reasonable level of fitness and good walking shoes will be required as the return walk is approximately 3 hours and quite difficult to negotiate. The beach here is also gorgeous for those who prefer to relax. We

heave anchor and travel over lunch to our next destination. This afternoon be welcomed & entertained by the people of Naikeleyaga Village on the island of Kabara known for their wood turning and Tongan heritage. Experience a traditional Meke, Sevusevu & Iovo quite different from the traditional Fijian. Don't forget your bula shirt and sulu for a traditional Iovo dinner on the island.

Day 6 THURSDAY:

Horse-shoe shaped Totoya Island is our destination today. We will visit a local school and the children will surprise you with their entertainment and show you their work. We will also have the opportunity to explore their reefs.

Day 7 FRIDAY:

We arrive in Kadavu and head to the Village of Nalotu for a welcome Sevusevu, then a tour of the village where you can witness the making of traditional fishing traps and pottery. The women of Nalotu village still make clay pottery in the time-honoured tradition that is rarely seen in Fiji anymore. This evening don your sulu (sarong) and join all the celebrations of our Pacific Island Night Finale.

Day 8 SATURDAY:

Disembark feeling refreshed. Most days will offer the opportunity to snorkel, swim and Scuba Dive the pristine waters of the beautiful Lau group of islands.



The Small Cruise Ship Collection

www.small-cruise-ships.com

01432 507 280 (within UK)

info@small-cruise-ships.com | small-cruise-ships.com



The Small Cruise Ship Collection

www.small-cruise-ships.com



small-cruise-ships.com

info@small-cruise-ships.com

Please Note:

All itineraries are subject to change due to weather, operational requirements, pandemics, government directives or acts of God.



The Small Cruise
Ship Collection

www.small-cruise-ships.com

01432 507 280 (within UK)

info@small-cruise-ships.com | small-cruise-ships.com



The Small Cruise Ship Collection

www.small-cruise-ships.com



small-cruise-ships.com

info@small-cruise-ships.com

YOUR SHIP: CALEDONIAN SKY

YOUR SHIP:

Caledonian Sky

VESSEL TYPE:

LENGTH:

PASSENGER CAPACITY:

BUILT/REFURBISHED:

The MS Caledonian Sky, fully refurbished in 2021, accommodates a maximum of 114 passengers in 57 spacious outside suites. Many have walk-in wardrobes and some feature tub baths. There will be seven categories of suites and sixteen suites will have private balconies. For those familiar with the MS Island Sky, Caledonian Sky is a sister ship, she will feel like a second home, although there are some differences. The dining room, lounge, Lido Deck and bar are all similar. However, the 'Club' on the MS Caledonian Sky has been transported to the very top deck. Here, there is a library and bar which leads out on to a lovely forward deck. The 'Club' has wonderful views with ceiling to floor windows. Your Suite Onboard there are 57 exceptionally spacious and well designed suites. The passenger accommodation is arranged over four decks and all suites have outside views. All feature a sitting room area and some have private balconies. Each affords considerable comfort with en-suite bathroom featuring a country style wash basin, hot towel rack and vanity unit with sink and walk-in shower and/or bath tub. Facilities in the suites also include walk-in or spacious wardrobes, dressing table with large mirror and stool or desk, mini-fridge, flat screen television, telephone, programmable

electronic safe, hairdryer, assorted toiletries, air-conditioning and heating. Bottled water, towelling dressing gowns and slippers are also provided for your comfort. Your space The spacious and finely decorated public rooms include a large lounge where daily briefings and talks will be provided throughout the voyage and an elegant bar where a pianist plays periodically throughout the day. The bar also features a 24-hour tea and coffee station. In addition there is the Club Lounge on the Panoramic Deck which features a bar. The onboard travel library is the perfect place to relax with a book and is stocked with reference books pertaining to the places the vessel is visiting along with a selection of games and two computers with internet access. Daily newspapers and magazines are also placed in the library depending on local availability. Outside there is a rear Lido deck where meals are served in warm weather under shade. On the top deck there is a further observation and sun deck with bar service and comfortable deck furniture for sun bathing or relaxing with a book. There is also a small gymnasium onboard and hairdressers with appointments made on request. Your dining With only one sitting and a maximum of just over 100 passengers, the quality of cuisine will be of a consistent superior quality. Where possible and when it meets his high standards, our accomplished chef will obtain local produce in markets or buy the catch of the day from a passing fishing boat. Such purchases enhance the well stocked larders and bring a local touch to the varied menus. In the main elegant dining room, breakfast is served buffet-style, with certain items cooked to order and lunch and dinner is a la carte. When weather permits, breakfast, a buffet-style lunch and



The Small Cruise Ship Collection

www.small-cruise-ships.com

01432 507 280 (within UK)

info@small-cruise-ships.com | small-cruise-ships.com



The Small Cruise Ship Collection

www.small-cruise-ships.com



small-cruise-ships.com

info@small-cruise-ships.com

dinner are also served on deck. To enhance your dining experience even further a selection of wines are included with lunch and dinner. Afternoon tea is served in the lounge and tea and coffee are available 24 hours. With sufficient notice, most diets can be catered for on board. For your comfort, safety and security The vessel is equipped with the latest safety, navigation and communications equipment along with roll stabilisers to minimise the ship's motion. The Captain and officers operate an open-bridge policy that allows passengers onto the bridge at most times with the exception of arrival and departure from port and during times of complicated navigation. Here you can check the ship's progress by charts and learn more from the officers about your journey. There is also a dedicated channel on your television in your suite showing the routing of the vessel along with technical information and estimated times of arrival and departure from port. On board you will also find a clinic and doctor and a lift that serves all decks. Smoking on board is restricted to outside decks only. Gratuities Unlike many other cruise vessels, onboard the MS Caledonian Sky you do not need to worry about tipping staff as we have included them in your holiday price. In addition we tip all their guides and drivers along the way, thereby taking away the hassle of always having to remember to have some small



change with you.



The Small Cruise Ship Collection

www.small-cruise-ships.com

01432 507 280 (within UK)

info@small-cruise-ships.com | small-cruise-ships.com



The Small Cruise Ship Collection

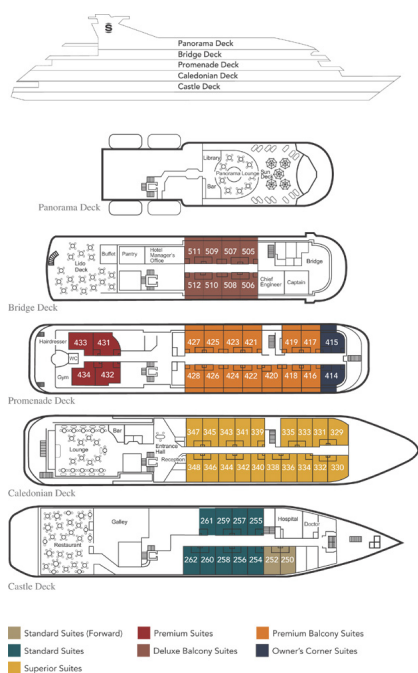
www.small-cruise-ships.com



small-cruise-ships.com

info@small-cruise-ships.com

INSIDE YOUR SHIP



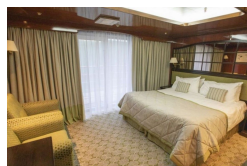
Deluxe Balcony Suites



Owner's Corner Balcony Suites



Premium Balcony Suites



Premium Suites



Standard Suites

Standard Suites (Forward)



The Small Cruise Ship Collection

www.small-cruise-ships.com



small-cruise-ships.com

info@small-cruise-ships.com

PRICING

26-Oct-2024 to 02-Nov-2024

Standard Suites (Forward)	£4000 GBP pp
Superior Suites	£4728 GBP pp
Premium Balcony Suites	£5638 GBP pp
Owner's Corner Balcony Suites	£5991 GBP pp
Standard Suites	£4182 GBP pp
Premium Suites	£4910 GBP pp
Deluxe Balcony Suites	£5456 GBP pp

07-Dec-2024 to 14-Dec-2024

Owner's Corner Balcony Suites	£5991 GBP pp
Superior Suites	£4728 GBP pp
Deluxe Balcony Suites	£5456 GBP pp
Premium Balcony Suites	£5638 GBP pp
Standard Suites	£4182 GBP pp
Standard Suites (Forward)	£4000 GBP pp
Premium Suites	£4910 GBP pp

09-Nov-2024 to 16-Nov-2024

Deluxe Balcony Suites	£5456 GBP pp
Premium Balcony Suites	£5638 GBP pp
Standard Suites (Forward)	£4000 GBP pp
Superior Suites	£4728 GBP pp
Premium Suites	£4910 GBP pp
Owner's Corner Balcony Suites	£5991 GBP pp
Standard Suites	£4182 GBP pp

21-Dec-2024 to 28-Dec-2024

Premium Suites	£4910 GBP pp
Owner's Corner Balcony Suites	£5991 GBP pp
Standard Suites (Forward)	£4000 GBP pp
Superior Suites	£4728 GBP pp
Deluxe Balcony Suites	£5456 GBP pp
Premium Balcony Suites	£5638 GBP pp
Standard Suites	£4182 GBP pp

23-Nov-2024 to 30-Nov-2024

Standard Suites	£4182 GBP pp
Deluxe Balcony Suites	£5456 GBP pp
Standard Suites (Forward)	£4000 GBP pp
Owner's Corner Balcony Suites	£5991 GBP pp
Premium Suites	£4910 GBP pp
Premium Balcony Suites	£5638 GBP pp
Superior Suites	£4728 GBP pp



The Small Cruise Ship Collection

www.small-cruise-ships.com

01432 507 280 (within UK)

info@small-cruise-ships.com | small-cruise-ships.com



The Small Cruise Ship Collection

www.small-cruise-ships.com



small-cruise-ships.com

info@small-cruise-ships.com

PRICING

04-Jan-2025 to 11-Jan-2025

Premium Suites	£4910 GBP pp
Deluxe Balcony Suites	£5456 GBP pp
Standard Suites (Forward)	£4000 GBP pp
Premium Balcony Suites	£5638 GBP pp
Owner's Corner Balcony Suites	£5991 GBP pp
Standard Suites	£4182 GBP pp
Superior Suites	£4728 GBP pp

01-Mar-2025 to 08-Mar-2025

Premium Balcony Suites	£5638 GBP pp
Owner's Corner Balcony Suites	£5991 GBP pp
Premium Suites	£4910 GBP pp
Standard Suites	£4182 GBP pp
Superior Suites	£4728 GBP pp
Deluxe Balcony Suites	£5456 GBP pp
Standard Suites (Forward)	£4000 GBP pp

18-Jan-2025 to 25-Jan-2025

Premium Balcony Suites	£5638 GBP pp
Owner's Corner Balcony Suites	£5991 GBP pp
Premium Suites	£4910 GBP pp
Standard Suites (Forward)	£4000 GBP pp
Superior Suites	£4728 GBP pp
Deluxe Balcony Suites	£5456 GBP pp
Standard Suites	£4182 GBP pp

08-Feb-2025 to 15-Feb-2025

Owner's Corner Balcony Suites	£5991 GBP pp
Standard Suites	£4182 GBP pp
Premium Balcony Suites	£5638 GBP pp
Premium Suites	£4910 GBP pp
Deluxe Balcony Suites	£5456 GBP pp
Superior Suites	£4728 GBP pp
Standard Suites (Forward)	£4000 GBP pp



The Small Cruise Ship Collection

www.small-cruise-ships.com

01432 507 280 (within UK)

info@small-cruise-ships.com | small-cruise-ships.com