



The Small Cruise Ship Collection

www.small-cruise-ships.com

small-cruise-ships.com

info@small-cruise-ships.com

THE KIMBERLEY CRUISE - 11 DAYS FROM DARWIN OR BROOME

Thirty years ago, when we made the first exploratory cruises in the Kimberley, we had to rely on hand-drawn 'mudmaps' and the knowledge of fishermen and early explorers to navigate the vast and unpredictable coastline. Today, with decades of experience behind us, and in-house experts, maps, tidal charts, and landing notes, we have a level of knowledge that cannot be easily replicated. Now, we invite you to join us on our classic 10-night Kimberley expedition. Witness the power of nature at the magnificent King George River and its towering twin falls, explore ancient rock art with expert guides, and witness diverse marine life and cascading waters at Montgomery Reef. Later in the season, you may also see the majestic Humpback Whales on their migration north to breeding grounds. Every Kimberley voyage is different. Come and discover the Kimberley for yourself with the pioneers.

ITINERARY

DAY 1: DEPART DARWIN / BROOME

Darwin Departures: Arrive at Darwin Fort Hill Wharf for boarding at 8:00am, with time to settle into your stateroom before our 9:00am departure. There will be a light breakfast available upon boarding before we cruise across Joseph Bonaparte Gulf and sail into Western Australian waters. Broome Departures: Arrive at Broome Deep Water Port at 4:00pm where there is time to settle into your cabin before our 5:00pm departure. Take the time to become acquainted with all the facilities onboard before join the expedition team in the Bridge Deck Lounge for an introduction to the Kimberley. As dusk falls meet your fellow travellers, the Captain and crew for the Captain's Welcome Drinks.

KING GEORGE RIVER AND FALLS (OOMARI FALLS)

Fed by the King George River draining across the Gardner Plateau, 80m tall King George Falls are the most impressive Kimberley waterfalls and the highest twin falls in Western Australia. Before reaching the mist-like spray rising from the base of King George Falls, we cruise through steep-sided gorges carved by a flooded river system that carved a swathe through the Kimberley landscape 400 million years ago. Early in the waterfall season, we may cruise around the base of impressive King George Falls while in later months we take the opportunity to view the honeycomb erosion patterns of sandstone cliffs up close.

VANSITTART BAY (BANJAL)

Vansittart Bay is home to many cultural and historically significant sites like the remarkable Gwion Gwion (Bradshaw)



The Small Cruise Ship Collection

www.small-cruise-ships.com

small-cruise-ships.com

info@small-cruise-ships.com

Aboriginal rock art galleries estimated to be up to 20,000 years old. Jar Island is so-named after the pot shards found here, brought to the island by Makassan fishermen harvesting sea cucumbers (also known as trepang). Nearby, on the Anjo Peninsula lays the well-preserved wreckage of a US Airforce C-53 Skytrooper aircraft, the result of a pilot losing his bearings flying from Perth to Broome in 1942 and putting down on a salt pan near present-day Truscott Airbase.

MITCHELL FALLS, WINYALKAN, & SWIFT BAY

Tumbling down the Mitchell Plateau in a series of tiered waterfalls and emerald green rock pools, the Mitchell Falls are the photogenic poster child for the Mitchell River National Park. Take a scenic helicopter flight (additional cost) to multi-tiered Mitchell Falls where emerald-hued rock pools cascade down the escarpment and ancient rock art galleries are concealed in caves behind curtains of water. Mitchell River National Park is inhabited by significant numbers of mammals, amphibians, reptiles and bird species which are lured by a year-round water source. Sandstone terraces beside tiered rock pools make a terrific viewing platform from which to savor the serenity of this ancient landscape. An alternative option to Mitchell Falls is exploring the sandstone caves of Wollaston Bay or Wollaston Creek. This mass of weathered tunnels, arches and columns form a labyrinth-like maze and was once an Aboriginal midden. Another option while anchored at Winyalkan Bay is a visit to a series Wandjina and Gwion Gwion rock art galleries at Swift Bay. In the evening we will enjoy watching the sunset over the Indian Ocean while indulging in a gourmet BBQ.

PRINCE FREDERICK HARBOUR AND BIGGE ISLAND (WUUYURU)

Prince Frederick Harbour is one of the Kimberley's most spectacular locations at the southern end of York Sound. The

harbour is dotted with islands lined with mangroves and monsoon rainforests, set against a backdrop of ochre-hued escarpment. White-bellied sea eagles and other birds of prey are often seen here, and at low tide, expansive mudflats reveal large populations of mudskippers and mangrove crabs. We will take our Xplorer tender vessels on a cruise up Porosus Creek to view some striking rock formations. Bigge Island's Indigenous name is Wuuyuru, and the Indigenous Group of the area is the Wunambal people.

PRINCE REGENT RIVER AND CAREENING BAY (WUNBUNG-GU)

King Cascade is a classically beautiful terraced waterfall and is one of the most photographed waterfalls in the Kimberley. Falling from a considerable height and around 50m across, water tumbles down a staggered terrace of Kimberley sandstone. Layer upon layer of ochre-hued and blackened rock sprouts grasses, mosses and ferns in a sort of lushly vegetated hanging garden. We reach King Cascade after cruising in our Xplorer tender vessels down the steep-sided Prince Regent River which is a remarkable anomaly as the river runs dead straight along a fault line. Lt. Phillip Parker King named nearby Careening Bay after he beached his leaking vessel HMC Mermaid to effect repairs. While stranded on this remote coastline for 17 days the ship's carpenter carved HMC Mermaid 1820 into the bottle-shaped trunk of a boab tree near the beach. 200 years later, the Mermaid Boab Tree has since split into two trunks and sports a mammoth girth of 12m. Significantly, the bulbous tree is listed on the National Register of Big Trees and the carpenter's careful inscription now stands almost as tall as a person.

MONTGOMERY REEF (YOWJAB)



The Small Cruise Ship Collection

www.small-cruise-ships.com

small-cruise-ships.com

info@small-cruise-ships.com

Montgomery Reef is a biologically diverse area covering over 300 sq km and was named by Phillip Parker King. Twice daily, as the sea recedes in mammoth 11m tides, Montgomery Reef rises from the Indian Ocean in a cascade of rushing water revealing a flat-topped reef pockmarked with rock pools and rivulets. As the reef emerges, we get up close in our Xplorer and Zodiac inflatable tenders to witness the spectacle as our Expedition Team share their knowledge on the formation of the reef and the myriad wildlife. Opportunistic birds take advantage of the emerging reef, feeding on marine life left exposed in rock pools. Turtles, dolphins, dugongs and sawfish too are also attracted to feeding opportunities as the ocean recedes. The ocean is awash in a swirl of eddies and whirlpools as the moon's gravitational force takes hold. Then, a few hours later the entire water-borne drama is reversed as the tide comes in and Montgomery Reef disappears below sea level.

DOUBTFUL BAY AND RAFT POINT (NGUMBREE)

Raft Point guards the entrance to Doubtful Bay, a vast body of sheltered water that harbours significant sites such as the ancient Wandjina rock art galleries. Located a short walk from the beach, they are considered some of the finest in the Kimberley. We visit the rock art galleries when Traditional Owners are available to guide us. Doubtful Bay is the traditional country of the Worrora people who follow the Wandjina, their god, law-maker, and creator. Images of Wandjina are found throughout the Kimberley, recording their stories, knowledge and culture in stone. Red Cone Creek flows gently downstream until it meets the small but impressive Ruby Falls. Named by local mariner Capt. Chris Trucker after his daughter, Red Cone Creek is carved through rock formations stacked atop each other like building blocks. These rock walls are great for climbing and

clambering over before reaching a series of freshwater swimming holes and waterfalls. The falls may be a gurgling torrent or a gentle trickle, depending on the time of the year. Other sites we aim to visit in Doubtful Bay include the mighty Steep Island and Ruby Falls at Red Cone Creek.

HORIZONTAL FALLS (GARAANNGADDIM) AND BUCCANEER ARCHIPELAGO

The Horizontal Falls are one of the Kimberley's biggest attractions and are a result of the mammoth 11m tides the Kimberley is renowned for. Naturalist David Attenborough described the Horizontal Falls as 'one of the greatest natural wonders of the world.' This natural phenomenon has been created as the ocean thunders through a narrow gorge in the McLarty Ranges. Water builds up on one side and is forcibly pushed through the bottleneck, creating a rushing horizontal waterfall of swiftly flowing seawater. Riding the rapids on our Zodiac inflatable tenders is one of the highlights of our Kimberley expedition cruises. Talbot Bay is at the heart of the Buccaneer Archipelago, where rocks on the 800 or so islands are estimated at over 2 billion years old. At Cyclone Creek, you will see evidence of massive geological forces in the impressive rock formations and cruise through the Iron Islands, past Koolan Island, before enjoying sunset drinks at Nares Point.

THE LACEPEDE ISLANDS

The Lacepede Islands are a protected class-A nature reserve and are significant as a seabird nesting rookery for brown boobies and roseate terns. Other species often sighted at the Lacepedes include Australian Pelicans, frigate birds, egrets and gulls. The four low-lying islands are also an important breeding and nesting habitat for green turtles. If weather and tide conditions are suitable, we will explore the lagoons by Xplorer and Zodiac tender vessels. As our incredible Kimberley



The Small Cruise Ship Collection

www.small-cruise-ships.com

small-cruise-ships.com

info@small-cruise-ships.com

adventures draw to a close, on our last evening aboard we enjoy the Captain's farewell drinks amongst new-found friends.

DAY 11: ARRIVE IN BROOME / DARWIN

Our incredible adventure along the Kimberley Coast concludes. Bid farewell to new-found friends, the Captain and crew. A post-cruise transfer to Broome CBD or Airport is included. Broome Arrival: Arrive in Broome this morning at 8:00am. A post-cruise transfer to Broome CBD or Airport is included. If you're not transferring directly to the airport why not spend the day visiting world-famous Cable Beach or stroll the historic streets of Chinatown in central Broome. Darwin Arrival: Arrive and disembark at Darwin's Fort Hill Wharf at 08:30am. Post cruise transfers to CBD hotels or the airport are included. If you're not transferring directly to the airport why not spend the day enjoying the tropical city of Darwin with its landscaped waterfront and harbourside Wave Pool.

Please Note:

This itinerary is an indication of the destinations we visit and activities on offer. Throughout the expedition we may make changes to the itinerary as necessary to maximise your expeditionary experience. Allowances may be made for seasonal variations, weather, tidal conditions, and any other event that may affect the operation of the vessel.



The Small Cruise Ship Collection

www.small-cruise-ships.com

small-cruise-ships.com

info@small-cruise-ships.com

YOUR SHIP: CORAL ADVENTURER

YOUR SHIP: Coral Adventurer

VESSEL TYPE:

LENGTH:

PASSENGER CAPACITY:

BUILT/REFURBISHED:

Launched in 2018 with her maiden voyage in 2019, Coral Adventurer has been designed and built to take you closer to unspoilt vistas in comfort, style and safety. A culmination of two years of design and three decades of passion for expedition cruising. BIGGER IS NOT BETTER At a time when cruise ships get larger and glitzier, we remain stubbornly compact and intimate. Our ships are designed to take you to unspoilt destinations not accessible to large ships. We want you to have the luxury of space, dine with whom you please, or find your quiet corner on deck. So Coral Adventurer has just 60 spacious cabins. This preserves the intimate atmosphere we are known for without sacrificing the stability and comfort of a true ocean going vessel. BUILT FOR DISCOVERY The Coral Adventurer features the trademark dual 'Xplorer' tenders cradled on a hydraulic platform slung off the back of the ship, enabling our guests to go ashore in comfort and ease. The shallow draft of the ship enables us to go closer to shore than larger ships. Together with a renowned expedition team, this new ship will offer the most advanced expedition capabilities of any small ship afloat. BUILT FOR COMFORT With active stabilisers dampening sea motion, mostly balcony cabins, and interiors designed with the colours and

textures of tropical Queensland, the Coral Adventurer is a comfortable ship. She features promenade decks, generous communal areas that accommodate all guests, a passenger elevator, and an open kitchen where you can observe our chefs whip up small batch cuisine from locally sourced ingredients. BUILT FOR PERSONAL SERVICE The Coral Adventurer will continue a proud tradition of Australian flagged vessels with friendly and professional Australian crew. The onboard atmosphere remains refreshingly informal and intimate. Take your seat at our bridge lounge, chat with the captain at your leisure or accompany our chefs on a market tour. Food and wine features Single seating dining area with communal 'wine table' finished with Australian stone; serving buffet breakfast and lunch, and multi-course table d'hote dinners Showcase galley visible to guests for fresh small-batch cuisine featuring Australian produce Multiple indoor and outdoor bars, including the Explorer bar on the sundeck for sunset drinks with 180 degree views Curated wine cellar featuring modestly priced boutique wines for daily drinking and exceptional vintage Australian reds. Guest comfort All outside guest cabins with en-suite bathrooms; majority have private balcony Active stabilisers to dampen sea motion Gym equipped with elliptical trainers and treadmills Passenger elevator Wi-Fi available in all

The Small Cruise Ship Collection
www.small-cruise-ships.com

01432 507 280 (within UK)

info@small-cruise-ships.com | small-cruise-ships.com



guest areas

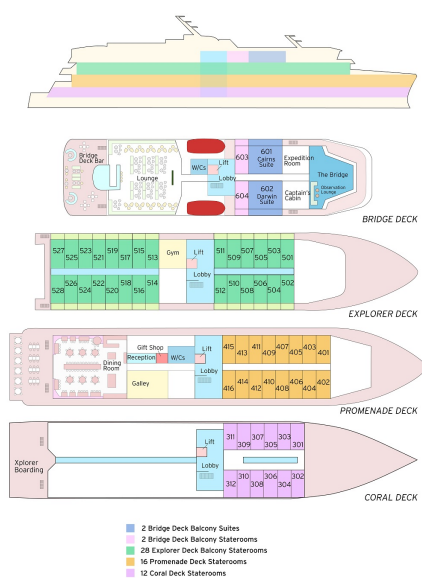
The Small Cruise Ship Collection

www.small-cruise-ships.com

small-cruise-ships.com

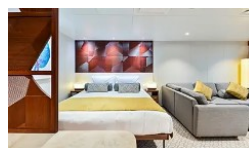
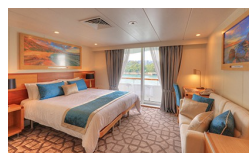
info@small-cruise-ships.com

INSIDE YOUR SHIP



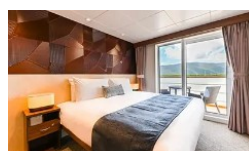
Bridge Deck Balcony Stateroom

Bridge Deck Balcony Suite



Coral Deck Stateroom

Explorer Deck Balcony Stateroom



Main Deck A Stateroom

Main Deck B Stateroom

Promenade A Stateroom

Promenade B Stateroom

The Small Cruise Ship Collection

www.small-cruise-ships.com

small-cruise-ships.com

info@small-cruise-ships.com

PRICING

19-Mar-2026 to 29-Mar-2026

Explorer Deck Balcony Stateroom	£10805 GBP pp
Bridge Deck Balcony Suite	£14455 GBP pp
Promenade Deck Stateroom	£8155 GBP pp
Coral Deck Stateroom	£6705 GBP pp

01-Apr-2026 to 11-Apr-2026

Explorer Deck Balcony Stateroom	£10805 GBP pp
Promenade Deck Stateroom	£8155 GBP pp
Coral Deck Stateroom	£6705 GBP pp
Bridge Deck Balcony Suite	£15455 GBP pp

09-Apr-2026 to 19-Apr-2026

Main Deck B Stateroom	£6495 GBP pp
Main Deck A Stateroom	£6855 GBP pp
Promenade A Stateroom	£8205 GBP pp
Bridge Deck Balcony Stateroom	£10205 GBP pp
Promenade B Stateroom	£7155 GBP pp

11-Apr-2026 to 21-Apr-2026

Bridge Deck Balcony Suite	£15455 GBP pp
Explorer Deck Balcony Stateroom	£10805 GBP pp
Promenade Deck Stateroom	£8155 GBP pp
Coral Deck Stateroom	£6705 GBP pp

19-Apr-2026 to 29-Apr-2026

Main Deck A Stateroom	£6855 GBP pp
Promenade A Stateroom	£8205 GBP pp
Bridge Deck Balcony Stateroom	£10205 GBP pp
Promenade B Stateroom	£7155 GBP pp
Main Deck B Stateroom	£6495 GBP pp

22-Apr-2026 to 02-May-2026

Explorer Deck Balcony Stateroom	£10805 GBP pp
Coral Deck Stateroom	£6705 GBP pp
Bridge Deck Balcony Suite	£15455 GBP pp
Promenade Deck Stateroom	£8155 GBP pp

23-Apr-2026 to 03-May-2026

Bridge Deck Balcony Suite	£14455 GBP pp
Promenade Deck Stateroom	£8155 GBP pp
Coral Deck Stateroom	£6705 GBP pp
Explorer Deck Balcony Stateroom	£10805 GBP pp

29-Apr-2026 to 09-May-2026

Main Deck B Stateroom	£6495 GBP pp
Main Deck A Stateroom	£6855 GBP pp
Promenade B Stateroom	£7155 GBP pp
Bridge Deck Balcony Stateroom	£10205 GBP pp
Promenade A Stateroom	£8205 GBP pp

The Small Cruise Ship Collection

www.small-cruise-ships.com

small-cruise-ships.com

info@small-cruise-ships.com

PRICING

02-May-2026 to 12-May-2026

Explorer Deck Balcony Stateroom	£10805 GBP pp
Promenade Deck Stateroom	£8155 GBP pp
Coral Deck Stateroom	£6705 GBP pp
Bridge Deck Balcony Suite	£15455 GBP pp

04-May-2026 to 14-May-2026

Coral Deck Stateroom	£6705 GBP pp
Explorer Deck Balcony Stateroom	£10805 GBP pp
Bridge Deck Balcony Suite	£14455 GBP pp
Promenade Deck Stateroom	£8155 GBP pp

09-May-2026 to 19-May-2026

Promenade A Stateroom	£8205 GBP pp
Bridge Deck Balcony Stateroom	£10205 GBP pp
Promenade B Stateroom	£7155 GBP pp
Main Deck B Stateroom	£6495 GBP pp
Main Deck A Stateroom	£6855 GBP pp

13-May-2026 to 23-May-2026

Coral Deck Stateroom	£6705 GBP pp
Promenade Deck Stateroom	£8155 GBP pp
Bridge Deck Balcony Suite	£15455 GBP pp
Explorer Deck Balcony Stateroom	£10805 GBP pp

14-May-2026 to 24-May-2026

Coral Deck Stateroom	£6705 GBP pp
Explorer Deck Balcony Stateroom	£10805 GBP pp
Bridge Deck Balcony Suite	£14455 GBP pp
Promenade Deck Stateroom	£8155 GBP pp

20-May-2026 to 30-May-2026

Promenade A Stateroom	£8205 GBP pp
Bridge Deck Balcony Stateroom	£10205 GBP pp
Promenade B Stateroom	£7155 GBP pp
Main Deck B Stateroom	£6495 GBP pp
Main Deck A Stateroom	£6855 GBP pp

23-May-2026 to 02-Jun-2026

Explorer Deck Balcony Stateroom	£10805 GBP pp
Coral Deck Stateroom	£6705 GBP pp
Bridge Deck Balcony Suite	£15455 GBP pp
Promenade Deck Stateroom	£8155 GBP pp

24-May-2026 to 03-Jun-2026

Explorer Deck Balcony Stateroom	£10805 GBP pp
Coral Deck Stateroom	£6705 GBP pp
Bridge Deck Balcony Suite	£14455 GBP pp
Promenade Deck Stateroom	£8155 GBP pp

The Small Cruise Ship Collection

www.small-cruise-ships.com

small-cruise-ships.com

info@small-cruise-ships.com

PRICING

30-May-2026 to 09-Jun-2026

Promenade A Stateroom	£8205 GBP pp
Bridge Deck Balcony Stateroom	£10205 GBP pp
Promenade B Stateroom	£7155 GBP pp
Main Deck A Stateroom	£6855 GBP pp
Main Deck B Stateroom	£6495 GBP pp

03-Jun-2026 to 13-Jun-2026

Bridge Deck Balcony Suite	£14455 GBP pp
Promenade Deck Stateroom	£8155 GBP pp
Explorer Deck Balcony Stateroom	£10805 GBP pp
Coral Deck Stateroom	£6705 GBP pp

03-Jun-2026 to 13-Jun-2026

Coral Deck Stateroom	£6705 GBP pp
Bridge Deck Balcony Suite	£15455 GBP pp
Promenade Deck Stateroom	£8155 GBP pp
Explorer Deck Balcony Stateroom	£10805 GBP pp

09-Jun-2026 to 19-Jun-2026

Main Deck A Stateroom	£6855 GBP pp
Promenade A Stateroom	£8205 GBP pp
Bridge Deck Balcony Stateroom	£10205 GBP pp
Promenade B Stateroom	£7155 GBP pp
Main Deck B Stateroom	£6495 GBP pp

13-Jun-2026 to 23-Jun-2026

Bridge Deck Balcony Suite	£15455 GBP pp
Explorer Deck Balcony Stateroom	£10805 GBP pp
Coral Deck Stateroom	£6705 GBP pp
Promenade Deck Stateroom	£8155 GBP pp

14-Jun-2026 to 24-Jun-2026

Coral Deck Stateroom	£6705 GBP pp
Explorer Deck Balcony Stateroom	£10805 GBP pp
Promenade Deck Stateroom	£8155 GBP pp
Bridge Deck Balcony Suite	£14455 GBP pp

19-Jun-2026 to 29-Jun-2026

Promenade A Stateroom	£8205 GBP pp
Bridge Deck Balcony Stateroom	£10205 GBP pp
Promenade B Stateroom	£7155 GBP pp
Main Deck B Stateroom	£6495 GBP pp
Main Deck A Stateroom	£6855 GBP pp

24-Jun-2026 to 04-Jul-2026

Explorer Deck Balcony Stateroom	£10805 GBP pp
Promenade Deck Stateroom	£8155 GBP pp
Coral Deck Stateroom	£6705 GBP pp
Bridge Deck Balcony Suite	£15455 GBP pp

The Small Cruise Ship Collection

www.small-cruise-ships.com

small-cruise-ships.com

info@small-cruise-ships.com

PRICING

24-Jun-2026 to 04-Jul-2026

Promenade Deck Stateroom	£8155 GBP pp
Coral Deck Stateroom	£6705 GBP pp
Explorer Deck Balcony Stateroom	£10805 GBP pp
Bridge Deck Balcony Suite	£14455 GBP pp

30-Jun-2026 to 10-Jul-2026

Bridge Deck Balcony Stateroom	£10205 GBP pp
Promenade B Stateroom	£7155 GBP pp
Main Deck B Stateroom	£6495 GBP pp
Main Deck A Stateroom	£6855 GBP pp
Promenade A Stateroom	£8205 GBP pp

04-Jul-2026 to 14-Jul-2026

Explorer Deck Balcony Stateroom	£10805 GBP pp
Bridge Deck Balcony Suite	£14455 GBP pp
Promenade Deck Stateroom	£8155 GBP pp
Coral Deck Stateroom	£6705 GBP pp

04-Jul-2026 to 14-Jul-2026

Explorer Deck Balcony Stateroom	£10805 GBP pp
Bridge Deck Balcony Suite	£15455 GBP pp
Promenade Deck Stateroom	£8155 GBP pp
Coral Deck Stateroom	£6705 GBP pp

10-Jul-2026 to 20-Jul-2026

Bridge Deck Balcony Stateroom	£10205 GBP pp
Promenade B Stateroom	£7155 GBP pp
Promenade A Stateroom	£8205 GBP pp
Main Deck B Stateroom	£6495 GBP pp
Main Deck A Stateroom	£6855 GBP pp

14-Jul-2026 to 24-Jul-2026

Explorer Deck Balcony Stateroom	£10805 GBP pp
Bridge Deck Balcony Suite	£14455 GBP pp
Promenade Deck Stateroom	£8155 GBP pp
Coral Deck Stateroom	£6705 GBP pp

15-Jul-2026 to 25-Jul-2026

Bridge Deck Balcony Suite	£15455 GBP pp
Explorer Deck Balcony Stateroom	£10805 GBP pp
Coral Deck Stateroom	£6705 GBP pp
Promenade Deck Stateroom	£8155 GBP pp

20-Jul-2026 to 30-Jul-2026

Promenade B Stateroom	£7155 GBP pp
Main Deck B Stateroom	£6495 GBP pp
Main Deck A Stateroom	£6855 GBP pp
Promenade A Stateroom	£8205 GBP pp
Bridge Deck Balcony Stateroom	£10205 GBP pp

The Small Cruise Ship Collection

www.small-cruise-ships.com

small-cruise-ships.com

info@small-cruise-ships.com

PRICING

25-Jul-2026 to 04-Aug-2026

Promenade Deck Stateroom	£8155 GBP pp
Coral Deck Stateroom	£6705 GBP pp
Bridge Deck Balcony Suite	£15455 GBP pp
Explorer Deck Balcony Stateroom	£10805 GBP pp

25-Jul-2026 to 04-Aug-2026

Promenade Deck Stateroom	£8155 GBP pp
Coral Deck Stateroom	£6705 GBP pp
Explorer Deck Balcony Stateroom	£10805 GBP pp
Bridge Deck Balcony Suite	£14455 GBP pp

30-Jul-2026 to 09-Aug-2026

Bridge Deck Balcony Stateroom	£10205 GBP pp
Promenade A Stateroom	£8205 GBP pp
Promenade B Stateroom	£7155 GBP pp
Main Deck B Stateroom	£6495 GBP pp
Main Deck A Stateroom	£6855 GBP pp

05-Aug-2026 to 15-Aug-2026

Explorer Deck Balcony Stateroom	£10805 GBP pp
Promenade Deck Stateroom	£8155 GBP pp
Coral Deck Stateroom	£6705 GBP pp
Bridge Deck Balcony Suite	£15455 GBP pp

10-Aug-2026 to 20-Aug-2026

Promenade B Stateroom	£7155 GBP pp
Main Deck B Stateroom	£6495 GBP pp
Main Deck A Stateroom	£6855 GBP pp
Promenade A Stateroom	£8205 GBP pp
Bridge Deck Balcony Stateroom	£10205 GBP pp

15-Aug-2026 to 25-Aug-2026

Coral Deck Stateroom	£6705 GBP pp
Bridge Deck Balcony Suite	£15455 GBP pp
Explorer Deck Balcony Stateroom	£10805 GBP pp
Promenade Deck Stateroom	£8155 GBP pp

20-Aug-2026 to 30-Aug-2026

Promenade A Stateroom	£8205 GBP pp
Bridge Deck Balcony Stateroom	£10205 GBP pp
Promenade B Stateroom	£7155 GBP pp
Main Deck B Stateroom	£6495 GBP pp
Main Deck A Stateroom	£6855 GBP pp

26-Aug-2026 to 05-Sep-2026

Bridge Deck Balcony Suite	£15455 GBP pp
Explorer Deck Balcony Stateroom	£10805 GBP pp
Promenade Deck Stateroom	£8155 GBP pp
Coral Deck Stateroom	£6705 GBP pp



The Small Cruise
Ship Collection

www.small-cruise-ships.com

small-cruise-ships.com

info@small-cruise-ships.com

PRICING

12-Apr-2027 to 22-Apr-2027

Coral Deck Stateroom	£5909 GBP pp
Explorer Deck Balcony Stateroom	£9309 GBP pp
Bridge Deck Balcony Suite	£12709 GBP pp
Promenade Deck Stateroom	£7185 GBP pp



The Small Cruise
Ship Collection

www.small-cruise-ships.com

01432 507 280 (within UK)

info@small-cruise-ships.com | small-cruise-ships.com