



The Small Cruise Ship Collection

www.small-cruise-ships.com

small-cruise-ships.com

info@small-cruise-ships.com

KIMBERLEY COAST ADVENTURE CRUISE: AN UNFORGETTABLE DARWIN TO DARWIN KIMBERLEY COAST CRUISE

Explore Australia's iconic Kimberley Coast, where ancient rock art galleries and traditions meet time-forgot landscapes home to unique wildlife and endless adventures with pioneering small ship expedition cruise company Heritage Expeditions. Best explored by expedition vessel, our luxurious, 140-guest expedition ship Heritage Adventurer was purpose-built for adventures like cruising Australia's wild and remote Kimberley Coast. Her smaller size allows for an intimate, up-close exploration and immersion of this rugged wilderness dwarfed by nature on an unfathomable scale. During our voyage, we plan to discover the unforgettable spectacle of King George Falls cascading 80-metres down 2,000-million-year-old towering cliffs. We also expect to explore the outdoor galleries showcasing the 60,000-year-old Aboriginal rock art of the Gwion Gwion and Wandjina people, World War II relics and early European explorer history. At Talbot Bay experience the power of the region's massive tidal movements and the world's only Horizontal Falls, described by David Attenborough as "one of the greatest wonders of the natural world". Marvel at the world's largest inshore reef system at nearby Montgomery Reef, which 'rises' out of the water with the falling tide. On Boongaree Island, look for Monjon (the smallest member of the rock-wallaby family), Northern Quoll, Scaly-tailed Possum and the Northern Leaf-nosed Bat as we explore stunning weather-worn landscapes, while the little-known Osborn Islands promise an authentic expedition adventure. Hidden among jagged sandstone monoliths, the final resting place of the remarkably preserved WWII Douglas C-53 Skytrooper awaits discovery at Vansittart Bay. Enjoy astounding wildlife encounters

The Small Cruise Ship Collection

www.small-cruise-ships.com

01432 507 280 (within UK)

info@small-cruise-ships.com | small-cruise-ships.com



The Small Cruise Ship Collection

www.small-cruise-ships.com

small-cruise-ships.com

info@small-cruise-ships.com

and observations of the region's iconic saltwater crocodiles and marsupials and explore one of the world's largest and most pristine mangrove systems along the Hunter River, home to White-bellied Sea Eagles, Ospreys, Red-headed Honeyeater, Blue-spotted Mudskippers, Fiddler Crabs and more. Discover and explore ancient landscapes like no other as we expedition cruise the untouched beauty of the Kimberley on this unforgettable

adventure.

ITINERARY

Day 1 - Darwin

Join Heritage Adventurer this afternoon at Darwin Port, Australia's 'northern gateway' famous for its glittering harbour, World War II history and enviable tropical outdoor lifestyle. The captain and expedition team will be waiting to greet you on arrival and show you to your accommodation. You will have time to settle in and familiarise yourself with the ship; we will also take the opportunity to introduce you to your expedition team and our voyage plans. You are invited to join the expedition team in the Observation Lounge and up on the Observation Deck as we set sail for King George River.

Day 2 - King George River

Our approach to the King George River gorge is not to be missed and best experienced out on the Observation Deck as the towering 2,000-million-year-old Warton Sandstone cliffs dwarf our vessel. Navigating this scenic stretch of water by Zodiac, there's much to take in, passing the ever-changing eroded rockfaces as we cruise deeper into the gorge, marvelling at the untouched beauty of this iconic waterway. As we reach the end of the gorge, nothing will prepare you for the grand scale

spectacle of the Kimberley's highest single-drop waterfall, King George Falls. The King George River plummets 80 metres over the edge of towering ancient red sandstone cliffs into tidal waters. This is undoubtedly one of Australia's most awe-inspiring natural wonders. The twin falls, known as male and female Rainbow Serpents, or Wunkurr by the Balangarra people, are fed by wet season rains and rightly hold a special place in indigenous lore. While here, we will learn about how this natural wonder was created and enjoy a closer look.

Day 3 - Osborn Islands

Today is an authentic expedition day of adventure as we sail into Admiralty Gulf, location of the Osborn Islands. During our time here, we plan to explore the islands and discover their rich Indigenous history through ancient rock art galleries, pearl farming and look for a swimming hole to cool down in. We also plan to search for the historic 1892 wreck of steam yacht SS Sunbeam, which accidentally ran aground on a mud bank while its captain raced an irreparable leak, trying to run the vessel ashore.

Day 4 - Swift Bay

Today, our Kimberley expedition cruise sees us navigating the scattered islands known as the Bonaparte Archipelago, which stretches almost 150 kilometres along the dramatic coastline. Our destination is the remote and unspoiled inlet of T-shaped Swift Bay with its sandy beaches, ominous sea-worn caves and mangroves we plan to explore, including Lucifer's Labyrinth. A Zodiac cruise here allows a closer look at this incredible coastline, where we will also likely observe saltwater crocodiles. On land, several rock art galleries display the unique Wandjina and Gwion Gwion styles on a large scale, denoting the region's cultural importance. There is also the opportunity to experience

The Small Cruise Ship Collection
www.small-cruise-ships.com

01432 507 280 (within UK)

info@small-cruise-ships.com | small-cruise-ships.com



The Small Cruise Ship Collection

www.small-cruise-ships.com

small-cruise-ships.com

info@small-cruise-ships.com

the grandeur of the iconic Mitchell Falls on a thrilling scenic heli-flight (optional extra). This is the only way to experience the Kimberley's famous four-tiered falls and includes a landing on the stunning Mitchell Plateau, one of the most scenic and biologically important areas in Australia. Here we will explore this incredible sandstone landscape carved by the Mitchell River.

Day 5 - Bigge Island

This morning we explore the sites of ancient Aboriginal rock art on Bigge Island and the historic Mermaid Boab Tree, which bears the name of the HMC Mermaid. This was famously carved into its trunk while the ship was beached there undergoing emergency repairs during Philip Parker King's third voyage of discovery of the region in 1820. Now measuring some 3 metres wide and National Heritage listed, the tree offers a glimpse into Australian colonial history, while an old Makassan Islamic prayer alcove can be found behind the tree. During our time here, we will also explore the jaw-slackening, otherworldly sandstone coastline of York Sound with its incredible sea caves and fascinating wildlife.

Days 6 & 7 - Collier Bay

Located at the eastern end of the Buccaneer Archipelago, and only accessible by sea, we have two days to explore the ancient land- and seascapes of Collier Bay and its astounding natural attractions. At Talbot Bay, we will experience the power of the region's massive tidal movements which have shaped the landscape, most famously at the world's only Horizontal Falls. Here we will witness what David Attenborough described as "one of the greatest wonders of the natural world", as water trapped in an inland bay thunders between two narrow chasms as the tide drops more than 14 metres on the other side. This creates

spectacular falls, whirlpools and boiling white water. At nearby Cyclone Creek, we will explore the twisted geological folds of the ancient seabed and hope to see the inquisitive Tawny Nurse Sharks among the incredible marine life on display. Another tidal spectacle awaits at Montgomery Reef at the bay's centre, the world's largest inshore reef system, we plan to capture the magic of observing this enormous reef 'rise' from the ocean as the tide falls. This creates torrents and waterfalls up to 3-metres high, displacing marine life igniting a feeding frenzy as predators above and below the water descend. At Freshwater Cove, shoreline explorations of the caves and grottos reveal a multitude of ancient landscapes and rock art galleries.

Day 8 - Hunter River

During our explorations of the Hunter River today it will quickly become apparent why this winding, 30-kilometre stretch of water is widely considered to be one of the highlights of the Kimberley Coast. Tucked into the north-east corner of Prince Frederick Harbour, an enormous bay puts the Kimberley's epic scale into perspective. This scenic wonderland is dotted with islands and flanked with wildlife-filled mangrove-lined rivers, savanna woodlands and patches of lush monsoon rainforest, courtesy of receiving the lion's share of the region's rainfall, and soaring red cliffs. At the river's mouth the unrestrained grandeur of 200-metre-high sandstone escarpment, Kampamantiya, keeps silent sentry, welcoming us into this otherworldly realm we will be exploring today. Fed by two 90-metre waterfalls, the Hunter and the Donkin, Hunter River is home to one of the largest and most pristine mangrove systems in the world. Zodiac cruising Porosus Creek could see us spotting diverse wildlife, including White-bellied Sea Eagles, Ospreys, Great-billed Herons, Eastern Reef Egrets, Red-headed Honeyeaters,

The Small Cruise Ship Collection

www.small-cruise-ships.com

01432 507 280 (within UK)

info@small-cruise-ships.com | small-cruise-ships.com



The Small Cruise Ship Collection

www.small-cruise-ships.com

small-cruise-ships.com

info@small-cruise-ships.com

Blue-spotted Mudskippers, Fiddler Crabs and more. As well as the iconic saltwater crocodile *Crocodylus Porosus*, of which the Hunter River boasts the Kimberley's largest population. While here we will also explore Boongaree Island (Wunundarra or Bunjinii), home to Monjon (the smallest member of the rock-wallaby family), Northern Quoll, Scaly-tailed Possum, Northern Leaf-nosed Bat, stunning sandstone landscapes and unexplored mangrove channels.

Day 9 - Vansittart Bay

Beautiful islands, pristine white sand beaches lapped by turquoise waters, secluded coves and stunning scenery abound in Vansittart Bay. It is also the location of a historical World War II site and incredible ancient Aboriginal rock art. Named after the Chancellor of Exchequer by early explorer Rear Admiral Philip Parker King, this striking, naturally protected bay is framed by scattered jagged sandstone monoliths. The Bay is also the final resting place of the preserved skeleton of a WWII Douglas C-53 Skytrooper (DC-3), which crash landed onto the saltpan after running out of fuel during a mercy mission to evacuate four Dutch citizens from Java. On Jar Island, the location of ancient outdoor Aboriginal Gwion Gwion art galleries set among fascinating caves and rock formations. Much of the rock art tucked under ledges and featured on cave walls is estimated to be up to 40,000 years old. They are remarkably preserved, protected from the elements. The island is also home to some interesting flora and fauna, including the Golden-backed Tree Rat, echidnas and birdlife. Discover a bounty of anthropological and historical wonders in Vansittart Bay.

Day 10 - At Sea

At sea en route to Darwin Port, relax and reflect on our amazing adventure. This is also a good opportunity to edit any remaining

photos while they are fresh in your mind, and you have the experience of our expedition team on board for questions about the Kimberley. We will recap the highlights of our expedition and enjoy a farewell dinner tonight as we sail to our final port.

Day 11 - Darwin

This morning sees Heritage Adventurer returning to Darwin Port. After breakfast there will be a complimentary coach to a central hotel or to Darwin International Airport. To allow time for disembarkation procedures and travel from Darwin, we do not recommend booking flights departing before 1300 hours. During our voyage, circumstances may make it necessary or desirable to deviate from the proposed itinerary. This can include poor weather and opportunities for making unplanned excursions. Your Expedition Leader will keep you fully informed. Please note: Voyages are planned and scheduled pending final regulatory approval.

Please note:

Itineraries are subject to change.

The Small Cruise Ship Collection

www.small-cruise-ships.com

01432 507 280 (within UK)

info@small-cruise-ships.com | small-cruise-ships.com



The Small Cruise Ship Collection

www.small-cruise-ships.com

small-cruise-ships.com

info@small-cruise-ships.com

YOUR SHIP: HERITAGE ADVENTURER

YOUR SHIP: Heritage Adventurer

VESSEL TYPE:

LENGTH:

PASSENGER CAPACITY:

BUILT/REFURBISHED:

Heritage Adventurer is a true pioneering expedition vessel of exceptional pedigree. Often referred to as the 'Grande Dame of Polar Exploration' due to her celebrated history and refined design, she was purpose-built for adventure in 1991 at Finland's Rauma shipyard and specifically designed for Polar exploration. Setting a peerless standard in authentic expedition travel, Heritage Adventurer (formerly known as MS Hanseatic) combines the highest passenger ship ice-class rating (1A Super) with an impressive history of Polar exploration. Having held records for the most northern and southern Arctic and Antarctic navigations, and for traversing both the Northwest and Northeast Passages, makes Heritage Adventurer perfect for pioneering experiential expedition travel. Originally designed to accommodate 184 guests, Heritage Adventurer now welcomes just 140 expeditioners ensuring spacious, stylish and comfortable voyages, while a fleet of 14 Zodiacs ensures all guests are able to maximise their expedition adventure. Heritage Adventurer proudly continues our traditions of exceptional, personalised expedition experiences as Heritage Expeditions flagship. Observation Lounge - One of the most celebrated and best-known features of Heritage Adventurer is the awe-inducing

Observation Lounge, Library and Bar. Located on Deck 7 and perched directly above the Bridge, enjoy sweeping 270-degree views through floor to ceiling windows, perfect for wildlife spotting and quick access to the outer deck. Bring your binoculars to spot wildlife, observe the ever-changing landscape, write in your journal or relax with a book. Observation Deck - Enjoy 360-degree views from the highest point on the ship. The Observation Deck sits above the Observation Lounge and provides exceptional outside viewing options. Stretching the full width of the vessel, this is the perfect spot to take in the surrounding land and seascapes. Perfect on a sunny day, recline in the comfortable sun loungers protected from the wind and elements and watch your voyage unfold. The Bridge - No expedition is complete without visiting Heritage Adventurer's busy nerve centre. Located on Deck 6, Heritage Expeditions' Open Bridge Policy means you are welcome to observe the Captain and crew at work while enjoying some of the ship's best views. It's a fascinating place to learn about navigation and vessel operations, however please note the Bridge will be closed when departing or arriving at port. Dining Room - Indulge in fine international cuisine from our talented chefs in the lavish surrounds of our Dining Room on Deck 4. Sensational 270-degree views provide a stunning backdrop to meals here along with an international wine list featuring many outstanding regional wines. With relaxed seating arrangements, all guests can enjoy dining in a single sitting from hearty breakfasts setting you up for the day's adventure to sumptuous lunches and multi-course evening dining. Bistro - Simple fast and delicious meals and snacks are on offer in our relaxed

The Small Cruise Ship Collection

www.small-cruise-ships.com

01432 507 280 (within UK)

info@small-cruise-ships.com | small-cruise-ships.com

The Small Cruise Ship Collection

www.small-cruise-ships.com

small-cruise-ships.com

info@small-cruise-ships.com

Bistro on Deck 6. Perfect for early risers to enjoy tea, coffee and light breakfast options the Bistro provides great views and opens directly onto a covered and heated teak-deck outdoor dining area. The Bar and Lounge - The social hub of Heritage Adventurer, the Bar and Lounge on Deck 5 features seating for all guests. Enjoy a beverage at the bar, sink into an armchair, relax on one of the many spacious loungers and watch the world go by through the panoramic windows or make new friends at the communal seating. This multi-tasking space also doubles as the location of daily briefings and evening recaps with the expedition team. The Gym - Featuring spectacular ocean views, the well-equipped gym is adjacent to the pool, hot tub and sauna in Deck 7's wellbeing zone. Maintain your routine with an elliptical cross trainer, treadmill, rowing machine, stationary bikes, TRX as well as free weights, yoga mats and fitness balls. Towels are provided with change room and shower amenities nearby. Sauna and Steam Room - True to her Nordic origins, Heritage Adventurer features a dry-heat Finnish sauna and European steam room on Deck 7. Perfect for warming up post Polar plunge or unwinding after a day's adventures, the sauna and steam room include change room facilities, showers and towels. Swimming Pool and Hot Tub - Surrounded by relaxed teak seating including sun loungers, the open-air saltwater pool can be heated or chilled. Encased in glass the hot tub ensures all-weather use, perfect for those who like to relax with a view following a day of exploring. Lectures and Presentations - Enjoy informative and entertaining lectures on history, biology, wildlife, and ecology in the comfort of the Presentation Theatre. With state-of-the-art audio-visual equipment, our world-renowned expedition team will bring your adventure to life through interactive presentations and



discussions.

The Small Cruise Ship Collection

www.small-cruise-ships.com

01432 507 280 (within UK)

info@small-cruise-ships.com | small-cruise-ships.com

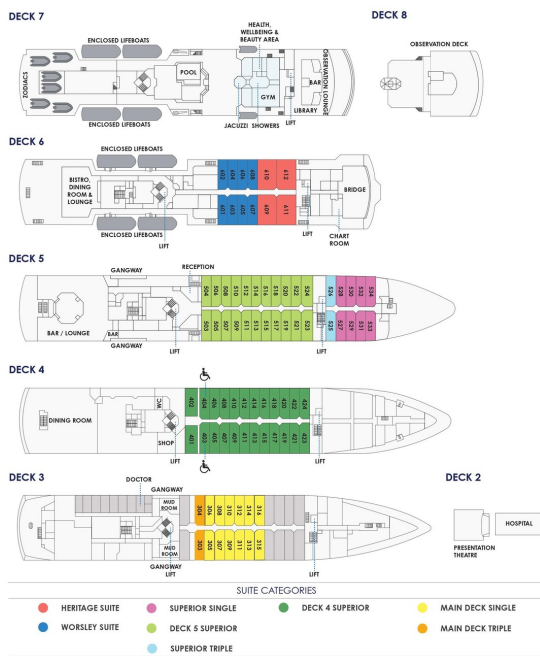
The Small Cruise Ship Collection

www.small-cruise-ships.com

small-cruise-ships.com

info@small-cruise-ships.com

INSIDE YOUR SHIP



Deck 4 Superior

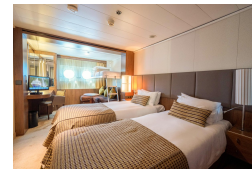


Deck 5 Superior



Heritage Suite

Main Deck Single



Main Deck Triple

Superior Single

Superior Triple

Worsley Suite



The Small Cruise Ship Collection

www.small-cruise-ships.com

small-cruise-ships.com

info@small-cruise-ships.com

PRICING

05-Jul-2027 to 15-Jul-2027

Main Deck Triple	£4896 GBP pp
Superior Triple	£5256 GBP pp
Deck 4 Superior	£6176 GBP pp
Deck 5 Superior	£6456 GBP pp
Main Deck Single	£7976 GBP pp
Worsley Suite	£8336 GBP pp
Superior Single	£8336 GBP pp
Heritage Suite	£10536 GBP pp