

The Small Cruise Ship Collection

www.small-cruise-ships.com

small-cruise-ships.com

info@small-cruise-ships.com

JAPAN'S SPLENDOUR IN FULL BLOOM - SMALL SHIP CRUISE

Between futuristic design and centuries-old temples, food stalls and glittering shopping streets, Zen gardens and unspoilt landscapes, Southeast Asia's cities pulsate to their own rhythm - let yourself be caught up in the atmosphere.



ITINERARY

Day 1 Yokohama/Japan Overnight stay on board

Day 2 Yokohama/Japan, departure 18.00 hrs

Yokohama, once a small fishing village, opened up to international trade in 1859 as one of Japan's first ports and rapidly developed into a cosmopolitan city. Today, with over three million inhabitants, it is the second-largest city in the country. In the historic Yamate district, you can discover elegant 19th-century Western-style villas. The highly modern Minato

The Small Cruise Ship Collection

www.small-cruise-ships.com

01432 507 280 (within UK)

info@small-cruise-ships.com | small-cruise-ships.com



The Small Cruise Ship Collection

www.small-cruise-ships.com

small-cruise-ships.com

info@small-cruise-ships.com

Mirai 21 harbour district, with its futuristic skyline, shopping centres and renowned Yokohama Museum of Art, provides an exciting contrast. The Sankeien Garden in the south of the city offers peace and classic beauty - a spacious landscape park with traditional buildings, ponds, bridges and blossoming paths.

Day 3 Shimizu/Japan, 08.00 - 20.00 hrs

Shimizu, at the foot of the imposing Mount Fuji volcano, the highest mountain in Japan, is surrounded by breathtaking landscapes of green tea plantations and thick forests. For centuries, Mount Fuji has had great spiritual significance for the Japanese and it is one of the greatest symbols of Japan worldwide. The Shizuoka Prefecture, famous for being the leading tea-producing area in Japan since the 12th century, is the perfect place for a trip into nature. The coastline offers picturesque views and the hot springs, or onsen, are a relaxing place to spend time by the sea.

Day 4 Relaxation at sea

Day 5 Kochi (Shikoku)/Japan, 08.00 - 18.00 hrs

The port city of Kochi on the sunny south coast of the Japanese island of Shikoku is known for its relaxed atmosphere, traditional culture and spectacular natural scenery between the mountains and the Pacific Ocean. A visit to the imposing Kochi Castle, one of the few original castles in Japan preserved in its traditional 17th-century wooden construction, brings history to life. The bustling Hirome Market, open all year round, is located nearby. In the covered market hall, you can enjoy typical specialities such as katsuo no tataki, ramen and regional sakes at the many small stalls.

Day 6 Hososhima/Kyushu/Japan, 08.00 - 18.00 hrs

Hososhima, the gateway to Kyushu, invites visitors to discover the beauty of Japan's third-largest island. The landscape is dotted with mighty volcanoes, hot springs and traditional temples, which reflect the unique connection between nature and culture here. In the centre of Hososhima, you will find plenty of shops and restaurants to wander around and while away some time. The Katsuura Umikaze Park on the sea is a wonderful place to relax, with the sea breeze and views of the coastline drawing visitors under its spell. Hososhima has its own special way of combining modern life with the impressive natural scenery of Kyushu.

Day 7 Kagoshima/Japan, 08.00 - 18.00 hrs

Just a few miles of sea separate Kagoshima on the island of Kyushu from the active Sakurajima volcano - a sight that fascinates visitors with the impressive power of nature. Kagoshima itself is a mix of traditional garden art and modern shopping districts, with the city's exciting history and vibrant urban life blending seamlessly together. Excellent restaurants are a great place to try the region's freshly caught delicacies. The surrounding area also offers some unique natural scenery: the beaches of Amami-Oshima, the ancient forests of Yakushima and the Kirishima group of volcanoes are genuine highlights. Geological activity in the area produces numerous hot springs, with bath houses making Kagoshima one of the largest areas for onsens in Japan - perfect for relaxing and enjoying.

Day 8 Nagasaki/Japan, 08.00 - 18.00 hrs

Nagasaki is a place steeped in history and cultural treasures. Glover Garden, a beautiful park with villas dating back to the Meiji era, reflects the rich history of this vibrant city. Impressive temples such as Sofuku-ji, built in the 17th century by Chinese

The Small Cruise Ship Collection
www.small-cruise-ships.com

01432 507 280 (within UK)

info@small-cruise-ships.com | small-cruise-ships.com



The Small Cruise Ship Collection

www.small-cruise-ships.com

small-cruise-ships.com

info@small-cruise-ships.com

immigrants, and the striking Meganebashi arched stone bridge, which looks like a pair of glasses with its reflection in the water, are waiting to be discovered. A trip up the Inasayama by cable car offers breathtaking panoramic views and an unforgettable experience. As well as all these sights, the Peace Park and the Atom Bomb Museum are reminders of the tragic events when the second atomic bomb was dropped on Nagasaki in 1945 and of the rebuilding of the city to make Nagasaki what it has become today.

Day 9 Relaxation at sea

Day 10 Naha/Okinawa/Japan, 07.00 - 14.00 hrs

The very special way of life in Okinawa combines exoticism, tradition and a warm welcome. The Japanese prefecture consists of around 160 islands, only 49 of which are inhabited. The relaxed way of life, also known as "Okinawa Time", creates a special atmosphere and is the secret to the long lifespan of many of its inhabitants. Naha, the capital of Okinawa, is the gateway to the islands and offers cultural highlights including Shuri Castle, a UNESCO World Heritage Site. The Shinto Naminoue Shrine overlooks Naminoue Beach, offering a spectacular view over the sea - it is another place to appreciate the unique charm of the island.

Day 11 Ishigaki/Japan, 08.00 - 18.00 hrs

The tropical island of Ishigaki in the south of Japan is part of the Yaeyama Archipelago in the Okinawa Prefecture. Located about 2,000 km (1,243 mi.) away from the hustle and bustle of Tokyo, it has a pleasantly mild climate, idyllic sandy beaches and a turquoise sea. This relaxed paradise for beach and nature lovers offers beautiful hiking trails and stunning views of the surrounding Yaeyama Islands. The limestone caves of Ishigaki

are particularly impressive, with their bizarrely shaped stalactites and underground passages offering fascinating insights into thousands of years of geological history.

Day 12 Keelung/Taiwan, 07.00 - 17.00 hrs

Taipei's skyline is now characterised by modern office skyscrapers and luxury apartment complexes - the result of the economic boom during the second half of the 20th century. Despite all the modernisation, tradition still has its place here: worshippers pray in ancient temples and religious processions regularly take place in the city's streets. Taipei 101, the world's tallest building until 2007, is particularly striking: the skyscraper inspired by bamboo shoots symbolises the connection between the old and the new and has become a landmark of the city.

Day 13 Kaohsiung/Taiwan, 12.00 - 21.00 hrs

Kaohsiung turns out to be a lively port city that wonderfully combines modern architecture and Far Eastern tranquillity. The promenade along the Love River invites you to while away some time, and green parks throughout the bustling city serve as peaceful oases. The impressive Fo Guang Shan Buddha Museum, with its gigantic statue and venerable tooth relic of Buddha, provides an in-depth insight into the traditions that are still practised today. In the evening hours, Kaohsiung shines in the most colourful hues: the luminous dragon and tiger pagodas on the shore of the Lotus Lake, connected to the shore by a zigzag bridge, are a particular gem. And all this can be experienced particularly intensely - thanks to a long lay time.

Days 14 - 15 Relaxation at sea

Day 16 Chan May/Vietnam, 07.30 - 09.30 hrs (stop for excursion) Da Nang/Vietnam, arrival 12.30 hrs

The Small Cruise Ship Collection

www.small-cruise-ships.com

01432 507 280 (within UK)

info@small-cruise-ships.com | small-cruise-ships.com



The Small Cruise Ship Collection

www.small-cruise-ships.com

small-cruise-ships.com

info@small-cruise-ships.com

Da Nang, in central Vietnam, reveals its charm as a vibrant centre with an important history and modern lifestyle. The impressive cultural relics of the Cham dynasty, which once ruled over Southeast Asia, tell the tale of a long and rich past. The Cham Museum offers interesting insights into this period. The long stretch of beach at Da Nang is a great place to enjoy the sun and let your mind drift. Just a stone's throw away are the picturesque trading port of Hoi An and the Imperial City of Hue, which draws visitors under its spell thanks to its magical location on the romantic Perfume River and its cultural heritage. Take your time to soak up the atmosphere, as the ship will stay overnight.

Day 17 Da Nang/Vietnam, departure 19.00 hrs

Day 18 Relaxation at sea

Day 19 Ho Chi Minh City (Saigon)/Vietnam, arrival 12.00 hrs Overnight stay on board

The economic heart of Vietnam beats in Ho Chi Minh City, a metropolis located in the south of the country at the mouth of the Saigon River. Formerly known as Saigon, it was renamed after the reunification of north and south Vietnam in 1976 in honour of the former president, Ho Chi Minh. The city's skyline features buildings that can be seen from miles away, including the 461 m (1,512 ft) high skyscraper Landmark 81 and the Bitexco Financial Tower at a height of around 260 m (853 ft). As well as its economic importance, Ho Chi Minh City is also a culinary centre with a variety of Vietnamese and international restaurants. Chinatown, also known as Cho Lon, in the busy city centre is an inviting place to spend time browsing and admiring the curiosities on offer at the markets. The overnight lay time allows you to relax and unwind at the end of the day.

Day 20 Ho Chi Minh City/Vietnam

Please note:

* The shore activities are not included in the cruise price and are in the planning stage. Subject to change.

The Small Cruise Ship Collection

www.small-cruise-ships.com

01432 507 280 (within UK)

info@small-cruise-ships.com | small-cruise-ships.com

The Small Cruise Ship Collection

www.small-cruise-ships.com

small-cruise-ships.com

info@small-cruise-ships.com

YOUR SHIP: EUROPA

YOUR SHIP: Europa

VESSEL TYPE:

LENGTH:

PASSENGER CAPACITY:

BUILT/REFURBISHED:

Extensive space for a maximum of 400 guests A crew-to-guest ratio of almost one to one Outside suites only, most with a veranda Five restaurants for the ultimate in culinary indulgence - including THE GLOBE by three-star chef Kevin Fehling Top-class entertainment: experience international artists and experts live on board EUROPA Refresh: new fitness and wellness concepts for even more well-being MS EUROPA is an award-winning luxury cruise ship renowned for setting global standards in refined small-ship cruising. Accommodating a maximum of just 400 guests, the ship offers an intimate and highly personalised experience, supported by an almost one-to-one crew-to-guest ratio. Designed around the concept of casual luxury, EUROPA combines spacious surroundings, attentive service, and elegant all-suite accommodation, with all suites featuring ocean views and most offering private verandas. Onboard, guests can enjoy five exceptional restaurants, including fine dining concepts created in collaboration with acclaimed chefs, alongside world-class entertainment, wellness facilities, and thoughtfully curated enrichment experiences. The ship's smaller size allows access to unique itineraries and exclusive ports beyond the reach of larger vessels, while recent EUROPA Refresh

enhancements have introduced updated fitness and wellness concepts for an even more elevated onboard experience. Blending sophistication, comfort, and flexibility, MS EUROPA delivers a truly premium voyage to destinations



worldwide.

The Small Cruise Ship Collection

www.small-cruise-ships.com

01432 507 280 (within UK)

info@small-cruise-ships.com | small-cruise-ships.com

The Small Cruise Ship Collection

www.small-cruise-ships.com

small-cruise-ships.com

info@small-cruise-ships.com

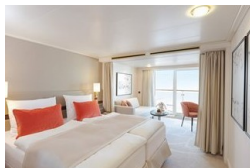
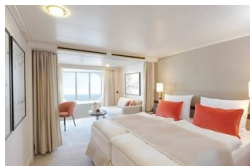
INSIDE YOUR SHIP

Penthouse Deluxe Suite



SPA Suite

Suite with panorama window



Veranda Suite Cat. 4-5

The Small Cruise Ship Collection

www.small-cruise-ships.com

01432 507 280 (within UK)

info@small-cruise-ships.com | small-cruise-ships.com



The Small Cruise
Ship Collection

www.small-cruise-ships.com

small-cruise-ships.com

info@small-cruise-ships.com

PRICING

20-Mar-2028 to 08-Apr-2028

Suite with panorama window	£9065 GBP pp
Veranda Suite Cat. 4-5	£11589 GBP pp
Veranda Suite Cat. 6-7	£15045 GBP pp
SPA Suite	£16245 GBP pp
Penthouse Deluxe Suite	£25875 GBP pp