

The Small Cruise Ship Collection

www.small-cruise-ships.com

small-cruise-ships.com

info@small-cruise-ships.com

ISLE OF BEAUTY & ITALIAN SHORES - MEDITERRANEAN LUXURY CRUISE

This cruise, will cultivate the art of peaceful travel as well as a family spirit, thanks to its customised activities on board and on shore for youngsters, with the Kid Explorers Club. From the pearl of the French Riviera, set sail on a 9-day cruise in the Mediterranean. Aboard *_Le Boréal_*, discover the Isle of Beauty and the captivating shores of northwest Italy during an unforgettable trip. Throughout your journey, you will benefit from an excursion included per person per port of call, to choose from a selection offered by PONANT. During this cruise, dive into the teeming waters of the wild Revellata peninsula at the gates of Calvi, discover the Villa Dei Mulini, Napoleon's former winter residence in Portoferraio, or set off to discover the captivating nature of Portofino. The diversity of experiences on offer promises you intense and varied moments (to discover the full range of excursions, go to the itinerary tab). From Nice, you will set a course towards the northern coastlines of Corsica to reach Saint-Florent. At the foot of the mountains of Cap Corse and the Agriates desert, the beauty of the landscapes gives this ancient Genoese city a picture-postcard appearance. Further south, Propriano amazes with its rich history and surprises with its incredible beauty. Here, the coastline edging the scrubland, with its distinctly Mediterranean scents, alternates between long sandy beaches and breathtaking coves. *_Le Boréal_* will then stop at Porto Ercole, a charming village with colourful houses, on the Monte Argentario peninsula. Here, you will have the possibility of meeting fishermen from the Orbetello Lagoon as well as local producers. The peninsula's rolling and lush landscapes will also provide you with opportunities for magnificent hikes. Opposite the peninsula, the island of Giglio

stands before you. On this mountainous land covered by garrigue on which pine forests and vineyards grow, fine sandy beaches and hidden coves compose a landscape in which the emerald sea serves as a setting for wild nature. After a port of call at Portoferraio, a small corner of paradise on the island of Elba, where Napoleon spent many days in exile, stop in Portofino. Built in a natural harbour protected by a pine forest, it is a picturesque and lively port that has successfully retained its authenticity and traditions. Your ship will make its way to Calvi, in the heart of the Balagne region. Between jagged peaks and sublime beaches with turquoise waters, you will enjoy the experience of wild and authentic Corsica. Your cruise will end in Nice, famous for its never-ending riviera. ___for children aged 4 to 13



The Small Cruise Ship Collection
www.small-cruise-ships.com

01432 507 280 (within UK)

info@small-cruise-ships.com | small-cruise-ships.com



The Small Cruise Ship Collection

www.small-cruise-ships.com

small-cruise-ships.com

info@small-cruise-ships.com

years old_

Day 3 - Propriano

ITINERARY

Day 1 - Nice

Capital of the Cote d'Azur, Nice is surrounded by an amphitheatre of hills and mountains that protects it from the wind. You will probably want to explore the Promenade des Anglais, where you can sit on one of the famous blue chairs laid out opposite the baie des Anges. The Chateau hill is also a very pleasant place to walk. This is the entrance to the old city, with its bustling markets and regional products along the main street, the Cours Saleya.

In southern Corsica, the small port of Propriano amazes with its rich history and surprises with its incredible beauty. Here, the coastline edging the scrubland, with its distinctly Mediterranean scents, alternates between long sandy beaches and breathtaking coves. At the heart of this wild environment, the coastal town exudes its unique atmosphere. Established in the late 2nd century B.C., the town developed thanks to Etruscan, Greek, and later Carthaginian traders. From the port, the panorama of the Gulf of Valinco is mesmerizing, as the sea spray mingles with the beautiful southern light.

Day 2 - Saint-Florent, Corsica

Nestled on a rocky spur in the north-west of Corsica, the port of Calvi offers its whiteness between two sapphire-coloured bays. Capital of the Balagne region, the Genoese city benefits from an exceptional natural setting between the abrupt relief of the central chain, fertile hills and long sandy beaches. From the promontory of the Notre-Dame-de-la-Serra chapel, built in the 19th century on the ruins of a 15th century sanctuary, you will not miss the sublime panorama of the seaside, the mountains and the Calvi citadel. A little further west, you will have the opportunity to discover with the peninsula of Revelatta, a wilder and more preserved part of Corsica.

Day 4 - Porto Ercole

With its landscapes of undulating hills covered in lush meadows, narrow streets with colourful houses, and picturesque paths shaded by pines... Porto Ercole is a concentration of all of Tuscany's beauty. And what would it be without a fascinating, mystery-filled history? Overlooked by its 16th century fortress, this small village is renowned for having witnessed the final days of the famous painter Caravaggio, said to be buried there. On the Monte Argentario peninsula, you might have the chance to meet the fishermen of the Orbetello Lagoon, classed as a natural reserve, who perpetuate traditional fishing methods, or meet local wine, olive oil and cheese producers. For our sportier guests, the surrounding wild and pristine nature will provide the opportunity for a hike along the island's heights to enjoy breathtaking views.



Day 5 - Giglio

On the shores of the Tyrrhenian Sea, the small island of Giglio is home to a concentration of all of Tuscany's secrets and beauty. Fine sandy beaches and hidden coves compose a landscape in which the emerald sea serves as a setting for wild nature. This mountainous land is covered by garrigue on which pine forest and vineyards grow, a real paradise in the Mediterranean. A walk through the heart of this bucolic environment will also be the opportunity to discover rich history, as reflected in the medieval village of Giglio Castello.

Day 6 - Portoferraio, Elba

In the elbow of a creek on the northern coastline of Elba Island, a small corner of paradise awaits in the form of Portoferraio. As you approach its coastlines, you will make out the powerful and majestic contours of its Medici fortresses. Napoleon Bonaparte spent many of his 300 days in exile here. The Palazzina dei Mulini, his first imperial residence, whose gardens offer outstanding views of the sea, is a must-see. Historical treasures are followed by another kind of treasure, namely white sand beaches, and equally tempting local specialities including gurguglione and rice with cuttlefish ink.

Day 7 - Portofino

Close to the Cinque Terre, Portofino is the jewel of the Ligurian Riviera. This "small village that stretches like a half moon around a silent basin", described by Guy de Maupassant, is today a pretty, lively little port that has managed to preserve the authenticity of its maritime traditions, which have been recognised since Ancient times. Built in the hollow of a small natural cove sheltered by the pine forest, the village is at the heart of a protected maritime reserve. The shimmering colours of its house fronts and the exceptional location of this village have inspired many authors and artists. You will also see the Portofino lighthouse, immaculate in its green setting. Perched on the Punta del Capo, it watches over the peninsula and its postcard setting.

Day 8 - Calvi, Corsica

In the hollow of one of the most beautiful gulfs of the Mediterranean to which it owes its name, Saint-Florent is an ancient Genoese city whose citadel dominates the bay with its circular architecture. A link between the mountains of Upper Corsica and the Agriates desert, the fishing village has become a renowned seaside resort. In front of this jewel nestled in the hollow of a wild and isolated region, sublime beaches of fine sand border a sea of infinite turquoise shades. At the western



tip of the gulf, the Tower of Mortella, built in the 16th century under the Republic of Genoa to prevent from invaders, stands watch. Like most of the towers that dot the Corsican coast, it is an emblematic and familiar symbol of the island.

Day 9 - Nice

Capital of the Cote d'Azur, Nice is surrounded by an amphitheatre of hills and mountains that protects it from the wind. You will probably want to explore the Promenade des Anglais, where you can sit on one of the famous blue chairs laid out opposite the baie des Anges. The Chateau hill is also a very pleasant place to walk. This is the entrance to the old city, with its bustling markets and regional products along the main street, the Cours Saleya.

Please note

Itineraries are subject to change.



The Small Cruise Ship Collection

www.small-cruise-ships.com

small-cruise-ships.com

info@small-cruise-ships.com

YOUR SHIP: LE BOREAL

YOUR SHIP:

Le Boreal

VESSEL TYPE:

**142 metres. Passenger Capacity:
264 (in twin cabins, just 200 in
Antarctica). Built: 2011**

LENGTH:

PASSENGER CAPACITY:

BUILT/REFURBISHED:

Luxury Expedition / Cruise Ship A superb mega-yacht with 132 cabins, she is the fruit of the expertise of the Italian Fincantieri shipyard and French sophistication, as interpreted by designer Jean-Philippe Nuel. Le Boreal creates a unique atmosphere, a subtle blend of luxury, intimacy and well-being. The best materials, discreet elegance and a tasteful decor combined with exterior and interior lines to reflect a nautical mood. On board, soothing neutral tones are enlivened by splashes of red, our signature theme linking tradition and innovation to create personal touches in the spirit of a "private yacht". Cuisine Loyal to the great French tradition, the haute cuisine on board is worthy of the finest restaurants, where discreet, attentive service is the hallmark. Choose from two restaurants for breakfast, lunch and dinner. The Gastronomic Restaurant is situated on Le Liberte Deck and serves you French and international cuisine accompanied by fine wine. In the Grill Restaurant, you have the opportunity to eat outside and enjoy buffet lunch and themed dinner. Life On Board Whether you want to join other guests in the theatre or games area (Wii™ consoles, etc), or relax on your

own in a quiet corner of the library, Le Boreal has been designed to meet the needs of every guest. Everything has been done to preserve the independence of each guest to suit their personal tastes: lounges for lectures and shows, a spa in partnership with Carita™, but also more intimate spaces such as the library and internet corner. Comfortable cabins, nearly all with private balcony, are available for families either as triples or as communicating cabins. There is also a games area with Wii™ consoles, children's menus, and a baby-sitting service. Just as if you were on a private yacht, your time is your own to do as you please. Fitted with the latest equipment (Kinesis Wall, running machine) and in partnership with the famous Carita™ brand, the Beauty Centre on Le Boreal welcomes you for some relaxation and pampering (beauty treatments, hairdresser, hammam, balneotherapy). Wheelchairs 3 specially adapted wheelchair cabins (Deck 3 = Superior cabin no. 307, no balcony, Deck 4 = Prestige Cabin no. 407 - with balcony and Deck 5 = Prestige Cabin no 509, with balcony) and lifts to all decks/areas. Please click the following links to read more about Ponant and the other Ponant

The Small Cruise
Ship Collection
www.small-cruise-ships.com

01432 507 280 (within UK)

info@small-cruise-ships.com | small-cruise-ships.com



The Small Cruise Ship Collection

www.small-cruise-ships.com



small-cruise-ships.com

info@small-cruise-ships.com



cruise ships.



The Small Cruise
Ship Collection

www.small-cruise-ships.com

01432 507 280 (within UK)

info@small-cruise-ships.com | small-cruise-ships.com

The Small Cruise Ship Collection

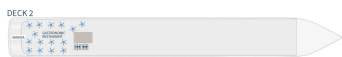
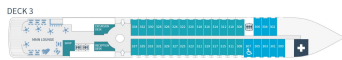
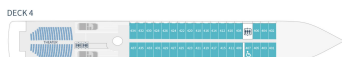
www.small-cruise-ships.com

small-cruise-ships.com

info@small-cruise-ships.com

INSIDE YOUR SHIP

Deck plans - Le Boréal, L'Austral, Le Soléal & Le Lyrial



DECK 7

Open air bar - Sun deck

DECK 6

Le Boréal, L'Austral, Le Soléal: Owner's Suite - 3 Deluxe Suites with private balcony - 20 Prestige staterooms with private balcony (with 18 Prestige staterooms convertible into 9 Prestige suites)
Le Lyrial: Owner's Suite - 1 Grand Privilege Suite - 3 Deluxe Suites with private balcony - 3 Grand Deluxe Suite - 8 Privilege Suites - 1 Prestige stateroom - Pool - Grill Restaurant - Internet space - Library - Panoramic Lounge - Panoramic terrace

DECK 5

27 Prestige staterooms with private balcony (with 22 Prestige staterooms convertible into 11 Prestige suites) - Fitness - PONANT yacht spa (hot tubs, hammam, massage, treatment) - Relaxation room - Image & photo desk - Bridge

DECK 4

26 Prestige Staterooms with private balcony - Theater

DECK 3

28 Deluxe Staterooms with private balcony - 8 Superior Staterooms - Main lounge - Shop - Reception Desk - Excursion Desk - Medical center

DECK 2

Gastronomic Restaurant - Marina

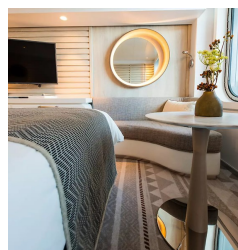
Owner's Suite
Deck 6
Privilege Suites
Deck 6 - Le Lyrial
Grand Privilege Suite
Deck 6 - Le Lyrial

Prestige Suites
Port 6 - 5 except Le Lyrial
Grand Deluxe Suites
Deck 6 - Le Lyrial
Deluxe Suites
Deck 6

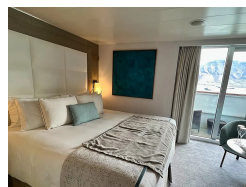
Prestige Staterooms
Decks 4 - 5 - 6
Deluxe Staterooms
Deck 3
Superior Staterooms
Deck 3

PONANT

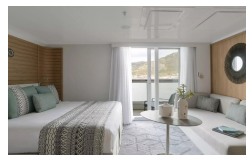
Deluxe Stateroom



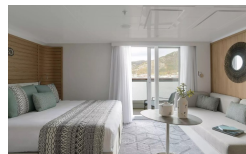
Deluxe Suite



Deluxe Suite Deck 3



Deluxe Suite Deck 4



Deluxe Suite Deck 5

Grand Deluxe Suite Deck 5

Prestige Deck 4

Prestige Deck 5 Suite

Prestige Deck 6 Suite

Privilege Suite Deck 6

Deluxe Suite Deck 6

Grand Deluxe Suite Deck 6

Prestige Deck 5

Prestige Deck 6

Privilege Suite Deck 5

Superior Stateroom

The Small Cruise Ship Collection
www.small-cruise-ships.com

01432 507 280 (within UK)

info@small-cruise-ships.com | small-cruise-ships.com

The Small Cruise Ship Collection

www.small-cruise-ships.com

small-cruise-ships.com

info@small-cruise-ships.com

PRICING

02-Jul-2026 to 10-Jul-2026

Prestige Deck 5 Suite	£10785 GBP pp
Deluxe Suite Deck 6	£9705 GBP pp
Prestige Deck 4	£5409 GBP pp
Deluxe Suite Deck 3	£9705 GBP pp
Deluxe Stateroom	£5135 GBP pp
Deluxe Suite Deck 4	£9705 GBP pp
Deluxe Suite Deck 5	£9705 GBP pp
Grand Deluxe Suite Deck 6	£14015 GBP pp
Prestige Deck 6	£5995 GBP pp
Privilege Suite Deck 6	£11595 GBP pp
Prestige Deck 5	£5669 GBP pp
Privilege Suite Deck 5	£11595 GBP pp
Grand Deluxe Suite Deck 5	£14015 GBP pp
Prestige Deck 6 Suite	£11055 GBP pp

26-Jul-2026 to 03-Aug-2026

Grand Deluxe Suite Deck 5	£12195 GBP pp
Deluxe Suite Deck 3	£8455 GBP pp
Deluxe Stateroom	£4479 GBP pp
Prestige Deck 4	£4715 GBP pp
Prestige Deck 5	£4949 GBP pp
Prestige Deck 6 Suite	£9625 GBP pp
Privilege Suite Deck 6	£10095 GBP pp
Privilege Suite Deck 5	£10095 GBP pp
Grand Deluxe Suite Deck 6	£12195 GBP pp
Prestige Deck 6	£5229 GBP pp
Prestige Deck 5 Suite	£9395 GBP pp
Deluxe Suite Deck 5	£8455 GBP pp
Deluxe Suite Deck 6	£8455 GBP pp
Deluxe Suite Deck 4	£8455 GBP pp

14-Aug-2026 to 22-Aug-2026

Prestige Deck 5 Suite	£9005 GBP pp
Superior Stateroom	£4075 GBP pp
Prestige Deck 5	£4749 GBP pp
Prestige Deck 4	£4525 GBP pp
Deluxe Stateroom	£4295 GBP pp
Prestige Deck 6 Suite	£9235 GBP pp
Prestige Deck 6	£5015 GBP pp
Deluxe Suite	£8109 GBP pp