

## The Small Cruise Ship Collection

www.small-cruise-ships.com

small-cruise-ships.com

info@small-cruise-ships.com

## ISLANDS, CITIES AND VOLCANOES OF INDONESIA - LUXURY SMALL SHIP CRUISE

Fall under the spell of tropical Asia, where Indonesia unfolds its stunning landscapes and its cultural mosaic. From the shores of western Malaysia to the lush forests of Sumatra, where turquoise lagoons and beaches edged with coconut trees rub shoulders, the archipelago reveals all its intact beauty, blending villages with secular customs and captivating landscapes shaped by the sea and by fire. On the islands of Nias and Mentawai, the ancestral communities live in tune with nature, and their dances and songs rise like echoes of ancient times. The Krakatoa are reminder of the power of volcanoes and the riches of tropical forests. From Semarang, a town with multiple influences, there is access to Borobudur, a Buddhist masterpiece and UNESCO World Heritage Site showing unique spiritual testimony. Java appears with the sacred silhouette of Mount Bromo, while Bali enchants and captivates.



### ITINERARY

#### Day 1 - Singapore

Nicknamed the Garden City, Singapore stretches across Malaysia's southern-most region. Experience the vibrant hustle and bustle of this city-state for yourself at the **Marina Bay**. No too far away is the historic centre, offering up a unique smorgasbord of neoclassical buildings and contemporary towers. Decked out in topiary, the pavements of Orchard Road are also home to countless shopping centres. The colourful markets in **Chinatown** and **Little India** are the perfect opportunity to quell hunger pangs in a hawker centre, one of the city's traditional snack bars. Between the two districts, get a slice of history with a trip to the **Raffles dock**. It was here

The Small Cruise Ship Collection

www.small-cruise-ships.com

01432 507 280 (within UK)

info@small-cruise-ships.com | small-cruise-ships.com



## The Small Cruise Ship Collection

[www.small-cruise-ships.com](http://www.small-cruise-ships.com)

[small-cruise-ships.com](http://small-cruise-ships.com)

[info@small-cruise-ships.com](mailto:info@small-cruise-ships.com)

that Englishman **Sir Raffles**, the founder of the city, is said to have arrived one fateful day in January 1819.

### Day 2 - Malacca

Lying along the shores of the eponymous Strait, **Malacca City** has been listed as a **UNESCO** World Heritage Site. A witness of the maritime traffic between Asia and the West, the city is inextricably linked to the **trade of spices and silk**. This cultural oasis will show you the history of a fascinating ancient civilisation, the **Baba Nyonya**, the descendants of Chinese immigrants who married Malay women. In a Peranakan house in Chinatown, you will discover the Baba Nyonya Heritage Museum, which reproduces the interior of a traditional elegant home from the 19th century. The Baba Nyonya were wealthy traders who liked to indulge their taste for **sumptuous furniture made from teak and mother-of-pearl**, rare jewels and silk brocade.

### Day 3 - At sea

During your journey at sea, make the most of the many services and activities on board. Treat yourself to a moment of relaxation in the spa or stay in shape in the fitness centre. Depending on the season, let yourself be tempted by the swimming pool or a spot of sunbathing. This journey without a port of call will also be an opportunity to enjoy the conferences or shows proposed on board, depending on the activities offered, or to do some shopping in the boutique or to meet the PONANT photographers in their dedicated space. As for lovers of the open sea, they will be able to visit the ship's upper deck to admire the spectacle of the waves and perhaps be lucky enough to observe marine species. A truly enchanted interlude, combining comfort, rest and entertainment.

### Day 4 - Banda Aceh, Sumatra

Banda Aceh is the capital and largest city in the province of Aceh, Indonesia, located on the north-western tip of Sumatra. On 26 December 2004, the city was hit by a tsunami caused by a 9.2 magnitude earthquake in the Indian Ocean. The disaster killed 167,000 inhabitants, injured countless others and destroyed more than 60% of the city's buildings. With the assistance of domestic and international aid an enormous effort has been made to rebuild since that fateful day. Join your expedition team and local guides for a bus tour visiting the Tsunami Museum, memorial and educational centre along with other historical and cultural landmarks including the Baiturrahman Mosque, one of the city's dominant landmarks.

### Day 5 - Banyak Islands

With their palm trees, beaches of fine, immaculate white sand, and crystal-clear sea, the tropical Banyak Islands are the stuff of dreams. **This archipelago of 99 islands** -- most of them uninhabited -- is especially popular with surfers and is attracting a growing number of travellers seeking an earthly paradise. The Banyak Islands are also home to **Sumatra's top snorkelling spots**, featuring stunning **underwater forests of colourful coral**.

### Day 6 - Pulau Nias, Greater Sunda Islands

The geographic isolation of the Nias islands have resulted in a unique megalithic culture. One of the most unique cultural traditions still in practice is Stone Jumping, a manhood ritual that sees young men leaping over two-meter stone towers in a rite of passage. The higher they jump; the better chance they have of acquiring a wife. The tradition was originally designed to train the young men for warfare and defence. In addition, the traditional music of Nias, performed mostly by women, is noted

The Small Cruise Ship Collection  
[www.small-cruise-ships.com](http://www.small-cruise-ships.com)

01432 507 280 (within UK)

[info@small-cruise-ships.com](mailto:info@small-cruise-ships.com) | [small-cruise-ships.com](http://small-cruise-ships.com)



## The Small Cruise Ship Collection

[www.small-cruise-ships.com](http://www.small-cruise-ships.com)

[small-cruise-ships.com](http://small-cruise-ships.com)

[info@small-cruise-ships.com](mailto:info@small-cruise-ships.com)

worldwide for its haunting beauty. Today you will have the opportunity to visit a traditional village and witness unique cultural performances that serve as the primary form of spiritual expression.

### Day 7 - Mentawai Islands, Sumatra

With their long sandy beaches lined with coconut trees, their old-growth forest home to several endemic species of primates, and their hunter-gatherer tribes living in harmony with nature, the Mentawai Islands are one of Indonesia's most authentic destinations. And despite seeing an influx of wave riders for some time now due to the heavenly surfing conditions, this archipelago remains one of Indonesia's most unspoiled.

### Day 8 - Enggano Island

Enggano Island thrives in the heart of the Indonesian archipelago, **between steep cliffs and beaches of golden sand, where turquoise lagoons and coconut palms create an idyllic setting.** **The villages, guardians of age-old customs**, live according to traditions in this place where sea and fire have sculpted landscapes of pristine beauty. Trails wind across these fabled lands, and small coves offer clear waters ideal for observing this unique natural environment. In the distance, **shorelines and lush forests take shape**, as boats glide between **inlets and mangroves**, their hulls skimming the waters of the Indian Ocean.

### Day 9 - Sailing along Krakatoa

Krakatoa, or Krakatau, is a name familiar to most, though few know where it is located. Lying in the Sunda Strait, between Java and Sumatra on the Pacific ring of fire, is the site of the largest volcanic eruption in modern history. The 1883 eruptions culminated with a colossal blast that literally blew Krakatau

apart. The noise was heard over 4,600 km away. Eruptions since 1927 have built a new cone known as Anak Krakatau ("The child of Krakatau") that is still active, with its most recent eruptive episode having begun in 1994. Quiet periods of a few days alternate with spectacular Strombolian eruptions. Guest activities will be determined by the level of volcanic activity on the day and may involve ship based viewing or zodiac tour.

### Day 10 - At sea

During your journey at sea, make the most of the many services and activities on board. Treat yourself to a moment of relaxation in the spa or stay in shape in the fitness centre. Depending on the season, let yourself be tempted by the swimming pool or a spot of sunbathing. This journey without a port of call will also be an opportunity to enjoy the conferences or shows proposed on board, depending on the activities offered, or to do some shopping in the boutique or to meet the PONANT photographers in their dedicated space. As for lovers of the open sea, they will be able to visit the ship's upper deck to admire the spectacle of the waves and perhaps be lucky enough to observe marine species. A truly enchanted interlude, combining comfort, rest and entertainment.

### Day 11 - Semarang

**Semarang** enjoys a strategic location on the northern coast of **Java**, making it a cosmopolitan port town and a melting pot of Chinese, Indo-Arabic and European cultures. Before setting off to explore the region's treasures, take a tour of the old town and its smattering of old colonial buildings. Here in Indonesia's most Chinese town, don't miss a trip to the **Chinatown** district. If it's culture you're after, journey deeper into the green, rolling inland region, passing by volcanoes and rice paddies until you reach the royal town of

The Small Cruise Ship Collection

[www.small-cruise-ships.com](http://www.small-cruise-ships.com)

01432 507 280 (within UK)

[info@small-cruise-ships.com](mailto:info@small-cruise-ships.com) | [small-cruise-ships.com](http://small-cruise-ships.com)



## The Small Cruise Ship Collection

[www.small-cruise-ships.com](http://www.small-cruise-ships.com)

[small-cruise-ships.com](http://small-cruise-ships.com)

[info@small-cruise-ships.com](mailto:info@small-cruise-ships.com)

**\*\*Yogyakarta\*\*** and one of its ancient kingdoms, the **\*\*Borobudur\*\*** : this Buddhist temple is a **\*\*UNESCO World Heritage Site\*\*** and one of the world's largest temples.

### Day 12 - Bawean

Anchored in the heart of the Java Sea, **\*\*halfway between the Indonesian islands of Java and Borneo\*\*** , Bawean invites serenity. Known for its white sandy beaches and crystal-clear waters, the island is surrounded **\*\*by coral reefs and sandbanks\*\*** , offering an ideal setting for a moment of relaxation by the ocean.

### Day 13 - Probolinggo, Java

Nestled inside the massive Tengger caldera surrounded by a sea of sand, Mount Bromo is the epitome of desolate beauty. The volcanic complex dates back to about 820,000 years ago and consists of five overlapping stratovolcanoes, each truncated by a caldera. Lava domes, pyroclastic cones, and a maar occupy the flanks of the massif. The surreal lunar landscape has spawned countless legends and myths. Mt Bromo has particular significance for the Hindu Tengger people who believe that this was the site where a brave prince sacrificed his life for his family. After an early departure from the ship guest will travel by bus to Mount Bromo to enjoy this surreal site.

### Day 14 - At sea

During your journey at sea, make the most of the many services and activities on board. Treat yourself to a moment of relaxation in the spa or stay in shape in the fitness centre. Depending on the season, let yourself be tempted by the swimming pool or a spot of sunbathing. This journey without a port of call will also be an opportunity to enjoy the conferences or shows proposed on board, depending on the activities offered, or to do some

shopping in the boutique or to meet the PONANT photographers in their dedicated space. As for lovers of the open sea, they will be able to visit the ship's upper deck to admire the spectacle of the waves and perhaps be lucky enough to observe marine species. A truly enchanted interlude, combining comfort, rest and entertainment.

### Day 15 - Bena, Bali

If it's a taste of exotic authenticity you're after, prepare to be spell-bound by the **\*\*island of Bali\*\*** , tucked away in the heart of the Indonesian **\*\*archipelago\*\***. The beauty and diversity of its landscapes, the depth and richness of its cultural heritage and the plethora of activities on offer here make **\*\*Bali\*\*** a little slice of heaven on Earth. The island's southern coast enthralls with its white sand beaches, its picturesque little fishing villages such as **\*\*Bena,\*\*** and its hills patchworked with terraced rice paddies further inland. Nicknamed 'the Island of Gods' for its sumptuous temples, Bali is the beating heart of Indonesian Hinduism.

### Please note:

Itineraries are subject to change.

The Small Cruise Ship Collection

[www.small-cruise-ships.com](http://www.small-cruise-ships.com)

01432 507 280 (within UK)

[info@small-cruise-ships.com](mailto:info@small-cruise-ships.com) | [small-cruise-ships.com](http://small-cruise-ships.com)

## The Small Cruise Ship Collection

[www.small-cruise-ships.com](http://www.small-cruise-ships.com)

[small-cruise-ships.com](http://small-cruise-ships.com)

[info@small-cruise-ships.com](mailto:info@small-cruise-ships.com)

### YOUR SHIP: LE SOLEAL

**YOUR SHIP:** Le Soleal

**VESSEL TYPE:**

**LENGTH:**

**PASSENGER CAPACITY:**

**BUILT/REFURBISHED:**

Luxury Small Ship A sleek silhouette, a welcoming intimate atmosphere, and the same philosophy that has made her sister ships, L'Austral, Lyrial and Le Boreal, such a success. This magnificent yacht of only 132 staterooms and suites, all with balconies, has contemporary decor inspired by the luxury yachting world, with fluid lines and a modern colour scheme combining natural wood with shades of grey and white. White Corian counters in the lobby contrast with the warmth of leather to recall a boat's hull, while the central sculpture of enamelled pieces takes its inspiration from the sea. In the lounge bar, the carpet picks up a tennis stripe theme symbolising a certain idea of cruising, one synonymous with French elegance and a chic seaside spirit. Wheelchairs 3 specially adapted wheelchair cabins (Deck 3 = Superior cabin no. 307, no balcony, Deck 4 = Prestige Cabin no. 407 - with balcony and Deck 5 = Prestige Cabin no 509, with balcony) and lifts to all decks/areas. Read about our recent Ponant cruise to Antarctica Please click the following links to read more about Ponant and the other Ponant cruise ships.



The Small Cruise Ship Collection

[www.small-cruise-ships.com](http://www.small-cruise-ships.com)

01432 507 280 (within UK)

[info@small-cruise-ships.com](mailto:info@small-cruise-ships.com) | [small-cruise-ships.com](http://small-cruise-ships.com)

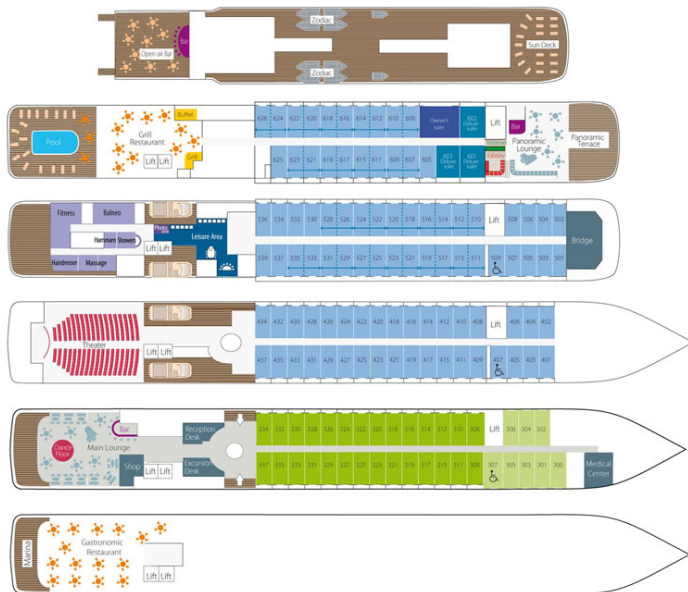
# The Small Cruise Ship Collection

www.small-cruise-ships.com

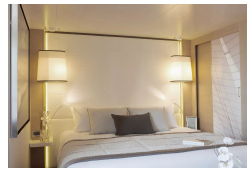
small-cruise-ships.com

info@small-cruise-ships.com

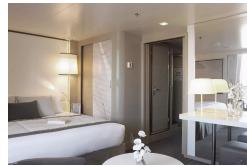
## INSIDE YOUR SHIP



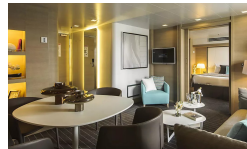
Deluxe Stateroom



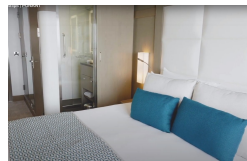
Deluxe Suite



Owner's Suite



Prestige Stateroom Deck 4



Prestige Stateroom Deck 5

Prestige Stateroom Deck 6

Prestige Suite Deck 5

Prestige Suite Deck 6

The Small Cruise Ship Collection

www.small-cruise-ships.com

01432 507 280 (within UK)

info@small-cruise-ships.com | small-cruise-ships.com



# The Small Cruise Ship Collection

[www.small-cruise-ships.com](http://www.small-cruise-ships.com)

[small-cruise-ships.com](http://small-cruise-ships.com)

[info@small-cruise-ships.com](mailto:info@small-cruise-ships.com)

## PRICING

01-Jun-2027 to 15-Jun-2027

Superior Stateroom	£6075 GBP pp
Prestige Suite Deck 6	£15965 GBP pp
Deluxe Stateroom	£6575 GBP pp
Prestige Stateroom Deck 5	£7655 GBP pp
Prestige Stateroom Deck 4	£7295 GBP pp
Deluxe Suite	£11235 GBP pp
Owner's Suite	£25975 GBP pp
Prestige Suite Deck 5	£15185 GBP pp
Prestige Stateroom Deck 6	£8085 GBP pp



The Small Cruise Ship Collection

[www.small-cruise-ships.com](http://www.small-cruise-ships.com)

01432 507 280 (within UK)

[info@small-cruise-ships.com](mailto:info@small-cruise-ships.com) | [small-cruise-ships.com](http://small-cruise-ships.com)