

The Small Cruise Ship Collection

www.small-cruise-ships.com

small-cruise-ships.com

info@small-cruise-ships.com

ISLAND TRAILS OF THE PHILIPPINES

Depart from Keelung to discover the small islands of the Philippines shaped by Spanish colonial heritage and World War II history. Share in traditional practices, witness ancient customs and be immersed in the natural environment of these secluded islands. On Taiwan's east coast, wander the elevated boardwalks, suspension bridges and hiking trails that wind through Taroko Gorge National Park. Encounter Japanese trading heritage at Luzon and visit the historic Cabo Engano lighthouse on Palau Island. Beachcomb on the Philippines' famously idyllic beaches snorkel and dive on the vibrant Catanduanes and Cuatro Islas. As we approach Manila, browse handicraft stores and visit the heritage churches, houses and shrines of Marinduque, home of the kalutang instrument, which is cited as one of the intangible cultural heritages of the Philippines.



ITINERARY

DAY 1: KEELUNG

Board Coral Adventurer at 4:00 pm at Keelung, Taiwan. Settle into your stateroom and relax as we set sail across the Pacific Ocean. Join the Captain's welcome drinks and meet your crew and fellow guests as the sun sets.

HUALIEN, TAIWAN

This morning we arrive at Hualien City on the east coast of Taiwan. The central Pine Garden is a cultural centre set inside a former Japanese military office. The Hualien County Stone Sculpture Museum displays contemporary and traditional stone carvings. Tzu Chi Cultural Park is a tranquil green space, with statues and a meditation hall. On the Pacific Ocean coast, sprawling Nanbin Park features a popular night market. Explore

The Small Cruise Ship Collection
www.small-cruise-ships.com

01432 507 280 (within UK)

info@small-cruise-ships.com | small-cruise-ships.com



The Small Cruise Ship Collection

www.small-cruise-ships.com

small-cruise-ships.com

info@small-cruise-ships.com

the myriad of walking trails and suspension bridges that wind through towering marble valleys and past thundering waterfalls of Taroko Gorge National Park. Carved by the Liwu River, the spectacular Gorge is the largest marble canyon in the world and boasts a wide variety of trails, temples and landscapes.

CLAVERIA, LUZON

Located on the north coast of Luzon and directly south of Taiwan, Claveria is known as 'Paradise of the North'. On our visit here, cross the hanging bridge at Baranggay Nagsabaran and taste local food. Explore the rich biodiversity of the land, experience local catch fishing and learn about how different species of fish are hatched at the Bureau of Fishery and Aquatic Resources. See one of the heritage houses, the grotto of the Lady of Lourdes and a 948 church bell at the Sta Maria Eco Park.

CALAYAN ISLAND

One of five major islands belonging to the Babuyan Group located along the Luzon Strait, Calayan Island boasts pristine white sand beaches and great hiking terrains. Beach comb at Sibang Cove and hike to Nagudungan Hills for an spectacular view of the town, hills and cliffs.

PALAU ISLAND

Experience the natural beauty of Palau Island National Park where wildlife encounters, both on land and in the sea are main

attractions along with historic Cabo Engano lighthouse. The decommissioned 19th century Faro de Cabo Engano lighthouse on Palaui Island was built during the Spanish colonial period and is considered a National Cultural Treasure. Explore the Punta Verde falls and trek to faro de Cabo Engano at Cape Engano to be rewarded with a breathtaking view.

POLILLO ISLAND

A relaxed tropical island, Polillo is the largest of 27 islands that make up the archipelago. With white sand beaches and clear waters, we will spend time snorkelling, swimming and kayaking around the small islets. Beachcomb and admire the rock formation resembling two chickens. Bird watching is available at close by Minasawa Island and Putting Bato has hidden caves to discover.

CATANDUANES ISLANDS

Enjoy water activities and leisurely beach walks at some of the Philippines famously scenic beaches with their palm-fringed white sand, aquamarine sea and coral reefs populated by vibrant coral and tropical fish. Enjoy having the island to yourself. At the UNESCO Geopark Reserve of Catanduanes Island explore its unique landscape with lagoons, caves and waterfalls and learn about the melding of Philippines and Spanish culture and history at the Museo de Catanduanes.

BIRI & CAPUL ISLANDS



The Small Cruise Ship Collection

www.small-cruise-ships.com

small-cruise-ships.com

info@small-cruise-ships.com

Biri Island, a marine protected reserve with opportunities to explore the underwater marine wonderland, we also learn about Biri Island's place in WWII history on our visit here. Visit the Magasang Rock formations for its view and take a dip in the water in the middle of these rocks. Those who choose to dive here have the opportunity to join the volunteer program by NGO Biri Initiative to help remove sea pests feeding on coral. Capul Island's church, Saint Ignatius of Loyola Parish Church, is a National Cultural Treasure as designated by the National Museum of the Philippines. Equally well known is the Capul Lighthouse which has been safely guiding mariners through the San Bernadino Strait since the 1890's. Visit these historic landmarks and take a walking tour leading to a natural spring once used by Spanish galleons to fetch water prior to their departure to Mexico.

MARIPIPI

Known as the 'Isle of Gems' for its clear waters, friendly locals and dazzlingly bright white sand beach, Maripipi along with Sambawan and Carnaza Island offer opportunities for snorkelling, diving, kayaking as well as bird watching in the lush forests. Visit the township of Viga and experience cultural immersion such as tasting local delicacies, watching weaving of wild vines and participating in pottery making.

TACLOBAN, LEYTE

Learn more about Leyte's history at the MacArthur Landing Memorial National Park in Palo. The park honours General

Douglas MacArthur and his return to the Philippines to help defeat the Japanese forces on the 20th of October 1944. On your visit here you will see the bronze statues of the heroic general and his comrades on a shallow pool. View artworks from around the world at Santo Nino Shrine & Heritage Museum, visit the Anibong shipwreck memorial and stroll through local markets.

CUATRO ISLAS

Meaning 'four islands' in Spanish, Cuatros Islas is a group of elusive islands, three of which being inhabited and rarely visited by locals and tourists alike. They are an idyllic location for a full day of relaxing and water activities including snorkelling, diving, kayaking and cruising around the tropical paradise by Xplorer.

BOHOL

Board a riverboat for a leisurely cruise along the picturesque Loboc River while enjoying a buffet-style lunch of local delicacies accompanied by local musicians. Enjoy passing by waterfront villages and watching local children swinging from rope swings strung from coconut palms. Moor up against a floating platform where women and children dressed in traditional costumes perform a lively song and dance performance where you are welcome to join in. Visit the Tarsiers Conservatory to see the world's smallest primate which are little bigger than a mango and are considered a near-threatened species. From the viewpoint lookout admire the cacao-coloured Chocolate Hills with their symmetrical mounds.



The Small Cruise Ship Collection

www.small-cruise-ships.com

small-cruise-ships.com

info@small-cruise-ships.com

MACTAN

Learn of Mactan history and visit the Lapu Lapu Monument is a majestic 20m bronze statue of the hero armed with a kampilan (a native sword) and a shield, erected to honour the bravery of the Datu on the very ground the battle was believed to have taken place. The Magellan Monument, on the other hand, is a large obelisk dedicated to the Portuguese explorer who brought Christianity to the Philippines. Learn about the art of making guitars at Alegre Guitar Factory, known for ukuleles and the bandurria, a plucked chordophone similar to a mandolin and used in Spanish folk music. Enjoy an optional traditional Mactan meal for lunch at the Sut TuKil restaurant.

TICAO

Ticao Island is an ecological frontier for the conservation of Manta Rays and a rare subspecies of Visayan warty pig. Swim with Manta Rays and pass over wrecks of the world's biggest battleship - IJN Musashi. We may also stop in at Matangtibig Spring for a fresh-water dip. Admire the old-style homes of San Jacinto and Monreal and enjoy watching the sunset onboard with a view of Guinlatayan Rock.

MARINDUQUE

Go on a cultural tour by visiting heritage houses, churches and shrines. Browse traditional handicrafts stores and souvenir shops to learn more about the island province's local industries. Visit the Century-old Boac Cathedral and the Biglang Awa Shrine

as well as the Marl Insects and Butterfly Garden. The area is also home of the Kalutang, a musical instrument made of two pieces of wood cited by the National Commission for Culture and the Arts as one of the intangible cultural heritages of the Philippines.

DAY 17: MANILA

Our voyage ends in the Philippines capital of Manila. Disembark Coral Adventurer at 9:00am and bid farewell to new-found friends, the Master and crew.

Please note:

Itineraries are subject to change.



The Small Cruise Ship Collection

www.small-cruise-ships.com

small-cruise-ships.com

info@small-cruise-ships.com

YOUR SHIP: CORAL ADVENTURER

YOUR SHIP: Coral Adventurer

VESSEL TYPE:

LENGTH:

PASSENGER CAPACITY:

BUILT/REFURBISHED:

Launched in 2018 with her maiden voyage in 2019, Coral Adventurer has been designed and built to take you closer to unspoilt vistas in comfort, style and safety. A culmination of two years of design and three decades of passion for expedition cruising. BIGGER IS NOT BETTER At a time when cruise ships get larger and glitzier, we remain stubbornly compact and intimate. Our ships are designed to take you to unspoilt destinations not accessible to large ships. We want you to have the luxury of space, dine with whom you please, or find your quiet corner on deck. So Coral Adventurer has just 60 spacious cabins. This preserves the intimate atmosphere we are known for without sacrificing the stability and comfort of a true ocean going vessel. BUILT FOR DISCOVERY The Coral Adventurer features the trademark dual 'Xplorer' tenders cradled on a hydraulic platform slung off the back of the ship, enabling our guests to go ashore in comfort and ease. The shallow draft of the ship enables us to go closer to shore than larger ships. Together with a renowned expedition team, this new ship will offer the most advanced expedition capabilities of any small ship afloat. BUILT FOR COMFORT With active stabilisers dampening sea motion, mostly balcony cabins, and interiors designed with the colours and

textures of tropical Queensland, the Coral Adventurer is a comfortable ship. She features promenade decks, generous communal areas that accommodate all guests, a passenger elevator, and an open kitchen where you can observe our chefs whip up small batch cuisine from locally sourced ingredients. BUILT FOR PERSONAL SERVICE The Coral Adventurer will continue a proud tradition of Australian flagged vessels with friendly and professional Australian crew. The onboard atmosphere remains refreshingly informal and intimate. Take your seat at our bridge lounge, chat with the captain at your leisure or accompany our chefs on a market tour. Food and wine features Single seating dining area with communal 'wine table' finished with Australian stone; serving buffet breakfast and lunch, and multi-course table d'hôte dinners Showcase galley visible to guests for fresh small-batch cuisine featuring Australian produce Multiple indoor and outdoor bars, including the Explorer bar on the sundeck for sunset drinks with 180 degree views Curated wine cellar featuring modestly priced boutique wines for daily drinking and exceptional vintage Australian reds. Guest comfort All outside guest cabins with en-suite bathrooms; majority have private balcony Active stabilisers to dampen sea motion Gym equipped with elliptical trainers and treadmills Passenger elevator Wi-Fi available in all

The Small Cruise Ship Collection
www.small-cruise-ships.com

01432 507 280 (within UK)

info@small-cruise-ships.com | small-cruise-ships.com





The Small Cruise
Ship Collection

www.small-cruise-ships.com

small-cruise-ships.cominfo@small-cruise-ships.com



guest areas

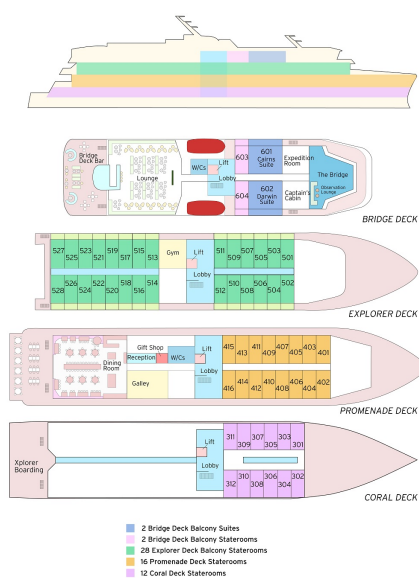
The Small Cruise Ship Collection

www.small-cruise-ships.com

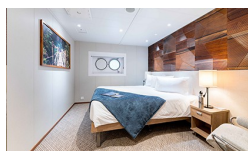
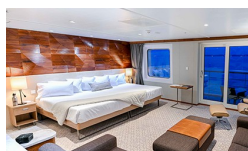
small-cruise-ships.com

info@small-cruise-ships.com

INSIDE YOUR SHIP

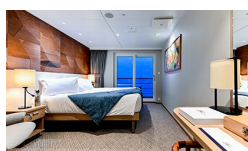
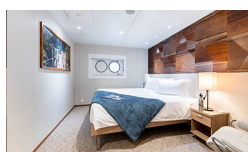


Bridge Deck Balcony Suite



Coral Deck Stateroom

Coral Deck stateroom for single occupancy

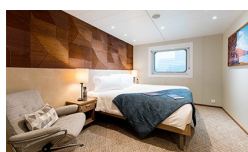


Explorer Deck Balcony Suite

Explorer Deck Balcony Stateroom for single occupancy

Promenade Deck Stateroom

Promenade Deck Stateroom for single occupancy





The Small Cruise Ship Collection

www.small-cruise-ships.com

small-cruise-ships.com

info@small-cruise-ships.com

PRICING

03-Dec-2025 to 20-Dec-2025

Explorer Deck Balcony Stateroom	£11980 GBP pp
Coral Deck Stateroom	£7492 GBP pp
Bridge Deck Balcony Suite	£16157 GBP pp
Promenade Deck Stateroom	£8986 GBP pp
Promenade Deck Stateroom for single occupancy	£13479 GBP pp
Explorer Deck Balcony Stateroom for single occupancy	£17975 GBP pp
Coral Deck stateroom for single occupancy	£11239 GBP pp