

The Small Cruise Ship Collection

www.small-cruise-ships.com

small-cruise-ships.com

info@small-cruise-ships.com

ISLAND BLISS IN THE INDIAN OCEAN - CRUISE FROM MALAYSIA TO SEYCHELLES

Dream beneath palm trees, explore tropical wildlife and find peace in the vastness of the ocean: when the EUROPA sets sail for dream islands from Malaysia to the Seychelles, you can expect adventure and relaxation in perfect harmony.



ITINERARY

Day 1 Port Kelang (Kuala Lumpur)/Malaysia, departure 24.00 hrs

Day 2 Relaxation at sea

Day 3 Porto Malai/Langkawi/Malaysia, 07.00 - 18.00 hrs

Langkawi, the main island in an archipelago of around 100 limestone islands, is an inviting place to explore dream beaches and spectacular nature. Rainforests, plantations, rice fields and romantic waterfalls will ensure you soon forget your everyday

The Small Cruise Ship Collection

www.small-cruise-ships.com

01432 507 280 (within UK)

info@small-cruise-ships.com | small-cruise-ships.com



The Small Cruise Ship Collection

www.small-cruise-ships.com

small-cruise-ships.com

info@small-cruise-ships.com

worries. For a special kind of adventure, take a ride on the SkyCab cable car, which swings over the thick jungle and impressive rock formations, offering breathtaking views over the turquoise sea and surrounding islands. Langkawi offers the ideal combination of relaxation and nature.

Days 4 - 6 Relaxation at sea

Day 7 Hambantota/Sri Lanka, 07.00 – 20.00 hrs

The south coast of Sri Lanka is your gateway to the island's wild side: Hambantota, the centre of the district of the same name, is the perfect base for exploring the impressive wilderness and natural beauties of Sri Lanka. Nearby is Yala National Park, famous for having the highest concentration of leopards in the world and for its fascinating animal kingdom. You can follow in their tracks on a photo safari. Udawalawe National Park around the shores of Udawalawe Reservoir has a large elephant population - in the adjacent elephant orphanage visitors can learn interesting facts about these gentle giants. Bundala National Park offers plenty of variety: around 200 species of bird spend the winter here.

Day 8 Relaxation at sea

Day 9 Lohifushi (Hudhuranfushi)/North Male Atoll/Maldives, 08.30 – 17.30 hrs

Water sports enthusiasts will find a special Garden of Eden on Lohifushi in the North Male Atoll. While sun worshippers spend the daydreaming on the fine sand and snorkellers observe the underwater world up close in the shallow water, kitesurfers wait for the perfect wave off the coast. With its snow-white sandy beach and crystal-clear water, the island promises a fantastic day of swimming and a spectacular play of colours.

Day 10 Kuda Finolhu/South Male Atoll/Maldives, 08.00 – 17.00 hrs

Uninhabited Kuda Finolhu is located in the South Male Atoll of the Maldives and is a paradise come true with unspoilt nature and a peaceful atmosphere. The white sandy beach invites visitors to stroll, relax and enjoy unlimited swimming. Here, the sun reflects in the warm water and the prettiest shades of blue and turquoise, while an exceptional diversity of species reside underwater - from manta rays to colourful coral reefs.

Days 11 - 13 Relaxation at sea

Day 14 Praslin/Seychelles, 08.00 – 18.00 hrs

White sandy beaches lined with palm forests, including Anse Georgette and Anse Lazio, are the idyllic picture-perfect spots on Praslin, the second-largest island in the Inner Seychelles. Anse Lazio in particular, surrounded by impressive granite cliffs, is one of the most beautiful beaches in the region. The island's interior is home to Praslin's national park, the UNESCO World Heritage Site Vallee de Mai. This is where the ancient Seychelles coco de mer palm trees, some of which are over 1,000 years old, grow. Together with around 43 other species of plant and rare animals like the black parrot, they form a unique natural paradise.

Day 15 Curieuse/Seychelles, 08.00 – 24.00 hrs

Curieuse, the fifth-largest island in the Inner Seychelles, is located very close to its sister island Praslin and is a true natural paradise. The island, which is only about 3 km² (1.1 mi.²) in size, delights visitors with a diverse mangrove landscape where eight different species grow. Curieuse has been a protected nature reserve and part of the Curieuse Marine National Park for decades. A research station and a rescue and breeding station are dedicated to the conservation of Aldabra giant tortoises:

The Small Cruise Ship Collection

www.small-cruise-ships.com

01432 507 280 (within UK)

info@small-cruise-ships.com | small-cruise-ships.com



The Small Cruise
Ship Collection

www.small-cruise-ships.com

small-cruise-ships.com

info@small-cruise-ships.com

visitors have the rare opportunity to get up close to these impressive animals in the wild. In the south-west of the island, the historic Doctor's House - once a leper colony, now a museum - tells the eventful history of the island. Look forward to an exclusive destination whose backdrop promises a variety of experiences until late in the evening.

Day 16 La Digue/Seychelles, 08.00 - 17.00 hrs Victoria/Mahe/Seychelles, arrival 21.00 hrs Overnight stay on board

La Digue, the fourth-largest island in the Seychelles, is legendary for its relaxed atmosphere and imposing granite cliffs: the colossal rounded rocks are particularly impressive at the idyllic Anse Source d'Argent, which is perfect for bathing thanks to its shallow turquoise waters. There are hardly any cars on La Digue and most people use bicycles to get around. It's a great way to explore the island and its hidden wild beaches in the north. In the south of the island is the L'Union Estate, a former plantation estate, which provides insights into the traditional trades of the island and is home to two extremely rare species of terrapin.

Day 17 Victoria/Mahe/Seychelles

Please note:

* The shore activities are not included in the cruise price and are in the planning stage. Subject to change.

The Small Cruise
Ship Collection

www.small-cruise-ships.com

01432 507 280 (within UK)

info@small-cruise-ships.com | small-cruise-ships.com

The Small Cruise Ship Collection

www.small-cruise-ships.com

small-cruise-ships.com

info@small-cruise-ships.com

YOUR SHIP: EUROPA

YOUR SHIP: Europa

VESSEL TYPE:

LENGTH:

PASSENGER CAPACITY:

BUILT/REFURBISHED:

Extensive space for a maximum of 400 guests A crew-to-guest ratio of almost one to one Outside suites only, most with a veranda Five restaurants for the ultimate in culinary indulgence - including THE GLOBE by three-star chef Kevin Fehling Top-class entertainment: experience international artists and experts live on board EUROPA Refresh: new fitness and wellness concepts for even more well-being MS EUROPA is an award-winning luxury cruise ship renowned for setting global standards in refined small-ship cruising. Accommodating a maximum of just 400 guests, the ship offers an intimate and highly personalised experience, supported by an almost one-to-one crew-to-guest ratio. Designed around the concept of casual luxury, EUROPA combines spacious surroundings, attentive service, and elegant all-suite accommodation, with all suites featuring ocean views and most offering private verandas. Onboard, guests can enjoy five exceptional restaurants, including fine dining concepts created in collaboration with acclaimed chefs, alongside world-class entertainment, wellness facilities, and thoughtfully curated enrichment experiences. The ship's smaller size allows access to unique itineraries and exclusive ports beyond the reach of larger vessels, while recent EUROPA Refresh

enhancements have introduced updated fitness and wellness concepts for an even more elevated onboard experience. Blending sophistication, comfort, and flexibility, MS EUROPA delivers a truly premium voyage to destinations



worldwide.

The Small Cruise Ship Collection

www.small-cruise-ships.com

01432 507 280 (within UK)

info@small-cruise-ships.com | small-cruise-ships.com

The Small Cruise Ship Collection

www.small-cruise-ships.com

small-cruise-ships.com

info@small-cruise-ships.com

INSIDE YOUR SHIP

Penthouse Deluxe Suite



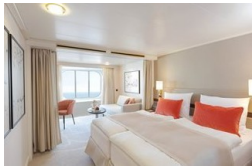
Penthouse Grand Suite



SPA Suite



Suite with panorama window



Veranda Suite Cat. 4-5

Veranda Suite Cat. 6-7



The Small Cruise Ship Collection

www.small-cruise-ships.com

small-cruise-ships.com

info@small-cruise-ships.com

PRICING

21-Apr-2028 to 07-May-2028

Suite with panorama window	£6085 GBP pp
Veranda Suite Cat. 4-5	£8459 GBP pp
Veranda Suite Cat. 6-7	£10979 GBP pp
SPA Suite	£11849 GBP pp
Penthouse Deluxe Suite	£18899 GBP pp
Penthouse Grand Suite	£29965 GBP pp