

# The Small Cruise Ship Collection

www.small-cruise-ships.com



small-cruise-ships.com

info@small-cruise-ships.com

## ISFJORDEN ADVENTURE, LATE ARCTIC AUTUMN & AURORA

Embark on a scenic exploration of the deep Arctic, visiting the mountain-fringed bay of Trygghamna, the jagged blue glacier front at Borebukta, and the icy panorama of Isfjord, Svalbard's second largest fjord – along with stops at Russian ghost towns, geological wonders, and wintry shorelines sparkling under the eerie green auroras of the northern lights.



### ITINERARY

#### Day 1: Largest town, biggest island

Your voyage begins in Longyearbyen, the administrative center of Spitsbergen, the largest island of the Svalbard archipelago. Enjoy strolling around this former mining town, whose parish church and Svalbard Museum make for fascinating attractions. Though the countryside appears stark, more than a hundred species of plant have been recorded in the surrounding area. In the early evening the ship sails out of Isfjorden, where you might spot the first whale of your voyage.

#### Day 2: From Arctic mountains to mining towns

Your aim for the morning is Trygghamna. From this mountain-fringed bay, you may make excursions to a former English whaling station, the remains of a Pomor house, and the



## The Small Cruise Ship Collection

[www.small-cruise-ships.com](http://www.small-cruise-ships.com)

[small-cruise-ships.com](http://small-cruise-ships.com)

[info@small-cruise-ships.com](mailto:info@small-cruise-ships.com)

base of Alkhornet Mountain. In addition to the seabirds, you might see Arctic foxes and reindeer here. Later that afternoon, you sail to the Russian mining town of Barentsburg, Svalbard's second-largest town. Here you'll encounter the world's northernmost brewery, a heated seawater swimming pool, a historic statue of Lenin, the must-see Barentsburg Pomor Museum – and some very friendly Russians.

### Day 3: Sculptures of ice and stone

The goal is to spend the morning exploring the jagged blue glacier front at Borebukta, our first close encounter with the glaciated interior of Spitsbergen. You may also pay a visit to the east coast of Bohemanflya in the afternoon, a peninsula with striking geological formations.

### Day 4: Northern fjords and northern lights

Your next morning introduces you to another glacier front: Sveabreen in Nordfjord, the most impressive in the Isfjord area. Afternoon finds you at the head of Dickson Fjord, the northernmost point of the voyage. This fjord branch also happens to be the place with the most stable weather and optimal conditions for seeing the northern lights.

### Day 5: The inner reaches of Isfjord

This day is reserved for sailing the extent of Isfjord, Svalbard's second largest fjord and a vast panorama of snow, ice, slopes, and sea. Depending on the conditions, you'll then sail into one of the other nearby fjords for further Arctic exploration.

### Day 6: Glaciers and ghost towns

The morning's mission is to visit the glacier front of Nordenskiöld, an enormity of Arctic ice that has every reason to leave you breathless. On the agenda for the afternoon is

Pyramiden, a deserted Soviet settlement that provides a hauntingly complete time capsule detailing how its resident coal miners lived many years ago.

### Day 7: The layered peaks of Skansbukta

On the second-to-last day, you tour the valley of Skansbukta and its beautiful geological formations. Enjoy the splendor of these stratified multicolored peaks, each one rising out of wide slopes of sediment like the guard towers of some ancient, eroded castle. Your return to Longyearbyen is planned for the early evening.

### Day 8: Journey's end in Longyearbyen

Every adventure, no matter how great, must eventually come to an end. You disembark in Longyearbyen, taking home a wealth of memories that will accompany you wherever your next adventure lies.

### Please Note:

The chances for observing northern lights are good during those late Arctic autumn voyages. In October the vessel will operate within the many protected branches of the Isfjorden. All itineraries are for guidance only. Programs may vary depending on local ice and weather conditions and in order to take advantage of opportunities to see wildlife. The on-board expedition leader determines the final itinerary. Itineraries may mention places that require permission to land, which must be granted by the relevant national authorities. Such permission is not granted prior to the publishing of these itineraries. Flexibility is paramount for expedition cruises. Willingness to compromise on comfort is a basic requirement on board of a historic traditional sailing vessel. Important information about the sailing program: the boat is equipped with sails and these will be used

The Small Cruise Ship Collection

[www.small-cruise-ships.com](http://www.small-cruise-ships.com)

01432 507 280 (within UK)

[info@small-cruise-ships.com](mailto:info@small-cruise-ships.com) | [small-cruise-ships.com](http://small-cruise-ships.com)



 The Small Cruise  
Ship Collection  
[www.small-cruise-ships.com](http://www.small-cruise-ships.com)

[small-cruise-ships.com](http://small-cruise-ships.com)

[info@small-cruise-ships.com](mailto:info@small-cruise-ships.com)

in good conditions (open sea, water depth, appropriate wind conditions, time availability). This is not guaranteed. The captain decides whether to use the sails or the engine. There is no claim to one or other propulsion method. If sails are used, they are operated by the crew. Guests follow the safety instructions of the team. Average cruising speed for s/v Noorderlicht is 6 knots.

# The Small Cruise Ship Collection

[www.small-cruise-ships.com](http://www.small-cruise-ships.com)



[small-cruise-ships.com](http://small-cruise-ships.com)

[info@small-cruise-ships.com](mailto:info@small-cruise-ships.com)

## YOUR SHIP: NOORDERLICHT

**YOUR SHIP:**

**Noorderlicht**

**VESSEL TYPE:**

**LENGTH:**

**PASSENGER CAPACITY:**

**BUILT/REFURBISHED:**

The Noorderlicht was originally built in 1910 in Flensburg, Germany as a three-masted schooner. For most of her existence she served as a light-vessel on the Baltic. In 1991 the present owners purchased the hull and re-rigged and refitted her thoroughly, under the rules of "Register Holland". The Noorderlicht now has a well-balanced two-masted schooner rig and is capable of sailing the seven seas. The qualified captains have a great experience of the oceans. Together with the rest of the crew, they will do everything possible to ensure that you have a wonderful and unforgettable journey. Ice class: The Noorderlicht has no ice class. She was anchored year around near Flensburg (Germany). Due to heavy ice conditions in the winter time, the bow of the Noorderlicht was strengthened. The vessel is not an ice breaker but has a strengthened bow.



The Small Cruise Ship Collection  
[www.small-cruise-ships.com](http://www.small-cruise-ships.com)

**01432 507 280** (within UK)

[info@small-cruise-ships.com](mailto:info@small-cruise-ships.com) | [small-cruise-ships.com](http://small-cruise-ships.com)



# The Small Cruise Ship Collection

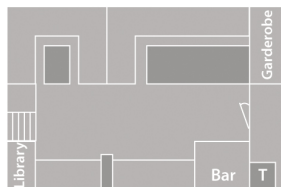
[www.small-cruise-ships.com](http://www.small-cruise-ships.com)



[small-cruise-ships.com](http://small-cruise-ships.com)

[info@small-cruise-ships.com](mailto:info@small-cruise-ships.com)

## INSIDE YOUR SHIP



s/v Noorderlicht deckplan

twin shared inside	upper and lower berth	Toilet
		Shower



The Small Cruise  
Ship Collection

[www.small-cruise-ships.com](http://www.small-cruise-ships.com)



[small-cruise-ships.com](http://small-cruise-ships.com)

[info@small-cruise-ships.com](mailto:info@small-cruise-ships.com)

## PRICING

---



The Small Cruise  
Ship Collection

[www.small-cruise-ships.com](http://www.small-cruise-ships.com)

**01432 507 280** (within UK)

[info@small-cruise-ships.com](mailto:info@small-cruise-ships.com) | [small-cruise-ships.com](http://small-cruise-ships.com)