



INUIT SPRING OF AMMASSALIK - GREENLAND LUXURY EXPEDITION

After the long polar night, the east coast of Greenland awakens, still cloaked in ice. Aboard *Le Commandant Charcot*, a technological cocoon, you will sail to the Ammassalik and Blosseville regions, which traditional ships cannot access during the spring season. Here, shifting ice sculpts landscapes of raw beauty and, as Inuit wisdom teaches, "only the present moment matters". Whether on board or on the ice, you will discover the wonders of this extraordinary part of the world, where you may catch a glimpse of cetaceans, polar bears and seabirds if you are patient enough. In the remote villages, you will be welcomed into colourful houses and experience warm, sincere encounters that will leave you with unforgettable memories.



ITINERARY

Day 1 REYKJAVÍK

Iceland's capital stretches along the edge of a vast bay in the west of the country. Perlan, the "Pearl of Reykjavik", a museum located on 'Oskjuhlíð hill, offers a panoramic view of the lush, green landscapes. A little further, one can easily spot the signpost showing the way to the evangelical Hallgrímskirkja church, and to the historical centre where one can stroll along the Skólavordustigur and the Laugavegur, two lively streets with charming small shops. For some relaxation just outside of the city, visitors have the opportunity to visit the Reykjanes



peninsula and its famous thermal lagoons of the Blue Lagoon.

Day 2 SAILING THROUGH THE DENMARK STRAIT

Lying between Greenland and Iceland, the Denmark Strait was crossed for the first time by the Vikings in the late 10th century, during Erik the Red's expeditions. In the Second World War, its waters were the theatre of a battle between the Kriegsmarine and the Royal Navy, on 24 May 1941. In the wintertime, extremely dense pack ice forms along the Greenlandic coasts and, while the Transpolar Drift sweeps icebergs along throughout the year, the strait is generally clear of ice during the summer. In the depths of the strait lies the world's largest waterfall, an undersea cataract formed by the difference in temperature between the cold waters of the Greenland Sea and the warmer waters of the Irminger Sea. Numerous cetacean species thrive in this rich ecosystem.

Days 3 - 8 EXPLORATION OF AMMASSALIK REGION

Still relatively unknown just a century ago, the east coast of Greenland remains the most authentic and majestic region in the Arctic. Explore this part of the world where the alpine mountains merge intimately with the sea and the fjords are adorned with high, snow-capped peaks and icebergs drifting or trapped in the pack ice. You will slowly immerse yourself in the heart of frozen landscapes of surreal beauty. The infinite variety of textures in the different types of ice creates an ever-changing scenery. Follow in the wake of the famous Pourquoi Pas?, the ship of Captain Jean-Baptiste Charcot who set off with his crew in 1934 to land Paul-Émile Victor in Ammassalik. A small island

of primitive and wild beauty, for his first ethnographic mission, during which he would study the Ammassalimiut, a little-known Inuit community. In this deceptively frozen landscape, the silence is broken only by the sounds of dogs and the grating of sled runners against the ice. You will receive a warm welcome in villages still protected by the fast ice. You will have the opportunity to discover the Inuit culture's ancestral traditions during joyous and authentic moments shared with the communities.

Day 9 BLOSSEVILLE COAST

Aboard your ship, follow in the footsteps of Jules Poret de Blosseville, a French explorer and sailor. In 1833, aboard La Lilloise, he set off to discover this isolated and unexplored part of eastern Greenland and gave French names to various sites on the coast. The adventure probably has an unfortunate outcome, since the crew was never found. This uninhabited territory, which now bears his name, lies to the south of Scoresby Sund. Surrounded by ice, icebergs and pieces of pack ice, Blosseville Coast is one of these wild and hard-to-reach places that very few people are lucky enough to explore.

Day 10 SAILING THROUGH THE DENMARK STRAIT

Lying between Greenland and Iceland, the Denmark Strait was crossed for the first time by the Vikings in the late 10th century, during Erik the Red's expeditions. In the Second World War, its waters were the theatre of a battle between the Kriegsmarine and the Royal Navy, on 24 May 1941. In the wintertime, extremely dense pack ice forms along the Greenlandic coasts



and, while the Transpolar Drift sweeps icebergs along throughout the year, the strait is generally clear of ice during the summer. In the depths of the strait lies the world's largest waterfall, an undersea cataract formed by the difference in temperature between the cold waters of the Greenland Sea and the warmer waters of the Irminger Sea. Numerous cetacean species thrive in this rich ecosystem.

Day 11 REYKJAVÍK

Iceland's capital stretches along the edge of a vast bay in the west of the country. Perlan, the "Pearl of Reykjavik", a museum located on 'Oskjuhlíð hill, offers a panoramic view of the lush, green landscapes. A little further, one can easily spot the signpost showing the way to the evangelical Hallgrímskirkja church, and to the historical centre where one can stroll along the Skólavordustigur and the Laugavegur, two lively streets with charming small shops. For some relaxation just outside of the city, visitors have the opportunity to visit the Reykjanes peninsula and its famous thermal lagoons of the Blue Lagoon.

Please Note:

Itineraries are subject to change.



The Small Cruise Ship Collection

www.small-cruise-ships.com

small-cruise-ships.com

info@small-cruise-ships.com

YOUR SHIP: LE COMMANDANT-CHARCOT

YOUR SHIP: Le Commandant-Charcot

VESSEL TYPE:

LENGTH:

PASSENGER CAPACITY:

BUILT/REFURBISHED:

With its hybrid propulsion combining liquefied natural gas (LNG) and electric generators, Le Commandant-Charcot has been designed to minimise the environmental impact of travel to the furthest latitudes. The decoration of the ship, designed by two internationally renowned design and architecture firms - the studio of Jean-Philippe Nuel and Wilmotte & Associes - is designed to be in harmony with the environment. The approach is contemporary with the desire to create a warm and elegant setting; stone, wood and leather recall the natural environment in which the ship is sailing. Equipped with just 135 staterooms including 31 suites with balconies and outside views, Le Commandant-Charcot welcomes you in an intimate and refined atmosphere. Outstanding gastronomy in the two restaurants, relaxation in the indoor pool surrounded by its winter garden, relaxation in the well-being area with sauna and Snow Room... Like on a private yacht, each of our guests is unique. **PUBLIC AREAS** Le Commandant-Charcot has many common areas that are designed and equipped to meet all of your needs while preserving the intimacy of each passenger. A 177 m² reception area includes: A reception/concierge desk, An expeditions desk, The ship's administrative services, The sales office, manned by

our Hospitality & Travel Manager officer, Our boutique which sells clothing, jewellery, beauty products, postcards and various accessories, The image & photo desk. The different lounges include a 302 m² main lounge including a 28 m² cigar lounge, a tea corner and a bar, with live music on selected evenings, A 400 m² panoramic bar and lounge, An open-air Bar. The recreation spaces Fitness & Beauty Corner: Fitness room: Elliptic, running machines, bicycles... Beauty Corner: Hairdresser, Massage rooms, Sauna, Snow Room, Nail Shop. Pool area: Indoor Pool and winter garden - Outdoor Pool Theatre: Capacity: 270-276 - Main show room for conferences and live entertainment on selected evenings - State-of-the-art audio and video technology. Leisure area: Public areas - Library - Medical centre. 16



Zodiacs on board.





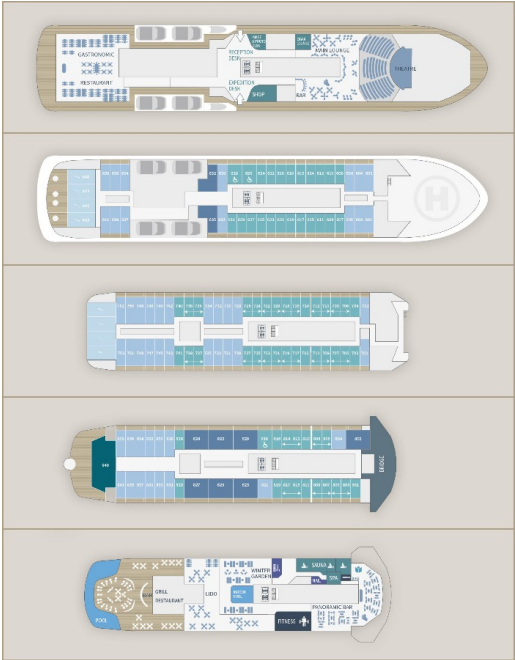
The Small Cruise Ship Collection

www.small-cruise-ships.com

small-cruise-ships.com

info@small-cruise-ships.com

INSIDE YOUR SHIP



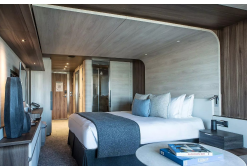
Deluxe Suite Deck 6



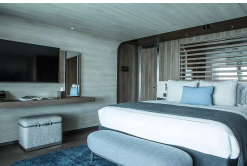
Deluxe Suite Deck 7



Deluxe Suite Deck 8



Duplex Suite



Grand Prestige Suite

Owner's Suite

Prestige Stateroom Deck 6

Prestige Stateroom Deck 7

Prestige Stateroom Deck 8

Prestige Suite Deck 7

Prestige Suite Deck 8

Privilege Suite Deck 8



The Small Cruise Ship Collection

www.small-cruise-ships.com

small-cruise-ships.com

info@small-cruise-ships.com

PRICING

04-May-2026 to 14-May-2026

Deluxe Suite Deck 6	£19105 GBP pp
Prestige Suite Deck 7	£26805 GBP pp
Deluxe Suite Deck 7	£20005 GBP pp
Deluxe Suite Deck 8	£20715 GBP pp
Grand Prestige Suite	£28589 GBP pp
Prestige Stateroom Deck 6	£17855 GBP pp
Prestige Suite Deck 8	£27689 GBP pp
Owner's Suite	£50049 GBP pp
Privilege Suite Deck 8	£30379 GBP pp
Prestige Stateroom Deck 8	£18565 GBP pp
Suite Duplex	£41995 GBP pp
Prestige Stateroom Deck 7	£18219 GBP pp

15-May-2027 to 25-May-2027

Deluxe Suite Deck 8	£15775 GBP pp
Deluxe Suite Deck 6	£14565 GBP pp
Prestige Suite Deck 7	£20375 GBP pp
Prestige Stateroom Deck 8	£14155 GBP pp
Prestige Suite Deck 8	£21049 GBP pp
Prestige Stateroom Deck 6	£13609 GBP pp
Duplex Suite	£31865 GBP pp
Deluxe Suite Deck 7	£15235 GBP pp
Grand Prestige Suite	£21729 GBP pp
Prestige Stateroom Deck 7	£13885 GBP pp
Privilege Suite Deck 8	£23085 GBP pp