



INSIDE PASSAGE & GLACIER BAY WILDERNESS CRUISE ABOARD SAFARI ENDEAVOUR

Whales and wildlife, kayaking and hiking. Thirteen days take you through the inside passages and Glacier Bay National Park plus remote wilderness, Native culture, and history. With over 20 years of exploring Alaska, nobody knows it better. Our captains and crew navigate its waterways and inlets as easily as walking the halls of their own vessel--and are always on the lookout. Spot a bear foraging for salmon on the shore and the captain swings back around so you can get a better look. There's nowhere better to be than right here.



ITINERARY

DAY 1 Seattle, Washington – Embarkation

Ah, the Emerald City! Check-in at the hospitality center and later, board your ship and settle in. Depending on your vessel, depart from downtown Seattle, cruising along the city's picturesque waterfront. Or from Fishermen's Terminal and transit historic Hiram M. Chittenden Locks, where it's a 20 foot drop into the Salish Sea. Adieu, Seattle. (D)

DAY 2 San Juan Islands, Washington/ Canada's Inside Passage

Each island in the San Juan archipelago is different. Orcas and harbor seals haven't picked favorites. You could spot them in



The Small Cruise Ship Collection

www.small-cruise-ships.com

small-cruise-ships.com

info@small-cruise-ships.com

any passage. Give your arms a stretch. Kayak or paddle board along a tucked away cove. Sea stars dot rocky outcroppings orange and purple. Curious harbor seals watch your moves. Get in more mileage on a skiff ride to further inlets. There will be time to hike too. Look low and nose around pools for creatures left behind by the outgoing tide. (BLD)

[DAY 3 Canada's Inside Passage](#)

Mountains rise higher. Fjords get deeper. It's a day of intricate waterways and cruising for critters, keeping watch for black bears on shore, including the elusive spirit bear. Civilization slips away as you enter remote waters leading north through British Columbia. Surf-happy dolphins and porpoise like to catch a ride on the bow wave. Your captain and crew are on the lookout and give the call of a sighting. And a waterfall and old abandoned cannery come into view. That's Butedale. Slow down and take it all in as forested fjords roll by. Aiming to entertain and educate over the next days, your expedition team is at the ready. Natural history, Native influences, and their favorite trivia games, too. (BLD)

[DAY 4 Canada's Inside Passage](#)

Take your cup of joe to the bow. The world wakes up with you. Bald eagles watch the ship along its course from tree tops. Islands to the west, inlet-etched mainland to the east. Your captain and mates navigate twisting passages. Harbor seals spend their days on rocky islets. Breathe in the fresh air and take in miles of forested wilderness. In the lounge, your bartender mixes up the daily special. Take the challenge and

play a few friendly hands of cards with your shipmate. (BLD)

[DAY 5 Ketchikan / Misty Fjords National Monument](#)

In Ketchikan, connect with the Tlingit Culture. Tribal leader and local legend Joe Williams, known as Ka Xesh X'e in his native language, guides you on a walking tour. With a rich oral tradition, the Tlingit passed stories from generation to generation-- and Joe's storytelling is captivating! Amble through the surrounding forest on a moderate to easy trail or challenge yourself to a hard-charger hike along trails and boardwalks past, cedar, spruce, streams, and waterfalls. Next up, Misty Fjords is the largest Wilderness Area in the Tongass National Forest and a haven for wildlife--grizzly and black bears, salmon, and deer. Calm settles over these parts and all you can hear is nature. Deep glacial fjords filled with seawater. Wetlands, estuaries, dense forests, and sweeping granite cliffs. Paddle through a bay, silty from the outwash of a mountain river. (BLD)

[DAY 6 Captains' Choice](#)

Just what you need, morning stretches on deck with your guide. Warm those hard-at-play muscles. You know firsthand--conditions in Southeast change one inlet to the next. Your captain is at the helm and your expedition team picks just the right spot. Wherever you head, the adventures are as big as the water is deep! So many hidden pockets in the Tongass National Forest. Give your paddle board skills a glide. Watch for big-eyed harbor seals from a kayak. Bushwhack into the forest of giants. Your guides know the area's history and keep it lively. (BLD)

The Small Cruise Ship Collection
www.small-cruise-ships.com

01432 507 280 (within UK)

info@small-cruise-ships.com | small-cruise-ships.com



The Small Cruise Ship Collection

www.small-cruise-ships.com

small-cruise-ships.com

info@small-cruise-ships.com

DAY 7 LeConte Bay / Ideal Cove

If it's high tide, a skiff ride brings you up-close to LeConte Glacier's iceberg gardens. Sculpted by the warm summer air, these glacial works of art are a testament to the mastery of Mother Nature. If tides are low, take a boot-sucking walk to check out icebergs resting on the mudflats. Surrounded by national forest, Ideal Cove's boardwalk trails wind through habitat known as "muskegs," boggy meadows of ferns and grasses. Or test your balance paddle boarding in this quiet cove. It's just you and the vast wilderness. (BLD)

DAY 8 Frederick Sound / Chatham Strait

Humpbacks beeline it to this region each season to feed on zooplankton and herring. Watch for whales feasting in these abundant glacial waters. Hang out and enjoy the show. Based on wind and weather, your expedition team has the lineup of adventures all mapped out. Cruise past Five Fingers Lighthouse, Alaska's oldest light station and The Brothers Islands, where sea lions nap on rocky nobs. From kayak or skiff, scope the intertidal zones of un-named bays and coves. Eagles fish here too, their white noggins give away their perches. Kayak into a seascape of wild, forested islets, or take the pace down a notch with an easy stroll amidst the tide pools. It's remote, and remarkable. (BLD)

DAY 9 Sitka / Peril Strait

Alaska's wild natural history surrounds the historic community of Sitka. It's a quick ride to Fortress of the Bear. Tour this home for

orphaned bears and observe their unique personalities. With access to the Tongass National Forest all around you, take the hint and take a hike--your guides know the way into the mountains to a clear lake and along boardwalk trails through a temperate rainforest to a waterfall. Later, set sail into Peril Strait and join your expedition guides who share the tragic tales of how this passage earned its foreboding name. (BLD)

DAY 10 Chichagof Island

Remote passages offer more opportunities for you to search for the mighty humpback whale. Keep your binoculars at hand and watch for the misty spout of these gentle giants as they feed in the waters around you. Anchor in a remote Chichagof Island inlet. Backpacks loaded and adventure toys lowered (skiffs, paddle boards, kayaks), it's time to go play. Stick to the water in a kayak excursion, and don't forget to look above and below the surface. A nosy seal could be watching your every stroke. Beachcomb rocky shores. Tiny creatures cling to rocks. Tonight, take a nightcap to the sun deck and watch the sky. (BLD)

DAY 11 Glacier Bay National Park

There's a cool factor, and it's not just coming off the face of the glaciers! This 3.3 million-acre park was covered by ice as recently as 1795. Since then, the park's receding glacier activity has made it easier to access those inner reaches. Glacial history, retreats, advances, moraines. They come with expert insight from a park ranger and your onboard naturalists, so bring on the questions. Pigeon guillemots, puffins, common murrelets, and cormorants colonize and nest at South Marble Island. One

The Small Cruise Ship Collection
www.small-cruise-ships.com

01432 507 280 (within UK)

info@small-cruise-ships.com | small-cruise-ships.com



good whiff and a few loud barks give away one of its mammalian residents--Steller's sea lions. It's a full day in the bay exploring Muir's legacy--all the way to Grand Pacific and Margerie Glaciers. Celebrate with a toast to nature's handiwork. (BLD)

days may occur to maximize your experience.

DAY 12 Icy Strait

Bull whip kelp threads through nearby channels like deep, twisted mangroves. And you know better, but orange and purple starfish and jellyfish make it hard to believe you're not in the tropics. Follow the currents out to where the sea lions flock to remote rock formations. Your captain is on the bridge, the expedition team on deck, and all eyes are on the water and the shore. Everyone is on-watch for the telltale blow of humpbacks. Come closer to the shoreline by skiff, kayak, or on foot. Sometimes the smallest things are the biggest wonders. Take in the evening solitude from the bow, or the hot tub. Or both-- why choose just one? Tonight, join your captain for the Farewell Dinner. As a special treat, your expedition team shares a slideshow of your journey. (BLD)

DAY 13 Juneau, Alaska - Disembarkation

Disembark after breakfast. Transfer to the Juneau airport or begin your UnCruise overnight stay or extended land tour. (B)

Please Note:

Itineraries are guidelines; variations in itinerary and the order of



The Small Cruise Ship Collection

www.small-cruise-ships.com



small-cruise-ships.com

info@small-cruise-ships.com

YOUR SHIP: SAFARI ENDEAVOUR

YOUR SHIP: Safari Endeavour

VESSEL TYPE:

LENGTH:

PASSENGER CAPACITY:

BUILT/REFURBISHED:

The ambience aboard this newly refurbished 86-guest yacht is casual elegance with a full menu of upscale amenities. Its new design is exquisitely appointed with features such as an intimate Wine Bar and spa area including two hot tubs, sauna, fitness equipment, yoga classes, and massage suite (complete with a complimentary massage.) The Safari Endeavour's three decks provide ample outside viewing opportunities and relaxing public spaces for gathering with new found friends. The EZ Dock launch platform makes launching a kayak or stand-up paddle board and boarding a skiff easy. Onboard adventure equipment includes kayaks and stand-up paddle boards; inflatable skiffs; hiking poles; yoga mats; and hydrophones for listening to below surface sounds. There are five stateroom categories aboard the Safari Endeavour: Master; Commander; Captain; Admiral; and Commodore Suite. Depending on the category, singles, doubles or triples can be accommodated. Common to all staterooms are: Flat-screen TV/DVD; iPod docking station. Read about an extraordinary cruise week on Safari Endeavour in Alaska



The Small Cruise Ship Collection

www.small-cruise-ships.com

01432 507 280 (within UK)

info@small-cruise-ships.com | small-cruise-ships.com

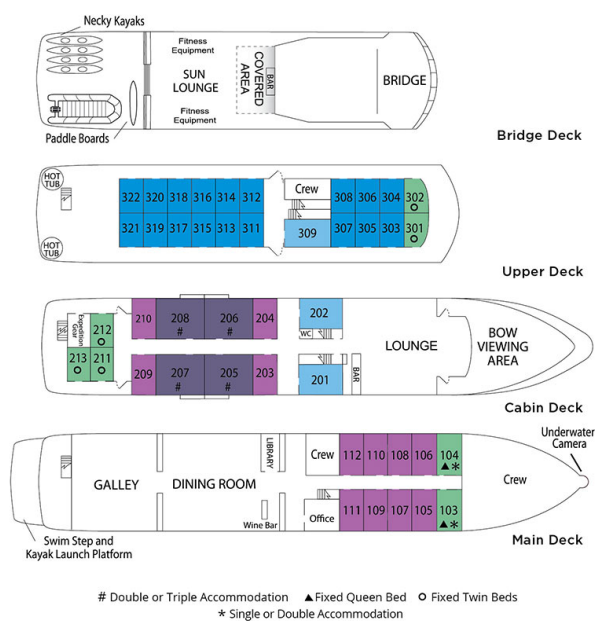
The Small Cruise Ship Collection

www.small-cruise-ships.com

small-cruise-ships.com

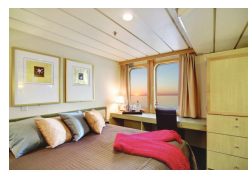
info@small-cruise-ships.com

INSIDE YOUR SHIP



cabin/ship diagram not to scale

Admiral Cabin



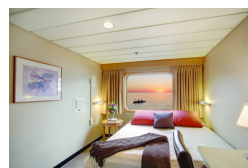
Commodore Suite



Navigator Cabin



Pathfinder Cabin





The Small Cruise Ship Collection

www.small-cruise-ships.com



small-cruise-ships.com

info@small-cruise-ships.com

PRICING

28-Sep-2024 to 10-Oct-2024

Pathfinder Cabin	£6557 GBP pp
Trailblazer Cabin	£6083 GBP pp
Single Navigator Cabin	£9717 GBP pp
Admiral Cabin	£7189 GBP pp
Commodore Suite	£10191 GBP pp
Navigator Cabin	£5530 GBP pp

ADDITIONAL CHARGES:

Port taxes/fees. From 675 USD pp



The Small Cruise Ship Collection

www.small-cruise-ships.com

01432 507 280 (within UK)

info@small-cruise-ships.com | small-cruise-ships.com