



The Small Cruise  
Ship Collection

www.small-cruise-ships.com

small-cruise-ships.com

info@small-cruise-ships.com

## INFINITY GALAPAGOS 8 DAY CRUISE B

Embark on an extraordinary journey through the enchanting Galapagos Islands with this thrilling itinerary. The adventure begins on San Cristobal Island, where you'll arrive at the airport and transfer to your boat to explore the captivating Puerto Chino or Breeding Center David Rodriguez. On Wednesday, set foot on Santa Fe Island in the morning, followed by an afternoon visit to the fascinating South Plaza Island. The following day, head to the iconic Tortoise Breeding Center and explore the impressive Twin Craters on Santa Cruz Island. As the week progresses, the itinerary takes you to the breathtaking Isabela Island, where you'll discover the diverse landscapes of Moreno Point, Elizabeth Bay, Urbina Bay, and Tagus Cove. Witness the unique wonders of Fernandina Island's Espinosa Point and Isabela Island's Vicente Roca Point, before exploring Santiago Island's Egas Port and the picturesque Bartholomew Island. The unforgettable experience concludes with a visit to North Seymour Island before bidding farewell to the Galapagos, leaving with cherished memories of a truly unforgettable wildlife and nature adventure.



### ITINERARY

#### Day 1: Tuesday SAN CRISTOBAL ISLAND

In the morning: San Cristobal airport arrival You will arrive at San Cristobal Island in the morning. After passing through immigration and baggage claim, you will be met by a Infinity staff member and transferred to the yacht. You will be shown to your cabin where you will have some time to settle in before lunch and a welcome briefing. In the afternoon: Puerto Chino Puerto Chino is located 15,2 miles (24.5 km) away from Puerto Baquerizo Moreno and a few miles from the Breeding Center Cerro Colorado. This walk takes approximately 30 minutes to the beach. Afterwards: David Rodriguez Breeding Center "La Galapaguera" Breeding Center David Rodriguez - "La Galapaguera", in Cerro Colorado, is a new visitor site in the



## The Small Cruise Ship Collection

[www.small-cruise-ships.com](http://www.small-cruise-ships.com)

[small-cruise-ships.com](http://small-cruise-ships.com)

[info@small-cruise-ships.com](mailto:info@small-cruise-ships.com)

southeast part of San Cristobal Island and can now be reached in roughly one hour by road from Puerto Baquerizo Moreno. On the trees and shrubs surrounding the site, you may see land birds like warblers, finches and mockingbirds. Giant tortoises can be observed on the trails. They live there wild but in a protected area to ensure their survival by sealing them off from introduced predators like pigs and goats.

#### Day 2: Wednesday SANTA FE AND SOUTH PLAZA ISLANDS

In the morning: Santa Fé Island Santa Fe Island (Barrington) is home to the small picturesque bay and anchorage on the island's northeast coast. The bay has two visitor trails: one leading to a scenic viewpoint atop a cliff, and the other spanning from a small beach to a tall prickly pear cactus forest. In the afternoon: South Plaza Island This small island with steep cliffs was formed by rising lava and is now covered by Opuntia cacti. It is also home to one of the largest sea lion colonies as well as colorful yellow and red land iguanas. The most characteristic plant is the Sesuvium. During the rainy season its color is a greenish to yellowish tone and in the dry season (end of June through January) a bright red.

#### Day 3: Thursday SANTA CRUZ ISLAND

In the morning: Fausto Llerena Breeding Center You will visit "Fausto Llerena" Giant Tortoises Creeding Center in Puerto Ayora, Santa Cruz Island, where giant tortoises are bred in captivity; this is home to tortoises ranging from 3-inches (new hatchlings) to 4-feet long adults. Subspecies of the giant tortoises interact with one another, and many of the older tortoises are accustomed to humans stretching out their heads for a photo opportunity. The babies are kept until they are about four years-old and strong enough to survive on their own. In the afternoon: Twin Craters You will visit the Twin Craters located

opposite to each other on both sides of the road leading from Puerto Ayora to Baltra. The name is only figurative; not real craters, these formations were created by the collapse of surface material in underground fissures and chambers. The view is breathtaking.

#### Day 4: Friday ISABELA ISLAND

In the morning: Moreno Point Moreno Point is located southwest of Elizabeth Bay. Here a dry landing onto what was once owing lava is possible. The lava has left craters in its wake which formed crystal tide pools. By looking into the pools, you can peer into another world as the marine life drifts by your window. In the brackish pools of this area, you may see pink flamingos, white-cheeked pintails, and common gallinules. If you look carefully into the pools, you may see white-tip reef sharks and some sea turtles. In the afternoon: Elizabeth Bay Elizabeth Bay is located on the east coast of Isabela Island. The bay contains many islets, which can be visited by dinghy. Penguins and blue-footed boobies can be spotted on the rocky islets. With an abundance of marine life and clear water, the area is perfect for snorkeling and viewing schools of colorful fish, sea lions, and perhaps even sharks.

#### Day 5: Saturday ISABELA ISLAND

In the morning: Urbina Bay Urbina Bay is located at the base of Alcedo Volcano on the west coast between Tagus Cove and Elizabeth Bay. This area experienced a major uplift in 1954 causing the land to rise over 16 feet. The coast expanded half a mile out leaving marine life stranded on the new shore. This area is also a great place for snorkeling. In the afternoon: Tagus Cove In the morning, you will visit Tagus Cove on Isabela Island which is located across from Fernandina Island, near the Bolivar Channel dividing the two islands. This spot has been frequented



The Small Cruise Ship Collection

[www.small-cruise-ships.com](http://www.small-cruise-ships.com)

**01432 507 280** (within UK)

[info@small-cruise-ships.com](mailto:info@small-cruise-ships.com) | [small-cruise-ships.com](http://small-cruise-ships.com)



## The Small Cruise Ship Collection

[www.small-cruise-ships.com](http://www.small-cruise-ships.com)

[small-cruise-ships.com](http://small-cruise-ships.com)

[info@small-cruise-ships.com](mailto:info@small-cruise-ships.com)

by ships since the 1800s, using the area as an anchorage site. Trails winding by Lake Darwin up to a ridge display wonderful views.

### Day 6: Sunday FERNANDINA AND ISABELA ISLANDS

In the morning: Espinoza Point Crossing the Bolivar Channel that divides Isabela and Fernandina Islands, you will land at Espinoza Point, and after walking past a colony of marine iguanas and a group of sea lions, you will reach the island's highlight: the flightless cormorant nesting site. This area also provides a great opportunity to see the Galapagos hawk. In the afternoon: Vicente Roca Point Comprised of two separate coves, Vicente Roca Point is a large bay with spectacular sea life. Keep an eye out for seahorses, sea turtles, and the strange yet fascinating Mola mola (or sun fish) while you snorkel.

### Day 7: Monday SANTIAGO AND BARTHOLOMEW ISLANDS

In the morning: Egas Port Egas Port, also known as James Bay, on Santiago Island is home to the curious Galapagos hawks and quick-footed Galapagos lava lizards. The trail leads to the coastline with gorgeous tide pools and grottos full of fauna. Here the Galapagos furseals bathe in the sun. This is also a great snorkeling site. In the afternoon: Pinnacle Rock You will head to Bartholomew Island where the famous Pinnacle Rock is found. Bartholomew consists of an extinct volcano with a variety of red, orange, black and even green volcanic formations. We will take a trail of stairs to the summit of the volcano (about 30 or 40 minutes) where you will enjoy one of the best views of the islands! You will also visit a small, beautiful beach surrounded by the only vegetation found on this barren island. The beach is perfect for snorkeling where you may even see and swim with Galapagos penguins.

### Day 8: Tuesday NORTH SEYMOUR ISLAND

In the morning: North Seymour In North Seymour you may see Galapagos sea lions, blue-footed boobies, and magnificent frigate birds which are abundant on this island. North Seymour was formed by a series of submarine lava flows containing layers of sediment that were uplifted by tectonic activity. The island is characterized by its arid vegetation zone. Afterwards: Baltra Airport Departure After this final visit, you will be transferred to the Baltra airport in time for your flight back to the mainland.

### Please Note:

Itineraries are subject to change.



[www.small-cruise-ships.com](http://www.small-cruise-ships.com)

**01432 507 280** (within UK)

[info@small-cruise-ships.com](mailto:info@small-cruise-ships.com) | [small-cruise-ships.com](http://small-cruise-ships.com)



The Small Cruise  
Ship Collection

[www.small-cruise-ships.com](http://www.small-cruise-ships.com)



[small-cruise-ships.com](http://small-cruise-ships.com)

[info@small-cruise-ships.com](mailto:info@small-cruise-ships.com)

## YOUR SHIP: INFINITY

**YOUR SHIP:** Infinity

**VESSEL TYPE:**

**LENGTH:**

**PASSENGER CAPACITY:**

**BUILT/REFURBISHED:**

sundeck has a total surface of 250 m<sup>2</sup> (820 sq ft) with partial sun-shade cover of 70 m<sup>2</sup> (230 sq ft) and comfortable deck-beds for all passengers all with easy access to the Jacuzzi tub. The vessel has a rear platform to the sea with ladders for easy access into the water and offers two outdoor showers and two deck lavatories. VIP

The MV INFINITY (launched in 2015) is a 49m (161 ft) long, 8.8 m (28 ft) wide luxury vessel, with a cruising speed of nine knots, Infinity has the latest state-of-the-art equipment and amenities. Infinity carries a maximum of just 38 passengers in 19 twin or double cabins, guaranteeing an intimate setting for all guests. Cabins The modern cabins are fully equipped with air condition, safe deposit box, fire alarm, emergency lights and audio system for announcements by the captain or Tour Director. In addition each cabin has life jackets, desk and chair, wardrobe, night stand, small sofa and a porthole window. Bathrooms are equipped with toilet, shower, wash basin and hair dryer. All cabins have indoor passage access to the bar and restaurant area (except two main deck cabins that are connected to restaurant via deck). Cabin sizes \- Upper Deck VIP cabin, Twin/Double beds, size 15.7m<sup>2</sup>with balcony- Main DeckStandard cabin,Twin/Double beds, size 17m<sup>2</sup> with window-Lower Deck cabin, Standard Twin/Double beds, size 16/17m<sup>2</sup> Porthole Social Areas The spacious fully air-conditioned main deck dining room offers privacy for each guest including bar area with LCD TV, a corner buffet breakfast table and lounge area on the rear of the upper deck. The lounge



cabin balcony

The Small Cruise  
Ship Collection  
[www.small-cruise-ships.com](http://www.small-cruise-ships.com)

01432 507 280 (within UK)

[info@small-cruise-ships.com](mailto:info@small-cruise-ships.com) | [small-cruise-ships.com](http://small-cruise-ships.com)



# The Small Cruise Ship Collection

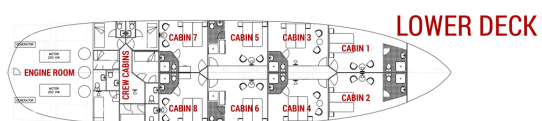
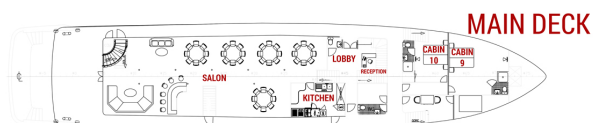
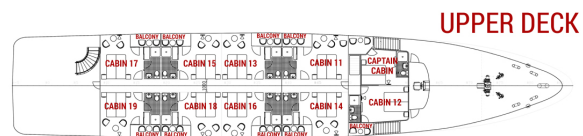
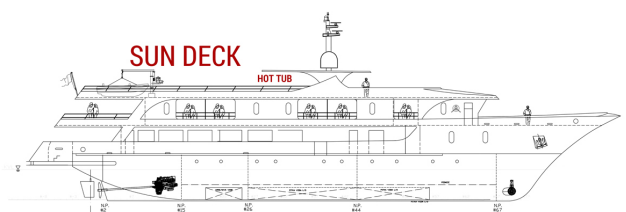
[www.small-cruise-ships.com](http://www.small-cruise-ships.com)



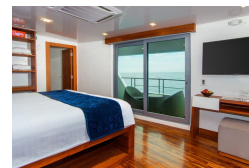
[small-cruise-ships.com](http://small-cruise-ships.com)

[info@small-cruise-ships.com](mailto:info@small-cruise-ships.com)

## INSIDE YOUR SHIP



Cabin





# The Small Cruise Ship Collection

[www.small-cruise-ships.com](http://www.small-cruise-ships.com)

[small-cruise-ships.com](http://small-cruise-ships.com)

[info@small-cruise-ships.com](mailto:info@small-cruise-ships.com)

## PRICING

**29-Jul-2025 to 05-Aug-2025**

Cabin	£6734 GBP pp
-------	--------------

**12-Aug-2025 to 19-Aug-2025**

Cabin	£6734 GBP pp
-------	--------------

**23-Sep-2025 to 30-Sep-2025**

Cabin	£6734 GBP pp
-------	--------------

**30-Sep-2025 to 07-Oct-2025**

Cabin	£6734 GBP pp
-------	--------------

**20-Jan-2026 to 27-Jan-2026**

Cabin	£6734 GBP pp
-------	--------------

**03-Feb-2026 to 10-Feb-2026**

Cabin	£6734 GBP pp
-------	--------------

**17-Feb-2026 to 24-Feb-2026**

Cabin	£6734 GBP pp
-------	--------------

**03-Mar-2026 to 10-Mar-2026**

Cabin	£6734 GBP pp
-------	--------------

**17-Mar-2026 to 24-Mar-2026**

Cabin	£6734 GBP pp
-------	--------------

**14-Apr-2026 to 21-Apr-2026**

Cabin	£6734 GBP pp
-------	--------------

**28-Apr-2026 to 05-May-2026**

Cabin	£6734 GBP pp
-------	--------------

**12-May-2026 to 19-May-2026**

Cabin	£6734 GBP pp
-------	--------------

**26-May-2026 to 02-Jun-2026**

Cabin	£6734 GBP pp
-------	--------------

**09-Jun-2026 to 16-Jun-2026**

Cabin	£6734 GBP pp
-------	--------------

**23-Jun-2026 to 30-Jun-2026**

Cabin	£6734 GBP pp
-------	--------------

**07-Jul-2026 to 14-Jul-2026**

Cabin	£6734 GBP pp
-------	--------------

**04-Aug-2026 to 11-Aug-2026**

Cabin	£6734 GBP pp
-------	--------------

**13-Oct-2026 to 20-Oct-2026**

Cabin	£6734 GBP pp
-------	--------------

**27-Oct-2026 to 03-Nov-2026**

Cabin	£6734 GBP pp
-------	--------------

**10-Nov-2026 to 17-Nov-2026**

Cabin	£6734 GBP pp
-------	--------------

**08-Dec-2026 to 15-Dec-2026**

Cabin	£6734 GBP pp
-------	--------------



The Small Cruise Ship Collection

[www.small-cruise-ships.com](http://www.small-cruise-ships.com)

**01432 507 280** (within UK)

[info@small-cruise-ships.com](mailto:info@small-cruise-ships.com) | [small-cruise-ships.com](http://small-cruise-ships.com)