

The Small Cruise Ship Collection

www.small-cruise-ships.com

small-cruise-ships.com

info@small-cruise-ships.com

INDONESIA AND EAST TIMOR: ON HIDDEN PATHS THROUGH MYSTERIOUS WORLDS CRUISE

Take the route that sails in a grand arc from Bali to Australia. On an exceptional and rare combination of routes, the HANSEATIC spirit will take you to the Lesser Sunda Islands and East Timor for the first time, with numerous hidden gems to discover.



ITINERARY

Day 1 Bena/Bali/Indonesia, departure 23.00 hrs

Day 2 Relaxation at sea

Day 3 Semarang/Java/Indonesia, 09.30 – 21.00 hrs

Coffee, sugar, tobacco and rubber - when it comes to exporting Java's local treasures, the port of Semarang is extremely important. With its fascinating mix of colonial heritage and Javanese culture, it is also the starting point for exploring the idyllic countryside in depth. A thirst for discovery finds fertile

The Small Cruise Ship Collection

www.small-cruise-ships.com

01432 507 280 (within UK)

info@small-cruise-ships.com | small-cruise-ships.com



The Small Cruise Ship Collection

www.small-cruise-ships.com

small-cruise-ships.com

info@small-cruise-ships.com

ground here: Passing coffee, cocoa and fruit plantations as well as artfully arranged rice paddies, excursions* will take you to the green heart of Java - Borobudur is one of South-East Asia's biggest Buddhist temple complexes and a UNESCO World Heritage Site. The stupa is believed to have been built during the reign of the Sailendra dynasty between AD 750 and 850. It was not until 1835 that the site was cleared of a layer of volcanic ash and uncovered again. The "hill of the 1,000 Buddhas" offers a journey through Java's religious heritage.

Day 4 Relaxation at sea

Day 5 Gili Islands/Indonesia

The Gili Islands lie in the crystal-clear water of the Java Sea like little emeralds. Indonesia's idylls, which only seem to belong to you when your expedition ship anchors here. The Zodiacs will take you ashore. Just a few metres above sea level, the islands invite you to go swimming and snorkelling. With a little luck, you will see sea turtles, which are protected there. Unwind on a relaxing shore visit.

Day 6 Relaxation at sea

Days 7 - 11 Lesser Sunda Islands/Indonesia (Riung , Maumere , Larantuka, Pulau Alor , Pulau Wetar)

The Lesser Sunda Islands stretch between Java and Timor, forming a geographical bridge between Asia and Australia. Volcanic peaks, emerald rainforests and pristine coral reefs shape this archipelago, which lies beyond the traditional travel routes. Historic trading towns, Indigenous traditions and unique flora and fauna make the region a paradise for explorers, adventurers and nature lovers.

Riung is located on the north coast of Flores and is the gateway to the 17 Islands Marine Park. Zodiacs take you to hidden lagoons, secluded beaches and colourful coral reefs. Sea turtles nest on remote islands, while the crystal-clear waters promise unforgettable snorkelling and diving experiences.

The island of Flores is famous for growing nutmeg, pepper and spices. Maumere, the cultural centre, combines lively markets, colonial churches and vibrant coastal life. In the surrounding villages, you will encounter artistic weaving, traditional fishing and colourful ceremonies.

Larantuka, in the east of Flores, is known for its Easter processions and Portuguese heritage. Cobblestone streets, old chapels and lively lanes tell of a colonial past and religious tradition. Here you can experience the unique blend of European influence and Indigenous everyday life up close.

Pulau Alor captivates visitors with its dramatic coastlines, clear lagoons and one of Indonesia's most spectacular coral reefs. Divers and snorkellers encounter colourful shoals of fish, rare manta rays and impressive steep walls. Traditional coastal villages offer insights into life among reefs, rice fields and volcanic hills.

Pulau Wetar is virtually untouched and rugged. Narrow paths lead through forests to hidden coves. The island provides a habitat for rare bird species. Here you can experience the remoteness and vastness of the Indonesian archipelago in its most pristine form.

Day 12 Kupang/West Timor/Indonesia

The Small Cruise Ship Collection

www.small-cruise-ships.com

01432 507 280 (within UK)

info@small-cruise-ships.com | small-cruise-ships.com



The Small Cruise Ship Collection

www.small-cruise-ships.com

small-cruise-ships.com

info@small-cruise-ships.com

Legendary seafaring history is in the air when you reach Timor: Captain William Bligh found refuge on the island after the famous mutiny on the *Bounty* in 1789, having navigated thousands of kilometres across the Pacific in a small boat. Today, the lively city of Kupang in south-western Timor welcomes you with colonial charm, colourful markets and exotic spices. Beaches, coral reefs and tropical landscapes line the coast and offer insights into the diverse culture and nature of eastern Indonesia. Traditional music, local textiles and the history of the former Dutch trading post will turn your shore visit into a journey back in time.

Days 13 - 14 East Timor (Dili, Com)

East Timor, the young nation in the east of the island of Timor, is a country full of contrasts: emerald-green mountains, expansive beaches and a rich underwater world. Away from major tourist centres, you will encounter a vibrant culture that combines Portuguese heritage, local traditions and modern lifestyles.

The capital city of Dili is located by the sea and is a mix of colonial architecture with bustling markets and urban life. There are several cafes and restaurants along the coast where you can enjoy the view of the water. Historic churches, Portuguese administrative buildings and modern murals characterise the cityscape and reflect the history and culture of East Timor.

Com is a remote tropical gem - uninhabited and virtually untouched, with white sandy beaches and rocky shores. The nature is wild and pristine, ideal for hiking along the coast and observing exotic bird species. The tranquillity and seclusion of Com invite you to experience the unspoilt beauty of East Timor in its purest form.

Day 15 Darwin/Australia, arrival 19.00 hrs Overnight stay on board

Darwin has a fascinating history, ranging from settlement by Indigenous peoples to destruction during the Second World War. The city was originally inhabited by the Larrakia Aboriginal people and was an important trading centre for pearl divers. During the Second World War, Darwin was heavily bombed and severely damaged. Nowadays, Darwin has developed into a modern and vibrant city. It is the capital of the Northern Territory and an important port for trade with Asia. Darwin is also known for its unique wildlife and natural beauty. The surrounding area offers spectacular national parks, waterfalls and breathtaking sunsets. Darwin is a popular destination for adventurous travellers who want to experience the unique culture and nature of Australia's top end.

Day 16 Darwin/Australia

Please note:

Itineraries are subject to change.

The Small Cruise Ship Collection

www.small-cruise-ships.com

01432 507 280 (within UK)

info@small-cruise-ships.com | small-cruise-ships.com



The Small Cruise
Ship Collection

www.small-cruise-ships.com

small-cruise-ships.com

info@small-cruise-ships.com

YOUR SHIP: HANSEATIC INSPIRATION

YOUR SHIP: Hanseatic Inspiration

VESSEL TYPE:

LENGTH:

PASSENGER CAPACITY:

BUILT/REFURBISHED:

The HANSEATIC inspiration, a small, state-of-the-art expedition ship with a maximum of 230 guests, offers a perfect blend of adventure and comfort for explorers seeking to uncover the world's wonders. As an international vessel conducting cruises in both English and German, it brings over 30 years of expertise from a market leader in German-speaking countries to every journey. Each expedition is a masterpiece, passionately crafted to reveal far-flung worlds--be it icy realms, tropical paradises, wildlife havens, or cultural gems--making every voyage a unique discovery aboard this exceptional ship. Features of all cabins and suites An ocean view with even more: exclusively outside cabins and suites, almost all with balconies or French balconies Spaciously designed - enjoy a relaxing stay in rooms from 21 m²/226 ft² up to 71 m²/764 ft² in size Exceptionally equipped - for example, with binoculars, Nordic Walking poles, air conditioning, coffee machine and mini bar (free of charge) and 24-hour cabin service Separable beds Rain shower and heated wall in bathroom (e.g. for towels and wet parkas) Extensive infotainment with live broadcast and recordings of expert presentations, forwardview camera, navigation chart, films and much more Restaurants Aboard the HANSEATIC inspiration, a

new kind of freedom blends adventure and pleasure with a culinary journey across three exceptional restaurants. The spacious HANSEATIC Restaurant offers flexible mealtimes and a free choice of seating, serving a daily-changing menu of global flavors inspired by local specialties, paired with fine wines and supported by attentive 24-hour cabin service. At the Lido Restaurant, guests can savor breakfast under the open sky or enjoy a perfectly grilled steak from the outdoor barbecue, complete with panoramic views and an open show kitchen. The specialty restaurant Nikkei fuses fine Japanese creations with modern Peruvian cuisine, delivering a unique dining experience that elevates exploration to new heights--all while bars in the Observation Lounge and HanseAtrium offer favorite drinks against stunning backdrops, from Nordic fjords to icy Antarctic vistas. Fitness and Wellness On the HANSEATIC inspiration, an extraordinary time out awaits after thrilling Zodiac rides, challenging hikes, or Arctic adventures. Unwind in the Ocean Spa, where a Finnish sauna with stunning ocean views, a gentle steam sauna, an ice fountain, and a relaxation room rejuvenate your senses, complemented by professional massages, cosmetic treatments, and eco-friendly products made from natural, vegan ingredients. Stay active in the 100 m² fitness room or separate course room--both with ocean vistas--guided by a fitness coach offering personalized advice and a variety of courses, either indoors or on deck. The pool area, with its flexible canopy, invites relaxation year-round, featuring water loungers, a whirlpool, and a bar, ensuring a perfect blend of indulgence and revitalization against the backdrop of the open sea. Knowledge Shore excursions and Zodiac rides come alive

The Small Cruise
Ship Collection

www.small-cruise-ships.com

01432 507 280 (within UK)

info@small-cruise-ships.com | small-cruise-ships.com



The Small Cruise
Ship Collection

www.small-cruise-ships.com

small-cruise-ships.com

info@small-cruise-ships.com

with deeper context through fascinating presentations in the HanseAtrium, a high-tech lounge where experts share daily precasts and recaps, doubling as an atmospheric evening bar for films and discussions. The Ocean Academy enhances the journey with a Study Wall and interactive poster of scientific insights, microscopes for exploring hidden wonders alongside experts, and Study Seats--with swivel touchscreens--for personal dives into science. Supported by travel diaries and destination videos, this immersive experience broadens horizons with cutting-edge tools and



expertise.



The Small Cruise
Ship Collection

www.small-cruise-ships.com

01432 507 280 (within UK)

info@small-cruise-ships.com | small-cruise-ships.com



The Small Cruise
Ship Collection

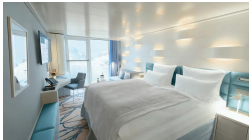
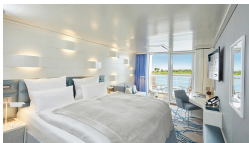
www.small-cruise-ships.com

small-cruise-ships.com

info@small-cruise-ships.com

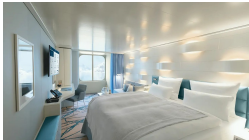
INSIDE YOUR SHIP

Balcony Cabin. From



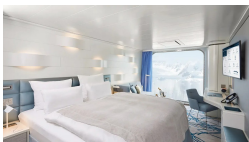
French Balcony Cabin. From

Junior Suite. From



Outside Cabin. From

Panoramic Cabin. From





The Small Cruise
Ship Collection

www.small-cruise-ships.com

small-cruise-ships.com

info@small-cruise-ships.com

PRICING

19-Apr-2028 to 04-May-2028

| | |
|----------------------------|---------------|
| Outside Cabin. From | £9435 GBP pp |
| Panoramic Cabin. From | £9979 GBP pp |
| French Balcony Cabin. From | £11045 GBP pp |
| Balcony Cabin. From | £11985 GBP pp |
| Junior Suite. From | £16635 GBP pp |