

The Small Cruise Ship Collection

www.small-cruise-ships.com



small-cruise-ships.com

info@small-cruise-ships.com

ICELANDIC MOSAIC - LUXURY CRUISE

On the edge of the Arctic, with its vast glaciers, vertiginous fjords and legendary volcanoes, Iceland offers a simultaneously romantic and wild face. During a unique 8-day journey, leaving from the world's northernmost capital, Reykjavik, you will fall in love with the enchanting landscapes as well as the singular biodiversity of the western coast of Iceland. Throughout your journey, you will benefit from an excursion included per person per port of call, to choose from a selection offered by PONANT. During this cruise, explore the spellbinding Snaefellsnes Peninsula from Grundarfjörður, discover the three sites of the Icelandic "Golden Circle" (Thingvellir, the "golden falls" of Gullfoss, and Geysir) from Reykjavik, or appreciate the tranquillity of the Geothermal Sea Baths in Husavik and the grandeur of the Godafoss waterfalls from Akureyri. The diversity of experiences on offer promises you intense and varied moments (to discover the full range of excursions, go to the itinerary tab). This is a veritable masterpiece by Mother Nature, where you will sail the icy waters of the North Atlantic on a quest for the most beautiful treasures offered by the "land of Ice and Fire". The lush hills and plains that border the coastline here create a stunning setting. Waterfalls tumble down jagged cliffs, their sparkling swell flowing along monumental basalt rocks, putting on a captivating spectacle. The fjords appear majestically, stretching their inlets in a protective embrace around small fishing villages full of colourful houses, while volcanoes and bubbling geysers will transport you into lunar landscapes like nothing else in the world. It is a real nature sanctuary, where the vast lush expanses of meadows are home to a myriad of migratory birds that have come from all over the

world to nest here, thus creating a melodious concert of spellbinding song. Arctic foxes sneak silently among the grassy valleys and Icelandic horses gallop along black sandy beaches. The ocean's cold waters are teeming with marine life, from humpback whales to orcas; these majestic cetaceans slide graciously through the waves, providing all their observers with an



unforgettable moment.

ITINERARY

Day 1 REYKJAVÍK



The Small Cruise Ship Collection

www.small-cruise-ships.com

small-cruise-ships.com

info@small-cruise-ships.com

Iceland's capital stretches along the edge of a vast bay in the west of the country. Perlan, the "Pearl of Reykjavik", a museum located on 'Oskjuhlíð hill, offers a panoramic view of the lush, green landscapes. A little further, one can easily spot the signpost showing the way to the evangelical Hallgrímskirkja church, and to the historical centre where one can stroll along the Skólavordustigur and the Laugavegur, two lively streets with charming small shops. For some relaxation just outside of the city, visitors have the opportunity to visit the Reykjanes peninsula and its famous thermal lagoons of the Blue Lagoon.

Day 2 SAILING AROUND SURTSEY ISLAND & HEIMAÆY, VESTMANNAEYJAR

A small drop of basalt in the North Atlantic Ocean, Surtsey is a volcanic island formed by a submarine eruption that lasted from 1963 to 1967, off the Westman Islands to the south of Iceland. The island is a UNESCO World Heritage Site. To protect its virgin ecosystem against human presence, it is forbidden to land there. Only a few scientists have access to Surtsey to study the plant and animal colonisation of the island. Mosses, fungi and lichens were followed by vascular plants. Around 300 invertebrate species and 90 bird species have gradually colonised it. While sailing around Surtsey, you will enjoy a unique panorama of this extraordinary island's contours.

This land seated off the southern coast of Iceland is the largest of the Vestmann islands, and is the only inhabited island in the archipelago. The steep Edfell volcanoes and the green prairies of Herjólfsdalur offer rich contrast of nature. On the Stórhöfði

road, look out over grey sand beaches and cliffs carved out by the Arctic ocean. From here, you can also see the bronze landscapes of the mountaintops. You could visit Eldheimar, an ultra-modern and interactive museum which traces the volcanic eruption has experienced Heimaey in 1973.

Day 3 GRUNDARFJÖRDUR

This secret boreal hideaway is located at the foot of the Kirkjufell, on Snaefellsnes peninsula. Arriving by boat means you will get a closer view of the lava-stone rock standing like a sentinel at the entrance to the bay; Grundarfjörður lies sheltered behind this cone-shaped rock. A stone's throw from the jetty, crystal clear waters, tundra and beaches give onto the cerulean waters of Breiðafjörður. Scattered with its emerald-coloured lawns, this town, with its buildings that merge into the surrounding countryside, will most certainly win your favour.

Day 4 GRÍMSEY

Grimsey is the northernmost island of Iceland surging from the Arctic ocean, with the Arctic circle running through the island. Its contrasted contours are surprising. From Grimseyjarhreppur, the island's only town located on the west coast, then heading due south, you can take in the beauty of the hillsides, lushly carpeted with moss and grass. On the rest of the coastline, imposing basalt cliffs inhabited by sea birds stand proud.

Day 5 AKUREYRI

The Small Cruise Ship Collection
www.small-cruise-ships.com

01432 507 280 (within UK)

info@small-cruise-ships.com | small-cruise-ships.com



The Small Cruise Ship Collection

www.small-cruise-ships.com

small-cruise-ships.com

info@small-cruise-ships.com

The elegant city of Akureyri is located very close to the Arctic circle, tucked away in the Eyjafjörður fjord. It displays a stunning palette of colours: blue waters in the harbour, bronze mountain ash on the squares and brightly-coloured houses in the historical centre. As you walk along the cobbled streets, you will come across rows of terraces with wooden furniture. A vast stairway cut into the hillside leads up to the emblematic feature of the town, namely the Akureyrarkirkja church. The very beautiful botanical garden made possible by a microclimate offers the opportunity to discover the Icelandic flora as well as plants from all over the world.

Day 6 ISAFJÖRDUR

Your ship will take you to the heart of the fjords of North-West Iceland, a wild land of lost valleys and steep cliffs, where man struggles to survive. In this very isolated region we find the Isafjörður fjord, undoubtedly one of the most beautiful in the country, mainly for its relief, forged by many very ancient basaltic flows. The town of Isafjörður, which nestles at the back of its fjord, between imposing mountains, is a delightful little town that lives exclusively from fishing. The capital of the Western fjords, its old wooden houses bear witness to its past as a major fishing port.

Days 7 - 8 REYKJAVÍK

Iceland's capital stretches along the edge of a vast bay in the west of the country. Perlan, the "Pearl of Reykjavik", a museum located on 'Oskjuhlíð hill, offers a panoramic view of the lush,

green landscapes. A little further, one can easily spot the signpost showing the way to the evangelical Hallgrímskirkja church, and to the historical centre where one can stroll along the Skólavordustigur and the Laugavegur, two lively streets with charming small shops. For some relaxation just outside of the city, visitors have the opportunity to visit the Reykjanes peninsula and its famous thermal lagoons of the Blue Lagoon.

Please Note:

Itineraries are subject to change.



The Small Cruise Ship Collection

www.small-cruise-ships.com

small-cruise-ships.com

info@small-cruise-ships.com

YOUR SHIP: LE BELLOT

YOUR SHIP: Le Bellot

VESSEL TYPE:

LENGTH:

PASSENGER CAPACITY:

BUILT/REFURBISHED:

Featuring innovative and environmentally-friendly equipment, elegantly designed staterooms, spacious suites with large windows, and lounge areas that open onto the outside, this new limited-capacity yacht boasting just 92 staterooms and suites will offer you a truly unique cruising experience. As the first ship in a new series, Le Bellot will embody the unique atmosphere of a subtle blend of exploration, refinement, intimacy and comfort. Aboard this ship that flies the French flag, you will experience the incomparable pleasure of an intimate cruise, with the possibility of exploring an ever-increasing range of destinations in an ethnic-chic ambiance with luxury service. Experience a luxurious setting where the accent is on authenticity and passion for travel. **RESTAURANTS** As it is an essential part of French culture, gastronomy will naturally have pride of place aboard this new ship. To the back of Deck 4, you will find a 260 m² panoramic restaurant which can accommodate all of our passengers in a single sitting. Designed differently to that on our other ships, this dining area, which opens onto the outside, will have a buffet of salads, desserts and cheeses at your disposal. Our discreet and attentive crew will provide table service for hot meals. In a relaxed atmosphere, an outdoor grill on Deck 3 will

serve grilled meats with a variety of salads and desserts. **PUBLIC AREAS** Le Bellot has many common areas that are designed and equipped to meet all of your needs while preserving the intimacy of each passenger. A 140 m² reception area includes: A reception/concierge desk, An excursions desk, The ship's administrative services, The sales office, manned by our Guest Relations Officer, Our 50 m² boutique which sells clothing, jewellery, beauty products, postcards and various accessories, Toilets accessible to passengers with reduced mobility. A new hydraulic platform with adjustable height provides: Easier boarding than on any other cruise ship, Easier Zodiac embarkation and disembarkation for expeditions, Easier access to the sea for swimming and practising various water sports such as kayaking or paddle-boarding. A pool deck offering: A pool with a panoramic view, equipped with a counter-current swimming system, A pleasant solarium, An outdoor bar and lounge with armchairs and sofas. A 200 m² main lounge which can accommodate all of our passengers to share convivial moments and to host activities organised during the day or evening. Lastly, a theatre that seats 188, equipped with: The latest sound and lighting technology, A LED wall as the stage backdrop, for the projection of high-resolution images and videos. Please click the following links to read more about Ponant and the other Ponant

The Small Cruise Ship Collection
www.small-cruise-ships.com

01432 507 280 (within UK)

info@small-cruise-ships.com | small-cruise-ships.com



The Small Cruise
Ship Collection

www.small-cruise-ships.com

small-cruise-ships.com

info@small-cruise-ships.com



cruise ships.



The Small Cruise Ship Collection

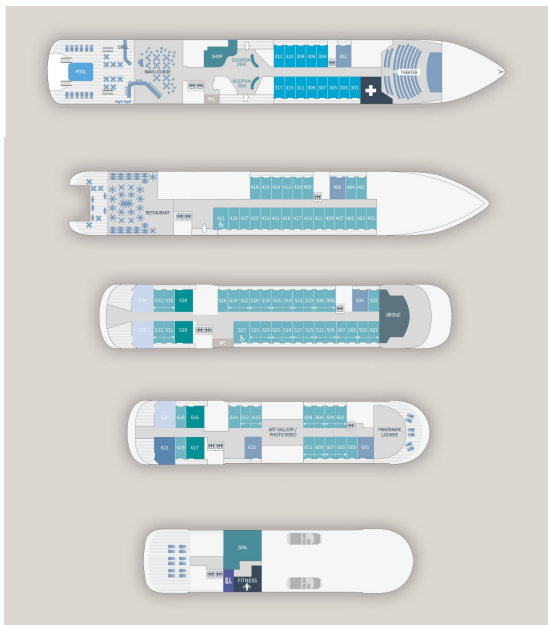
www.small-cruise-ships.com



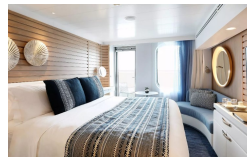
small-cruise-ships.com

info@small-cruise-ships.com

INSIDE YOUR SHIP



Deluxe Stateroom



Deluxe Suite



Grand Deluxe Suite



Owner's Suite



Prestige Deck 5 Suite

Prestige Deck 6 Suite

Prestige Stateroom Deck 4

Prestige Stateroom Deck 5

Prestige Stateroom Deck 6

Prestige Suite Deck 5

Prestige Suite Deck 6

Privilege Suite

The Small Cruise Ship Collection

www.small-cruise-ships.com

small-cruise-ships.com

info@small-cruise-ships.com

PRICING

03-Jun-2025 to 10-Jun-2025

Grand Deluxe Suite	£18390 GBP pp
Deluxe Stateroom	£6308 GBP pp
Prestige Suite Deck 5	£15096 GBP pp
Privilege Suite	£16712 GBP pp
Owner's Suite	£19349 GBP pp
Prestige Stateroom Deck 4	£7043 GBP pp
Prestige Suite Deck 6	£15901 GBP pp
Deluxe Suite	£11072 GBP pp
Prestige Stateroom Deck 6	£7848 GBP pp
Prestige Stateroom Deck 5	£7410 GBP pp

Deluxe Stateroom	£6308 GBP pp
Prestige Stateroom Deck 6	£7848 GBP pp
Prestige Stateroom Deck 5	£7410 GBP pp
Prestige Deck 6 Suite	£15901 GBP pp
Owner's Suite	£19349 GBP pp
Prestige Deck 5 Suite	£15096 GBP pp
Grand Deluxe Suite	£18390 GBP pp
Privilege Suite	£16712 GBP pp
Prestige Stateroom Deck 4	£7043 GBP pp
Deluxe Suite	£11072 GBP pp

10-Jun-2025 to 17-Jun-2025

Owner's Suite	£19349 GBP pp
Deluxe Suite	£11072 GBP pp
Privilege Suite	£16712 GBP pp
Prestige Suite Deck 6	£15901 GBP pp
Prestige Stateroom Deck 5	£7410 GBP pp
Prestige Suite Deck 5	£15096 GBP pp
Prestige Stateroom Deck 4	£7043 GBP pp
Grand Deluxe Suite	£18390 GBP pp
Deluxe Stateroom	£6308 GBP pp
Prestige Stateroom Deck 6	£7848 GBP pp

28-Jul-2025 to 04-Aug-2025



The Small Cruise Ship Collection

www.small-cruise-ships.com



small-cruise-ships.com

info@small-cruise-ships.com

PRICING

29-Jul-2025 to 05-Aug-2025

Prestige Suite Deck 5	£15096 GBP pp
Privilege Suite	£16712 GBP pp
Deluxe Suite	£11072 GBP pp
Prestige Stateroom Deck 4	£7043 GBP pp
Deluxe Stateroom	£6308 GBP pp
Prestige Stateroom Deck 6	£7848 GBP pp
Prestige Stateroom Deck 5	£7410 GBP pp
Prestige Suite Deck 6	£15901 GBP pp
Grand Deluxe Suite	£18390 GBP pp
Owner's Suite	£19349 GBP pp

04-Aug-2025 to 11-Aug-2025

Grand Deluxe Suite	£18390 GBP pp
Prestige Stateroom Deck 4	£7043 GBP pp
Prestige Stateroom Deck 6	£7848 GBP pp
Prestige Stateroom Deck 5	£7410 GBP pp
Deluxe Stateroom	£6308 GBP pp
Prestige Deck 5 Suite	£15096 GBP pp
Privilege Suite	£16712 GBP pp
Owner's Suite	£19349 GBP pp
Prestige Deck 6 Suite	£15901 GBP pp
Deluxe Suite	£11072 GBP pp

ADDITIONAL CHARGES: Port Charges. From 520 AUD pp