

The Small Cruise Ship Collection

www.small-cruise-ships.com

small-cruise-ships.com

info@small-cruise-ships.com

HORIZONS OF EAST ASIA AND THE PHILIPPINES LUXURY CRUISE

Embark on a journey to the heart of East Asia, where ancient cultures and contrasting landscapes create a fascinating mosaic. In China, Shanghai reveals a vibrant character, combining historical heritage and bold modernity. In Naha, in Japan's Okinawa islands, Japanese traditions, a UNESCO-listed historic site and tropical shores create a subtle balance, while in Taiwan, the island's identity is shaped by multiple influences, amid temples, mountains, lively cities and picturesque villages. Next, the Philippines reveal the full diversity of the journey: verdant hills and stone villages in Batanes, authentic scenes of daily life in Claveria, and emerald waters dotted with islets in Hundred Islands National Park. Here, remote lands, living traditions, welcoming communities and unspoiled landscapes combine to create a journey of remarkable intensity.



ITINERARY

Day 1 - Busan

With around four million inhabitants, **Busan** is the second largest metropolis on South Korea, after Seoul. This dynamic harbour city, located in the south-east, surrounded by the warm waters of the Sea of Japan, benefits from a mild, pleasant climate. You'll find delightful simply to stroll around the **lively streets** and explore the city's outstanding cultural heritage of art galleries, museums, and Buddhist sites, such as the **Haedong Yonggungsa temple**, which elegantly sits on the waterfront. Rich too in magnificent beaches and superlative natural landscapes, Busan's peaceful atmosphere will win you over, as will its inhabitants, whom you'll have the pleasure of

The Small Cruise Ship Collection

www.small-cruise-ships.com

01432 507 280 (within UK)

info@small-cruise-ships.com | small-cruise-ships.com



The Small Cruise Ship Collection

www.small-cruise-ships.com

small-cruise-ships.com

info@small-cruise-ships.com

meeting.

Day 2 - At sea

During your journey at sea, make the most of the many services and activities on board. Treat yourself to a moment of relaxation in the spa or stay in shape in the fitness centre. Depending on the season, let yourself be tempted by the swimming pool or a spot of sunbathing. This journey without a port of call will also be an opportunity to enjoy the conferences or shows proposed on board, depending on the activities offered, or to do some shopping in the boutique or to meet the PONANT photographers in their dedicated space. As for lovers of the open sea, they will be able to visit the ship's upper deck to admire the spectacle of the waves and perhaps be lucky enough to observe marine species. A truly enchanted interlude, combining comfort, rest and entertainment.

Day 3 - Shanghai

Set in the most amazing geographic location, **Shanghai** has fast become the largest economic and commercial hub in **China**. Although this futuristic megalopolis is the capital of excess, it still has soul. See for yourself as you stroll around the Bund district, emblematic of old Shanghai. From here, you can reach **People's Square**, a must-see vast and luminous space bordered by historical monuments. In the former French concession, you'll be able to appreciate the charm of the most Westernised of Chinese cities: a haven of peace in the heart of an urban jungle!

Day 4 - Shanghai

Set in the most amazing geographic location, **Shanghai** has fast become the largest economic and commercial hub in **China**. Although this futuristic megalopolis is the capital

of excess, it still has soul. See for yourself as you stroll around the Bund district, emblematic of old Shanghai. From here, you can reach **People's Square**, a must-see vast and luminous space bordered by historical monuments. In the former French concession, you'll be able to appreciate the charm of the most Westernised of Chinese cities: a haven of peace in the heart of an urban jungle!

Day 5 - At sea

During your journey at sea, make the most of the many services and activities on board. Treat yourself to a moment of relaxation in the spa or stay in shape in the fitness centre. Depending on the season, let yourself be tempted by the swimming pool or a spot of sunbathing. This journey without a port of call will also be an opportunity to enjoy the conferences or shows proposed on board, depending on the activities offered, or to do some shopping in the boutique or to meet the PONANT photographers in their dedicated space. As for lovers of the open sea, they will be able to visit the ship's upper deck to admire the spectacle of the waves and perhaps be lucky enough to observe marine species. A truly enchanted interlude, combining comfort, rest and entertainment.

Day 6 - Naha, Okinawa

Capital of Okinawa Prefecture, the town of **Naha** is located on the south-west of the island. You will love its lively atmosphere, particularly along **Kokusai Dori**, otherwise known as 'international street'. The picturesque **Makishi Public Market**, nicknamed 'Naha's kitchen' offers a profusion of colourful fish, Okinawan foodstuffs and local spices and you can sample delicacies cooked on the spot.

Day 7 - Miyakojima

The Small Cruise Ship Collection

www.small-cruise-ships.com

01432 507 280 (within UK)

info@small-cruise-ships.com | small-cruise-ships.com



The Small Cruise Ship Collection

www.small-cruise-ships.com

small-cruise-ships.com

info@small-cruise-ships.com

Situated between the East China Sea and the Philippine Sea, **Miyakojima** is the main island of the Miyako Islands, in the **Sakishima archipelago**. The fourth largest island in the Okinawa prefecture, it is known for its many sugar cane plantations and some of Japan's most beautiful beaches.

Day 8 - Keelung (Chilung)

On the north-east tip of **Taiwan**, the harbour city of **Keelung** stands on one of the most beautiful coasts on the island. Nearby is the spectacular natural park of **Yehliu**, famed for its striking rock formations. It's easy to tour the city's historical sites on trails that cross the lush green hills surrounding the harbour from Chung Cheng Park to Fort Ershawan, you can enjoy superb views of Keelung and the coastline. But the main attraction is the **Miaokou night market**, where you can taste some typically Taiwanese culinary delights.

Day 9 - Kaohsiung City

Day 10 - Batanes

In the **north of the Philippines**, the unspoilt Batanes archipelago reveals landscapes of striking beauty, with **wind-beaten cliffs** and **verdant hills**. From Basco, the province's emblematic lighthouse, **roads lined with flowers** lead to the villages of the Ivatan people, whose stone houses are designed to withstand typhoons. This **remote and peaceful** archipelago offers an atmosphere where nature is ever-present, shaping a unique and still little-known part of the world.

Day 11 - Claveria

Located in the charming municipality of Claveria in Cagayan, Claveria Beach is a **hidden jewel** offering visitors a real coastal experience. It is characterised by its natural beauty, and its inhabitants live on **fishing** and **farming**, mainly rice. You will be able to watch the fishermen return with their catch and discover the **local traditions** of this community, which is home to 32,000 inhabitants. A genuinely lush destination, the scenic route to Sentinella Hill affords **stunning views over the mountains and the coast**. In the heart of the Santa Maria Chapel, children playing guitar and **dancers** will set the rhythm of this tranquil escape. Featuring relaxation and a change of scenery, the port of call in Claveria promises to be idyllic.

Day 12 - Hundred Islands National Park

A protected area created in 1940, the **Hundred Islands National Park** is a designated natural site that brings together **124 beautiful tropical islands and islets**, scattered across the crystal-clear waters of the Lingayen Gulf. It is an iconic attraction in the Philippines, offering visitors charming **white sandy beaches**, abundant vegetation and **marine life**. This preserved site also has limestone cliffs and **coral reefs**, making it a veritable corner of paradise for nature fans.

Day 13 - Manila

On first sight, the Philippines' capital shows its highly Americanised Asian megalopolis side, with ultramodern skyscrapers set all along the waterfront. But when you stroll through the cobbled streets of the **Intramuros** district, you'll discover a different side of **Manila**, one that's full of old-world charm. An enchanted pause in the middle of urban bustle, Rizal Park's 60 hectares of magnificent green parkland is perfect for recharging your batteries. To see the city from a

The Small Cruise Ship Collection
www.small-cruise-ships.com

01432 507 280 (within UK)

info@small-cruise-ships.com | small-cruise-ships.com



The Small Cruise Ship Collection

www.small-cruise-ships.com

small-cruise-ships.com

info@small-cruise-ships.com

different angle, take a walk along Roxas boulevard, a popular seaside promenade.

Please note:

Itineraries are subject to change.



The Small Cruise Ship Collection

www.small-cruise-ships.com

01432 507 280 (within UK)

info@small-cruise-ships.com | small-cruise-ships.com



The Small Cruise Ship Collection

www.small-cruise-ships.com

small-cruise-ships.com

info@small-cruise-ships.com

YOUR SHIP: LE JACQUES CARTIER

YOUR SHIP: Le Jacques Cartier

VESSEL TYPE:

LENGTH:

PASSENGER CAPACITY:

BUILT/REFURBISHED:

Featuring innovative and environmentally-friendly equipment, elegantly designed staterooms, spacious suites with large windows, and lounge areas that open onto the outside, this new limited-capacity yacht boasting just 92 staterooms and suites will offer you a truly unique cruising experience. Le Jacques Cartier will embody refinement, intimacy and comfort. Aboard this ship that flies the French flag, you will experience the incomparable pleasure of an intimate cruise, with the possibility of exploring an ever-increasing range of destinations in an ethnic-chic ambiance with luxury service. Experience a luxurious setting where the accent is on authenticity and passion for travel. RESTAURANTS As it is an essential part of French culture, gastronomy will naturally have pride of place aboard this new ship. To the back of Deck 4, you will find a 260 m² panoramic restaurant which can accommodate all of our passengers in a single sitting. Designed differently to that on our other ships, this dining area, which opens onto the outside, will have a buffet of salads, desserts and cheeses at your disposal. Our discreet and attentive crew will provide table service for hot meals. In a relaxed atmosphere, an outdoor grill on Deck 3 will serve grilled meats with a variety of salads and desserts. PUBLIC AREAS Le

Jacques Cartier has many common areas that are designed and equipped to meet all of your needs while preserving the intimacy of each passenger. A 140 m² reception area includes: A reception/concierge desk, An excursions desk, The ship's administrative services, The sales office, manned by our Guest Relations Officer, Our 50 m² boutique which sells clothing, jewellery, beauty products, postcards and various accessories, Toilets accessible to passengers with reduced mobility. A new hydraulic platform with adjustable height provides: Easier boarding than on any other cruise ship, Easier Zodiac embarkation and disembarkation for expeditions, Easier access to the sea for swimming and practising various water sports such as kayaking or paddle-boarding. A pool deck offering: A pool with a panoramic view, equipped with a counter-current swimming system, A pleasant solarium, An outdoor bar and lounge with armchairs and sofas. A 200 m² main lounge which can accommodate all of our passengers to share convivial moments and to host activities organised during the day or evening. Lastly, a theatre that seats 188, equipped with: The latest sound and lighting technology, A LED wall as the stage backdrop, for the projection of high-resolution images and videos. Please click the following links to read more about Ponant and the other Ponant

The Small Cruise Ship Collection

www.small-cruise-ships.com

01432 507 280 (within UK)

info@small-cruise-ships.com | small-cruise-ships.com



The Small Cruise Ship Collection

www.small-cruise-ships.com

small-cruise-ships.com

info@small-cruise-ships.com



cruise ships.

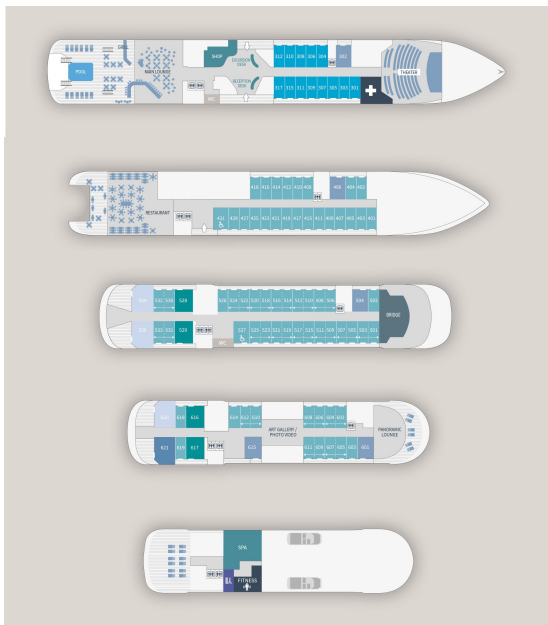
The Small Cruise Ship Collection

www.small-cruise-ships.com

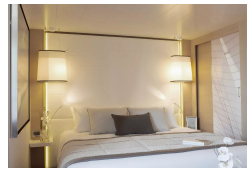
small-cruise-ships.com

info@small-cruise-ships.com

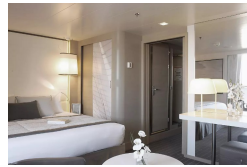
INSIDE YOUR SHIP



Deluxe Stateroom

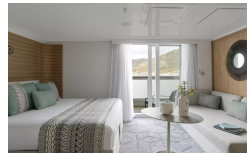


Deluxe Suite



Deluxe Suite Deck 3

Deluxe Suite Deck 4



Deluxe Suite Deck 5

Deluxe Suite Deck 6

Grand Deluxe Suite

Owner's Suite

Prestige Stateroom Deck 4

Prestige Stateroom Deck 5

Prestige Stateroom Deck 6

Prestige Suite Deck 5

Prestige Suite Deck 6

Privilege Suite Deck 5

Privilege Suite Deck 6

Superior Stateroom



The Small Cruise Ship Collection

www.small-cruise-ships.com

small-cruise-ships.com

info@small-cruise-ships.com

PRICING

23-Oct-2027 to 05-Nov-2027

Deluxe Stateroom	£6825 GBP pp
Superior Stateroom	£6305 GBP pp
Owner's Suite	£27015 GBP pp
Prestige Suite Deck 6	£16595 GBP pp
Prestige Suite Deck 5	£15765 GBP pp
Prestige Stateroom Deck 6	£8385 GBP pp
Prestige Stateroom Deck 5	£7945 GBP pp
Prestige Stateroom Deck 4	£7575 GBP pp
Deluxe Suite	£11665 GBP pp

20-May-2028 to 01-Jun-2028

Deluxe Stateroom	£6305 GBP pp
Superior Stateroom	£5825 GBP pp
Owner's Suite	£24935 GBP pp
Prestige Suite Deck 6	£15315 GBP pp
Prestige Suite Deck 5	£14555 GBP pp
Prestige Stateroom Deck 6	£7745 GBP pp
Prestige Stateroom Deck 5	£7335 GBP pp
Prestige Stateroom Deck 4	£6995 GBP pp
Deluxe Suite	£10775 GBP pp

16-Apr-2028 to 28-Apr-2028

Deluxe Suite Deck 5	£10015 GBP pp
Deluxe Suite Deck 3	£10015 GBP pp
Deluxe Stateroom	£6645 GBP pp
Prestige Stateroom Deck 5	£7205 GBP pp
Prestige Stateroom Deck 4	£6995 GBP pp
Grand Deluxe Suite	£11735 GBP pp
Deluxe Suite Deck 6	£10015 GBP pp
Owner's Suite	£17075 GBP pp
Prestige Stateroom Deck 6	£7475 GBP pp
Privilege Suite Deck 5	£11395 GBP pp
Deluxe Suite Deck 4	£10015 GBP pp
Privilege Suite Deck 6	£11395 GBP pp
Prestige Suite Deck 6	£11125 GBP pp
Prestige Suite Deck 5	£10775 GBP pp