

The Small Cruise Ship Collection

www.small-cruise-ships.com

small-cruise-ships.com

info@small-cruise-ships.com

HOMAGE TO ROSTROPOVITCH, THE CELLIST OF THE CENTURY LUXURY CRUISE

Under the Atlantic sun, embark on a musical journey into the heart of the volcanic archipelagos of the Canaries and Cape Verde, a blend of untamed nature and exceptional cultural heritage, accompanied by the melodies of the legendary cellist Mstislav Rostropovitch. In partnership with Radio Classique, this cruise will provide an opportunity to discover these volcanic lands, which are home to contrasting, breathtaking panoramas and unspoilt national parks that invite exploration. From vibrant Lanzarote to enchanting Praia, each port of call will immerse you in the unique atmosphere of the island's towns, where colourful markets mingle with colonial architectural treasures, revealing a fascinating history of European and African influences.



ITINERARY

Day 1 - Las Palmas de Gran Canaria, Canary Islands

A stopover of sunny climes, Las Palmas is located on the north-east coast of Gran Canaria. A few streets away from Puerto de la Luz port, you'll discover the vast Las Canteras beach, bordered with the town's characteristic palms. You'll find these palms are all over Las Palmas, in the streets and squares, especially on the ****plaza de Santa Ana**** in the heart of the historical district. It feels like you've travelled back in time here, as you stand looking at the tall houses beside the Santa Ana cathedral. Very close by, you can visit the ****Casa de Col on,****

The Small Cruise Ship Collection
www.small-cruise-ships.com

01432 507 280 (within UK)

info@small-cruise-ships.com | small-cruise-ships.com



The Small Cruise Ship Collection

www.small-cruise-ships.com

small-cruise-ships.com

info@small-cruise-ships.com

a museum dedicated to the famous explorer. The museum is housed in the palace belonging to the island's former governor. Chances are, you'll be drawn to the covered Vegueta market to partake in some daily life along with the locals and taste some unfamiliar dishes.

Day 2 - Santa Cruz de Tenerife, Canary Islands

The capital city of Tenerife is located on the north-east coast of the island. Close to the port is the monumental **Plaza de España**, bedecked with a fountain and plant sculptures. Around the plaza, you can admire the white marble Triunfo de la Candelaria obelisk, the historic casino of Santa Cruz and the majestic Guimera theatre. Not far from here, the picturesque **Iglesia de la Concepción** church features the characteristic traits of Canaries architecture.

Day 3 - Arrecife de Lanzarote, Canary Islands

Established on a coast sprinkled with cliffs, **Arrecife** has a pleasant beach and a lagoon full of charm, **Charca of San Ginés**, where the fishermen anchor their boats. The city also proposes places fed by history and culture, such as the **castle San Gabriel**, former fort of defense of the city.

Day 4 - Santa Cruz de La Palma, Canary Islands

The capital of the island of Palma, **Santa Cruz de la Palma** is the pearl of the Canaries. Founded in 1493 by the conquistador Alonso Fernandez de Lugo, the city has preserved a large and atypical architectural heritage from its colonial past, with its traditional Canarian houses adorned with brightly coloured wooden balconies, its cobbled streets, its sumptuous palaces and its numerous religious buildings. The **Santa Catalina Castle** is the symbol of the city. This 16th century military fortification helped defend the city from repeated

attacks by French privateers.

Day 5 - La Estaca, Canary Islands

With its particularly pleasant climate, El Hierro, the youngest of the Canary Islands, invites you to discover enchanting panoramas in an atmosphere of unrivalled calm and serenity. You will be captivated by the untouched natural environment, featuring a **majestic volcano**, lush forests, sheer cliffs and natural pools. Besides the treasures on land, you will also have the chance to discover its underwater environment. Teeming with life, it is a paradise for diving enthusiasts, since the island is home to the Punta de La Restinga Marine Reserve, its thousands of colourful fish and stunning underwater volcanic landscapes.

Days 6 - 7 At sea

During your journey at sea, make the most of the many services and activities on board. Treat yourself to a moment of relaxation in the spa or stay in shape in the fitness centre. Depending on the season, let yourself be tempted by the swimming pool or a spot of sunbathing. This journey without a port of call will also be an opportunity to enjoy the conferences or shows proposed on board, depending on the activities offered, or to do some shopping in the boutique or to meet the PONANT photographers in their dedicated space. As for lovers of the open sea, they will be able to visit the ship's upper deck to admire the spectacle of the waves and perhaps be lucky enough to observe marine species. A truly enchanted interlude, combining comfort, rest and entertainment.

Day 8 - Mindelo

Set on the shores of the Porto Grande bay on the north-west coast of Sao Vicente, Mindelo is considered to be Cape Verde's

The Small Cruise Ship Collection

www.small-cruise-ships.com

01432 507 280 (within UK)

info@small-cruise-ships.com | small-cruise-ships.com



The Small Cruise Ship Collection

www.small-cruise-ships.com

small-cruise-ships.com

info@small-cruise-ships.com

cultural capital. Here in singer Cesaria Evora's homeland, you can listen to real **morna** in the bars of the old town, where you can also sip the local **grog**, a Cape Verdian sugarcane spirit. A few streets from the elegant floating resort of Pont d'agua you'll see the pastel-coloured houses and **colonial buildings of the historical district**. Other landmarks are the facades of the old Governor's Palace and the busy municipal market.

Day 9 - Praia

The capital of Cape Verde, Praia, is located on the southern tip of Santiago island. You can dally in the districts planted with Tamarind and Albizia trees. Above the harbour, the **statue of Diogo Gomes** pays homage to the man who discovered Cape Verde in 1460. A few streets away, in the old centre, the **Ethnographic Museum** presents the diversity of the archipelago's cultural origins. Its historical building with transom windows is one of the city's more unusual curiosities.

Day 10 - At sea

During your journey at sea, make the most of the many services and activities on board. Treat yourself to a moment of relaxation in the spa or stay in shape in the fitness centre. Depending on the season, let yourself be tempted by the swimming pool or a spot of sunbathing. This journey without a port of call will also be an opportunity to enjoy the conferences or shows proposed on board, depending on the activities offered, or to do some shopping in the boutique or to meet the PONANT photographers in their dedicated space. As for lovers of the open sea, they will be able to visit the ship's upper deck to admire the spectacle of the waves and perhaps be lucky enough to observe marine species. A truly enchanted interlude, combining comfort, rest and entertainment.

Day 11 - Dakar

On the tip of the African continent, the buzzing capital of **Senegal** stretches along the narrow **peninsula of Cape Verde**. You may be overwhelmed by its sheer size, but **Dakar** will win you over with its richly diverse districts, appealing cultural scene and rich natural surroundings. In the historic centre, you'll enjoy the pell-mell of colours and tasty delights in **Kermel market**. Far from the effervescence of the city, **Gor ee Island**, a **UNESCO** World Heritage Site, is known as a place of remembrance, having once been a slave trade outpost. On the other side of the plateau, the wild Madeleine islands are protected by a national park.

Please note:

Itineraries are subject to change.

The Small Cruise Ship Collection
www.small-cruise-ships.com

01432 507 280 (within UK)

info@small-cruise-ships.com | small-cruise-ships.com



The Small Cruise Ship Collection

www.small-cruise-ships.com

small-cruise-ships.com

info@small-cruise-ships.com

YOUR SHIP: LE DUMONT D'URVILLE

YOUR SHIP: Le Dumont d'Urville

VESSEL TYPE:

LENGTH:

PASSENGER CAPACITY:

BUILT/REFURBISHED:

Featuring innovative and environmentally-friendly equipment, elegantly designed staterooms, spacious suites with large windows, and lounge areas that open onto the outside, this new limited-capacity yacht boasting just 92 staterooms and suites will offer you a truly unique cruising experience. As the first ship in a new series that remains true to the Ponant spirit, Le Dumont d'Urville will embody the unique atmosphere that is the cruise line's hallmark: a subtle blend of refinement, intimacy and comfort. Aboard this ship that flies the French flag, you will experience the incomparable pleasure of an intimate cruise, with the possibility of exploring an ever-increasing range of destinations in an ethnic-chic ambiance with luxury service. Experience a luxurious setting where the accent is on authenticity and passion for travel. **RESTAURANTS** As it is an essential part of French culture, gastronomy will naturally have pride of place aboard this new ship. Through its two restaurants, Le Dumont d'Urville will invite you on a journey to elegance and epicureanism. In a relaxed atmosphere, a first dining area located on Deck 3 and able to seat 70 will serve grilled meats daily, along with a variety of salads and desserts. To the back of Deck 4, you will find a 260 m² panoramic restaurant which can

accommodate all of our passengers in a single sitting. Designed differently to that on our other ships, this dining area, which opens onto the outside, will have a buffet of salads, desserts and cheeses at your disposal. Our discreet and attentive crew will provide table service for hot meals. **PUBLIC AREAS** Like Le Boreal and its sisterships, Le Dumont d'Urville has many common areas that are designed and equipped to meet all of your needs while preserving the intimacy of each passenger. A 140 m² reception area includes: A reception/concierge desk, An excursions desk, The ship's administrative services, The sales office, manned by our Guest Relations Officer, Our 50 m² boutique which sells clothing, jewellery, beauty products, postcards and various accessories, Toilets accessible to passengers with reduced mobility. A new hydraulic platform with adjustable height provides: Easier boarding than on any other cruise ship, Easier Zodiac embarkation and disembarkation for expeditions, Easier access to the sea for swimming and practising various water sports such as kayaking or paddle-boarding. A pool deck offering: A pool with a panoramic view, equipped with a counter-current swimming system, A pleasant solarium, An outdoor bar and lounge with armchairs and sofas. A 200 m² main lounge which can accommodate all of our passengers to share convivial moments and to host activities organised during the day or evening. Lastly, a theatre that seats 188, equipped with: The latest sound and lighting technology, A LED wall as the stage backdrop, for the projection of high-resolution images and videos. Please click the following links to read more about Ponant and the other Ponant

The Small Cruise Ship Collection

www.small-cruise-ships.com

01432 507 280 (within UK)

info@small-cruise-ships.com | small-cruise-ships.com



The Small Cruise Ship Collection

www.small-cruise-ships.com



small-cruise-ships.com

info@small-cruise-ships.com



cruise ships.



The Small Cruise Ship Collection

www.small-cruise-ships.com

01432 507 280 (within UK)

info@small-cruise-ships.com | small-cruise-ships.com

The Small Cruise Ship Collection

www.small-cruise-ships.com

small-cruise-ships.com

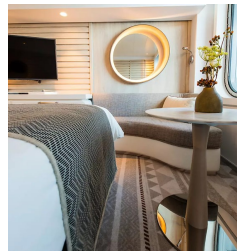
info@small-cruise-ships.com

INSIDE YOUR SHIP

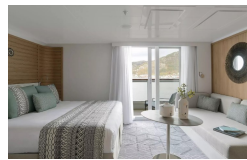


- Owner's Suite Deck 6
- Privilege Suites Deck 5-6
- Grand Deluxe Suites Deck 5-6
- Prestige Suites Deck 5-6
- Deluxe Suites Deck 5-6
- Prestige Cabins Deck 4-5-6
- Deluxe Cabins Deck 3

Deluxe Stateroom

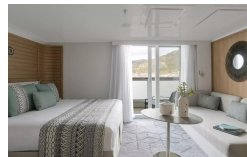


Deluxe Suite Deck 3



Deluxe Suite Deck 4

Deluxe Suite Deck 5



Deluxe Suite Deck 6

Grand Deluxe Suite

Owner's Suite

Prestige Stateroom Deck 4

Prestige Stateroom Deck 5

Prestige Stateroom Deck 6

Prestige Suite Deck 5

Prestige Suite Deck 6

Privilege Suite Deck 5

Privilege Suite Deck 6



The Small Cruise Ship Collection

www.small-cruise-ships.com

small-cruise-ships.com

info@small-cruise-ships.com

PRICING

25-Nov-2027 to 05-Dec-2027

Owner's Suite	£10735 GBP pp
Prestige Stateroom Deck 5	£4545 GBP pp
Prestige Suite Deck 6	£7015 GBP pp
Prestige Stateroom Deck 6	£4725 GBP pp
Prestige Stateroom Deck 4	£4415 GBP pp
Grand Deluxe Suite	£7405 GBP pp
Deluxe Suite Deck 5	£6325 GBP pp
Deluxe Suite Deck 4	£6325 GBP pp
Deluxe Stateroom	£4195 GBP pp
Prestige Suite Deck 5	£6795 GBP pp
Privilege Suite Deck 5	£7195 GBP pp
Privilege Suite Deck 6	£7195 GBP pp
Deluxe Suite Deck 3	£6325 GBP pp
Deluxe Suite Deck 6	£6325 GBP pp