

## The Small Cruise Ship Collection

[www.small-cruise-ships.com](http://www.small-cruise-ships.com)

[small-cruise-ships.com](http://small-cruise-ships.com)

[info@small-cruise-ships.com](mailto:info@small-cruise-ships.com)

### HOLIDAYS IN ANTARCTICA (SEA SPIRIT)

"Glittering white, shining blue, raven black, in the light of the sun the land looks like a fairy-tale." Roald Amundsen This expedition offers the essential experiences of the wildest and most fantastic place on Earth. The cruise begins in the city of Ushuaia – the southernmost city in the world. Next, we cross the Drake Passage on your way to the South Shetland Islands and the Antarctic Peninsula. On the return journey, you will have the opportunity to catch everything you missed the first time around. This is expedition cruising at its most authentic. Our route and exploration opportunities in Antarctica are heavily dependent on weather and ice conditions. Our experienced captain and expedition leader decide the itinerary and continually adjust plans as conditions and opportunities warrant. We take advantage of long daylight hours to exploit every opportunity to experience excellent wildlife viewing, amazing scenery, and excursions via Zodiac. The Antarctic Peninsula region contains some of the world's most impressive scenery and some of Antarctica's best wildlife viewing opportunities. Protected bays and narrow channels are surrounded by towering mountain peaks covered in permanent snow and immense glaciers. Icebergs of every size and description complete an image of incomparable beauty. Waters rich with krill are home to a variety of whale and seal species. The whole area is alive with penguins foraging at sea and forming large nesting colonies at special places on land. The area is also home to Antarctic research stations of various nationalities. Some stations have a gift shop and post office. Please Note: some departures may be a day shorter or longer, please contact us for more details.



#### ITINERARY

Day 1: Arrival in Ushuaia, Argentina (hotel night)

Welcome to Ushuaia, the world's southernmost city and starting point of our Antarctic expedition! Upon your arrival at the airport, you will be greeted by our staff and transferred to a quality hotel, which has been arranged by us and is included in the price of the itinerary. For the rest of the day, you are free to explore this vibrant port city and adventure hub. For an introduction to local history and wildlife, the interesting Museo del Fin del Mundo is worth a visit. If you have time to spare, a variety of nature activities can be arranged to suit all interests and fitness levels, from hiking in nearby Tierra del Fuego National Park to wildlife viewing in the Beagle Channel. For dinner, Ushuaia offers a wide range of restaurants featuring

The Small Cruise Ship Collection  
[www.small-cruise-ships.com](http://www.small-cruise-ships.com)

01432 507 280 (within UK)

[info@small-cruise-ships.com](mailto:info@small-cruise-ships.com) | [small-cruise-ships.com](http://small-cruise-ships.com)



Patagonian lamb and delectable Fuegian seafood.

#### Day 2: Welcome Aboard!

After breakfast at your hotel, the morning is yours to enjoy Ushuaia. Explore the delightful waterfront and savor views of the snowcapped Martial Range, the southernmost peaks of the Andes. Take advantage of shopping for souvenirs or some last-minute necessities such as cold-weather gear. Just remember, you will soon receive your very own parka to keep and waterproof boots to borrow on board the ship. For lunch, the many cafés, parrillas and gelato shops on Avenida San Martín will be sure to satisfy any appetite. In the afternoon, you will be transferred to the pier where we will warmly welcome you aboard the luxury expedition vessel M/V Sea Spirit. Get settled in your spacious suite and explore the ship that will be your comfortable home during the extraordinary adventure to come. After getting underway, a full schedule of events kicks off with informative briefings and introductions from your expedition staff. After the first of many delicious dinners on board, step out onto the open decks to admire the scenery and gorgeous evening light as we pass through the Beagle Channel.

#### Day 3-4: Across the Drake Passage

After passing the islands of Tierra del Fuego, we turn south to begin our crossing of the Drake Passage. We watch for humpback and fin whales along the way. The majestic wandering albatross and other graceful subantarctic seabirds are common in these waters and can readily be viewed from panoramic open decks and balconies. We also cross the Antarctic Convergence, the biological boundary of the Southern Ocean. The ship's stabilizing fins provide comfort in the event of rough seas. Briefings, bio-security procedures and presentations by our lecture staff prepare you for our arrival in Antarctica. We

hope to arrive in the South Shetland Islands on the evening of our second day at sea.

#### Day 5-7: South Shetland Islands and Antarctic Peninsula

During the next four days, we explore the highlights of the South Shetland Islands and the Antarctic Peninsula. This region contains some of the world's most impressive scenery and the best wildlife viewing in Antarctica. Sheltered bays and channels sparkle with ice and reflect towering mountain peaks coated in permanent snow and immense glaciers. Icebergs of every size and description complete an image of incomparable beauty. Waters rich with krill are home to huge numbers of marine mammals and seabirds. The whole area is alive with penguins foraging at sea and forming large rookeries at special places on land. Here we also find Antarctic research bases of various nationalities, some with gift shops and post offices. The South Shetland Islands are the northernmost islands in Antarctica and will likely be our first area of exploration. This wildly beautiful island chain contains many landing sites with historical significance and abundant wildlife. We will also explore the supremely picturesque Gerlache Strait area of the Antarctic Peninsula, a pristine wilderness of spectacular white landscapes, colossal icebergs, obliging marine mammals and bustling penguin colonies. We hope to pass through the famous Lemaire Channel, also known as "Kodak Gap" because of the photogenic way the narrow channel reflects the image of sheer snowy mountains. Throughout the islands and on the mainland, we find nesting colonies of gentoo, chinstrap and Adélie penguins, sometimes side by side. At this time, penguin eggs are just starting to hatch, causing parents to rush to the sea and back to gather krill for their tiny, helpless chicks. Predatory skuas are quick to capitalize on this new food source. As sea ice





continues to recede, humpback whales arrive in great numbers and begin non-stop feeding. Killer whales are also on the hunt for seals and minke whales. Groups of crabeater seals occupy the last of the ice floes while Weddell seals haul out on land. Solitary leopard seals can be spotted patrolling the coast near penguin colonies. In this rugged yet accessible environment, superb wildlife viewing is best complemented by active adventure. Our knowledgeable guides will offer hiking and hill climbing for an even greater perspective of this raw polar wilderness. For sea kayakers, the wildlife-rich waters of Antarctica offer many chances to paddle with seals and penguins in some of the world's most scenic waterways. With long daylight hours and the summer's warmest temperatures, camping is also a great way to make the most of your time on the White Continent. This is expedition cruising at its most authentic. Our precise route and exploration opportunities will be shaped by weather and ice. Our experienced captain and expedition leader will continually adjust plans to take maximum advantage of the conditions in this challenging polar environment. With nearly 22 hours of daylight per day, we seize every opportunity to experience excellent wildlife viewing and amazing scenery on shore excursions and Zodiac cruises.

#### Day 8: Christmas in Antarctica

Christmas falls on our last day in Antarctica. We celebrate the day with special meals and yuletide festivities in the various traditions of our multinational passengers. Santa Claus will make an appearance and you can have your photo taken with him in the snow. We encourage you to dress in festive attire for an evening of holiday music, singing and dancing. You will always remember your Christmas in Antarctica!

#### Day 9-10: Back across the Drake Passage

It is now time to head back across the Drake Passage toward South America, but the adventure is not quite over. Seabirds are our constant companions and there is always the possibility of whale encounters in these wild waters. This is also the time for festivities such as the Captain's Farewell Cocktail and the end-of-voyage slideshow. Finally, as we enter the calm Beagle Channel, we enjoy a night of smooth sailing toward Ushuaia.

#### Day 11: Disembarkation in Ushuaia, Argentina

After yet another delicious breakfast on board, we bid you a fond farewell in Ushuaia. We provide a group transfer to the airport or to the city center if you wish to spend more time here. As you look back on your wonderful experience in Antarctica, you may already be looking forward to your next polar adventure!

#### Please Note:

Itineraries are subject to change.



## The Small Cruise Ship Collection

[www.small-cruise-ships.com](http://www.small-cruise-ships.com)

[small-cruise-ships.com](http://small-cruise-ships.com)

[info@small-cruise-ships.com](mailto:info@small-cruise-ships.com)

### YOUR SHIP: SEA SPIRIT

**YOUR SHIP:**

**Sea Spirit**

**VESSEL TYPE:**

**LENGTH:**

**PASSENGER CAPACITY:**

**BUILT/REFURBISHED:**

Sea Spirit is a luxury expedition cruise ship, specifically designed to cruise the Polar regions. Carrying a maximum of just 114 passengers in 57 suites, she has the feel of a boutique hotel. Built in 1992, but refurbished several times since, the latest being in 2019, she is just 90 metres long so can navigate the small channels and bays of the Polar regions. Sailing aboard the remarkably comfortable Sea Spirit you will experience the polar regions in grand style with spacious suites. Sea Spirit's spacious suites all have panoramic oceans views. Think king-size or twin beds, en suites, flat screen TVs and DVDs and internet satellite. Many suites have private balconies, lounge areas & dressing tables. There is a lounge, bistro and bar, hot tub, gym, a state-of-the-art presentation room and stabilisers for smooth cruising. There is an open bridge policy so you can join the captain and the officers at any time of day to watch the ship's operations or just check your exact location. Features All-suite ship Smallest suite is a spacious 215 square feet. 15 suites have balconies. Owner's Suite is an outstanding 550 sq. feet. Flat Screen TVs and DVD players in every suite Gymnasium and Hot Tub with seating area and Bistro Library/Games Room Tea & Coffee Station(24 hrs) Elevator Every suite has an exterior

view Some cabin plans may vary depending on the cruise, please check for details. Zodiac dockSuperior Suite Owners



Suite Library



The Small Cruise Ship Collection

[www.small-cruise-ships.com](http://www.small-cruise-ships.com)

**01432 507 280** (within UK)

[info@small-cruise-ships.com](mailto:info@small-cruise-ships.com) | [small-cruise-ships.com](http://small-cruise-ships.com)



# The Small Cruise Ship Collection

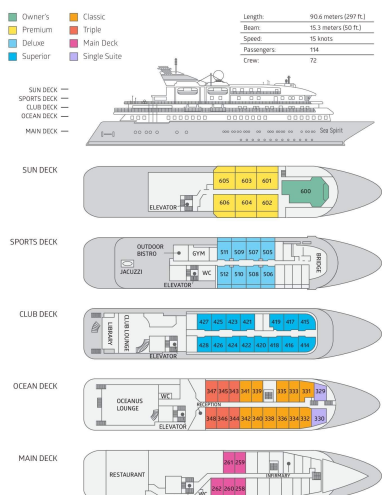
www.small-cruise-ships.com

small-cruise-ships.com

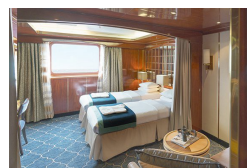
info@small-cruise-ships.com

## INSIDE YOUR SHIP

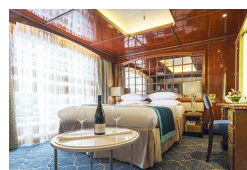
### DECK PLAN M/V SEA SPIRIT



Classic Suite



Deluxe Suite



Main Deck Suite



Owner's Suite



Premium Suite

Superior Suite



# The Small Cruise Ship Collection

[www.small-cruise-ships.com](http://www.small-cruise-ships.com)



[small-cruise-ships.com](http://small-cruise-ships.com)

[info@small-cruise-ships.com](mailto:info@small-cruise-ships.com)

## PRICING

### 17-Dec-2025 to 27-Dec-2025

Premium Suite	£14226 GBP pp
Superior Suite	£11880 GBP pp
Deluxe Suite	£13206 GBP pp
Triple Classic	£8208 GBP pp
Main Deck Suite	£10860 GBP pp
Owner's Suite	£17949 GBP pp
Classic Suite	£11676 GBP pp

### 28-Dec-2026 to 07-Jan-2027

Deluxe Suite	£15505 GBP pp
Triple Classic	£9689 GBP pp
Classic Suite	£13719 GBP pp
Superior Suite	£13975 GBP pp
Owner's Suite	£21065 GBP pp
Main Deck Suite	£12799 GBP pp
Premium Suite	£16675 GBP pp

### 18-Dec-2026 to 28-Dec-2026

Deluxe Suite	£14789 GBP pp
Main Deck Suite	£12239 GBP pp
Classic Suite	£13105 GBP pp
Triple Classic	£9279 GBP pp
Superior Suite	£13309 GBP pp
Owner's Suite	£20095 GBP pp
Premium Suite	£15909 GBP pp

### 27-Dec-2026 to 06-Jan-2027

Deluxe Suite	£13818 GBP pp
Main Deck Suite	£11370 GBP pp
Owner's Suite	£18816 GBP pp
Premium Suite	£14889 GBP pp
Classic Suite	£12186 GBP pp
Triple Classic	£8565 GBP pp
Superior Suite	£12441 GBP pp



The Small Cruise Ship Collection

[www.small-cruise-ships.com](http://www.small-cruise-ships.com)

01432 507 280 (within UK)

[info@small-cruise-ships.com](mailto:info@small-cruise-ships.com) | [small-cruise-ships.com](http://small-cruise-ships.com)