



The Small Cruise  
Ship Collection

[www.small-cruise-ships.com](http://www.small-cruise-ships.com)



[small-cruise-ships.com](http://small-cruise-ships.com)

[info@small-cruise-ships.com](mailto:info@small-cruise-ships.com)

## HISTORIC CITIES OF THE BALTIC SEA - LUXURY CRUISE

PONANT invites you to discover the historical cities along the Baltic Sea. You will embark on Le Champlain for an 10-day cruise about the cultural wonders of the Hanseatic League. Throughout your journey, you will benefit from an excursion included per person per port of call, to choose from a selection offered by PONANT. During this cruise, enjoy a visit to Gdansk and fall under the spell of the music at a Chopin concert, savour the delights of Estonian cuisine in Tallinn, or wander around the famous Suomenlinna sea fortress from Helsinki. The diversity of experiences on offer promises you intense and varied moments (to discover the full range of excursions, go to the itinerary tab). The diversity of experiences on offer promises you intense and varied moments (to discover the full range of excursions, go to the itinerary tab). From Copenhagen, you will first set a course for Karlskrona. This city, whose history is intrinsically linked to the Swedish Navy, boasts exceptional UNESCO-listed architecture that is characteristic of late-17th-century European naval cities. Your ship will then call at Gdansk, famous for its amber stone and its shipyards. The former Hanseatic city will reveal some of its architectural treasures, in Gothic and Baroque styles, restored or rebuilt. You will also discover Riga, capital of Latvia. A unique blend of different architectural styles, the old town will open itself up to you like the pages of a history book. On Saaremaa, dive into the complex history of this island, Estonia's largest. First invaded by the Vikings, it became Danish then Swedish before being taken by the Russian Empire and later occupied by the Germans. In 1991, it finally became Estonian when the country gained its independence. You will then head to Helsinki. Located on a peninsula surrounded by

almost 300 islands, the verdant capital of Finland will charm you with its Art Nouveau architecture. You will visit Tallinn, emblematic city of the Hanseatic League, the large trading network that dominated the Baltic Sea for several centuries. Listed as UNESCO Heritage Site, this once opulent city still have remarkably well-preserved public buildings, merchant houses and warehouses. Your ship will finally head for Stockholm, your



disembarkation port.

### ITINERARY

Day 1 COPENHAGEN



The Small Cruise  
Ship Collection

[www.small-cruise-ships.com](http://www.small-cruise-ships.com)

01432 507 280 (within UK)

[info@small-cruise-ships.com](mailto:info@small-cruise-ships.com) | [small-cruise-ships.com](http://small-cruise-ships.com)



## The Small Cruise Ship Collection

[www.small-cruise-ships.com](http://www.small-cruise-ships.com)



[small-cruise-ships.com](http://small-cruise-ships.com)

[info@small-cruise-ships.com](mailto:info@small-cruise-ships.com)

Connected to the far eastern side of Sealand island, a few kilometres away from the Swedish coasts, Copenhagen offers you the high colour of Scandinavian capitals. You can discover the city's riches that weaves through the canal networks through the historical districts of Christiansborg and Nyhavn. Many palaces provide an aperçu of Danish history. For eating, you can try out the smørrebrød, traditional danish sandwiches made with ham, cheese or smoked fish.

### Day 2 KARLSKRONA

Discover Karlskrona on the southern coast of Sweden, between land and sea, spread over the small islands of the Blekinge archipelago. Its strategic position on the Baltic Sea made it the headquarters of the Swedish Royal Navy and its naval dockyard on the orders of King Karl XI of Sweden, in 1680. Constructed from nothing, the citadel has kept its architecture, whose coherence and conservation have today earned its listing as a UNESCO World Heritage Site. Its authentic colourful wooden houses facing the sea - which is never too far away - and its rich naval history give it an exquisite and unique charm. Do not miss this visit.

### Day 3 GDANSK

This ravishing city on the Baltic sea is nicknamed "the golden door of Poland", and you'll understand why when you see its beautiful Hanseatic architecture. You'll be charmed by the mouldings and gables that enhance the colourful façades of the houses. Along the Vistula Quays, you can take a pleasant stroll

among the crafts shops. In elegant Mariacka street, the amber jewellers will most certainly tempt you into their boutiques. You can visit the church of Saint-Mary and its astronomic clock. Not far, the majestic Long Market square offers the famous Artus Court and the rich Gdansk History Museum.

### Day 4 AT SEA

During your journey at sea, make the most of the many services and activities on board. Treat yourself to a moment of relaxation in the spa or stay in shape in the fitness centre. Depending on the season, let yourself be tempted by the swimming pool or a spot of sunbathing. This journey without a port of call will also be an opportunity to enjoy the conferences or shows proposed on board, depending on the activities offered, or to do some shopping in the boutique or to meet the PONANT photographers in their dedicated space. As for lovers of the open sea, they will be able to visit the ship's upper deck to admire the spectacle of the waves and perhaps be lucky enough to observe marine species. A truly enchanted interlude, combining comfort, rest and entertainment.

### Day 5 RIGA

At the place where East meets West on the edge of the Baltic Sea, Riga, the capital of Latvia, will charm you with its contrasts. Although it is one of the oldest cities in the Baltic states, with a unique atmosphere that is imbued with the memory of its medieval past, Riga is also tangibly dynamic and modern. As you stroll through its old town, you will enjoy its exceptional architecture, its cathedrals, the remains of old walls and the



The Small Cruise Ship Collection

[www.small-cruise-ships.com](http://www.small-cruise-ships.com)

**01432 507 280** (within UK)

[info@small-cruise-ships.com](mailto:info@small-cruise-ships.com) | [small-cruise-ships.com](http://small-cruise-ships.com)





## The Small Cruise Ship Collection

[www.small-cruise-ships.com](http://www.small-cruise-ships.com)



[small-cruise-ships.com](http://small-cruise-ships.com)

[info@small-cruise-ships.com](mailto:info@small-cruise-ships.com)

typical narrow streets. Nicknamed "the Paris of the North" in the 1930s, this cosmopolitan city boasts a rich heritage.

### Day 6 SAAREMAA

Welcome to Estonia's largest island, Saaremaa, with its age-old history and mysterious charm. Located in the Baltic Sea, it closes off the Gulf of Riga. The episcopal castle, a medieval fortress and preserved witness of the rich history of the Baltic States, stands proudly in the island's capital, Kuressaare. The island's soils and mild climate give it abundant and diverse nature, where forests, cliffs, dunes and beaches flourish, becoming a haven for thousands of migratory birds every year. The island offers many treasures, between wild nature, nature reserves, meteor craters and windmills.

### Day 7 HELSINKI

Seated in the southern peninsula of Finland, Helsinki offers the buzz of a cosmopolitan city that has opted for both elegance and beauty. Explore its historical centre where the soft hues of neoclassical buildings are juxtaposed with spectacular modern constructions. The bustling Kallio district is teeming with boutiques and restaurants where you can taste some local specialities like graavilohi - a sweet, marinated, aromatic salmon dish. Keskuspuiisto park, a stone's throw from the centre, is a good place to sit and unwind.

### Day 8 TALLINN

Opening onto the Baltic sea, to the far north of Estonia, the town of Tallin will win you over with the picturesque charm of its architecture. You can meander through its little streets in the heart of the medieval centre where its gothic town hall has been standing since 1404. The Kiek in de Kok tower, the Orthodox Alexander Nevski cathedral, or Toompea castle give visitors a taste of this town's rich past. The city was particularly active during the medieval period, as is demonstrated by the very beautiful monuments from this period that are still visible. Don't hesitate to lose yourself in the heart of Tallinn, listed as a UNESCO World Heritage Site.

### Days 9 - 10 COPENHAGEN

The capital of Sweden occupies an archipelago in the east of the country at the junction of Malar Lake and the Baltic sea. In Gamla stan, meaning "old town" in Swedish, you can stroll at your leisure in picturesque medieval streets until you reach the majestic Royal Palace. On the green island of Djurgarden, you can visit several very different kinds of cultural centres: the Vasa museum is dedicated to a 17th century three-mast, the ecomuseum of Skansen presents traditional customs, and the ABBA museum is dedicated to the legendary pop group. For a fantastic, all-encompassing view of Stockholm, you can take a ride in SkyView, a glass-encased sphere gondola that takes you to the top of the world's largest building, the Ericsson Globe, a Stockholm landmark.

Please Note:



The Small Cruise Ship Collection

[www.small-cruise-ships.com](http://www.small-cruise-ships.com)

**01432 507 280** (within UK)

[info@small-cruise-ships.com](mailto:info@small-cruise-ships.com) | [small-cruise-ships.com](http://small-cruise-ships.com)



## The Small Cruise Ship Collection

[www.small-cruise-ships.com](http://www.small-cruise-ships.com)



[small-cruise-ships.com](http://small-cruise-ships.com)

[info@small-cruise-ships.com](mailto:info@small-cruise-ships.com)

Itineraries are subject to change.



The Small Cruise  
Ship Collection

[www.small-cruise-ships.com](http://www.small-cruise-ships.com)

**01432 507 280** (within UK)

[info@small-cruise-ships.com](mailto:info@small-cruise-ships.com) | [small-cruise-ships.com](http://small-cruise-ships.com)



## The Small Cruise Ship Collection

[www.small-cruise-ships.com](http://www.small-cruise-ships.com)



[small-cruise-ships.com](http://small-cruise-ships.com)

[info@small-cruise-ships.com](mailto:info@small-cruise-ships.com)

### YOUR SHIP: LE CHAMPLAIN

**YOUR SHIP:** Le Champlain

**VESSEL TYPE:**

**LENGTH:**

**PASSENGER CAPACITY:**

**BUILT/REFURBISHED:**

Featuring innovative and environmentally-friendly equipment, elegantly designed cabins, spacious suites with large windows, and lounge areas that open onto the outside, this new limited-capacity yacht boasting just 92 cabins and suites will offer you a truly unique cruising experience. As the first ship in a new series, Le Champlain will embody the unique atmosphere that is the cruise line's hallmark: a subtle blend of refinement, intimacy and comfort. Aboard this ship that flies the French flag, you will experience the incomparable pleasure of an intimate cruise, with the possibility of exploring an ever-increasing range of destinations in an ethnic-chic ambiance with luxury service. Experience a luxurious setting where the accent is on authenticity and passion for travel. **RESTAURANTS** As it is an essential part of French culture, gastronomy will naturally have pride of place aboard this new ship. Through its two restaurants, Le Champlain will invite you on a journey to elegance and epicureanism. In a relaxed atmosphere, a first dining area located on Deck 3 and able to seat 70 will serve grilled meats daily, along with a variety of salads and desserts. To the back of Deck 4, you will find a 260 m<sup>2</sup> panoramic restaurant which can accommodate all of our passengers in a single sitting. Designed

differently to that on our other ships, this dining area, which opens onto the outside, will have a buffet of salads, desserts and cheeses at your disposal. Our discreet and attentive crew will provide table service for hot meals. **PUBLIC AREAS** Like Le Boreal and its sisterships, Le Champlain has many common areas that are designed and equipped to meet all of your needs while preserving the intimacy of each passenger. A 140 m<sup>2</sup> reception area includes: A reception/concierge desk, An excursions desk, The ship's administrative services, The sales office, manned by our Guest Relations Officer, Our 50 m<sup>2</sup> boutique which sells clothing, jewellery, beauty products, postcards and various accessories, Toilets accessible to passengers with reduced mobility. A new hydraulic platform with adjustable height provides: Easier boarding than on any other cruise ship, Easier Zodiac embarkation and disembarkation for expeditions, Easier access to the sea for swimming and practising various water sports such as kayaking or paddle-boarding. A pool deck offering: A pool with a panoramic view, equipped with a counter-current swimming system, A pleasant solarium, An outdoor bar and lounge with armchairs and sofas. A 200 m<sup>2</sup> main lounge which can accommodate all of our passengers to share convivial moments and to host activities organised during the day or evening. Lastly, a theatre that seats 188, equipped with: The latest sound and lighting technology, A LED wall as the stage backdrop, for the projection of high-resolution images and videos. Please click the following links to read more about Ponant and the other Ponant



The Small Cruise Ship Collection

[www.small-cruise-ships.com](http://www.small-cruise-ships.com)

**01432 507 280** (within UK)

[info@small-cruise-ships.com](mailto:info@small-cruise-ships.com) | [small-cruise-ships.com](http://small-cruise-ships.com)





## The Small Cruise Ship Collection

[www.small-cruise-ships.com](http://www.small-cruise-ships.com)



[small-cruise-ships.com](http://small-cruise-ships.com)

[info@small-cruise-ships.com](mailto:info@small-cruise-ships.com)



cruise ships.



The Small Cruise  
Ship Collection

[www.small-cruise-ships.com](http://www.small-cruise-ships.com)

**01432 507 280** (within UK)

[info@small-cruise-ships.com](mailto:info@small-cruise-ships.com) | [small-cruise-ships.com](http://small-cruise-ships.com)



# The Small Cruise Ship Collection

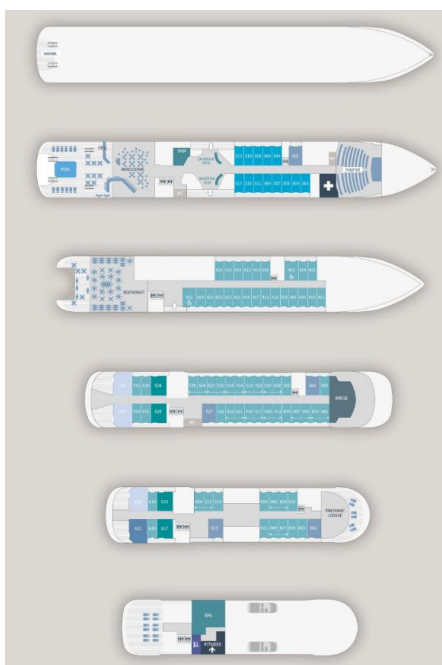
[www.small-cruise-ships.com](http://www.small-cruise-ships.com)



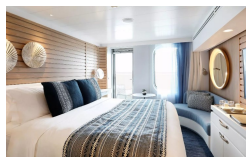
[small-cruise-ships.com](http://small-cruise-ships.com)

[info@small-cruise-ships.com](mailto:info@small-cruise-ships.com)

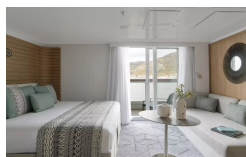
## INSIDE YOUR SHIP



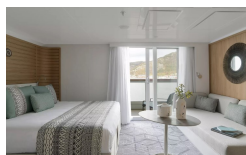
Deluxe Stateroom



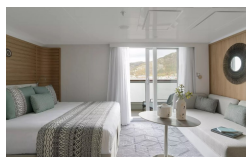
Deluxe Suite Deck 3



Deluxe Suite Deck 4



Deluxe Suite Deck 5



Deluxe Suite Deck 6

Grand Deluxe Suite Deck 6

Prestige Deck 5

Prestige Deck 6

Privilege Suite Deck 5

Grand Deluxe Suite Deck 5

Prestige Deck 4

Prestige Deck 5 Suite

Prestige Deck 6 Suite

Privilege Suite Deck 6



The Small Cruise Ship Collection

[www.small-cruise-ships.com](http://www.small-cruise-ships.com)

01432 507 280 (within UK)

[info@small-cruise-ships.com](mailto:info@small-cruise-ships.com) | [small-cruise-ships.com](http://small-cruise-ships.com)



# The Small Cruise Ship Collection

[www.small-cruise-ships.com](http://www.small-cruise-ships.com)



[small-cruise-ships.com](http://small-cruise-ships.com)

[info@small-cruise-ships.com](mailto:info@small-cruise-ships.com)

## PRICING

03-Aug-2026 to 10-Aug-2026

Prestige Deck 5	£7575 GBP pp
Prestige Deck 6	£7995 GBP pp
Privilege Suite Deck 6	£16345 GBP pp
Deluxe Suite Deck 5	£11029 GBP pp
Privilege Suite Deck 5	£16345 GBP pp
Grand Deluxe Suite Deck 6	£17935 GBP pp
Deluxe Suite Deck 6	£11029 GBP pp
Prestige Deck 4	£7235 GBP pp
Prestige Deck 5 Suite	£14825 GBP pp
Deluxe Suite Deck 3	£11029 GBP pp
Deluxe Suite Deck 4	£11029 GBP pp
Grand Deluxe Suite Deck 5	£17935 GBP pp
Deluxe Stateroom	£6545 GBP pp
Prestige Deck 6 Suite	£15585 GBP pp

### ADDITIONAL CHARGES:

Port Taxes & Fees 670 AUD pp



The Small Cruise Ship Collection

[www.small-cruise-ships.com](http://www.small-cruise-ships.com)

01432 507 280 (within UK)

[info@small-cruise-ships.com](mailto:info@small-cruise-ships.com) | [small-cruise-ships.com](http://small-cruise-ships.com)