



## The Small Cruise Ship Collection

[www.small-cruise-ships.com](http://www.small-cruise-ships.com)

[small-cruise-ships.com](http://small-cruise-ships.com)

[info@small-cruise-ships.com](mailto:info@small-cruise-ships.com)

## HEAVENLY ISLANDS & IBERIAN SHORES - PORTUGAL & SPAIN LUXURY CRUISE

PONANT invites you to discover sumptuous landscapes and exceptional cities during a 12-day cruise between Portugal and Spain. Be inspired by this unforgettable journey aboard *\_Le Champlain\_* as you visit major cities of the Iberian Peninsula. Throughout your journey, you will benefit from an excursion included per person per port of call, to choose from a selection offered by PONANT. During this cruise, discover the Sagres fort, near Lagos ; attend a cavalcade at a finca in Cartagena ; or go to a flamenco show in Cadiz. The diversity of experiences on offer promises you intense and varied moments (to discover the full range of excursions, go to the itinerary tab). Leaving from the bustling capital of Catalonia, Barcelona, you will sail west to reach the mythical Balearic Islands archipelago. On the preserved island of Menorca, Mahon will charm you with its age-old history and its port, which, at 6 kilometres (3.7 miles) long, is the biggest in the Mediterranean. A little further on, Ibiza , the "White Island" will enchant you with its wild coves and villages of white *\_fincas\_* , a natural beauty that has earned the status of UNESCO World Heritage Site. In Valencia , a lively city brimming with culture, do not miss the Silk Exchange , a flamboyant Gothic masterpiece listed as a UNESCO World Heritage Site, illustrating how powerful this mercantile city was in the 15th and 16th centuries. You will arrive in Cartagena , a former Roman colony where there is still a majestic amphitheatre. As you roam the city, you will discover the many monuments reflecting its numerous influences and rich history. After a port of call in Motril , at the foot of the Sierra de Lujar, *\_Le Champlain\_* will sail for Malaga , the cultural capital of the Costa del Sol. To the heart of the old town, its history can be

read in its buildings, in particular the 10th century castle built by the Moors. You will also have the possibility of strolling through the picturesque town of Ronda and discovering its famous Puente Nuevo. Then, you will discover Cadiz , one of the country's oldest cities, built on a rock and surrounded by the sea. Your exploration continues in the Algarve region at the country's southern tip. Bewitching Lagos stands proud like a fortress in hues of ochre and orange, bordered by the turquoise waters of the Atlantic Ocean. In this town of nature and culture, stroll in the paved small streets of the historic centre whose Moorish and Portuguese influences create a delightful blend. Further north, you will arrive in Lisbon, sitting on the Tagus River, distilling its one-of-a-kind charm imbued with rich history. In Figueira da Foz , at the mouth of the Mondego River, you will love the slow pace of this historic seaside resort and its beaches of white sand. Your cruise will end in Leixoes , one of Portugal's largest maritime ports, not far

The Small Cruise  
Ship Collection  
[www.small-cruise-ships.com](http://www.small-cruise-ships.com)

01432 507 280 (within UK)

[info@small-cruise-ships.com](mailto:info@small-cruise-ships.com) | [small-cruise-ships.com](http://small-cruise-ships.com)

# The Small Cruise Ship Collection

www.small-cruise-ships.com

small-cruise-ships.com

info@small-cruise-ships.com



typically Mediterranean lifestyle of the capital of Catalonia.

## Day 2 - Mahon, Balearic Islands

You will be welcomed by the colourful houses of Mahon, its narrow streets and pretty squares that appear as you stroll around this richly contrasting city. Mahon reveals its different neighbourhoods, alternating between monuments, villas and white buildings. Discover the Santa Maria church, a building of neo-gothic inspiration, rebuilt in the 18th Century. It is worth a visit to see its monumental organ with more than 3,000 pipes and four keyboards. Around the Carmen church you will find a local market, full of stands selling avarcas, typical Menorcan sandals originally made by peasants. Let yourself fall under the spell of this Mediterranean treasure.

## Day 3 - Ibiza, Balearic Islands

The emblematic island of the Balearics, "the white island" was a haven for European artistic bohemians from the 1930s and a paradise for hippies in search of authenticity in the 1960s. It has been a giant nightclub for gilded youth since the 1990s. Behind this fiesta economy, Ibiza has managed to preserve the charms of its wild coves and its villages of white fincas with flat roofs that inspired Le Corbusier. The island is a UNESCO World Heritage Site thanks to its exemplary marine and coastal ecosystems but also thanks to the architectural vestiges of this

from Porto.

## ITINERARY

### Day 1 - Barcelona

Located on the seashore between the mountains of Montjuic and Tibidabo, Barcelona offers its many visitors a perfect blend of tradition and modernism. Truly an open-air museum, the "prodigious town" reveals an astonishing range of artistic treasures and museums, combining Roman ruins, medieval districts and a number of avant-garde elements from the 20th Century. Over the years, it has been marked by some of the greatest artists, such as Picasso, Miro or Gaudi, most of whose work has been listed as World Heritage Sites by UNESCO. Take the time to stroll along the Ramblas and enjoy the gentle,





former stronghold of the Mediterranean economy, from the Phoenicians up to the Renaissance.

#### Day 4 - Valencia

Valencia - the city of Art and Sciences. Two hearts beat in this Spanish city: one is modern, avantgarde and almost futuristic; the other is more provincial, more traditional and nostalgic. Valencia has the temperament of a great Mediterranean city whose wide avenues form a border around the old town. The city has an abundance of architectural styles that coexist harmoniously, but above all it resolutely embraces the 21st Century with the futuristic structures of its Agora congress centre and City of Arts and Sciences, emerging from a crystal blue pool.

#### Day 5 - Cartagena

Surrounded by hills, the natural site of the Bay of Cartagena presided over the fate of this former fortress which has been home to the greatest European civilisations. Today, these Phoenician, Roman, Carthaginian, Moorish and Christian influences form a rich architectural heritage. Its Roman theatre is one of the most significant and best conserved in Spain. You will also be able to cross the landscapes of vines and citrus groves stretching endlessly towards Murcia, to visit this dynamic regional capital.

#### Day 6 - Motril

On the shores of the Mediterranean, Motril enjoys a special place on the Costa Tropical. Sheltered from the cold northerly winds thanks to the mountains that surround this Andalusian city, the city benefits from an ideal micro-climate.

#### Day 7 - Malaga

A historical and festive town, Malaga is located in Andalusia, on the Costa del Sol. Between the marina and the beaches, the seaside promenade of La Farola offers an ideal setting for strolling and relaxing. Set slightly further back, the Malagueta bullring is one of the emblematic sites of the city. From the hill overlooking the old town, one can see Gibralfaro castle and the Alcazaba, two fortified ensembles rising out from the cypresses and maritime pines. To visit Pablo Picasso's birthplace, you will go first to the courtly plaza de la Merced. A few streets back from here, you can explore the museum dedicated to the artist, in the Buenavista palace.

#### Day 8 - Cadiz



## The Small Cruise Ship Collection

[www.small-cruise-ships.com](http://www.small-cruise-ships.com)

[small-cruise-ships.com](http://small-cruise-ships.com)

[info@small-cruise-ships.com](mailto:info@small-cruise-ships.com)

### Day 10 - Lisbon

Andalusia's Cadiz is located on the Costa de la Luz, in the south-west of Spain. From the beaches of Cortadura, to the flamenco bars of Santa Maria, through the colourful streets of la Viña, you will be amazed by this city, which is both steeped in history and extremely festive. In the medieval El Populo district, you will stroll along covered passages in the narrow gaps between houses. You will also be able to mosey around the lush Mina square. The star of the show is the magnificent cathedral and its dome crowned with yellow porcelain, presiding above the Ocean.

Portugal's capital city located on the banks of the Tagus, only a few kilometres from the Atlantic coast, is a city of exceptionally rich cultural diversity. At the mouth of the river harbour, impose two UNESCO World Heritage monuments, Jeronimos monastery and Belem tower. The Alfama hillside is also worth visiting: known for its fado bars and its Moorish streets, this district is the oldest one of the city and one of the most typical. Not far from there, Chiado's elegant streets are home to big fashion labels and are an invitation to a bit of luxury shopping.

### Day 9 - Lagos

There stands a natural paradise called Lagos, bordered by the Atlantic Ocean, in the Algarve region of southern Portugal. With its picturesque and age-old town centre, and the Ponta da Piedade natural site sheltering paradisiacal beaches protected by captivating limestone cliffs in hues of ochre, Lagos enthral, fascinates and enchants. In this interesting blend between nature and culture, do not miss the chance to stroll along the small paved streets of its historic centre, surrounded by impressive Moorish ramparts and edged with traditional white houses, with decorations sculpted in the stone. In particular, you will be able to admire the Manuelian-style Governor's Castle, the 17th-century Ponta da Bandeira Fort or the Church of Santo Antonio in Baroque architecture.

### Day 11 - Figueira da Foz

### Day 12 - Leixões - Porto

Located at the mouth of the Douro River, the port of Leixoes lies less than 10 kilometres from Porto. A UNESCO World Heritage Site, the historic centre of Porto is worth a visit for its famous Ribeira district, the metallic silhouette of the Dom-Luis bridge looming over its ancient houses, its richly decorated Baroque churches and its national Soares dos Reis museum. The Sao Bento station is also interesting for its typically Portuguese decoration, using Azulejos, blue square ceramic tiles decorated with geometric patterns or figurative scenes.

Please Note:

The Small Cruise Ship Collection  
[www.small-cruise-ships.com](http://www.small-cruise-ships.com)

**01432 507 280** (within UK)

[info@small-cruise-ships.com](mailto:info@small-cruise-ships.com) | [small-cruise-ships.com](http://small-cruise-ships.com)





The Small Cruise  
Ship Collection

[www.small-cruise-ships.com](http://www.small-cruise-ships.com)

[small-cruise-ships.com](http://small-cruise-ships.com)

[info@small-cruise-ships.com](mailto:info@small-cruise-ships.com)

Itineraries are subject to change.



The Small Cruise  
Ship Collection

[www.small-cruise-ships.com](http://www.small-cruise-ships.com)

**01432 507 280** (within UK)

[info@small-cruise-ships.com](mailto:info@small-cruise-ships.com) | [small-cruise-ships.com](http://small-cruise-ships.com)



## The Small Cruise Ship Collection

[www.small-cruise-ships.com](http://www.small-cruise-ships.com)

[small-cruise-ships.com](http://small-cruise-ships.com)

[info@small-cruise-ships.com](mailto:info@small-cruise-ships.com)

## YOUR SHIP: LE CHAMPLAIN

**YOUR SHIP:** Le Champlain

**VESSEL TYPE:**

**LENGTH:**

**PASSENGER CAPACITY:**

**BUILT/REFURBISHED:**

Featuring innovative and environmentally-friendly equipment, elegantly designed cabins, spacious suites with large windows, and lounge areas that open onto the outside, this new limited-capacity yacht boasting just 92 cabins and suites will offer you a truly unique cruising experience. As the first ship in a new series, Le Champlain will embody the unique atmosphere that is the cruise line's hallmark: a subtle blend of refinement, intimacy and comfort. Aboard this ship that flies the French flag, you will experience the incomparable pleasure of an intimate cruise, with the possibility of exploring an ever-increasing range of destinations in an ethnic-chic ambiance with luxury service. Experience a luxurious setting where the accent is on authenticity and passion for travel. **RESTAURANTS** As it is an essential part of French culture, gastronomy will naturally have pride of place aboard this new ship. Through its two restaurants, Le Champlain will invite you on a journey to elegance and epicureanism. In a relaxed atmosphere, a first dining area located on Deck 3 and able to seat 70 will serve grilled meats daily, along with a variety of salads and desserts. To the back of Deck 4, you will find a 260 m<sup>2</sup> panoramic restaurant which can accommodate all of our passengers in a single sitting. Designed

differently to that on our other ships, this dining area, which opens onto the outside, will have a buffet of salads, desserts and cheeses at your disposal. Our discreet and attentive crew will provide table service for hot meals. **PUBLIC AREAS** Like Le Boreal and its sisterships, Le Champlain has many common areas that are designed and equipped to meet all of your needs while preserving the intimacy of each passenger. A 140 m<sup>2</sup> reception area includes: A reception/concierge desk, An excursions desk, The ship's administrative services, The sales office, manned by our Guest Relations Officer, Our 50 m<sup>2</sup> boutique which sells clothing, jewellery, beauty products, postcards and various accessories, Toilets accessible to passengers with reduced mobility. A new hydraulic platform with adjustable height provides: Easier boarding than on any other cruise ship, Easier Zodiac embarkation and disembarkation for expeditions, Easier access to the sea for swimming and practising various water sports such as kayaking or paddle-boarding. A pool deck offering: A pool with a panoramic view, equipped with a counter-current swimming system, A pleasant solarium, An outdoor bar and lounge with armchairs and sofas. A 200 m<sup>2</sup> main lounge which can accommodate all of our passengers to share convivial moments and to host activities organised during the day or evening. Lastly, a theatre that seats 188, equipped with: The latest sound and lighting technology, A LED wall as the stage backdrop, for the projection of high-resolution images and videos. Please click the following links to read more about Ponant and the other Ponant

The Small Cruise  
Ship Collection  
[www.small-cruise-ships.com](http://www.small-cruise-ships.com)

**01432 507 280** (within UK)

[info@small-cruise-ships.com](mailto:info@small-cruise-ships.com) | [small-cruise-ships.com](http://small-cruise-ships.com)





# The Small Cruise Ship Collection

[www.small-cruise-ships.com](http://www.small-cruise-ships.com)



[small-cruise-ships.com](http://small-cruise-ships.com)

[info@small-cruise-ships.com](mailto:info@small-cruise-ships.com)



cruise ships.

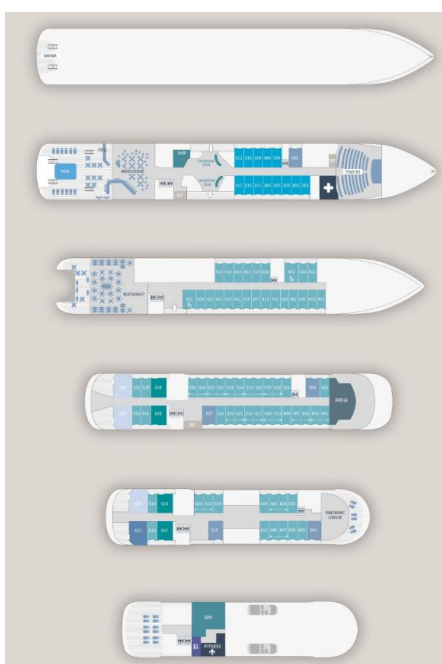
# The Small Cruise Ship Collection

www.small-cruise-ships.com

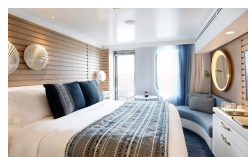
small-cruise-ships.com

info@small-cruise-ships.com

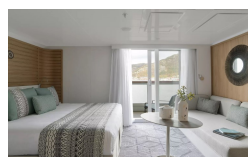
## INSIDE YOUR SHIP



Deluxe Stateroom

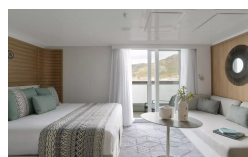


Deluxe Suite Deck 3



Deluxe Suite Deck 4

Deluxe Suite Deck 5



Deluxe Suite Deck 6

Grand Deluxe Suite Deck 5

Grand Deluxe Suite Deck 6

Prestige Deck 4

Prestige Deck 5

Prestige Deck 5 Suite

Prestige Deck 6

Prestige Deck 6 Suite

Privilege Suite Deck 5

Privilege Suite Deck 6

The Small Cruise Ship Collection  
www.small-cruise-ships.com

01432 507 280 (within UK)

info@small-cruise-ships.com | small-cruise-ships.com





# The Small Cruise Ship Collection

[www.small-cruise-ships.com](http://www.small-cruise-ships.com)

[small-cruise-ships.com](http://small-cruise-ships.com)

[info@small-cruise-ships.com](mailto:info@small-cruise-ships.com)

## PRICING

06-May-2026 to 17-May-2026

Deluxe Suite Deck 4	£13035 GBP pp
Deluxe Stateroom	£6885 GBP pp
Privilege Suite Deck 6	£15565 GBP pp
Prestige Deck 6 Suite	£14835 GBP pp
Privilege Suite Deck 5	£15565 GBP pp
Prestige Deck 4	£7245 GBP pp
Grand Deluxe Suite Deck 6	£18819 GBP pp
Deluxe Suite Deck 5	£13035 GBP pp
Deluxe Suite Deck 6	£13035 GBP pp
Prestige Deck 5	£7599 GBP pp
Grand Deluxe Suite Deck 5	£18819 GBP pp
Deluxe Suite Deck 3	£13035 GBP pp
Prestige Deck 6	£8035 GBP pp
Prestige Deck 5 Suite	£14475 GBP pp