



 The Small Cruise  
Ship Collection  
[www.small-cruise-ships.com](http://www.small-cruise-ships.com)

[small-cruise-ships.com](http://small-cruise-ships.com)

[info@small-cruise-ships.com](mailto:info@small-cruise-ships.com)

## GREENLAND, LABRADOR AND NEWFOUNDLAND - ENCOUNTERS AT THE EDGE EXPEDITION CRUISE

Four iconic regions of the pristine North Setting out from Greenland's picturesque capital Nuuk, we'll traverse the shores of Baffin Bay - the icy sea that links east and west and binds the cultures of Arctic Canada and Greenland. This all-encompassing expedition cruise reveals the exquisite southern fjords of Greenland, the majestic grandeur of the Torngat Mountains, the historic settlements of coastal Labrador, and the charm of Newfoundland. Sailing expedition-style, days will be filled with awe and wonder as we set foot in some of the most out-of-the-way places on the planet. Exploration at the edge As we cruise through biologically rich marine environments and visit remote communities, you'll learn about the distinct Inuit cultures found in Greenland and Labrador. This region has a captivating past, situated at a crossroads where migrations from the East and the West met. Uncover the diverse histories of European explorers, Viking settlers, Moravian missionaries and Basque whalers, on a fascinating deep dive into the history and ecology of this pristine and under-explored destination.

 The Small Cruise  
Ship Collection  
[www.small-cruise-ships.com](http://www.small-cruise-ships.com)

**01432 507 280** (within UK)

[info@small-cruise-ships.com](mailto:info@small-cruise-ships.com) | [small-cruise-ships.com](http://small-cruise-ships.com)

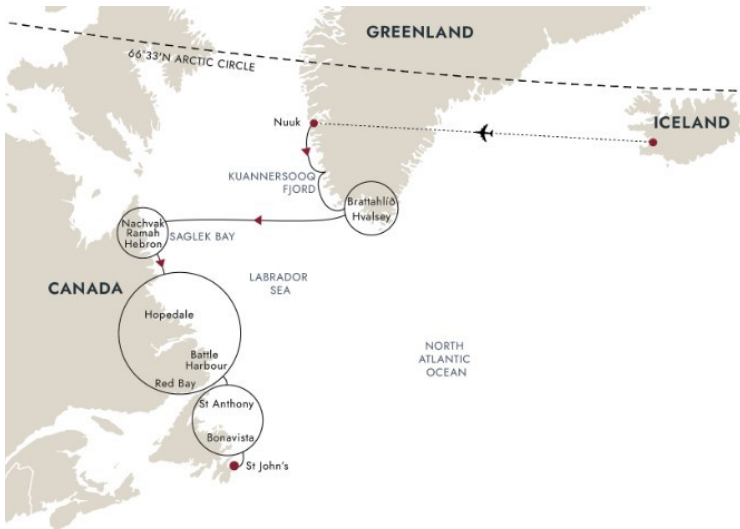
# The Small Cruise Ship Collection

www.small-cruise-ships.com



small-cruise-ships.com

info@small-cruise-ships.com



If you have the time, we recommend booking a Pre-Programme with us and discovering some of Iceland's natural highlights before your cruise begins.

DAY 2 Embarkation day in Nuuk

Welcome to the capital of Greenland

You'll have an early start today as we depart Reykjavik and fly to Nuuk.

Nuuk is Greenland's colourful and compact capital. With a population of fewer than 20,000, it's a striking mix of old and modern buildings. If you're more a fan of the former, head down to the old part of town by the waterfront, where you'll find Nuuk Cathedral and the statue of the Danish missionary Hans Egede standing on a hill. In the water below, look out for the beautiful Mother of the Sea statue for a striking juxtaposition between two cultures.

Your expedition ship awaits you in the harbour. After being welcomed aboard and collecting your complimentary expedition jacket, it's time to settle into your cabin and then enjoy your first dinner on board.

DAY 3 A day at sea

## ITINERARY

DAY 1 Cosmopolitan Reykjavik

Explore the world's northernmost capital, Reykjavik

Your adventure begins with an overnight stay in Reykjavik.

A laid-back city of art, culture and history, delightful Reykjavik is well worth exploring.

Take a stroll along Laugavegur with its boutiques and outdoor shops, gaze in awe at the striking Hallgrímskirkja Church, and drop in on the fascinating Reykjavik Art Museum.

The Small Cruise Ship Collection

www.small-cruise-ships.com

01432 507 280 (within UK)

info@small-cruise-ships.com | small-cruise-ships.com



Prepare for adventure as we head south

While sailing towards South Greenland, you'll have time to get acquainted with the AECO rules and recommendations regarding operations and landings in the fragile Arctic environment. Make sure you attend these fascinating and important presentations.

You can also enjoy the state-of-the-art ship facilities and join the first lectures on topics such as ornithology, geology and culture. You'll also learn about the Citizen Science projects we run on board the ship.

The coast of Greenland is carved by many fjords. Depending on the conditions, in the afternoon we may be able to cruise deep into one of our favourites, Kuannersooq Fjord, as it's known in Greenlandic, or Kvanerfjord in Danish.

[DAY 4-5 Kujalleq and the Viking settlements](#)

Greenlandic life at the edge of the ice cap

South Greenland offers curious travellers an intriguing blend of Norse history, Inuit culture, and breathtaking landscapes.

Here you can explore Viking settler ruins, and discover colourful small towns, marvelling at awe-inspiring fjords, mountains,

glaciers and icebergs along the way. Combining rich cultural experiences with thrilling outdoor adventures, both history enthusiasts and nature lovers will be enraptured.

Over the next two days, our possible destinations and landing sites include:

Kujataa UNESCO World Heritage Site

Qassiarsuk

Brattahlið (Qassiarsuk)

Hvalsey

Qaqortoq

[DAY 6-7 Relax at sea](#)

Sailing to the gates of the Torngat Mountains

After a few days of exploration, enjoy a day at sea and prepare for what lies ahead as we continue westward along the route of the Vikings, across Baffin Bay to the rugged coast of Labrador.

Why not listen to another fascinating presentation from the Expedition Team, perhaps on biology, ornithology or history of the region. They'll continue to entertain and educate with their series of lectures and demonstrations. There will be storytelling,



[small-cruise-ships.com](http://small-cruise-ships.com)

[info@small-cruise-ships.com](mailto:info@small-cruise-ships.com)

art and craft workshops and perhaps even some singing. In September at this latitude, there may also be the opportunity to see the Northern Lights. If they appear in the middle of the night, be prepared for a gentle wake-up call!

DAY 8-10 Northern Labrador

Witness the immense Torngat Mountains

Welcome to Canada! After clearing customs, we'll be joined by Park Rangers who'll accompany us as we explore the Torngat Mountains National Park over the coming days.

Meaning 'place of spirits' in Inuktitut, the national park spans some 6,000 miles, extending from Saglek Fjord to Labrador's tip, and from the Atlantic coast to the Quebec border. This wilderness is peppered with small glaciers and it's home to polar bears and caribou. It also has rich Inuit heritage of hunting and fishing.

While exploring this magnificent area, we hope to visit:

Saglek Bay

Nachvak Fiord

Ramah

DAY 11-15 The Labrador coast

Head back in time and delve into the history of Labrador

Over the next five days, we'll cruise south, unearthing the fascinating history of coastal Labrador and discovering its rich cultural heritage.

This area is home to some of Labrador's most important Moravian settlements, and a once busy fishing village that's now a National Historic Site. There are also breathtaking waterways to transit and a whaling past to uncover. Over the next five days, our potential destinations may include:

Hebron

Mugford Tickle

Hopedale

Battle Harbour

Red Bay

DAY 16-17 Charming Newfoundland

Relive the tales of Vikings, pioneers and early explorers



journey.

Whatever your next steps are, you'll take with you a wealth of memories that will no doubt endure, and experiences that will change the way you see the world.

Please note:

Itineraries are subject to change.

Your cruise continues to the island of Newfoundland. With a coastline of towering mountains, peaceful bays and lush forests, and a heritage that's colorful and diverse, Newfoundland is sure to enchant.

As we explore, you can delve into the island's past, from pioneering missionaries and early explorers to as far back as Viking settlers. Over the next two days, we hope to visit:

St Anthony

UNESCO-listed L'Anse aux Meadows & Norstead

Bonavista

DAY 18 Reaching St John's

End your adventure on a colourful note

We say a fond farewell to our ship as we end our expedition in St John's, Newfoundland's capital.

As one of the oldest cities in North America, St John's is nothing but charming. Colourful houses are etched into the steep and rugged hillside along the coast, and Signal Hill with the proud Cabot Tower watches over the city from above. It's well worth exploring the city further if you have time before your onward

# The Small Cruise Ship Collection

[www.small-cruise-ships.com](http://www.small-cruise-ships.com)



[small-cruise-ships.com](http://small-cruise-ships.com)

[info@small-cruise-ships.com](mailto:info@small-cruise-ships.com)

## YOUR SHIP: ROALD AMUNDSEN

**YOUR SHIP:** **Roald Amundsen**

**VESSEL TYPE:**

**LENGTH:**

**PASSENGER CAPACITY:**

**BUILT/REFURBISHED:**

Launched in 2019, The state of the art vessel features new and environmentally sustainable hybrid technology that will reduce fuel consumption and show the world that hybrid propulsion on large ships is possible. MS Roald Amundsen is the first of two hybrid ships to be launched cutting emissions by sailing with electrical propulsion. Hybrid technology, combined with the advanced construction of the hull and effective use of electricity on board will reduce fuel consumption and CO2-emissions on the ships by 20 percent. The future of shipping will be silent and emission free. MS Roald Amundsen will lead the way towards an even more sustainable way of traveling. Sailing on electrical power is not only a great benefit for the environment, but it will also enhance the impact of experiencing nature for the guests. The ship will be specially constructed for voyages in polar waters and serve as a comfortable basecamp at sea - bringing adventurers from all over the world to the most spectacular destinations in the most sustainable way. These ships combine state-of-the-art technology together with a premium onboard experience. All cabins are outside, half have private balconies, and aft suites even boast private outdoor Jacuzzis, to soak up the stunning scenery in style. Facilities on board One of the

most eye-catching exterior design features of the ships will be the two-level indoor/outdoor Observation Deck wrapped around the top of the ships' raked bow. In a vast area behind it, you'll find the core of the onboard experience: Amundsen Science Center. Packed with state of the art technology and high tech gadgets such as touch screens and science equipment, the immersive edutainment area will be the place guests and staff/crew meet, mingle and create a deeper understanding for the areas they explore. The flexible venue will feature lecture spaces, a small library, and speciality areas for workshops in photography, biology, and more. The stunning scenery will be reflected in a rich and comfortable interior design. Scandinavian materials from nature, such as granite, oak, birch and wool will be used to create relaxed and stylish cabins and public areas. All cabins are outside, 50 % will have private balconies, aft suites will feature private outdoor Jacuzzis with



spectacular views.

The Small Cruise Ship Collection  
[www.small-cruise-ships.com](http://www.small-cruise-ships.com)

01432 507 280 (within UK)

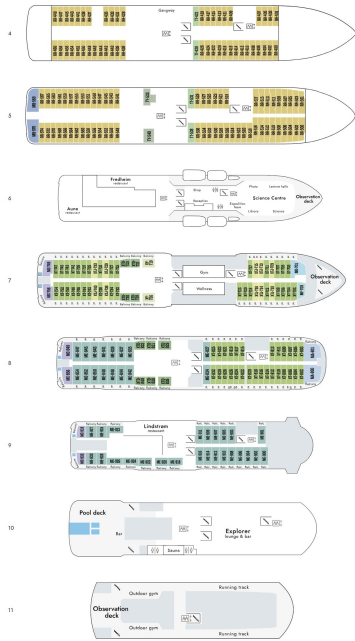
[info@small-cruise-ships.com](mailto:info@small-cruise-ships.com) | [small-cruise-ships.com](http://small-cruise-ships.com)



small-cruise-ships.com

info@small-cruise-ships.com

## INSIDE YOUR SHIP



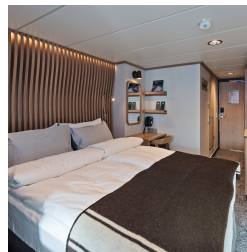
Arctic Superior. From



Expedition Suite. From



Polar Outside. From





# The Small Cruise Ship Collection

[www.small-cruise-ships.com](http://www.small-cruise-ships.com)



[small-cruise-ships.com](http://small-cruise-ships.com)

[info@small-cruise-ships.com](mailto:info@small-cruise-ships.com)

## PRICING

### 18-Sep-2025 to 05-Oct-2025

Arctic Superior. From	£11266 GBP pp
Expedition Suite. From	£14148 GBP pp
Polar Outside. From	£10244 GBP pp

### 20-Sep-2026 to 07-Oct-2026

Expedition Suite. From	£15665 GBP pp
Polar Outside. From	£11289 GBP pp
Arctic Superior. From	£12435 GBP pp



The Small Cruise Ship Collection

[www.small-cruise-ships.com](http://www.small-cruise-ships.com)

01432 507 280 (within UK)

[info@small-cruise-ships.com](mailto:info@small-cruise-ships.com) | [small-cruise-ships.com](http://small-cruise-ships.com)