

## The Small Cruise Ship Collection

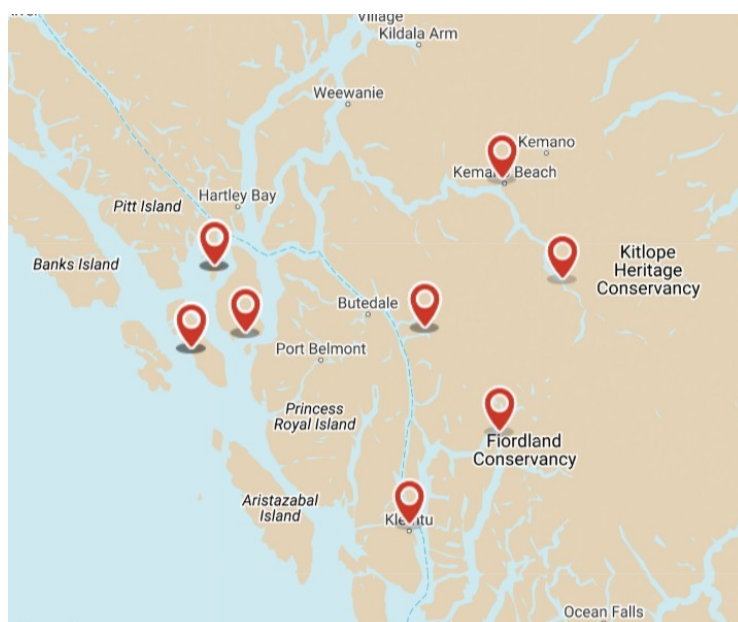
[www.small-cruise-ships.com](http://www.small-cruise-ships.com)

[small-cruise-ships.com](http://small-cruise-ships.com)

[info@small-cruise-ships.com](mailto:info@small-cruise-ships.com)

## GREAT BEAR RAINFOREST AND KITLOPE CRUISE

Wild Wonders That We Have Explored and Supported Since 1986 Cruise through dramatic coastal mountains into the stunning Kitlope River. Here, snow-capped peaks tower over estuaries where bears graze on sedge in spring or fish for salmon in late summer. Join knowledgeable crew on shore excursions to explore the Kitlope River Estuary, relax on secluded beaches, trek through ancient rainforests, and discover the area's historical significance.



### ITINERARY

Days 1-3 Tour Kickoff in Kitamaat

Day 1: Board ship at Kitamaat Village, orientation, cruising into the Great Bear Rainforest, making way towards the Kitlope River, watching for marine mammals and birds. Anchorage at remote hot springs.

Day 2: Cruise to spectacular mainland inlet estuary popular with grizzly and black bears. Estuary meadow walk (wildflowers), learning about bear habitat, river exploration, look for bears.

Day 3: Morning exploration ashore, then cruising Whale

The Small Cruise Ship Collection  
[www.small-cruise-ships.com](http://www.small-cruise-ships.com)

01432 507 280 (within UK)

[info@small-cruise-ships.com](mailto:info@small-cruise-ships.com) | [small-cruise-ships.com](http://small-cruise-ships.com)



Channel, an aptly named waterway popular with cetaceans. Visit whale research scientists at remote station. Marine mammal viewing (several species). Anchorage at remote island on west coast. Beachcombing, hike to view, beach fire.

#### Days 4-7 Gardner Canal

Day 4: Return to mainland waterways between steep islands, through channel popular with whales. Enter Gardner Canal, the longest fjord on the coast. This waterway seems like remote wilderness but is filled with the stories and history of the Henaaksiala people, and around every turn is a new story, including some sasquatch stories, and Monkey Beach.

Day 5: Sail deep into the coast mountains, leaving the outside world behind as the fjord snakes past 4,000-foot peaks to the Kitlope. Go ashore in the vast Kitlope River & estuary for the amazing tale of the G'psgolox pole. Explore the river and the estuary.

Day 6: Further exploration in the Kitlope, and/or or cruise to Kowesas to explore ashore, and then Kemaano shore trip. Cruise to hot springs.

Day 7: Cruise to Kitamaat, watching for wildlife.

#### Please note:

Itineraries are subject to change.



## The Small Cruise Ship Collection

[www.small-cruise-ships.com](http://www.small-cruise-ships.com)

[small-cruise-ships.com](http://small-cruise-ships.com)

[info@small-cruise-ships.com](mailto:info@small-cruise-ships.com)

## YOUR SHIP: CASCADIA

**YOUR SHIP:** Cascadia

**VESSEL TYPE:**

**LENGTH:**

**PASSENGER CAPACITY:**

**BUILT/REFURBISHED:**

Cascadia is a go-anywhere, expedition style catamaran. She accommodates up to 24 guests in 12 luxurious cabins, with a crew of 10. She is unlike any other vessel offering expeditions on the British Columbia coast, having been built specifically for high-quality, boutique cruises. Light, spacious and comfortable, she is also capable of reaching the wildest, most naturally rich places on the coast. Her small size and guest numbers provide an authentic, human-scale experience that respects the carrying capacity of coastal inlets and communities. Ship And Accommodations Find comfort and solitude in your private cabin or enjoy time in any of the interior or outdoor lounges, or the "open" bridge. Cascadia's large windows bring the outside in, and her separate dining area becomes a sophisticated "long table" event for meals. Her decks are wide and welcoming, with seating areas on different levels. Salon Large windows surround the salon making it a perfect place to look for whales while staying protected, chat with other guests while lounging on our comfortable sofas, or enjoy a beverage from the nearby bar. Dining Area Enjoy our chefs' fine west-coast influenced creations while watching the sun go down. Sit and discuss your day's adventure with your captain, afloat in a remote natural

anchorage. Terrace Lounge And Dining Area Dine alfresco on temperate evenings, lounge with your morning coffee, or watch the world go by during the day. This area is the perfect mix of outside and inside. Bridge of Cascadia Cascadia's bridge is open to you. You'll have 180-degree views from here, along with being able to learn about navigation and the vessel systems from our crew. On the port side, you may also enjoy our indoor-outdoor loveseat. You can watch the world go by from behind a protective window, but still have quick access to the fresh air and the deck for whale watching. Top Deck & Hot Tub Lounge on a chaise, soak under the stars, or enjoy the bird's eye view of the ship and the world around her from Cascadia's new top deck. Cabins All cabins have individual climate control, wardrobes and an outside location, with windows for natural light. All have ensembles. All are 'outside' cabins, with windows for natural light. Kayaks, Shore Boats, Naturalist Tools Cascadia has 6 double and 2 single kayaks for paddling in coves and bays, as well as two beautiful landing craft style tenders, custom designed for our program. She carries a suite of tools for exploring the natural world, including a hydrophone for listening to whales. Her library contains books on the cultural history and nature of the BC and

The Small Cruise Ship Collection  
[www.small-cruise-ships.com](http://www.small-cruise-ships.com)

01432 507 280 (within UK)

[info@small-cruise-ships.com](mailto:info@small-cruise-ships.com) | [small-cruise-ships.com](http://small-cruise-ships.com)



The Small Cruise  
Ship Collection

[www.small-cruise-ships.com](http://www.small-cruise-ships.com)

[small-cruise-ships.com](http://small-cruise-ships.com) [info@small-cruise-ships.com](mailto:info@small-cruise-ships.com)



Alaska coast.

# The Small Cruise Ship Collection

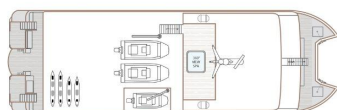
www.small-cruise-ships.com

small-cruise-ships.com

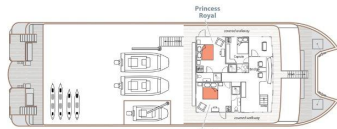
info@small-cruise-ships.com

## INSIDE YOUR SHIP

TOP DECK



BRIDGE DECK



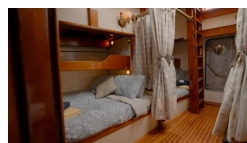
MAIN DECK



LOWER DECK



Cabin

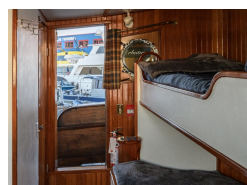


Cabin - Category 2, Option 1



Cabin - Category 2, Option 2

Cabin - Category 3



Cabins - Category 1

Category 1

Category 2

Category 3





## The Small Cruise Ship Collection

[www.small-cruise-ships.com](http://www.small-cruise-ships.com)



[small-cruise-ships.com](http://small-cruise-ships.com)

[info@small-cruise-ships.com](mailto:info@small-cruise-ships.com)

## PRICING

### 02-Jun-2026 to 09-Jun-2026

Cabin	£3372 GBP pp
-------	--------------

### 11-Jun-2026 to 18-Jun-2026

Cabin - Category 2, Option 2	£4525 GBP pp
Cabin - Category 2, Option 1	£4525 GBP pp
Cabin - Category 3	£5305 GBP pp
Cabins - Category 1	£4139 GBP pp

### 23-Aug-2026 to 29-Aug-2026

Category 1	£4665 GBP pp
Category 2	£5491 GBP pp
Category 3	£6266 GBP pp

### 28-May-2027 to 03-Jun-2027

Cabin	£2945 GBP pp
-------	--------------

### 09-Jun-2027 to 16-Jun-2027

Cabin - Category 2, Option 2	£4659 GBP pp
Cabin - Category 2, Option 1	£4659 GBP pp
Cabin - Category 3	£5469 GBP pp
Cabins - Category 1	£4265 GBP pp

### 18-Aug-2027 to 25-Aug-2027

Category 1	£4839 GBP pp
Category 2	£5699 GBP pp
Category 3	£6505 GBP pp



The Small Cruise Ship Collection

[www.small-cruise-ships.com](http://www.small-cruise-ships.com)

01432 507 280 (within UK)

[info@small-cruise-ships.com](mailto:info@small-cruise-ships.com) | [small-cruise-ships.com](http://small-cruise-ships.com)