

The Small Cruise Ship Collection

www.small-cruise-ships.com

small-cruise-ships.com

info@small-cruise-ships.com

GOLDEN PROSPECTS ALONG THE COASTS OF WESTERN EUROPE

Enjoy a time full of special moments: breathe in the sea air against the backdrop of famous French coastal towns, discover the white capital of Portugal and let yourself be inspired by the temperament of Andalusia.



ITINERARY

Day 1 Individual travel arrangements to cruise departure point Hamburg/Germany, departure 19.00 hrs

Day 2 Relaxation at sea

Day 3 Antwerp/Belgium, 06.45 - 18.00 hrs

On the banks of the River Schelde, Antwerp is one of Belgium's liveliest port and cultural cities. Since the Middle Ages, Europe's second-largest port has brought prosperity to the city and connected it to the North Sea. Still today, the magnificent guild

The Small Cruise Ship Collection

www.small-cruise-ships.com

01432 507 280 (within UK)

info@small-cruise-ships.com | small-cruise-ships.com



The Small Cruise Ship Collection

www.small-cruise-ships.com

small-cruise-ships.com

info@small-cruise-ships.com

houses on the Grote Markt and the impressive railway station stand as testament to the riches of the past. In the 17th century, it was home to Peter Paul Rubens - and you can admire his impressive artworks in his former residence and studio as well as in the Gothic Church of Our Lady. The cathedral has the highest church tower in Flanders and is a UNESCO World Heritage Site. Superlatives are also to be found in the Diamond Quarter, famous for the Antwerp Cut.

Day 4 Relaxation at sea

Day 5 St Malo/France, 08.00 - 17.00 hrs

Towering fortress walls that stand out impressively against the sky and a breathtaking coastal landscape: St Malo is a true jewel on the Emerald Coast of Brittany. The city centre, with its narrow streets and mighty fortress towers, is one of the most famous postcard motifs in France. Behind the fortified walls, which you can walk around, the historic town centre will reveal its interesting past. Off the beaten track, miles of sandy beaches, the picturesque promenade and street art in the harbour are special places to explore. Of course the town also offers some tempting culinary highlights, including Cancale oysters. St Malo is also the perfect starting point for visiting the famous monastery island of Mont St Michel*, which has been attracting pilgrims from all over the world for centuries.

Day 6 Brest/France, 12.00 - 19.00 hrs

Brest is a lively city steeped in history, yet with its sights firmly set on the future. Towering above the water is the imposing Chateau de Brest, whose origins date back over 1,700 years, but which has been altered many times over the centuries. Inside, the National Maritime Museum tells the story of the region's great seafaring history. Just a few steps away, the Pont

de Recouvrance, one of Europe's largest lift bridges, spans the Penfeld River and offers breathtaking views of the harbour and fortress. A stroll along the waterfront promenade takes you past old quays and traditional naval barges. In contrast, the Oceanopolis, Europe's largest aquarium and maritime research centre, brings the marine worlds of Brittany to life. The region also offers diverse culinary delights: fresh seafood and Breton specialities such as galettes and cider promise moments of pure indulgence.

Day 7 Relaxation at sea

Day 8 La Coruna/Spain, 08.00 - 23.30 hrs

Admire the rugged beauty of Galicia in La Coruna. The coastal city in the north-west of Spain boasts a cultural and culinary diversity that is typical of this autonomous community. The Torre de Hercules, the city's impressive landmark, tells of great history from afar - it is the only still active lighthouse from Roman times. In the old town, narrow lanes lead to picturesque squares such as the Plaza de Maria Pita, while the kilometre-long promenade along the extensive beaches invites you to take relaxing walks. La Coruna is also a popular starting point for excursions* to the pilgrimage site Santiago de Compostela, whose magnificent cathedral combines Romanesque, Renaissance and baroque styles.

Take your time to soak up the impressions - thanks to the long lay time.

Day 9 Relaxation at sea

Day 10 Lisbon/Portugal, 08.00 - 18.00 hrs

The Small Cruise Ship Collection

www.small-cruise-ships.com

01432 507 280 (within UK)

info@small-cruise-ships.com | small-cruise-ships.com



The Small Cruise Ship Collection

www.small-cruise-ships.com

small-cruise-ships.com

info@small-cruise-ships.com

A unique blend of magnificent palaces, historic monasteries and picturesque narrow streets greets visitors to the Portuguese capital. Lisbon has a magical charm of times gone by and surprises in store at every corner. The medieval Castelo de Sao Jorge stands guard over the city, while the Alfama district with its narrow winding streets and staircases offers an authentic insight into the old Lisbon. Don't miss a trip on the famous Tram 28, which winds its way up and down the hills. Cafes, shops and street sellers make the city centre a lively place to be. Lisbon is as colourful as its history, with its blue tiles, pink walls and yellow trams inviting you to while away some time.

Day 11 Portimao/Portugal, 08.00 - 18.00 hrs

The copper-red cliffs along the Algarve coast, which rise up almost vertically from the deep-blue sea, make Portimao a real highlight. The charming old town and the marina are perfect for relaxed walks, while the Praia da Rocha - an endless, golden shimmering beach - invites you to enjoy soaking up some rays of sun. Numerous other bays, dune islands and crystal-clear water are perfect for beach days at your own leisure, which will quickly make you forget the everyday.

Day 12 Cadiz/Spain, 08.00 - 18.00 hrs

The white buildings of Cadiz appear on the horizon, while the golden domes of the cathedral reflect the bright blue sky. The screeches of seagulls and the sound of the waves are carried on the wind. Cadiz, with its history dating back over 3,000 years, was once a lively trading centre. Today, the city retains its pride in its majestic palaces, the Miradores, which offer a breathtaking view over the endless sea. And as you approach the long sandy beach, you almost expect Halle Berry to emerge from the waves - as she did in the famous James Bond scene filmed here.

Day 13 Malaga/Spain, 8.00 - 18.00 hrs

Andalusia's second largest city exudes the scent of orange groves and the heat of the sun, which shines over the Bay of Malaga. The majestic Montes de Malaga mountain range is just a few miles north of the city, whereas the 130 m (426 ft) high Gibralfaro rises up in the city centre: from the walls of the Castillo de Gibralfaro, you can see the city in all its beauty - with the old town dominated by the elegant towers of the cathedral, one of the most beautiful in the Mediterranean. Beneath the castle are the romantic gardens of the Moorish Alcazaba fortress, a great place to while away some time. Wine lovers will appreciate the fertile soils of the Vega, which produce wines like Pedro Ximenez. Malaga is a feast for all the senses.

Day 14 Relaxation at sea

Day 15 Ibiza/Balearic Islands/Spain, 12.00 - 18.00 hrs

Ibiza, the third-largest Balearic island, has a special magic that can be felt in every season. It combines cultural history, lively traditions and impressive natural landscapes in a unique way. In Ibiza Town, past and present merge to create a vibrant mosaic: the mighty walls of Dalt Vila tell stories from Phoenician and Moorish times whilst stylish bars and colourful boutiques offer a vibrant vibe for visitors to enjoy today. The historic backdrop of the old town, which was declared a UNESCO World Heritage Site in 1999, rises proudly above the sea. While the city is filled with colourful hustle and bustle, nature boasts a sense of serenity: the Ses Salines Nature Park, also a UNESCO World Heritage Site, provides an ideal habitat for salt-loving plants and a diverse bird life.

Day 16 Palma de Mallorca/Mallorca/Balearic Islands/Spain, arrival 05.00 hrs

The Small Cruise Ship Collection
www.small-cruise-ships.com

01432 507 280 (within UK)

info@small-cruise-ships.com | small-cruise-ships.com



The Small Cruise
Ship Collection

www.small-cruise-ships.com

small-cruise-ships.com

info@small-cruise-ships.com

Please note:

* The shore activities are not included in the cruise price and are in the planning stage. Subject to change.

 The Small Cruise
Ship Collection
www.small-cruise-ships.com

01432 507 280 (within UK)

info@small-cruise-ships.com | small-cruise-ships.com

The Small Cruise Ship Collection

www.small-cruise-ships.com

small-cruise-ships.com

info@small-cruise-ships.com

YOUR SHIP: EUROPA

YOUR SHIP: Europa

VESSEL TYPE:

LENGTH:

PASSENGER CAPACITY:

BUILT/REFURBISHED:

Extensive space for a maximum of 400 guests A crew-to-guest ratio of almost one to one Outside suites only, most with a veranda Five restaurants for the ultimate in culinary indulgence - including THE GLOBE by three-star chef Kevin Fehling Top-class entertainment: experience international artists and experts live on board EUROPA Refresh: new fitness and wellness concepts for even more well-being MS EUROPA is an award-winning luxury cruise ship renowned for setting global standards in refined small-ship cruising. Accommodating a maximum of just 400 guests, the ship offers an intimate and highly personalised experience, supported by an almost one-to-one crew-to-guest ratio. Designed around the concept of casual luxury, EUROPA combines spacious surroundings, attentive service, and elegant all-suite accommodation, with all suites featuring ocean views and most offering private verandas. Onboard, guests can enjoy five exceptional restaurants, including fine dining concepts created in collaboration with acclaimed chefs, alongside world-class entertainment, wellness facilities, and thoughtfully curated enrichment experiences. The ship's smaller size allows access to unique itineraries and exclusive ports beyond the reach of larger vessels, while recent EUROPA Refresh

enhancements have introduced updated fitness and wellness concepts for an even more elevated onboard experience. Blending sophistication, comfort, and flexibility, MS EUROPA delivers a truly premium voyage to destinations



worldwide.

The Small Cruise Ship Collection
www.small-cruise-ships.com

01432 507 280 (within UK)

info@small-cruise-ships.com | small-cruise-ships.com



The Small Cruise
Ship Collection

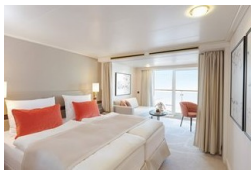
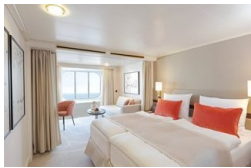
www.small-cruise-ships.com

small-cruise-ships.com

info@small-cruise-ships.com

INSIDE YOUR SHIP

Suite with panorama window Veranda Suite Cat. 4-5



Veranda Suite Cat. 6-7





The Small Cruise
Ship Collection

www.small-cruise-ships.com

small-cruise-ships.com

info@small-cruise-ships.com

PRICING

10-Oct-2027 to 22-Oct-2027

Suite with panorama window	£7125 GBP pp
Veranda Suite Cat. 4-5	£8305 GBP pp
Veranda Suite Cat. 6-7	£10199 GBP pp