



## GLACIER BAY ADVENTURE CRUISE WITH 2 DAYS IN GLACIER BAY - ALASKA EXPEDITION

Two days in Glacier Bay National Park offer an up-close look at glaciers, old-growth forests, and sea life. Hike remote coastlines and take in diverse birding at South Marble Island.



### ITINERARY

#### DAY 1 Juneau Embarkation

Arriving in Juneau, you will be transferred from the airport to our hospitality area. After a day of exploring Alaska's Capital City of Juneau, you'll board your small adventure ship. Your crew greets you with Champagne and smiles. Set sail for a week of scenic channels and secluded wilderness as you embark on a w. (D)

#### DAY 2 Icy Strait & Neka Bay

Kick start the morning with on-deck yoga stretches and a strong



## The Small Cruise Ship Collection

[www.small-cruise-ships.com](http://www.small-cruise-ships.com)

[small-cruise-ships.com](http://small-cruise-ships.com)

[info@small-cruise-ships.com](mailto:info@small-cruise-ships.com)

cup of coffee. Energized and snug in your kayak, glide around in remote bays off of Icy Strait through giant bullwhip kelp that can grow to over 100 feet long. Join the gang in a skiff to a rocky outcropping to watch sea lions play. Or, step into mud boots for a forest hike with your top-notch, naturalist guides who have plenty to share about everything Alaska--marine biology, plants, and even geology. Neka Bay is also known for terrific bushwhacks and enjoyable Kayak adventures. On board, soak it all in as you soak in the hot tub. (BLD)

### DAY 3 Glacier Bay National Park

Welcome to Glacier Bay National Park. Enjoy breakfast and then step shoreside in Bartlett Cove - the park headquarters- where park rangers, interpretive sites, a trail hike, and Xunaa Shuka Hit - the Huna Tribal House - await your discovery. Less than 1% of visitors to the park get the chance to step on land in the park - and this afternoon you will have the option to bushwhack, kayak, skiff, or walk the shores of Beartrack Cove - a stunning welcome to the expansive wilderness of Glacier Bay National Park. After dinner, get out on deck for sunset and bring your cameras, the snow-capped Fairweathers are the largest mountains in Southeast Alaska and are just begging to be photographed.

### DAY 4 Glacier Bay National Park Continued

It's 6:00 am. You were told this was going to be an early morning, and your alarm clock is the metallic sound of ice sliding past the hull of the ship. Grab a cup of coffee (let us grab it for you) and a warm jacket; directly off the bow is either Johns

Hopkins Glacier or Margerie Glacier, depending on the season and ice condition. The quiet of the morning is only interrupted by the thundering crash of the glacier as 10 story-buildings of ice crash into the sea in the soft light of sunrise. Grab a pastry and a big breakfast, today is going to be a banner day. The captain drops the anchor deftly at Lamplugh Glacier - the morning is your choice of how you want to experience the glacier. Kayaks, ridge hikes, and ice garden explorations are all at your fingertips. The afternoon is spent singularly focused on the wildlife of the park. Get your binoculars out and spot Mountain Goats at Gloomy Knob and Tufted Puffins at the birder's paradise of South Marble Island. This is our final day in the park - take it all in.

### DAY 5 Chichagof Island

Enjoy the top deck for a sunrise or morning stretch. Meander through glacier-carved fjords along the Chichagof coast. Then anchor. It's a prime time to lower the kayaks and skiffs. Camera in hand, set off on land and sea explorations. Closer inspection by skiff, moss-dripping trees run right down to the water. Any bears in there? With one of the world's largest populations of bears, it's possible. Go searching for giant trees and tidal pools. Hiking in the Tongass, it won't take long to find them. Your eagle-eyed guides lead the pack--and pull up the rear. (BLD)

### DAY 6 Keku Islands Park and Whales of Fredrick Sound

Hang out and enjoy the show. You may find yourself in 'whale soup' surrounded by feeding humpbacks swimming these abundant glacial waters. Based on wind and weather, your

The Small Cruise Ship Collection  
[www.small-cruise-ships.com](http://www.small-cruise-ships.com)

01432 507 280 (within UK)

[info@small-cruise-ships.com](mailto:info@small-cruise-ships.com) | [small-cruise-ships.com](http://small-cruise-ships.com)





expedition team has the lineup of adventures all mapped out. Cruise past Five Fingers Lighthouse, Alaska's oldest light station and The Brothers Islands, where sea lions nap on rocky nobs. Paddle into the deeps of Port Houghton or Windham Bay or head ashore for a hike. Somewhere nearby, carrot-billed black oystercatchers are saying hello. Tonight, toast another big day in Alaska. (BLD)

Itineraries are guidelines; variations in itinerary and the order of days may occur to maximize your experience.

#### DAY 7 Tracy Arm & Sawyer Glaciers

Take an early peek out your window. Fjord cliffs reach skyward. Floating ice. And deep u-shaped valleys. There's no abracadabra here. Mother Nature's magic is real. Cruise past harbor seals and their pups lounging on chunks of ice. In classic fjord form, Tracy Arm delivers with the cotton candy blue Twin Sawyers glacier of its furthest reaches. Tides permitting, your skiff driver knows the ropes and guides you along. It's a mashup of towering walls, temperamental currents, and the Coastal Mountains. So many waterfalls. Mountain goats show off fancy foot work on the cliffs, so keep your eyes open. Finish your week with Captain's dinner and post-dinner cocktails watching the week's "photo journal" by your crew. (BLD)

#### DAY 8 Juneau Disembarkation

Linger over breakfast this morning cruising into Juneau. Wish your crew and new friends goodbye. Then it's off to the airport or begin your UnCruise hotel stay or land tour. (B)

Please Note:



The Small Cruise  
Ship Collection

[www.small-cruise-ships.com](http://www.small-cruise-ships.com)



[small-cruise-ships.com](http://small-cruise-ships.com)

[info@small-cruise-ships.com](mailto:info@small-cruise-ships.com)

## YOUR SHIP: WILDERNESS DISCOVERER

**YOUR SHIP:**

**Wilderness Discoverer**

**VESSEL TYPE:**

**LENGTH:**

**PASSENGER CAPACITY:**

**BUILT/REFURBISHED:**

The 76-guest Wilderness Discoverer gets rave reviews from her guests. Expedition is top-of-mind with this vessel; and adventure and discovery lay at its heart. The interior complements the outside and public and private spaces are loaded with amenities. Enjoy a main lounge that evokes the feel of a National Park Lodge or neighborhood pub and relax on deck or keep watch for wildlife. Three accessible decks are fully equipped for comfort and action. The sun deck has a sauna and fitness equipment; viewing is over-the-top from the bow and under-the-stars from two hot tubs on the observation deck; and the EZ Dock launch platform on the main deck makes getting in the water a cinch. Onboard are kayaks; stand-up paddle boards; inflatable skiffs; hiking poles; yoga mats; hydrophone for listening below-surface; and a bow-mounted underwater camera pipes the action to the lounge and to your cabin TV. The four cabin categories aboard the Wilderness Discoverer are: Navigator; Trailblazer; Pathfinder; and Explorer. Depending on your cabin, singles, doubles or triples can be accommodated. Common to all Wilderness Discoverer cabins are: Memory foam mattresses; Flat-screen TV/DVD; and iPod docking station. All staterooms come with a view window (no portholes).



The Small Cruise  
Ship Collection

[www.small-cruise-ships.com](http://www.small-cruise-ships.com)

**01432 507 280** (within UK)

[info@small-cruise-ships.com](mailto:info@small-cruise-ships.com) | [small-cruise-ships.com](http://small-cruise-ships.com)



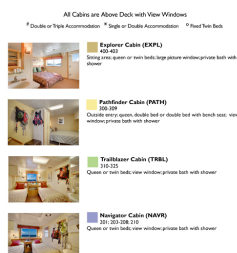
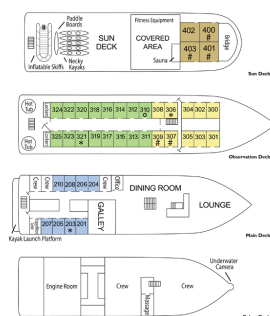
# The Small Cruise Ship Collection

www.small-cruise-ships.com

small-cruise-ships.com

info@small-cruise-ships.com

## INSIDE YOUR SHIP



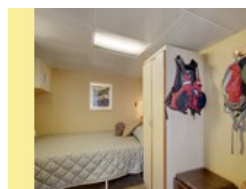
Admiral Cabin



Navigator Cabin



Pathfinder Cabin



Single





# The Small Cruise Ship Collection

[www.small-cruise-ships.com](http://www.small-cruise-ships.com)



[small-cruise-ships.com](http://small-cruise-ships.com)

[info@small-cruise-ships.com](mailto:info@small-cruise-ships.com)

## PRICING

### 07-Sep-2025 to 14-Sep-2025

Trailblazer Cabin	£4004 GBP pp
Admiral Cabin	£5313 GBP pp
Pathfinder Cabin	£4312 GBP pp
Navigator Cabin	£3619 GBP pp
Single	£6237 GBP pp

### 10-May-2026 to 17-May-2026

Admiral Cabin	£5929 GBP pp
Single	£7007 GBP pp
Trailblazer Cabin	£4466 GBP pp
Pathfinder Cabin	£4851 GBP pp
Navigator Cabin	£4004 GBP pp

### 19-Apr-2026 to 26-Apr-2026

Admiral Cabin	£4235 GBP pp
Single	£5159 GBP pp
Trailblazer Cabin	£3234 GBP pp
Pathfinder Cabin	£3542 GBP pp
Navigator Cabin	£2926 GBP pp

### 17-May-2026 to 24-May-2026

Trailblazer Cabin	£4466 GBP pp
Pathfinder Cabin	£4851 GBP pp
Admiral Cabin	£5929 GBP pp
Single	£7007 GBP pp
Navigator Cabin	£4004 GBP pp

### 26-Apr-2026 to 03-May-2026

Pathfinder Cabin	£3542 GBP pp
Navigator Cabin	£2926 GBP pp
Admiral Cabin	£4235 GBP pp
Single	£5159 GBP pp
Trailblazer Cabin	£3234 GBP pp

### 24-May-2026 to 31-May-2026

Admiral Cabin	£5929 GBP pp
Single	£7007 GBP pp
Trailblazer Cabin	£4466 GBP pp
Navigator Cabin	£4004 GBP pp
Pathfinder Cabin	£4851 GBP pp

### 03-May-2026 to 10-May-2026

Navigator Cabin	£3619 GBP pp
Admiral Cabin	£5313 GBP pp
Single	£6237 GBP pp
Pathfinder Cabin	£4312 GBP pp
Trailblazer Cabin	£4004 GBP pp



The Small Cruise Ship Collection

[www.small-cruise-ships.com](http://www.small-cruise-ships.com)

01432 507 280 (within UK)

[info@small-cruise-ships.com](mailto:info@small-cruise-ships.com) | [small-cruise-ships.com](http://small-cruise-ships.com)





# The Small Cruise Ship Collection

[www.small-cruise-ships.com](http://www.small-cruise-ships.com)



[small-cruise-ships.com](http://small-cruise-ships.com)

[info@small-cruise-ships.com](mailto:info@small-cruise-ships.com)

## PRICING

### 31-May-2026 to 07-Jun-2026

Admiral Cabin	£5929 GBP pp
Pathfinder Cabin	£4851 GBP pp
Trailblazer Cabin	£4466 GBP pp
Navigator Cabin	£4004 GBP pp
Single	£7007 GBP pp

### 12-Jul-2026 to 19-Jul-2026

Navigator Cabin	£4697 GBP pp
Single	£8316 GBP pp
Admiral Cabin	£7007 GBP pp
Pathfinder Cabin	£5775 GBP pp
Trailblazer Cabin	£5313 GBP pp

### 07-Jun-2026 to 14-Jun-2026

Pathfinder Cabin	£5775 GBP pp
Trailblazer Cabin	£5313 GBP pp
Navigator Cabin	£4697 GBP pp
Single	£8316 GBP pp
Admiral Cabin	£7007 GBP pp

### 19-Jul-2026 to 26-Jul-2026

Navigator Cabin	£4697 GBP pp
Admiral Cabin	£7007 GBP pp
Single	£8316 GBP pp
Pathfinder Cabin	£5775 GBP pp
Trailblazer Cabin	£5313 GBP pp

### 14-Jun-2026 to 21-Jun-2026

Admiral Cabin	£7007 GBP pp
Pathfinder Cabin	£5775 GBP pp
Navigator Cabin	£4697 GBP pp
Trailblazer Cabin	£5313 GBP pp
Single	£8316 GBP pp

### 26-Jul-2026 to 02-Aug-2026

Admiral Cabin	£7007 GBP pp
Navigator Cabin	£4697 GBP pp
Single	£8316 GBP pp
Pathfinder Cabin	£5775 GBP pp
Trailblazer Cabin	£5313 GBP pp

### 21-Jun-2026 to 28-Jun-2026

Pathfinder Cabin	£5775 GBP pp
Trailblazer Cabin	£5313 GBP pp
Navigator Cabin	£4697 GBP pp
Admiral Cabin	£7007 GBP pp
Single	£8316 GBP pp



The Small Cruise Ship Collection

[www.small-cruise-ships.com](http://www.small-cruise-ships.com)

01432 507 280 (within UK)

[info@small-cruise-ships.com](mailto:info@small-cruise-ships.com) | [small-cruise-ships.com](http://small-cruise-ships.com)



## The Small Cruise Ship Collection

[www.small-cruise-ships.com](http://www.small-cruise-ships.com)



[small-cruise-ships.com](http://small-cruise-ships.com)

[info@small-cruise-ships.com](mailto:info@small-cruise-ships.com)

## PRICING

### 16-Aug-2026 to 23-Aug-2026

Admiral Cabin	£7007 GBP pp
Trailblazer Cabin	£5313 GBP pp
Navigator Cabin	£4697 GBP pp
Single	£8316 GBP pp
Pathfinder Cabin	£5775 GBP pp

### 23-Aug-2026 to 30-Aug-2026

Pathfinder Cabin	£5775 GBP pp
Trailblazer Cabin	£5313 GBP pp
Admiral Cabin	£7007 GBP pp
Navigator Cabin	£4697 GBP pp
Single	£8316 GBP pp

### 30-Aug-2026 to 06-Sep-2026

Single	£7007 GBP pp
Pathfinder Cabin	£4851 GBP pp
Navigator Cabin	£4004 GBP pp
Trailblazer Cabin	£4466 GBP pp
Admiral Cabin	£5929 GBP pp

### 06-Sep-2026 to 13-Sep-2026

Single	£6237 GBP pp
Pathfinder Cabin	£4312 GBP pp
Navigator Cabin	£3619 GBP pp
Trailblazer Cabin	£4004 GBP pp
Admiral Cabin	£5313 GBP pp

### 13-Sep-2026 to 20-Sep-2026

Single	£5159 GBP pp
Pathfinder Cabin	£3542 GBP pp
Trailblazer Cabin	£3234 GBP pp
Navigator Cabin	£2926 GBP pp
Admiral Cabin	£4235 GBP pp

### 20-Sep-2026 to 27-Sep-2026

Navigator Cabin	£2926 GBP pp
Pathfinder Cabin	£3542 GBP pp
Trailblazer Cabin	£3234 GBP pp
Single	£5159 GBP pp
Admiral Cabin	£4235 GBP pp

### ADDITIONAL CHARGES:

Port charges. From 375 USD pp



The Small Cruise Ship Collection

[www.small-cruise-ships.com](http://www.small-cruise-ships.com)

01432 507 280 (within UK)

[info@small-cruise-ships.com](mailto:info@small-cruise-ships.com) | [small-cruise-ships.com](http://small-cruise-ships.com)