

The Small Cruise Ship Collection

www.small-cruise-ships.com



small-cruise-ships.com

info@small-cruise-ships.com

GASTRONOMIC JOURNEY THROUGH NORWEGIAN FJORDS LUXURY CRUISE

Carried by the sea breeze, step aboard for a gastronomic journey through Norway, where nature has created its most majestic masterpieces. In the presence of a top chef from one of Alain Ducasse's restaurants, you glide along legendary Viking coasts and colourful wooden villages. On your journey, admire the untamed power of the Geirangerfjord with its thundering waterfalls, and the majestic Lysefjord with the legendary Preikestolen -- the vertiginous rock that seems to hover above infinity. On land, Norway's history and majestic landscapes merge: the old town of Skudeneshavn, the Art Nouveau heritage of Ålesund, and the Hanseatic quarter of Bergen reflect the cultural richness of this Nordic kingdom. A journey of indulgence between thousand-year-old landscapes and fascinating culture, inviting you to discover the sublime soul of the Norwegian fjords with all your senses.



ITINERARY

Day 1 - Bergen

Located at the end of **Byfjord**, **Bergen** was the capital of Norway in the 12th and 13th Centuries and has preserved some very beautiful monuments from the time when it was home to royalty. Wandering through Bergen's streets means going back in time, in search of the hidden treasures that have been listed as **World Heritage Sites by UNESCO**. A veritable openair museum, Bergen is home to a thriving artistic community of painters, potters, jewellers. The Bergen cable car offers you a splendid panorama over the port and the surrounding fjords. Do not miss the visit to the old quarter with its narrow streets, a testimony of the power of the hanseatic

The Small Cruise Ship Collection

www.small-cruise-ships.com

01432 507 280 (within UK)

info@small-cruise-ships.com | small-cruise-ships.com



The Small Cruise Ship Collection

www.small-cruise-ships.com

small-cruise-ships.com

info@small-cruise-ships.com

League that controlled trade in Northern Europe at the end of the Middle Ages.

Day 2 - Alesund

Surrounded by a multitude of islands, fjords and majestic mountains, the town of **Ålesund** surprises many visitors. In fact, it is internationally renowned for its **Art nouveau architecture**. After the terrible fire of 1904 which reduced a large part of the town to ashes, Norwegian architects inspired by the Art nouveau style contributed to its reconstruction, with a very picturesque result. Not far from Ålesund, you will also discover **Giske**, the native island of Rollon, the great Viking leader who commanded the Norse expeditions to Normandy, or the beautiful island of Godoy and the village of Alnes, which offers a grandiose panorama over the Atlantic Ocean and the surrounding islands.

Day 3 - Geiranger

A must-see stopover in Norway, located halfway between Bergen and Trondheim, **Geiranger** offers the stunning beauty of a natural decor, listed as a UNESCO World Heritage site. You will be able to admire the splendour of the sheer cliffs, dark rocks and crystal-clear water that make the place famous, like the **majestic and mythical Seven Sisters waterfall**. The sides of the fjord offer many possibilities for hiking: the **Eagle's Road** takes you up to a steep stretch offering a gorgeous panoramic view. A visit to **Geiranger** village will immerse you in the rhythm of life in the little local community.

Day 3 - Hellesylt

Hellesylt is a small village located 20 kilometres from the Geiranger site. Here, you'll get a taste of a traditional Norwegian village. Colourful houses, wooden walkways, rustic stalls where

you can have a refreshment before heading off to discover more of the local colour. The surroundings are **simply magnificent** with cliffs, mountains and lakes with peaceful waters. The village is crossed by a river whose charming cascade tumbles into the fjord waters.

Day 4 - Nordfjordeid

Nordfjordeid is a small town lying south of Alesund, nestling in one of the arms of the **Nordfjorden** and its wild and magnificent shores. Between valleys with abundant vegetation and mountainous terrain, nature here offers a 360-degree view which was conducive to the early settlement of Viking communities, judging by the large number of tombs, among the country's largest and richest. You may get to deepen your knowledge of the Nordic culture and traditions at **Sagastad**, a surprising museum with interactive exhibitions and home, among other sights, to the **Myklebust**, one of the world's largest Viking ships, measuring 30 metres (98 feet) in length.

Day 5 - Skudeneshavn

A pretty little town of around 3,000 inhabitants, **Skudeneshavn** stretches out around a naturally sheltered port, **on the southern tip of the island of Karmøy**. It owes its growth to **herring fishing**, the heart of its economic activity until 1870. Today, Skudeneshavn will invite you to relax and to explore its rich maritime heritage. **Classed** as a protected national heritage site, its **old town**, built on a narrow strip of land between the Havnafjellet rock and the sea, is home to period residences and boat houses, a museum and various charming restaurants and cafes, testifying to its **cultural vitality**.

The Small Cruise Ship Collection
www.small-cruise-ships.com

01432 507 280 (within UK)

info@small-cruise-ships.com | small-cruise-ships.com



The Small Cruise Ship Collection

www.small-cruise-ships.com

small-cruise-ships.com

info@small-cruise-ships.com

Day 5 - Sailing in Lysefjorden

You will sail into the heart of one of Norway's most breathtaking fjords, its marvellous decor dominated by pristine nature, between vertiginous granite cliffs, crystal-clear waters and luxuriant vegetation. Very close to Stavanger, the quiet waters of **Lysefjorden** stretch out over around forty kilometres, beneath impressive rocks. Admire the world-famous site of **Preikestolen** (Pulpit Rock), a majestic cliff in the shape of a pulpit that rises to more than 600 metres above the waters. A bit further on, **Fløri**, from the top of its 4,444 steps, is the world's longest wooden stairway, whereas the Kjerag, with its mythical boulder wedged between two rock faces, provides an unusual and unforgettable spectacle.

Day 6 - Egersund

Like a painter's palette, the former industrial town of **Egersund** unveils its colours as if to better charm its passing visitors. Its small wooden houses, among the best conserved in Norway, certainly display **colourful façades** that distinguish them from the other municipalities of the southern Norwegian coast, which opted for white at a time when this was a sign of wealth. Admire the façades of Strandgaten, the **former main street** of the town, and wander the old district of Hauen, which is now full of cafes, galleries and boutiques. Also make a detour to the Heidningeholmen Church, whose foundations date back to the 17th century, and dive into Egersund's past.

Day 7 - Arendal

A port **city** located on Norway's southern coast, **Arendal** is considered as the municipality enjoying the best climate in the country. **This town in the Sorlandet** region has also long been renowned for its **iron ore mines**:

their operation in the 19th century produced a particularly resistant magnetite ore. The Raet National Park, the only protected area on the eastern coast of Norway, is not far away; here, you will fall in love with its raw nature, with silver and emerald reflections, dotted with immense coniferous forests and long pebble beaches.

Day 8 - Fredrikstad

Nestling on the shores of the Glomma estuary, **Fredrikstad** captivates with its rich historical heritage, picturesque canals and warm atmosphere. Founded in 1567, the **fortified old town** still has traces of its rich past. Fall under the spell of its cobbled narrow streets, edged with **traditional old wooden buildings**, boutiques and lively cafes, and also discover the extremely well-preserved ramparts, built almost 5 centuries ago. Nature enthusiasts will also appreciate the **magnificent hiking paths** along the Oslo fjord and surrounding islands, such as Hankø, with its idyllic beaches and lush plains.

Please note:

Itineraries are subject to change.

The Small Cruise Ship Collection

www.small-cruise-ships.com

01432 507 280 (within UK)

info@small-cruise-ships.com | small-cruise-ships.com



The Small Cruise Ship Collection

www.small-cruise-ships.com



small-cruise-ships.com

info@small-cruise-ships.com

YOUR SHIP: LE CHAMPLAIN

YOUR SHIP: Le Champlain

VESSEL TYPE:

LENGTH:

PASSENGER CAPACITY:

BUILT/REFURBISHED:

Featuring innovative and environmentally-friendly equipment, elegantly designed cabins, spacious suites with large windows, and lounge areas that open onto the outside, this new limited-capacity yacht boasting just 92 cabins and suites will offer you a truly unique cruising experience. As the first ship in a new series, Le Champlain will embody the unique atmosphere that is the cruise line's hallmark: a subtle blend of refinement, intimacy and comfort. Aboard this ship that flies the French flag, you will experience the incomparable pleasure of an intimate cruise, with the possibility of exploring an ever-increasing range of destinations in an ethnic-chic ambiance with luxury service. Experience a luxurious setting where the accent is on authenticity and passion for travel. RESTAURANTS As it is an essential part of French culture, gastronomy will naturally have pride of place aboard this new ship. Through its two restaurants, Le Champlain will invite you on a journey to elegance and epicureanism. In a relaxed atmosphere, a first dining area located on Deck 3 and able to seat 70 will serve grilled meats daily, along with a variety of salads and desserts. To the back of Deck 4, you will find a 260 m² panoramic restaurant which can accommodate all of our passengers in a single sitting. Designed

differently to that on our other ships, this dining area, which opens onto the outside, will have a buffet of salads, desserts and cheeses at your disposal. Our discreet and attentive crew will provide table service for hot meals. PUBLIC AREAS Like Le Boreal and its sisterships, Le Champlain has many common areas that are designed and equipped to meet all of your needs while preserving the intimacy of each passenger. A 140 m² reception area includes: A reception/concierge desk, An excursions desk, The ship's administrative services, The sales office, manned by our Guest Relations Officer, Our 50 m² boutique which sells clothing, jewellery, beauty products, postcards and various accessories, Toilets accessible to passengers with reduced mobility. A new hydraulic platform with adjustable height provides: Easier boarding than on any other cruise ship, Easier Zodiac embarkation and disembarkation for expeditions, Easier access to the sea for swimming and practising various water sports such as kayaking or paddle-boarding. A pool deck offering: A pool with a panoramic view, equipped with a counter-current swimming system, A pleasant solarium, An outdoor bar and lounge with armchairs and sofas. A 200 m² main lounge which can accommodate all of our passengers to share convivial moments and to host activities organised during the day or evening. Lastly, a theatre that seats 188, equipped with: The latest sound and lighting technology, A LED wall as the stage backdrop, for the projection of high-resolution images and videos. Please click the following links to read more about Ponant and the other Ponant



The Small Cruise
Ship Collection

www.small-cruise-ships.com

01432 507 280 (within UK)

info@small-cruise-ships.com | small-cruise-ships.com



The Small Cruise Ship Collection

www.small-cruise-ships.com



small-cruise-ships.com

info@small-cruise-ships.com



cruise ships.



The Small Cruise Ship Collection

www.small-cruise-ships.com

01432 507 280 (within UK)

info@small-cruise-ships.com | small-cruise-ships.com



The Small Cruise Ship Collection

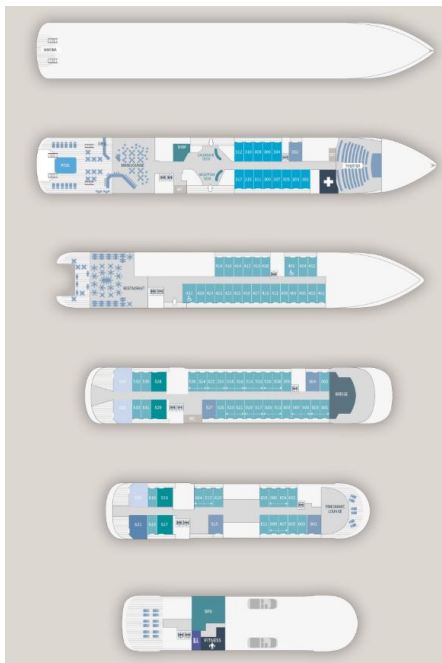
www.small-cruise-ships.com



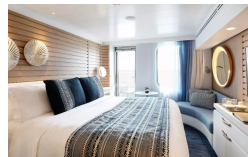
small-cruise-ships.com

info@small-cruise-ships.com

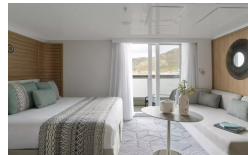
INSIDE YOUR SHIP



Deluxe Stateroom

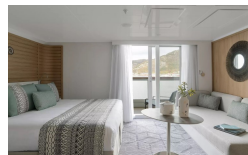


Deluxe Suite Deck 3



Deluxe Suite Deck 4

Deluxe Suite Deck 5



Deluxe Suite Deck 6

Grand Deluxe Suite

Owner's Suite

Prestige Stateroom Deck 4

Prestige Stateroom Deck 5

Prestige Stateroom Deck 6

Prestige Suite Deck 5

Prestige Suite Deck 6

Privilege Suite Deck 5

Privilege Suite Deck 6



The Small Cruise Ship Collection

www.small-cruise-ships.com

01432 507 280 (within UK)

info@small-cruise-ships.com | small-cruise-ships.com



The Small Cruise Ship Collection

www.small-cruise-ships.com



small-cruise-ships.com

info@small-cruise-ships.com

PRICING

05-Jul-2027 to 12-Jul-2027

Owner's Suite	£19835 GBP pp
Deluxe Stateroom	£5685 GBP pp
Deluxe Suite Deck 6	£9785 GBP pp
Deluxe Suite Deck 4	£9785 GBP pp
Privilege Suite Deck 5	£14625 GBP pp
Prestige Suite Deck 6	£13935 GBP pp
Deluxe Suite Deck 3	£9785 GBP pp
Privilege Suite Deck 6	£14625 GBP pp
Prestige Stateroom Deck 6	£7015 GBP pp
Prestige Suite Deck 5	£13235 GBP pp
Prestige Stateroom Deck 5	£6635 GBP pp
Prestige Stateroom Deck 4	£6325 GBP pp
Grand Deluxe Suite	£16075 GBP pp
Deluxe Suite Deck 5	£9785 GBP pp



The Small Cruise Ship Collection

www.small-cruise-ships.com

01432 507 280 (within UK)

info@small-cruise-ships.com | small-cruise-ships.com