



## GALAPAGOS BY CATAMARAN + MACHU PICCHU AND PERU'S LAND OF THE INCA

In one grand expedition, experience all the wildness of Galapagos with a maximum of 16 guests, and continue to Peru in a small group to experience the sublime archaeological wonder of Machu Picchu, the Sacred Valley, and Cusco on our signature land program. Throughout, you will explore with a top team of naturalists and historians who add layers of insight and interest.



### ITINERARY

DAY 1 Quito or Guayaquil, Ecuador

We meet you on arrival in Ecuador, either in Quito, Ecuador's capital city in the Andes, or in the coastal city of Guayaquil, for an included transfer to your convenient hotel overnight. Both cities are well-served by international carriers, and Galapagos flights start and end in Quito with a stop in Guayaquil. You may opt for a pre-voyage extension to Mashpi Reserve in the tropical Andes. Or arrive just one day early to join the See Quito Extension.

Arrival Time: Anytime.

Arrival City: Quito or Guayaquil, Ecuador



## The Small Cruise Ship Collection

[www.small-cruise-ships.com](http://www.small-cruise-ships.com)

[small-cruise-ships.com](http://small-cruise-ships.com)

[info@small-cruise-ships.com](mailto:info@small-cruise-ships.com)

DAY 2 Quito or Guayaquil / Galápagos Islands / Embark Ship

Fly to the Galapagos and embark National Geographic Delfina, a stable and stylish catamaran accommodating 16 guests, available as a private charter. Explore the islands and their remarkable wildlife.

Meals Included: Breakfast, Lunch, Dinner

DAYS 3-8 Exploring the Galápagos Islands

Below are a selection of islands we may visit during our expedition. Itineraries are subject to Galapagos National Park regulations.

**North Seymour:** Follow coastal trails past playful Galapagos sea lions on this wildlife-rich central island. Continue inland through a silvery forest of endemic palo santo trees, where frigatebirds nest, blue-footed boobies dance, and where we may also encounter prehistoric-looking land iguanas feeding on cactus.

**Bartolome:** Climb the steps to the summit of this 300-foot volcanic wonderland for stunning views. Explore, swim, and snorkel from the beach. Catch a glimpse of Galapagos penguins, one of the world's rarest.

**Santiago:** Explore tide pools and look for fur seals sheltered in quiet grottos of black basalt. Swim, snorkel, kayak, and paddleboard along Santiago's spectacular coast, and explore an enchanting coastal forest where Charles Darwin once walked.

**Isabela:** Cross the Equator at Volcan Ecuador, northernmost of Isabela's six great shield volcanoes. Keep an eye out for whales

and dolphins, sea turtles, and the elusive ocean sunfish. Over two days, land in the footsteps of Darwin and Melville, and look for wildlife along the wildly eroded volcanic shore.

**Fernandina:** One of the most active oceanic volcanoes in the world, Fernandina is the youngest and most pristine island in Galapagos -- and home to the strange flightless cormorant, Galapagos penguins, and the largest marine iguanas. Hikes ashore lead across impressive recent lava flows.

**Española:** See swallow-tailed gulls, Española mockingbirds, Nazca boobies and, seasonally, the world's only population of waved albatross at this bird paradise, also home to vividly colored marine iguanas. Watch sea lions on the white sand beach, and snorkel offshore at Gardner Bay.

**Floreana:** Follow a trail past a rose pink-tinted lagoon sometimes frequented by flamingos. Snorkel among sea lions and abundant fish, or cruise along Champion Islet by Zodiac. Visit the historic mail barrel at Post Office Bay.

**Santa Cruz:** Visit Puerto Ayora, the largest town and headquarters of both the Galapagos National Park and Charles Darwin Research Station. See the monument to Lonesome George, and tour the giant tortoise breeding corrals. Witness the giant tortoises roaming in the wild in the lush, green highlands.

**Santiago:** Explore tide pools and look for fur seals sheltered in quiet grottos of black basalt. Swim, snorkel, kayak, and paddleboard along Santiago's spectacular coast, and explore an enchanting coastal forest where Charles Darwin once walked.



The Small Cruise Ship Collection

[www.small-cruise-ships.com](http://www.small-cruise-ships.com)

01432 507 280 (within UK)

[info@small-cruise-ships.com](mailto:info@small-cruise-ships.com) | [small-cruise-ships.com](http://small-cruise-ships.com)



## The Small Cruise Ship Collection

[www.small-cruise-ships.com](http://www.small-cruise-ships.com)



[small-cruise-ships.com](http://small-cruise-ships.com)

[info@small-cruise-ships.com](mailto:info@small-cruise-ships.com)

**Genovesa:** Sail across the Equator to the remote northern realm of the Galapagos into this flooded caldera, home to over one million seabirds. Visit Prince Philip's Steps at the top of the island. Highlights along the trail are many, from Nazca, red- and blue-footed boobies and frigates, to gulls, owls, fur seals, hammerhead sharks, turtles, and manta rays.

**San Cristobal:** Walk along the powdery white sand at a gorgeous beach fronted by iconic Kicker Rock. Explore Baquerizo Moreno, where sea lions thrive in the middle of town.

Meals Included: Breakfast, Lunch, Dinner

### DAY 9 Galápagos Islands / Disembark Ship / Guayaquil / Lima, Peru

Depart Galapagos this morning and fly to Lima, Peru, via Guayaquil. Check into the Belmond Miraflores Park, set on a wide promenade overlooking the Pacific, where we spend two nights.

Meals Included: Breakfast, Lunch

### DAY 10 Lima

Explore World Heritage-designated colonial Lima this morning, where we stroll the Plaza Mayor and delight in a private welcome lunch with a special musical presentation at Casa Aliaga, one of the oldest houses in Lima. Then visit the extraordinary Larco Museum dedicated to pre-Columbian art. Return to our hotel with dinner on your own to sample local fare.

Meals Included: Breakfast, Lunch

### DAY 11 Lima / Cusco / Sacred Valley

Board a short scenic flight to Cusco this morning and continue to Moray--a visually stunning Inca site with dramatic agricultural terraces in the heart of the fabled and fertile Urubamba Valley. After lunch and an opportunity to experience a local market, check into our hotel. Sol y Luna, a Relais & Chateaux property, is where we stay in individual casitas set in verdant greens.

Meals Included: Breakfast, Lunch, Dinner

### DAY 12 Sacred Valley

Spend the day exploring the archaeological sites and culture of the Sacred Valley in the company of National Geographic expert Peter Frost (or a colleague), who has lived and worked in Peru for decades. He or a colleague joins us for a talk at our hotel and a visit to the massive Inca stone fortress of Ollantaytambo, set above a thriving Inca community. Lunch is at a working, family-owned hacienda, where we are treated to a show of Peruvian Paso horses, and National Geographic grantee Nilda Callañaupa, founder of El Centro de Textiles Tradicionales de Cusco, demonstrates Inca weaving traditions.

Meals Included: Breakfast, Lunch, Dinner

### DAY 13 Sacred Valley / Machu Picchu

Marvel at the dramatic scenery and life along the river en route this morning by train to Machu Picchu, the Inca royal retreat famously introduced to the world by Hiram Bingham in the April 1913 issue of National Geographic magazine. Check-in at the historic 31-room Belmond Sanctuary Lodge, adjacent to the



The Small Cruise Ship Collection

[www.small-cruise-ships.com](http://www.small-cruise-ships.com)

01432 507 280 (within UK)

[info@small-cruise-ships.com](mailto:info@small-cruise-ships.com) | [small-cruise-ships.com](http://small-cruise-ships.com)



World Heritage site, with the leisure to explore over two days in the company of our hand-picked tour director and local guides. Lunch and dinner at the hotel.

Meals Included: Breakfast, Lunch, Dinner

DAY 14 Machu Picchu / Cusco

Awaken this morning at Machu Picchu, where our local and veteran guides share their intimate understanding of this site, focusing on the history and far-reaching cultural influence. After lunch, return by train and bus to Cusco--the center of the Inca universe, a burgeoning cultural capital, and a UNESCO World Heritage site. Check-in at the Belmond Hotel Monasterio on Plaza Nazarenas in the heart of Cusco for two nights. Occupying a monastery founded in 1592, our hotel--like much of colonial Cusco--is built atop Inca stones.

Meals Included: Breakfast, Lunch, Dinner

DAY 15 Cusco

Explore the magnificently ornate 17th-century cathedral, sacred Inca Temple of the Sun, and other treasures of Cusco. Visit nearby Sacsayhuaman, where a series of imposing terrace walls, the most impressive yet, command views over the city. Relax, shop, or visit one of Cusco's many churches and museums this afternoon. Dinner is on your own tonight.

Meals Included: Breakfast, Lunch

DAY 16 Cusco / Lima

After breakfast and a final morning at leisure, say goodbye to the Land of the Inca and fly from Cusco back to Lima, connecting to flights home. Depending on your flight schedule, optional rooms at the Wyndham Costa del Sol Lima Airport Hotel are available, or spend the night and fly to Iquitos to join our Upper Amazon Expedition aboard Delfin II on Sunday.

Departure Time: Depart after 7:00 p.m. local time.  
Departure City: Lima, Peru

Meals Included: Breakfast

Please note:  
Itineraries are subject to change.



## The Small Cruise Ship Collection

[www.small-cruise-ships.com](http://www.small-cruise-ships.com)



[small-cruise-ships.com](http://small-cruise-ships.com)

[info@small-cruise-ships.com](mailto:info@small-cruise-ships.com)

## YOUR SHIP: NATIONAL GEOGRAPHIC DELFINA

**YOUR SHIP:** National Geographic Delfina

**VESSEL TYPE:**

**LENGTH:**

**PASSENGER CAPACITY:**

**BUILT/REFURBISHED:**

Lindblad Expeditions-National Geographic welcomes the newest and most intimate addition to the Galapagos fleet, National Geographic Delfina. Setting sail in early 2025, this sleek, contemporary vessel is a luxury catamaran designed for cruising the Galapagos Islands in style and stable comfort. The elegant, well-appointed ship, with a double hull, accommodates 16 guests in eight spacious, air-conditioned double staterooms with polished wood decor. Located on two decks, staterooms have either a private balcony (Category 5) or direct access to an expansive wood deck (Category 4). The open-air Observation Deck, which provides 360-degree views, has a shaded area for relaxation, a whirlpool hot tub, and lounge chairs to take in your surroundings. On the wrap-around Upper Deck, dine al fresco at the stern and enjoy spectacular island views from the bow as you watch for dolphins, whales, and other dazzling marine life. The dining room, bar, and cozy lounge with library are on the Main Deck, which is also the boarding area and marina. An authentic, immersive experience in the Galapagos National Geographic Delfina provides an authentic sense of place in these legendary islands informed by decades working closely with local communities and conservation groups. Contributing to

the fully immersive experience on board are the Ecuadorian officers and crew, as well as the locally sourced and sustainable farm-to-table and ocean-to-table culinary ingredients you'll enjoy at every meal. You will travel with a veteran Expedition Leader and National Geographic certified photo instructor, both licensed naturalists who will guide you on all your adventures in the Galapagos National Park and



Marine Reserve.



The Small Cruise Ship Collection

[www.small-cruise-ships.com](http://www.small-cruise-ships.com)

01432 507 280 (within UK)

[info@small-cruise-ships.com](mailto:info@small-cruise-ships.com) | [small-cruise-ships.com](http://small-cruise-ships.com)



# The Small Cruise Ship Collection

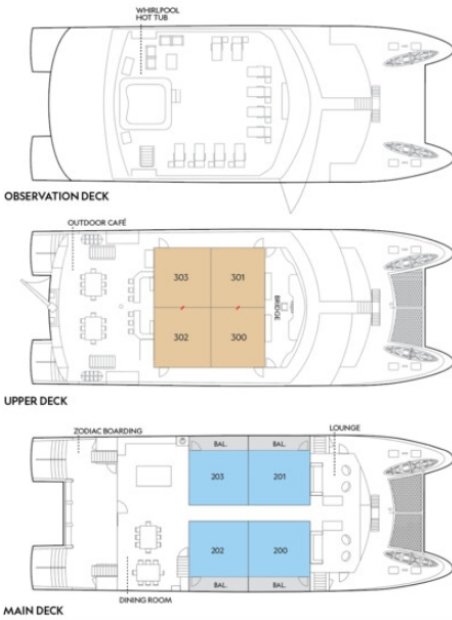
www.small-cruise-ships.com



small-cruise-ships.com

info@small-cruise-ships.com

## INSIDE YOUR SHIP



Category 01



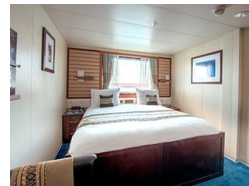
Category 02



Category 03



Category 04



Category 04. From

Category 05

Category 06

Category 07

Category AS

Category BS

Category CS

Category IS



# The Small Cruise Ship Collection

www.small-cruise-ships.com



small-cruise-ships.com

info@small-cruise-ships.com

## PRICING

### 24-Apr-2026 to 09-May-2026

Category 04. From	£15315 GBP pp
-------------------	---------------

### 01-May-2026 to 16-May-2026

Category AS	£15740 GBP pp
Category 03	£12998 GBP pp
Category CS	£17182 GBP pp
Category 04	£13912 GBP pp
Category 02	£12170 GBP pp
Category 01	£10727 GBP pp
Category BS	£16572 GBP pp

### 01-May-2026 to 16-May-2026

Category 05	£22869 GBP pp
Category 01	£14740 GBP pp
Category 07	£26267 GBP pp
Category 06	£24217 GBP pp
Category 04	£19904 GBP pp
Category 02	£17077 GBP pp

### 08-May-2026 to 23-May-2026

Category 02	£12852 GBP pp
Category CS	£18327 GBP pp
Category BS	£17660 GBP pp
Category AS	£16751 GBP pp
Category 04	£14755 GBP pp
Category 03	£13757 GBP pp
Category 01	£11277 GBP pp

### 15-May-2026 to 30-May-2026

Category BS	£16572 GBP pp
Category 04	£13912 GBP pp
Category 02	£12170 GBP pp
Category CS	£17182 GBP pp
Category 03	£12998 GBP pp
Category AS	£15740 GBP pp
Category 01	£10727 GBP pp

### 22-May-2026 to 06-Jun-2026

Category 04. From	£14883 GBP pp
-------------------	---------------

### 29-May-2026 to 13-Jun-2026

Category 04. From	£14883 GBP pp
-------------------	---------------

### 05-Jun-2026 to 20-Jun-2026

Category 04. From	£15205 GBP pp
-------------------	---------------



# The Small Cruise Ship Collection

www.small-cruise-ships.com



small-cruise-ships.com

info@small-cruise-ships.com

## PRICING

### 12-Jun-2026 to 27-Jun-2026

Category BS	£19205 GBP pp
Category 03	£14876 GBP pp
Category CS	£19947 GBP pp
Category AS	£18201 GBP pp
Category 04	£15979 GBP pp
Category 02	£13872 GBP pp
Category 01	£12117 GBP pp

### 12-Jun-2026 to 27-Jun-2026

Category 06	£24589 GBP pp
Category 02	£17373 GBP pp
Category 01	£15007 GBP pp
Category 07	£26655 GBP pp
Category 04	£20235 GBP pp
Category 05	£23221 GBP pp

### 19-Jun-2026 to 04-Jul-2026

Category 04. From	£15205 GBP pp
-------------------	---------------

### 26-Jun-2026 to 11-Jul-2026

Category 04. From	£15205 GBP pp
-------------------	---------------

### 03-Jul-2026 to 18-Jul-2026

Category 04. From	£15278 GBP pp
-------------------	---------------

### 10-Jul-2026 to 25-Jul-2026

Category 04. From	£15278 GBP pp
-------------------	---------------

### 17-Jul-2026 to 01-Aug-2026

Category 04. From	£15278 GBP pp
-------------------	---------------

### 24-Jul-2026 to 08-Aug-2026

Category 04. From	£15278 GBP pp
-------------------	---------------

### 31-Jul-2026 to 15-Aug-2026

Category 04. From	£15278 GBP pp
-------------------	---------------

### 31-Jul-2026 to 15-Aug-2026

Category CS	£20422 GBP pp
Category 02	£14185 GBP pp
Category 01	£12388 GBP pp
Category BS	£19664 GBP pp
Category AS	£18624 GBP pp
Category 04	£16350 GBP pp
Category 03	£15218 GBP pp

### 31-Jul-2026 to 15-Aug-2026

Category 06	£19371 GBP pp
Category 05	£18369 GBP pp
Category 04	£16177 GBP pp
Category 02	£14085 GBP pp
Category 07	£20888 GBP pp
Category 01	£12350 GBP pp

### 07-Aug-2026 to 22-Aug-2026

Category 04. From	£14906 GBP pp
-------------------	---------------



# The Small Cruise Ship Collection

[www.small-cruise-ships.com](http://www.small-cruise-ships.com)



[small-cruise-ships.com](http://small-cruise-ships.com)

[info@small-cruise-ships.com](mailto:info@small-cruise-ships.com)

**14-Aug-2026 to 29-Aug-2026**

**Category 04. From**

**£13950 GBP pp**

**21-Aug-2026 to 05-Sep-2026**

**Category 04. From**

**£13950 GBP pp**



The Small Cruise Ship Collection

[www.small-cruise-ships.com](http://www.small-cruise-ships.com)

**01432 507 280** (within UK)

[info@small-cruise-ships.com](mailto:info@small-cruise-ships.com) | [small-cruise-ships.com](http://small-cruise-ships.com)



# The Small Cruise Ship Collection

www.small-cruise-ships.com



small-cruise-ships.com

info@small-cruise-ships.com

## PRICING

### 28-Aug-2026 to 12-Sep-2026

Category 04. From £13950 GBP pp

### 04-Sep-2026 to 19-Sep-2026

Category 04. From £11900 GBP pp

### 11-Sep-2026 to 26-Sep-2026

Category 04. From £11900 GBP pp

### 18-Sep-2026 to 03-Oct-2026

Category 04. From £11900 GBP pp

### 25-Sep-2026 to 10-Oct-2026

Category 04. From £11900 GBP pp

### 02-Oct-2026 to 17-Oct-2026

Category 04. From £11900 GBP pp

### 09-Oct-2026 to 24-Oct-2026

Category 01 £13904 GBP pp

Category 06 £22175 GBP pp

Category 05 £20920 GBP pp

Category 04 £18282 GBP pp

Category 02 £15654 GBP pp

Category 07 £24363 GBP pp

### 09-Oct-2026 to 24-Oct-2026

Category CS £13937 GBP pp

Category BS £13489 GBP pp

Category 03 £10751 GBP pp

Category AS £12848 GBP pp

Category 04 £11490 GBP pp

Category 02 £10147 GBP pp

Category 01 £9244 GBP pp

### 16-Oct-2026 to 31-Oct-2026

Category 05 £15977 GBP pp

Category 04 £14368 GBP pp

### 23-Oct-2026 to 07-Nov-2026

Category 04. From £11900 GBP pp

### 30-Oct-2026 to 14-Nov-2026

Category 04. From £11900 GBP pp

### 06-Nov-2026 to 21-Nov-2026

Category 03 £13534 GBP pp

Category 02 £12649 GBP pp

Category 01 £11332 GBP pp

Category CS £18195 GBP pp

Category BS £17541 GBP pp

Category AS £16600 GBP pp

Category 04 £14619 GBP pp



www.small-cruise-ships.com

01432 507 280 (within UK)

info@small-cruise-ships.com | small-cruise-ships.com



# The Small Cruise Ship Collection

www.small-cruise-ships.com



small-cruise-ships.com

info@small-cruise-ships.com

## PRICING

### 13-Nov-2026 to 28-Nov-2026

Category 03	£12304 GBP pp
Category BS	£15748 GBP pp
Category 04	£13232 GBP pp
Category 01	£10405 GBP pp
Category CS	£16312 GBP pp
Category AS	£14941 GBP pp
Category 02	£11542 GBP pp

### 20-Nov-2026 to 05-Dec-2026

Category 04. From	£11900 GBP pp
-------------------	---------------

### 27-Nov-2026 to 12-Dec-2026

Category 07	£22255 GBP pp
Category 06	£20300 GBP pp
Category 05	£19181 GBP pp
Category 04	£16824 GBP pp
Category 02	£14478 GBP pp
Category 01	£12915 GBP pp

### 27-Nov-2026 to 12-Dec-2026

Category 04. From	£11900 GBP pp
-------------------	---------------

### 27-Nov-2026 to 12-Dec-2026

Category 04	£12040 GBP pp
Category CS	£14688 GBP pp
Category 02	£10588 GBP pp
Category AS	£13508 GBP pp
Category BS	£14202 GBP pp
Category 03	£11240 GBP pp
Category 01	£9610 GBP pp

### 04-Dec-2026 to 19-Dec-2026

Category 04. From	£11900 GBP pp
-------------------	---------------

### 11-Dec-2026 to 26-Dec-2026

Category 04. From	£12436 GBP pp
-------------------	---------------

### 18-Dec-2026 to 02-Jan-2027

Category 04. From	£17060 GBP pp
-------------------	---------------

### 25-Dec-2026 to 09-Jan-2027

Category 04. From	£16370 GBP pp
-------------------	---------------

### 01-Jan-2027 to 16-Jan-2027

Category 05	£20746 GBP pp
Category 04	£17869 GBP pp
Category 02	£15372 GBP pp
Category 01	£13297 GBP pp
Category 07	£22820 GBP pp
Category 06	£21945 GBP pp

### 01-Jan-2027 to 16-Jan-2027



www.small-cruise-ships.com

01432 507 280 (within UK)

info@small-cruise-ships.com | small-cruise-ships.com



# The Small Cruise Ship Collection

[www.small-cruise-ships.com](http://www.small-cruise-ships.com)



[small-cruise-ships.com](http://small-cruise-ships.com)

[info@small-cruise-ships.com](mailto:info@small-cruise-ships.com)

Category 04. From

£15284 GBP pp



The Small Cruise Ship Collection

[www.small-cruise-ships.com](http://www.small-cruise-ships.com)

**01432 507 280** (within UK)

[info@small-cruise-ships.com](mailto:info@small-cruise-ships.com) | [small-cruise-ships.com](http://small-cruise-ships.com)



# The Small Cruise Ship Collection

www.small-cruise-ships.com



small-cruise-ships.com

info@small-cruise-ships.com

## PRICING

### 01-Jan-2027 to 16-Jan-2027

Category 04	£14808 GBP pp
Category 02	£12854 GBP pp
Category BS	£17794 GBP pp
Category AS	£16858 GBP pp
Category CS	£18479 GBP pp
Category 03	£13785 GBP pp
Category 01	£11234 GBP pp

### 08-Jan-2027 to 23-Jan-2027

Category 04. From	£15284 GBP pp
-------------------	---------------

### 15-Jan-2027 to 30-Jan-2027

Category 04. From	£15284 GBP pp
-------------------	---------------

### 22-Jan-2027 to 06-Feb-2027

Category 04. From	£15284 GBP pp
-------------------	---------------

### 29-Jan-2027 to 13-Feb-2027

Category 04. From	£15284 GBP pp
-------------------	---------------

### 05-Feb-2027 to 20-Feb-2027

Category 04. From	£15514 GBP pp
-------------------	---------------

### 12-Feb-2027 to 27-Feb-2027

Category 04. From	£15514 GBP pp
-------------------	---------------

### 19-Feb-2027 to 06-Mar-2027

Category 04. From	£15514 GBP pp
-------------------	---------------

### 26-Feb-2027 to 13-Mar-2027

Category CS	£16958 GBP pp
Category 02	£12037 GBP pp
Category BS	£16365 GBP pp
Category AS	£15540 GBP pp
Category 03	£12850 GBP pp
Category 04	£13748 GBP pp
Category 01	£10619 GBP pp

### 26-Feb-2027 to 13-Mar-2027

Category 07	£22808 GBP pp
Category 06	£21935 GBP pp
Category 04	£18125 GBP pp
Category 05	£20739 GBP pp
Category 02	£15634 GBP pp
Category 01	£13564 GBP pp

### 26-Feb-2027 to 13-Mar-2027

Category 04. From	£15514 GBP pp
-------------------	---------------

### 05-Mar-2027 to 20-Mar-2027

Category 04. From	£15752 GBP pp
-------------------	---------------

### 12-Mar-2027 to 27-Mar-2027

Category 04. From	£15752 GBP pp
-------------------	---------------

### 19-Mar-2027 to 03-Apr-2027

Category 04. From	£15752 GBP pp
-------------------	---------------

### 26-Mar-2027 to 10-Apr-2027



01432 507 280 (within UK)

info@small-cruise-ships.com | small-cruise-ships.com



# The Small Cruise Ship Collection

[www.small-cruise-ships.com](http://www.small-cruise-ships.com)



[small-cruise-ships.com](http://small-cruise-ships.com)

[info@small-cruise-ships.com](mailto:info@small-cruise-ships.com)

<b>Category 04. From</b>	<b>£15752 GBP pp</b>
--------------------------	----------------------

**02-Apr-2027 to 17-Apr-2027**

<b>Category 05</b>	<b>£17134 GBP pp</b>
--------------------	----------------------

<b>Category 04</b>	<b>£15129 GBP pp</b>
--------------------	----------------------

**09-Apr-2027 to 24-Apr-2027**

<b>Category 05</b>	<b>£17134 GBP pp</b>
--------------------	----------------------

<b>Category 04</b>	<b>£15129 GBP pp</b>
--------------------	----------------------



# The Small Cruise Ship Collection

www.small-cruise-ships.com



small-cruise-ships.com

info@small-cruise-ships.com

## PRICING

### 16-Apr-2027 to 01-May-2027

Category 05	£17134 GBP pp
Category 04	£15129 GBP pp

### 23-Apr-2027 to 08-May-2027

Category 04	£15129 GBP pp
Category 05	£17134 GBP pp

### 30-Apr-2027 to 15-May-2027

Category 04	£15089 GBP pp
Category 02	£13120 GBP pp
Category CS	£18776 GBP pp
Category BS	£18084 GBP pp
Category AS	£17148 GBP pp
Category 03	£14055 GBP pp
Category 01	£11492 GBP pp

### 30-Apr-2027 to 15-May-2027

Category IS	£21583 GBP pp
Category SU	£16770 GBP pp

### 07-May-2027 to 22-May-2027

Category 05	£17134 GBP pp
Category 04	£15129 GBP pp

### 14-May-2027 to 29-May-2027

Category 04	£15129 GBP pp
Category 05	£17134 GBP pp

### 21-May-2027 to 05-Jun-2027

Category 05	£17134 GBP pp
Category 04	£15129 GBP pp

### 28-May-2027 to 12-Jun-2027

Category 05	£17134 GBP pp
Category 04	£15129 GBP pp

### 04-Jun-2027 to 19-Jun-2027

Category 04	£15129 GBP pp
Category 05	£17134 GBP pp

### 11-Jun-2027 to 26-Jun-2027

Category 05	£17134 GBP pp
Category 04	£15129 GBP pp

### 18-Jun-2027 to 03-Jul-2027

Category 05	£17134 GBP pp
Category 04	£15129 GBP pp

### 25-Jun-2027 to 10-Jul-2027

Category 04	£15129 GBP pp
Category 05	£17134 GBP pp

### 02-Jul-2027 to 17-Jul-2027

Category 04	£12763 GBP pp
Category 05	£14297 GBP pp

### 09-Jul-2027 to 24-Jul-2027



www.small-cruise-ships.com

01432 507 280 (within UK)

info@small-cruise-ships.com | small-cruise-ships.com



# The Small Cruise Ship Collection

[www.small-cruise-ships.com](http://www.small-cruise-ships.com)



[small-cruise-ships.com](http://small-cruise-ships.com)

[info@small-cruise-ships.com](mailto:info@small-cruise-ships.com)

Category 04	£12763 GBP pp
-------------	---------------

Category 05	£14289 GBP pp
-------------	---------------

16-Jul-2027 to 31-Jul-2027

Category 05	£14289 GBP pp
-------------	---------------

Category 04	£12763 GBP pp
-------------	---------------



The Small Cruise Ship Collection

[www.small-cruise-ships.com](http://www.small-cruise-ships.com)

01432 507 280 (within UK)

[info@small-cruise-ships.com](mailto:info@small-cruise-ships.com) | [small-cruise-ships.com](http://small-cruise-ships.com)



# The Small Cruise Ship Collection

www.small-cruise-ships.com



small-cruise-ships.com

info@small-cruise-ships.com

## PRICING

### 23-Jul-2027 to 07-Aug-2027

Category 04	£12763 GBP pp
Category 05	£14289 GBP pp

### 30-Jul-2027 to 14-Aug-2027

Category 05	£14289 GBP pp
Category 04	£12763 GBP pp

### 06-Aug-2027 to 21-Aug-2027

Category 05	£14289 GBP pp
Category 04	£12763 GBP pp

### 13-Aug-2027 to 28-Aug-2027

Category 04	£12763 GBP pp
Category 05	£14343 GBP pp

### 20-Aug-2027 to 04-Sep-2027

Category 05	£13999 GBP pp
Category 04	£12495 GBP pp

### 27-Aug-2027 to 11-Sep-2027

Category 04	£12495 GBP pp
Category 05	£13999 GBP pp

### 03-Sep-2027 to 18-Sep-2027

Category 05	£13686 GBP pp
Category 04	£12228 GBP pp

### 10-Sep-2027 to 25-Sep-2027

Category 04	£11961 GBP pp
Category 05	£13389 GBP pp

### 17-Sep-2027 to 02-Oct-2027

Category 05	£13389 GBP pp
Category 04	£11961 GBP pp

### 24-Sep-2027 to 09-Oct-2027

Category 05	£13389 GBP pp
Category 04	£11961 GBP pp

### 01-Oct-2027 to 16-Oct-2027

Category 04	£11694 GBP pp
Category 05	£13068 GBP pp

### 08-Oct-2027 to 23-Oct-2027

Category 05	£13068 GBP pp
Category 04	£11694 GBP pp

### 15-Oct-2027 to 30-Oct-2027

Category 05	£13068 GBP pp
Category 04	£11694 GBP pp

### 22-Oct-2027 to 06-Nov-2027

Category 04	£11694 GBP pp
Category 05	£13068 GBP pp

### 29-Oct-2027 to 13-Nov-2027

Category 05	£13068 GBP pp
Category 04	£11694 GBP pp



01432 507 280 (within UK)

info@small-cruise-ships.com | small-cruise-ships.com



# The Small Cruise Ship Collection

[www.small-cruise-ships.com](http://www.small-cruise-ships.com)



[small-cruise-ships.com](http://small-cruise-ships.com)

[info@small-cruise-ships.com](mailto:info@small-cruise-ships.com)

## 05-Nov-2027 to 20-Nov-2027

Category 04 £11694 GBP pp

Category 05 £13068 GBP pp

## 12-Nov-2027 to 27-Nov-2027

Category 05 £13068 GBP pp

Category 04 £11694 GBP pp

## 19-Nov-2027 to 04-Dec-2027

Category SU £15039 GBP pp

Category IS £19154 GBP pp



# The Small Cruise Ship Collection

www.small-cruise-ships.com



small-cruise-ships.com

info@small-cruise-ships.com

## PRICING

### 19-Nov-2027 to 04-Dec-2027

Category 02	£12781 GBP pp
Category 01	£11434 GBP pp
Category CS	£18415 GBP pp
Category BS	£17746 GBP pp
Category AS	£16793 GBP pp
Category 04	£14778 GBP pp
Category 03	£13679 GBP pp

### 26-Nov-2027 to 11-Dec-2027

Category 02	£11442 GBP pp
Category 01	£10320 GBP pp
Category CS	£16137 GBP pp
Category BS	£15579 GBP pp
Category 03	£12190 GBP pp
Category AS	£14785 GBP pp
Category 04	£13106 GBP pp

### 03-Dec-2027 to 18-Dec-2027

Category 05	£13068 GBP pp
Category 04	£11694 GBP pp

### 10-Dec-2027 to 25-Dec-2027

Category 05	£13900 GBP pp
Category 04	£12389 GBP pp

### 17-Dec-2027 to 01-Jan-2028

Category 04	£13679 GBP pp
-------------	---------------

Category 04	£11694 GBP pp
Category 05	£13068 GBP pp

### 24-Dec-2027 to 08-Jan-2028

Category 05	£14640 GBP pp
Category 04	£13030 GBP pp

### 31-Dec-2027 to 15-Jan-2028

Category 05	£14663 GBP pp
Category 04	£13030 GBP pp

### 07-Jan-2028 to 22-Jan-2028

Category 05	£13320 GBP pp
Category 04	£11694 GBP pp

### 14-Jan-2028 to 29-Jan-2028

Category 05	£13053 GBP pp
Category 04	£11694 GBP pp

### 21-Jan-2028 to 05-Feb-2028

Category 05	£13053 GBP pp
Category 04	£11694 GBP pp

### 28-Jan-2028 to 12-Feb-2028

Category 05	£13053 GBP pp
Category 04	£11694 GBP pp

### 04-Feb-2028 to 19-Feb-2028

Category 05	£13053 GBP pp
Category 04	£11694 GBP pp



www.small-cruise-ships.com

01432 507 280 (within UK)

info@small-cruise-ships.com | small-cruise-ships.com



# The Small Cruise Ship Collection

[www.small-cruise-ships.com](http://www.small-cruise-ships.com)



[small-cruise-ships.com](http://small-cruise-ships.com)

[info@small-cruise-ships.com](mailto:info@small-cruise-ships.com)

**11-Feb-2028 to 26-Feb-2028**

**Category 04**

**£11961 GBP pp**

**Category 05**

**£13343 GBP pp**



The Small Cruise  
Ship Collection

[www.small-cruise-ships.com](http://www.small-cruise-ships.com)

**01432 507 280** (within UK)

[info@small-cruise-ships.com](mailto:info@small-cruise-ships.com) | [small-cruise-ships.com](http://small-cruise-ships.com)



# The Small Cruise Ship Collection

[www.small-cruise-ships.com](http://www.small-cruise-ships.com)



[small-cruise-ships.com](http://small-cruise-ships.com)

[info@small-cruise-ships.com](mailto:info@small-cruise-ships.com)

## PRICING

### 18-Feb-2028 to 04-Mar-2028

Category CS	£16152 GBP pp
Category AS	£14847 GBP pp
Category 04	£13198 GBP pp
Category 03	£12373 GBP pp
Category 02	£11625 GBP pp
Category 01	£10320 GBP pp
Category BS	£15602 GBP pp

### 24-Mar-2028 to 08-Apr-2028

Category 04	£12228 GBP pp
Category 05	£13633 GBP pp

### 18-Feb-2028 to 04-Mar-2028

Category IS	£20755 GBP pp
Category SU	£16182 GBP pp

### 25-Feb-2028 to 11-Mar-2028

Category 05	£13343 GBP pp
Category 04	£11961 GBP pp

### 03-Mar-2028 to 18-Mar-2028

Category 05	£13343 GBP pp
Category 04	£11961 GBP pp

### 10-Mar-2028 to 25-Mar-2028

Category 05	£13633 GBP pp
Category 04	£12228 GBP pp

### 17-Mar-2028 to 01-Apr-2028

Category 04	£12228 GBP pp
Category 05	£13633 GBP pp



The Small Cruise Ship Collection

[www.small-cruise-ships.com](http://www.small-cruise-ships.com)

01432 507 280 (within UK)

[info@small-cruise-ships.com](mailto:info@small-cruise-ships.com) | [small-cruise-ships.com](http://small-cruise-ships.com)