



## GALAPAGOS WITH NATIONAL GEOGRAPHIC + PERU'S LAND OF THE INCA

Embark on a sweeping adventure that encapsulates all the wildness of Galapagos balanced with the cultural and historic experiences of Machu Picchu & Peru's Land of the Inca. You'll explore Galapagos in depth aboard the 96-guest National Geographic Endeavour II, a fully-equipped expedition ship with tools for exploration. Encounter abundant wildlife--snorkel with sea lions and hike the highlands among giant tortoises. Then journey to contemporary Lima and historic Cusco, a UNESCO World Heritage site. Overnight at Machu Picchu and enjoy the luxury of a second day with options like an early hike out to the iconic Sun Gate, the final checkpoint on the Inca Trail.



### ITINERARY

#### DAY 1: Guayaquil, Ecuador

Upon arrival in Guayaquil, transfer to the Hotel Oro Verde Guayaquil. Ask your Expedition Specialist about extra nights

#### DAY 2: Guayaquil / Galápagos / Embark Ship

This morning, fly to the Galapagos Islands and board National Geographic Endeavour II. After lunch, we begin our exploration of the islands and their remarkable wildlife. (B,L,D)

#### DAY 3-8: Exploring the Galápagos Islands

Listed below is a sample of islands we may visit during our expedition. All ship itineraries are subject to Galapagos National Park regulations. (B,L,D Daily) North Seymour: Follow coastal trails past playful Galapagos sea lions on this wildlife-rich central island. Continue inland through a silvery forest of endemic palo santo trees, where frigatebirds nest, blue-footed



## The Small Cruise Ship Collection

[www.small-cruise-ships.com](http://www.small-cruise-ships.com)

[small-cruise-ships.com](http://small-cruise-ships.com)

[info@small-cruise-ships.com](mailto:info@small-cruise-ships.com)

boobies dance, and where we may also encounter prehistoric-looking land iguanas feeding on cactus. Isabela: Cross the Equator at Volcan Ecuador, northernmost of Isabela's six great shield volcanoes. Keep an eye open for whales and dolphins, sea turtles and the elusive ocean sunfish. Over two days, land in the footsteps of Darwin and Melville, and look for wildlife along the wildly eroded volcanic shore. Fernandina: One of the most active oceanic volcanoes in the world, Fernandina is the youngest and most pristine island in Galapagos-- and home to the strange flightless cormorant, Galapagos penguins and the largest marine iguanas. Hikes ashore lead across impressive recent lava flows. Española: See swallow-tailed gulls, Española mockingbirds, Nazca boobies and, seasonally, the world's only population of waved albatross at this birdy paradise, also home to vividly colored marine iguanas. Watch sea lions on the wide sand beach, and snorkel offshore, at Gardner Bay. Floreana: Follow a trail past a rose pink-tinted lagoon frequented by flamingos. Snorkel among sea lions and abundant fish, or cruise along Champion Islet by Zodiac. Visit the famous barrel at Post Office Bay. Santa Cruz: Visit Puerto Ayora, the largest town and headquarters of both the Galapagos National Park and Charles Darwin Research Station. See the monument to Lonesome George, and tour the giant tortoise breeding corrals. See the giant tortoises roaming in the wild in the lush, green highlands. Bartolome: Climb the steps to the summit of this 300-foot volcanic wonderland for stunning views. Explore, swim and snorkel from the beach. You might even see Galapagos penguins, one of world's rarest. Santiago: Explore tide pools and look for fur seals sheltered in quiet grottos of black basalt. Swim, snorkel, kayak and paddleboard along Santiago's spectacular coast, and explore an enchanting coastal forest where Charles Darwin once walked. Genovesa: Sail across the

Equator to the remote northern realm of the Galapagos, surrounded by warmer tropical waters. San Cristobal: Search for red-footed boobies and the endemic mockingbird and lava lizard--found only on this easternmost island, and dig your toes into the powdery white sand at a gorgeous beach fronted by iconic Kicker Rock. Explore Baquerizo Moreno, where sea lions thrive in the middle of to

### DAY 9: Galápagos / Guayaquil / Lima, Peru

Depart Galapagos this morning and fly to Lima, Peru. Check-in at Belmond Miraflores Park, where we spend two nights (new for 2022). Set on a green promenade overlooking the Pacific in fashionable Miraflores, this much-loved hotel is the perfect base to explore. (B,L)

### DAY 10: Lima

Explore World Heritage-designated colonial Lima this morning, where we stroll the Plaza Mayor and delight in a private welcome lunch with a special musical presentation at Casa Aliaga, one of the oldest houses in Lima. Then visit the extraordinary Larco Museum dedicated to pre-Columbian art. Return to our hotel with dinner on your own to sample local fare. (B,L)

### DAY 11: Lima / Cusco / Sacred Valley

Board a short scenic flight to Cusco this morning, and continue to Moray--a visually stunning Inca site with dramatic agricultural terraces in the heart of the fabled and fertile Urubamba Valley. After lunch and an opportunity to experience a local market, check-in at Belmond Rio Sagrado, set in verdant gardens with views over the valley. (B,L,D)

### DAY 12: Sacred Valley



The Small Cruise Ship Collection

[www.small-cruise-ships.com](http://www.small-cruise-ships.com)

**01432 507 280** (within UK)

[info@small-cruise-ships.com](mailto:info@small-cruise-ships.com) | [small-cruise-ships.com](http://small-cruise-ships.com)





## The Small Cruise Ship Collection

[www.small-cruise-ships.com](http://www.small-cruise-ships.com)

[small-cruise-ships.com](http://small-cruise-ships.com)

[info@small-cruise-ships.com](mailto:info@small-cruise-ships.com)

Spend the day exploring the archaeological sites and culture of the Sacred Valley in the company of National Geographic expert Peter Frost (or a colleague), who has lived and worked in Peru for decades. He or a colleague joins us for a talk at our hotel and a visit to the massive Inca stone fortress of Ollantaytambo, set above a thriving Inca community. Lunch is at a working, family- owned hacienda, where we are treated to a show of Peruvian Paso horses, and National Geographic grantee Nilda Callañaupa, founder of El Centro de Textiles Tradicionales de Cusco, demonstrates Inca weaving traditions. (B,L,D)

#### [DAY 13: Sacred Valley / Machu Picchu](#)

Marvel at the dramatic scenery and life along the river en route this morning by train to Machu Picchu, the Inca royal retreat famously introduced to the world by Hiram Bingham in the April 1913 issue of National Geographic magazine. Check-in at the historic 31-room Belmond Sanctuary Lodge, adjacent to the World Heritage site, with the leisure to explore over two days in the company of our hand-picked tour director and local guides. Lunch and dinner at the hotel. (B,L,D)

#### [DAY 14: Machu Picchu / Cusco](#)

Awaken this morning at Machu Picchu, where options include an early hike to the Sun Gate, the ancient final checkpoint to Machu Picchu on the Inca Trail. After lunch, return by train and bus to Cusco--the center of the Inca universe and a burgeoning cultural capital. Check-in at the Belmond Hotel Monasterio on Plaza Nazarenas in the heart of Cusco for two nights. Occupying a monastery founded in 1592, our hotel--like much of colonial Cusco--is built atop Inca stones.(B,L,D)

#### [DAY 15: Cusco](#)

Explore the magnificently ornate 17th-century cathedral, sacred Inca Temple of the Sun, and other treasures of Cusco. Visit nearby Sacsayhuaman, where a series of imposing terrace walls, the most impressive yet, command views over the city. Relax, shop, or visit one of Cusco's many churches and museums this afternoon. Dinner is on your own tonight. (B,L)

#### [DAY 16: Cusco / Lima / Home](#)

After breakfast and a final morning at leisure, say goodbye to the Land of the Inca and fly from Cusco back to Lima. (B,L)

#### [Please Note:](#)

Itineraries are subject to change.



The Small Cruise Ship Collection

[www.small-cruise-ships.com](http://www.small-cruise-ships.com)

**01432 507 280** (within UK)

[info@small-cruise-ships.com](mailto:info@small-cruise-ships.com) | [small-cruise-ships.com](http://small-cruise-ships.com)



## The Small Cruise Ship Collection

[www.small-cruise-ships.com](http://www.small-cruise-ships.com)

[small-cruise-ships.com](http://small-cruise-ships.com)

[info@small-cruise-ships.com](mailto:info@small-cruise-ships.com)

## YOUR SHIP: NATIONAL GEOGRAPHIC ENDEAVOUR II

<b>YOUR SHIP:</b>	<b>National Geographic Endeavour II</b>
<b>VESSEL TYPE:</b>	<b>Expedition Ship</b>
<b>LENGTH:</b>	<b>73 metres</b>
<b>PASSENGER CAPACITY:</b>	<b>96 guests (in 53 outside cabins)</b>
<b>BUILT/REFURBISHED:</b>	<b>2005; Refurbished</b>



National Geographic Endeavour II is a purpose-built expedition ship that first sailed in 2005. After undergoing extensive renovation this year, she will redeploy to Galápagos. She is exceptionally nimble and maneuverable, with great viewing from all public spaces, large windows in cabins and suites, state-of-the-art tools for exploration, and a fast, seamless twin Zodiac loading platform. Public Areas : Ship is fully air-conditioned. Covered deck with chairs and tables; doctor's office; fitness centre; LEXspa; global gallery; library; lounge with full-service bar and facilities for viewing and presentations; and sun deck. Our Ecuadorian captain welcomes guests to the bridge in accordance with our 'open bridge' policy. Cabins : All cabins face outside with windows. Each has private facilities and climate controls. Expedition Equipment : Kayaks, glass-bottom Zodiac, snorkeling gear, underwater video camera, video microscope, wet suits, and Zodiac landing craft. Special Features : Guest internet access, laundry service, and wellness program. Ship's doctor and video chronicler are also on board.



The Small Cruise Ship Collection

[www.small-cruise-ships.com](http://www.small-cruise-ships.com)

**01432 507 280** (within UK)

[info@small-cruise-ships.com](mailto:info@small-cruise-ships.com) | [small-cruise-ships.com](http://small-cruise-ships.com)





The Small Cruise  
Ship Collection

[www.small-cruise-ships.com](http://www.small-cruise-ships.com)



[small-cruise-ships.com](http://small-cruise-ships.com)

[info@small-cruise-ships.com](mailto:info@small-cruise-ships.com)

## INSIDE YOUR SHIP

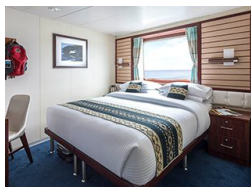
Cabin. From



Category 01. From



Category 1. From



The Small Cruise  
Ship Collection

[www.small-cruise-ships.com](http://www.small-cruise-ships.com)

**01432 507 280** (within UK)

[info@small-cruise-ships.com](mailto:info@small-cruise-ships.com) | [small-cruise-ships.com](http://small-cruise-ships.com)



The Small Cruise  
Ship Collection

[www.small-cruise-ships.com](http://www.small-cruise-ships.com)

[small-cruise-ships.com](http://small-cruise-ships.com)

[info@small-cruise-ships.com](mailto:info@small-cruise-ships.com)

## PRICING

**06-Mar-2026 to 21-Mar-2026**

Category 01. From £12062 GBP pp

**06-Mar-2026 to 21-Mar-2026**

Category 1. From £10402 GBP pp

**27-Mar-2026 to 11-Apr-2026**

Category 01. From £12816 GBP pp

**03-Apr-2026 to 18-Apr-2026**

Category 1. From £10347 GBP pp

**24-Apr-2026 to 09-May-2026**

Category 01. From £13200 GBP pp

**08-May-2026 to 23-May-2026**

Category 1. From £10721 GBP pp

**15-May-2026 to 30-May-2026**

Category 01. From £14458 GBP pp

**12-Jun-2026 to 27-Jun-2026**

Category 01. From £13326 GBP pp

**12-Jun-2026 to 27-Jun-2026**

Category 1. From £10879 GBP pp

**03-Jul-2026 to 18-Jul-2026**

Category 1. From £10647 GBP pp

**17-Jul-2026 to 01-Aug-2026**

Category 01. From £13091 GBP pp

**14-Aug-2026 to 29-Aug-2026**

Category 01. From £12282 GBP pp

**21-Aug-2026 to 05-Sep-2026**

Category 1. From £10470 GBP pp

**11-Sep-2026 to 26-Sep-2026**

Category 01. From £11340 GBP pp

**25-Sep-2026 to 10-Oct-2026**

Category 1. From £9036 GBP pp

**02-Oct-2026 to 17-Oct-2026**

Category 01. From £11042 GBP pp

**16-Oct-2026 to 31-Oct-2026**

Category 1. From £8788 GBP pp

**06-Nov-2026 to 21-Nov-2026**

Category 1. From £9791 GBP pp

**27-Nov-2026 to 12-Dec-2026**

Category 01. From £10926 GBP pp

**11-Dec-2026 to 26-Dec-2026**

Category 1. From £10011 GBP pp

**18-Dec-2026 to 02-Jan-2027**

Category 01. From £14486 GBP pp

**08-Jan-2027 to 23-Jan-2027**

Category 1. From £10242 GBP pp



The Small Cruise  
Ship Collection

[www.small-cruise-ships.com](http://www.small-cruise-ships.com)

**01432 507 280** (within UK)

[info@small-cruise-ships.com](mailto:info@small-cruise-ships.com) | [small-cruise-ships.com](http://small-cruise-ships.com)



# The Small Cruise Ship Collection

[www.small-cruise-ships.com](http://www.small-cruise-ships.com)



[small-cruise-ships.com](http://small-cruise-ships.com)

[info@small-cruise-ships.com](mailto:info@small-cruise-ships.com)

**08-Jan-2027 to 23-Jan-2027**

Category 01. From	£12170 GBP pp
-------------------	---------------

**09-Jul-2027 to 24-Jul-2027**

Category 1. From	£10536 GBP pp
------------------	---------------

**05-Feb-2027 to 20-Feb-2027**

Category 1. From	£10108 GBP pp
------------------	---------------

**09-Jul-2027 to 24-Jul-2027**

Cabin. From	£16738 GBP pp
-------------	---------------

**05-Feb-2027 to 20-Feb-2027**

Category 01. From	£12122 GBP pp
-------------------	---------------

**12-Mar-2027 to 27-Mar-2027**

Category 01. From	£12826 GBP pp
-------------------	---------------

**26-Mar-2027 to 10-Apr-2027**

Category 1. From	£10744 GBP pp
------------------	---------------

**26-Mar-2027 to 10-Apr-2027**

Category 01. From	£12362 GBP pp
-------------------	---------------

**16-Apr-2027 to 01-May-2027**

Cabin. From	£16126 GBP pp
-------------	---------------

**23-Apr-2027 to 08-May-2027**

Category 1. From	£10798 GBP pp
------------------	---------------

**07-May-2027 to 22-May-2027**

Cabin. From	£16126 GBP pp
-------------	---------------

**21-May-2027 to 05-Jun-2027**

Category 1. From	£10798 GBP pp
------------------	---------------

**04-Jun-2027 to 19-Jun-2027**

Cabin. From	£16432 GBP pp
-------------	---------------

**11-Jun-2027 to 26-Jun-2027**

Category 1. From	£10388 GBP pp
------------------	---------------



The Small Cruise Ship Collection

[www.small-cruise-ships.com](http://www.small-cruise-ships.com)

**01432 507 280** (within UK)

[info@small-cruise-ships.com](mailto:info@small-cruise-ships.com) | [small-cruise-ships.com](http://small-cruise-ships.com)





The Small Cruise  
Ship Collection

[www.small-cruise-ships.com](http://www.small-cruise-ships.com)

[small-cruise-ships.com](http://small-cruise-ships.com)

[info@small-cruise-ships.com](mailto:info@small-cruise-ships.com)

## PRICING

### 06-Aug-2027 to 21-Aug-2027

Cabin. From	£16432 GBP pp
-------------	---------------

### 13-Aug-2027 to 28-Aug-2027

Category 1. From	£10962 GBP pp
------------------	---------------

### 03-Sep-2027 to 18-Sep-2027

Cabin. From	£15820 GBP pp
-------------	---------------

### 24-Sep-2027 to 09-Oct-2027

Category 1. From	£10089 GBP pp
------------------	---------------

### 22-Oct-2027 to 06-Nov-2027

Category 1. From	£10089 GBP pp
------------------	---------------

### 29-Oct-2027 to 13-Nov-2027

Cabin. From	£15820 GBP pp
-------------	---------------

### 19-Nov-2027 to 04-Dec-2027

Category 1. From	£10089 GBP pp
------------------	---------------

### 19-Nov-2027 to 04-Dec-2027

Cabin. From	£15820 GBP pp
-------------	---------------

### 17-Dec-2027 to 01-Jan-2028

Cabin. From	£15820 GBP pp
-------------	---------------

### 24-Dec-2027 to 08-Jan-2028

Category 1. From	£10536 GBP pp
------------------	---------------

### 14-Jan-2028 to 29-Jan-2028

Category 1. From	£10388 GBP pp
------------------	---------------

### 28-Jan-2028 to 12-Feb-2028

Cabin. From	£16432 GBP pp
-------------	---------------

### 11-Feb-2028 to 26-Feb-2028

Category 1. From	£10089 GBP pp
------------------	---------------

### 18-Feb-2028 to 04-Mar-2028

Cabin. From	£15820 GBP pp
-------------	---------------

### 10-Mar-2028 to 25-Mar-2028

Category 1. From	£10089 GBP pp
------------------	---------------

### 24-Mar-2028 to 08-Apr-2028

Cabin. From	£15820 GBP pp
-------------	---------------



The Small Cruise  
Ship Collection

[www.small-cruise-ships.com](http://www.small-cruise-ships.com)

01432 507 280 (within UK)

[info@small-cruise-ships.com](mailto:info@small-cruise-ships.com) | [small-cruise-ships.com](http://small-cruise-ships.com)