



The Small Cruise
Ship Collection

www.small-cruise-ships.com

small-cruise-ships.com

info@small-cruise-ships.com

GALAPAGOS 5 DAY SEA STAR CRUISE B

Discover the natural and volcanic wonders of the Galapagos on this 5-day Sea Star cruise through Santa Cruz, Santiago, Genovesa, Bartholomew and San Cristobal Islands. Encounter iconic wildlife including land and marine iguanas, sea lions, penguins, boobies and reef sharks. From the lush highlands of Santa Cruz to the surreal lava landscapes of Santiago, this voyage offers a perfect balance of adventure, wildlife encounters, and breathtaking views.

5-day Galapagos Cruise Itinerary "B"



ITINERARY

Day 1. Santa Cruz Island

Arrive at Baltra Airport and transfer to the Sea Star yacht. After lunch and a welcome briefing, visit Dragon Hill, one of Santa Cruz's newest visitor sites. Walk along the beach and lagoon lookout to observe flamingos, pintail ducks and land iguanas among palo santo trees and cacti forests.

Day 2. Santa Cruz & Santiago Islands

Explore Black Turtle Cove, a mangrove-fringed inlet teeming with young marine life such as rays, reef sharks and sea turtles, accessible only by dinghy.

In the afternoon, visit Chinese Hat Islet on Santiago Island, known for its lava formations and rich marine life. Snorkel with penguins, rays and sea lions in the clear waters.



The Small Cruise
Ship Collection

www.small-cruise-ships.com

01432 507 280 (within UK)

info@small-cruise-ships.com | small-cruise-ships.com



The Small Cruise
Ship Collection

www.small-cruise-ships.com

small-cruise-ships.com

info@small-cruise-ships.com

Day 3. Genovesa Island

At El Barranco (Prince Philip's Steps), climb the cliff trail for magnificent views and encounters with red-footed boobies, short-eared owls and storm-petrels.

Continue to Darwin Bay, a coral-sand beach surrounded by mangroves. Walk the coastal trail to spot Nazca and red-footed boobies, swallow-tailed gulls and playful sea lions.

Day 4. Bartholomew & Santiago Islands

At Pinnacle Rock on Bartholomew Island, climb to the summit for one of the most spectacular panoramic views in the Galapagos. Snorkel in crystal waters alongside penguins and colourful reef fish.

Later, visit Sullivan Bay on Santiago Island to walk across the striking lava field shaped by past eruptions, dotted with small volcanic cones.

Day 5. Santa Cruz Island

Explore the lush Highlands of Santa Cruz, a contrast to the dry coastal zones. Walk among Scalesia forests, visit lava tunnels and see giant tortoises in their natural habitat.

After lunch, transfer to Baltra Airport for your flight back to the mainland.

Please note:

Itineraries are subject to change.



The Small Cruise
Ship Collection

www.small-cruise-ships.com

01432 507 280 (within UK)

info@small-cruise-ships.com | small-cruise-ships.com



The Small Cruise
Ship Collection

www.small-cruise-ships.com



small-cruise-ships.com

info@small-cruise-ships.com

YOUR SHIP: GALAPAGOS SEA STAR

YOUR SHIP: Galapagos Sea Star

VESSEL TYPE:

LENGTH:

PASSENGER CAPACITY:

BUILT/REFURBISHED:

Galapagos Sea Star The Galapagos Sea Star has a maximum capacity of 16 passengers, featuring seven spacious Galapagos Suites (approx. 25,2 m) and one Sea Star Suite (approx. 35,2 m) equipped with panoramic windows to enjoy the wonderful landscapes of the islands. All suites have a private bathroom, hot/cold water and air conditioning (with independent controls). Twin beds (or one faux queen bed) and connected suites are available for families. Local and International dishes – especially designed by our chef – are served in the cozy atmosphere of our dining room. Our yacht offers a large solarium with shaded and uncovered areas, two Jacuzzis and comfortable sun loungers. Social areas include a Saloon, mini-library and video library as well as a play zone for kids (during family departures). Snorkeling equipment and kayaks are available too without any extra charge. Galapagos Sea Star complies with local and international safety regulations. In addition, we implement sustainable practices throughout our journey to protect the fragile environment of the Galapagos archipelago. All guests will enjoy the well-furnished areas offering comfort and privacy. Galapagos Seaman has a maximum capacity of 16 passengers allowing both intimacy and camaraderie at the same time. There

are several resting areas for those who are looking for a quiet place to relax during their Galapagos trip with family and friends in the lazy mid-afternoon sun, or likewise after a busy day of swimming, snorkeling, kayaking, or walking on one of the Galapagos Islands. To check out the gorgeous ocean views with fellow shipmates, guests can spend some time on the spacious sundecks. Whether you feel like getting a little sun or want the best place to enjoy the gorgeous sunsets over the Galapagos Islands, the sundecks are the best place to be. For the adults who might want to relax and kick back, there is a great bar



and lounge.

The Small Cruise
Ship Collection

www.small-cruise-ships.com

01432 507 280 (within UK)

info@small-cruise-ships.com | small-cruise-ships.com



The Small Cruise Ship Collection

www.small-cruise-ships.com



small-cruise-ships.com

info@small-cruise-ships.com

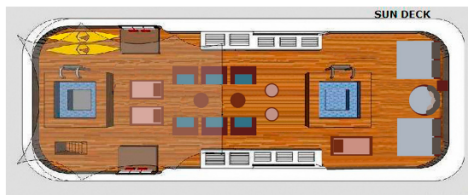
INSIDE YOUR SHIP



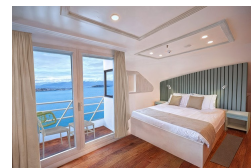
Upper Deck



Sun deck



Cabin



The Small Cruise Ship Collection

www.small-cruise-ships.com

01432 507 280 (within UK)

info@small-cruise-ships.com | small-cruise-ships.com



The Small Cruise Ship Collection

www.small-cruise-ships.com

small-cruise-ships.com

info@small-cruise-ships.com

PRICING

01-Mar-2026 to 06-Mar-2026

Cabin	£3715 GBP pp
-------	--------------

15-Mar-2026 to 20-Mar-2026

Cabin	£3509 GBP pp
-------	--------------

29-Mar-2026 to 03-Apr-2026

Cabin	£3715 GBP pp
-------	--------------

12-Apr-2026 to 17-Apr-2026

Cabin	£3509 GBP pp
-------	--------------

26-Apr-2026 to 01-May-2026

Cabin	£3509 GBP pp
-------	--------------

10-May-2026 to 15-May-2026

Cabin	£3509 GBP pp
-------	--------------

24-May-2026 to 29-May-2026

Cabin	£3509 GBP pp
-------	--------------

07-Jun-2026 to 12-Jun-2026

Cabin	£3509 GBP pp
-------	--------------

21-Jun-2026 to 26-Jun-2026

Cabin	£3509 GBP pp
-------	--------------

05-Jul-2026 to 10-Jul-2026

Cabin	£3509 GBP pp
-------	--------------

19-Jul-2026 to 24-Jul-2026

Cabin	£3509 GBP pp
-------	--------------

02-Aug-2026 to 07-Aug-2026

Cabin	£3509 GBP pp
-------	--------------

16-Aug-2026 to 21-Aug-2026

Cabin	£3509 GBP pp
-------	--------------

30-Aug-2026 to 04-Sep-2026

Cabin	£3509 GBP pp
-------	--------------

13-Sep-2026 to 18-Sep-2026

Cabin	£3509 GBP pp
-------	--------------

27-Sep-2026 to 02-Oct-2026

Cabin	£3509 GBP pp
-------	--------------

11-Oct-2026 to 16-Oct-2026

Cabin	£3509 GBP pp
-------	--------------

25-Oct-2026 to 30-Oct-2026

Cabin	£3509 GBP pp
-------	--------------

08-Nov-2026 to 13-Nov-2026

Cabin	£3509 GBP pp
-------	--------------

22-Nov-2026 to 27-Nov-2026

Cabin	£3509 GBP pp
-------	--------------

06-Dec-2026 to 11-Dec-2026

Cabin	£3509 GBP pp
-------	--------------

20-Dec-2026 to 25-Dec-2026

Cabin	£3509 GBP pp
-------	--------------



The Small Cruise Ship Collection

www.small-cruise-ships.com

01432 507 280 (within UK)

info@small-cruise-ships.com | small-cruise-ships.com